

ON BOARD LOCATION
REFERENCE

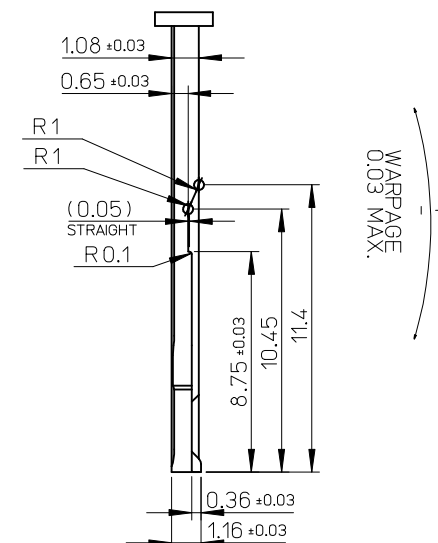
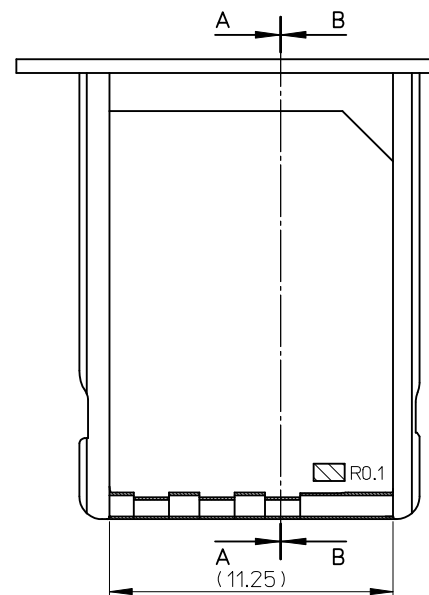
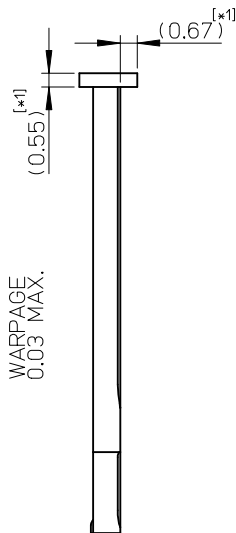
(V_{SS} : GROUND)

TOLERANCE : ± 0.05

4.

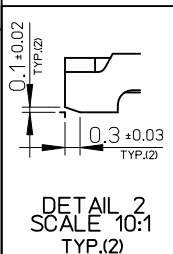
7. GND RECOMMENDED PATTERN.


SEE SHEET 1 OF 4 EC NO: J2015-0745 DRW:NMISOGAYA CHKD:SAKIYAMA APPR:NUKITA 2014/12/03 2014/12/03 2014/12/03	DESCRIPTION		GENERAL TOLERANCES (UNLESS SPECIFIED)		DIMENSION STYLE MM ONLY		SCALE 5:1	DESIGN UNITS METRIC	THIRD ANGLE PROJECTION		
	<div><div>10 UNDER</div><div>10 OVER 30 UNDER</div><div>30 OVER</div><div>ANGULAR ±1 °</div></div>		±0.2		DRAWN BY DATE YNAITO 2013/07/06		TITLE MICRO SIM CONN. BAR-PUSH TYPE WITH TRAY ASSY molex				
			±0.25		CHECKED BY DATE SAKIYAMA 2013/07/06						
			±0.3		APPROVED BY DATE NUKITA 2013/07/29						
			DRAFT WHERE APPLICABLE MUST REMAIN WITHIN DIMENSIONS		MATERIAL NO.		DOCUMENT NO.		SHEET NO.		
REV					SEE SHEET 1 OF 4		SD-504536-001		2 OF 4		
				A3		THIS DRAWING CONTAINS INFORMATION THAT IS PROPRIETARY TO MOLEX INCORPORATED AND SHOULD NOT BE USED WITHOUT WRITTEN PERMISSION					



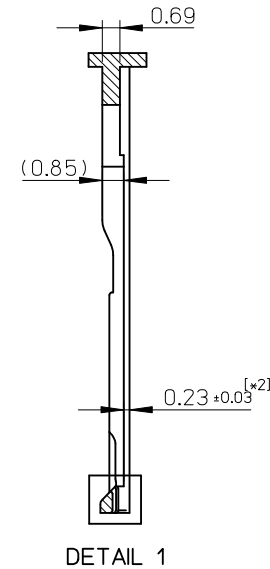
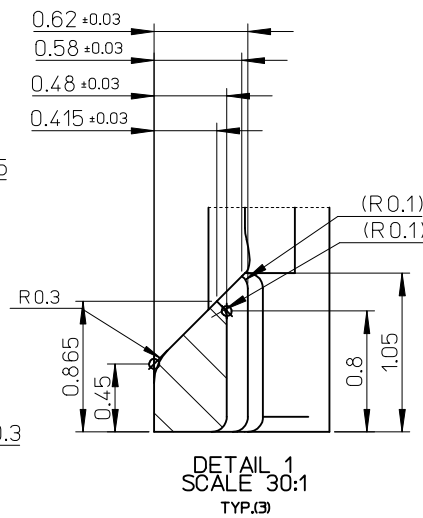
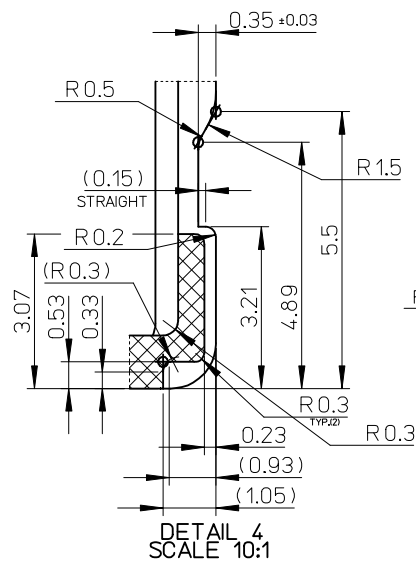
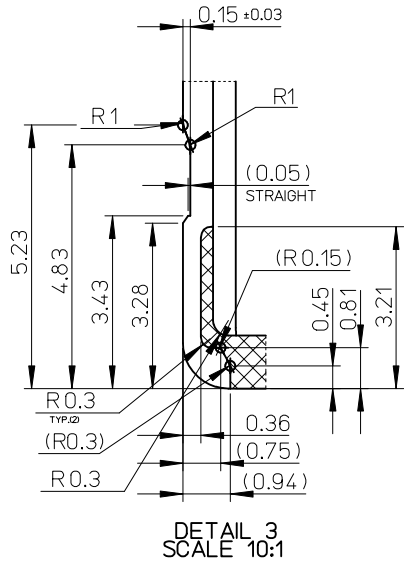
APPLICABLE MIM TRAY
(REFERENCE ONLY)
TOLERANCE : ± 0.05
COPRANALITY 0.05MAX
SURFACE ROUGHNESS : $R_a = 1\mu m$ MAX.

[*1]CUSTOMER CAN DECIDE THIS DIMENSION.
[*2]INSULATION PLATING IS CONTAINED

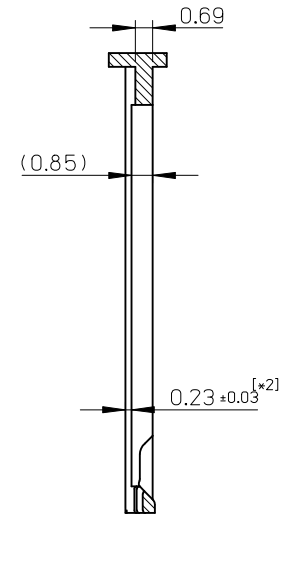


SEE SHEET 1 OF 4 EC NO.: J2015-0745 DRWNGM1506AYA CHKD:SAKIYAMA APPR:NUKITA 2014/12/03 2014/12/03 2014/12/03	DESCRIPTION	GENERAL TOLERANCES (UNLESS SPECIFIED)		DIMENSION STYLE MM ONLY		SCALE 5:1	DESIGN UNITS METRIC	 THIRD ANGLE PROJECTION	
		10 UNDER ±0.2	10 OVER 30 UNDER ±0.25	DRAWN BY YNAITO	DATE 2013/07/06	TITLE MICRO SIM CONN. BAR-PUSH TYPE WITH TRAY ASSY			
		30 OVER ±0.3	ANGULAR ±1 °	CHECKED BY SAKIYAMA	DATE 2013/07/06				
		DRAFT WHERE APPLICABLE MUST REMAIN WITHIN DIMENSIONS		APPROVED BY NUKITA	DATE 2013/07/29	molex			
				MATERIAL NO. SEE SHEET 1 OF 4					
REV			SIZE A3		THIS DRAWING CONTAINS INFORMATION THAT IS PROPRIETARY TO MOLEX INCORPORATED AND SHOULD NOT BE USED WITHOUT WRITTEN PERMISSION				

CONFIDENTIAL




SECTION A-A



SECTION B-B

CHAMFER AREA

Molex shall not be responsible for any infringement to the extent such infringement is the result of (a) use of the Product(s) in combination with any other products not provided by Molex if the infringement would not have occurred but for such combination, (b) any alteration of modification of the Product(s) not undertaken or authorized by Molex if the infringement would not have occurred but for such alteration or modification, (c) Molex's compliance with Buyer's specifications if the infringement would not have occurred but for such compliance, or (d) Buyer's failure to comply with Molex's instructions regarded as necessary to render the Product(s) non-infringing if the infringement would not have occurred if Buyer would have complied with Molex's instructions.

SEE SHEET 1 OF 4 EC NO: J2015-0745 DRAWN:MISO GAYA 2014/12/03 CHKD:SAKIYAMA 2014/12/03 APPR:NUKITA 2014/12/03	DESCRIPTION	GENERAL TOLERANCES (UNLESS SPECIFIED)		DIMENSION STYLE MM ONLY		SCALE 5:1	DESIGN UNITS METRIC	 THIRD ANGLE PROJECTION	
		10 UNDER	±0.2	DRAWN BY YNAITO	DATE 2013/07/06	TITLE MICRO SIM CONN. BAR-PUSH TYPE WITH TRAY ASSY molex			
		10 OVER 30 UNDER	±0.25	CHECKED BY SAKIYAMA	DATE 2013/07/06				
		30 OVER	±0.3	APPROVED BY NUKITA	DATE 2013/07/29				
		ANGULAR ±1°		MATERIAL NO.					DOCUMENT NO.
	DRAFT WHERE APPLICABLE MUST REMAIN WITHIN DIMENSIONS		SEE SHEET 1 OF 4		SD-504536-001				
D	REV			SIZE A3	THIS DRAWING CONTAINS INFORMATION THAT IS PROPRIETARY TO MOLEX INCORPORATED AND SHOULD NOT BE USED WITHOUT WRITTEN PERMISSION				

10

9

8

7

6

5

4

3

2

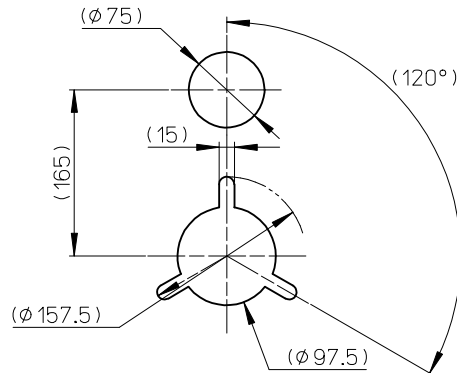
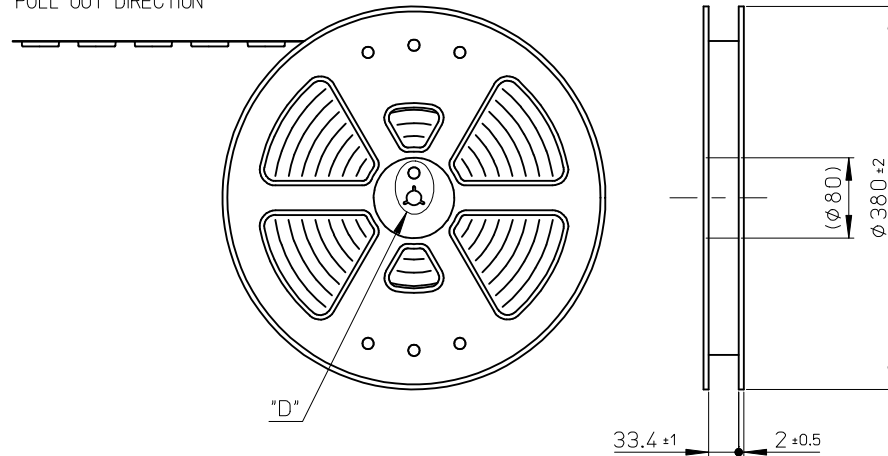
1

NOTES

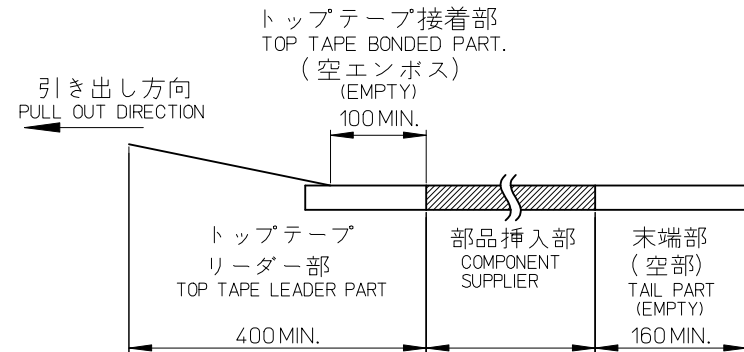
CONFIDENTIAL

- 製品詳細寸法については、SD 図面を参照下さい。
RE DETAILED DIMENSION, SEE SALES DRAWING.
- 梱包数量 : 1400 個/リール
NUMBER OF CONNECTORS : 1400 PCS/REEL.
- リードテープ長さ LEAD TAPE LENGTH.

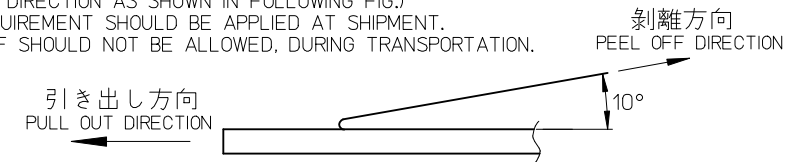
引き出し方向
PULL OUT DIRECTION



DETAIL "D"



- トップテープの剥離強度 : JIS C0806-3に準拠(剥離方向は下図参照)
尚、本規格値は出荷時に適用。(但し、輸送時に剥離が発生しないこと。)
PEELING OFF FORCE OF TOP TAPE : BASED UPON JIS C0806-3
(PEELING DIRECTION AS SHOWN IN FOLLOWING FIG.)
THIS REQUIREMENT SHOULD BE APPLIED AT SHIPMENT.
PEEL OFF SHOULD NOT BE ALLOWED, DURING TRANSPORTATION.



5. 材料 MATERIAL

キャリアテープ (CARRIER TAPE) : ポリスチレン (POLYSTYRENE)
トップテープ (TOP TAPE) : PET, PE, PEF
リール (REEL) : ポリスチレン (PS) <リサイクル材含む>
POLYSTYRENE (PS) <RECYCLE MATERIAL CONTAINED>

504536-0691		6
EMBOSSED PACKAGE		極数
オーダー番号 ORDER NO.		CIRCUITS
CONNECTOR SERIES No. 504536-****		
SCALE 1:1	DESIGN UNITS METRIC	THIRD ANGLE PROJECTION
TITLE MICRO SIM CONN. BAR-PUSH TYPE WITH TRAY EMBOSSED TAPE PACKAGE		
molex		
DOCUMENT NO. SD-504536-002		SHEET NO. 1 OF 2
THIS DRAWING CONTAINS INFORMATION THAT IS PROPRIETARY TO MOLEX INCORPORATED AND SHOULD NOT BE USED WITHOUT WRITTEN PERMISSION		

GENERAL TOLERANCES (UNLESS SPECIFIED)		DIMENSION STYLE MM ONLY	
10 UNDER	±0.2	DRAWN BY YNAITO	DATE 2013/11/07
10 OVER 30 UNDER	±0.25	CHECKED BY TKUSUHARA01	DATE 2013/11/07
30 OVER	±0.3	APPROVED BY NUKITA	DATE 2013/11/14
ANGULAR ±1 °		MATERIAL NO. SEE CHART	
DRAFT WHERE APPLICABLE MUST REMAIN WITHIN DIMENSIONS		SIZE A3	

9

8

7

6

5

4

3

2



tb_frame_A3_J_AM_S
Rev G 2012/01/25