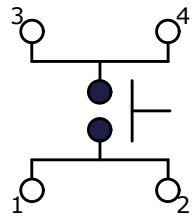
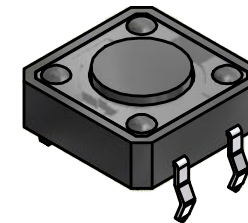
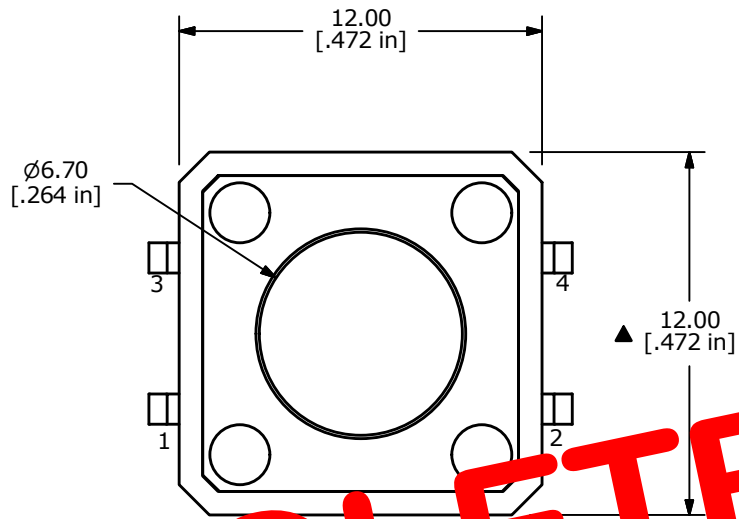


PCB MOUNTING



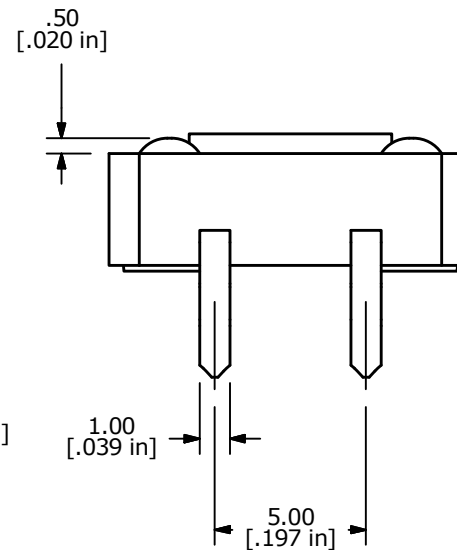
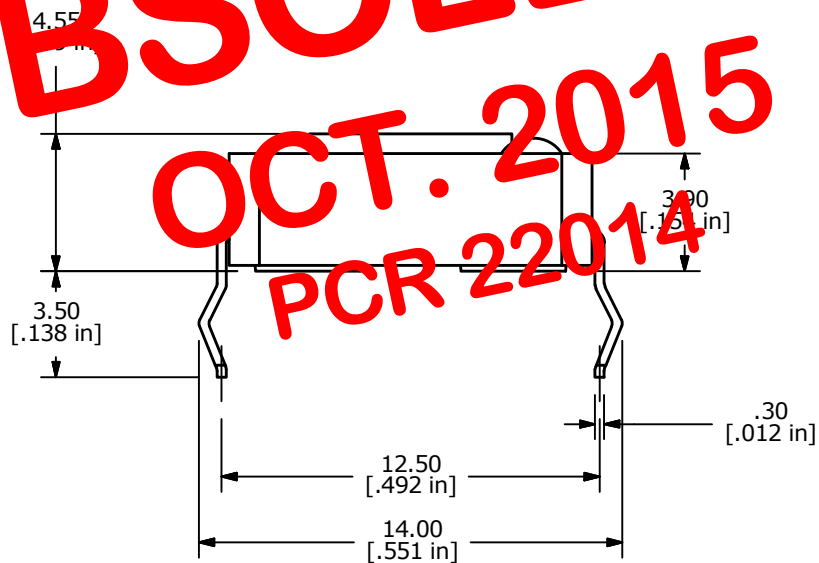
CIRCUIT: SPST



Technical drawing of a mechanical part, likely a bracket or support, showing dimensions in inches and millimeters. The drawing includes a top view and a side view. Dimensions are as follows:

- Top View:
 - Overall width: 4.55 in [115.5 mm]
 - Overall height: 3.50 in [88.9 mm]
 - Inner width: 3.90 in [99.1 mm]
 - Inner height: 1.50 in [38.1 mm]
 - Radius: .50 in [12.7 mm]
 - Small square feature: 1.00 in [25.4 mm]
 - Small circular feature: .125 in [3.175 mm]
- Side View:
 - Overall height: 1.50 in [38.1 mm]
 - Inner height: 1.00 in [25.4 mm]
 - Radius: .50 in [12.7 mm]

A large red stamp is overlaid on the drawing, reading: **OBSOLETE**
OCT. 2015
PCR 22014



NOTES:

1. ALL DIMENSIONS IN MM [INCH]
2. GENERAL TOLERANCE: X.X=± 0.4
X.XX=± 0.25
3. TERMINAL NUMBERS FOR REF. ONLY
- ▲ 4. RATING: 50mA @ 12VDC
5. TRAVEL: 0.30± 0.15mm
6. OPERATING FORCE: 260± 50mm
7. CONTACT RESISTANCE: 100mΩ MAX.
8. ELECTRICAL LIFE: 100,000 CYCLES
9. ▲ DENOTES CRITICAL PARAMETER
10. 2002/95/EC (ROHS) COMPLIANT



A	15878	RELEASED FOR PRODUCTION	3/23/06	PH	TITLE TL1100BF260Q				
REV	PCR NO	DESCRIPTION	DATE	BY					
THE INFORMATION CONTAINED IN THIS DOCUMENT IS PROPRIETARY TO E-SWITCH AND IS NOT TO BE COPIED OR TRANSFERRED					SCALE 2:1	DATE 3/23/2006	DR PH	DWG P001114	REV A