

PART
NAME

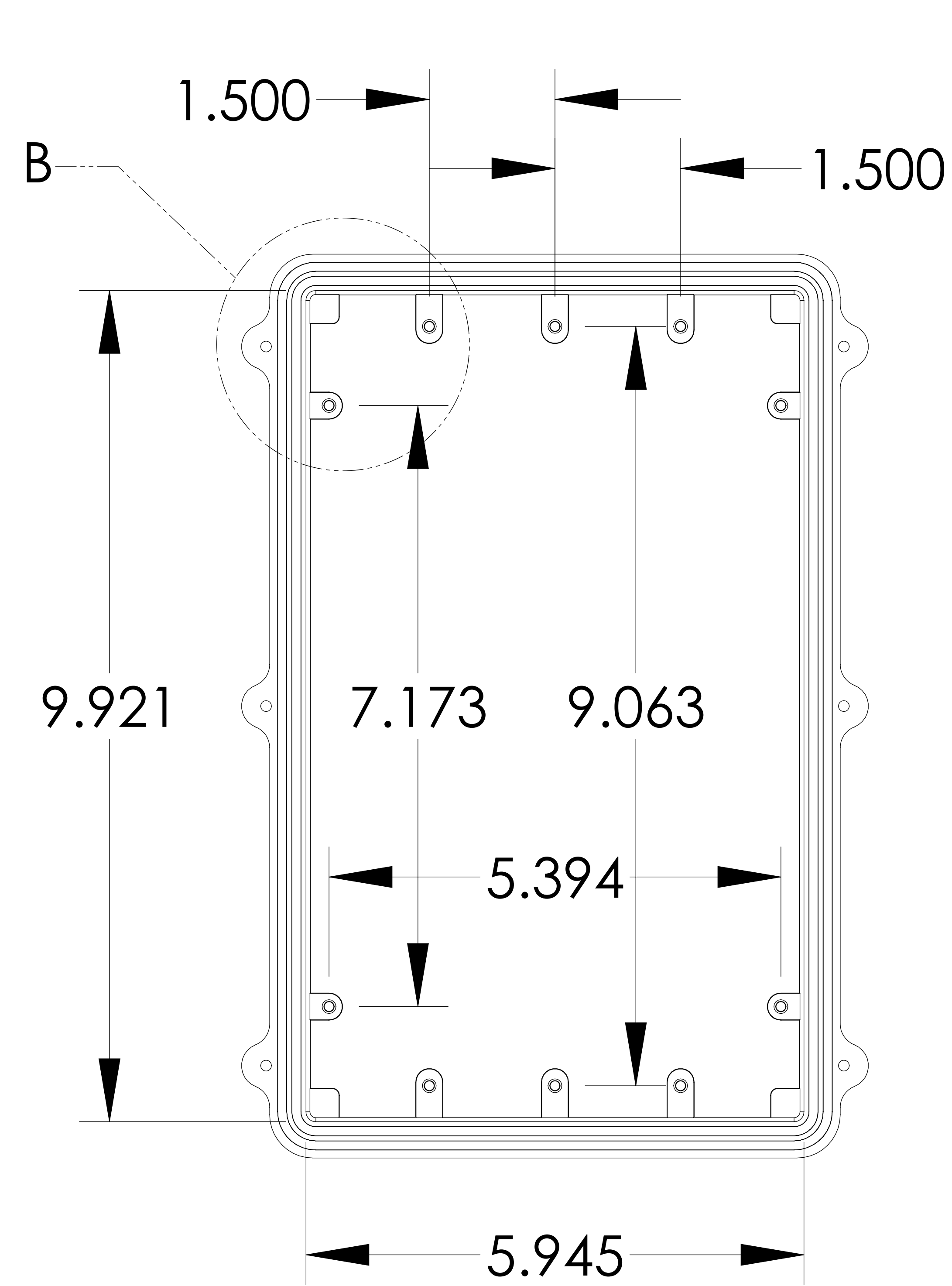
IP67 SERIES NEMA DIE CAST ALUMINUM BOX

PART
No.

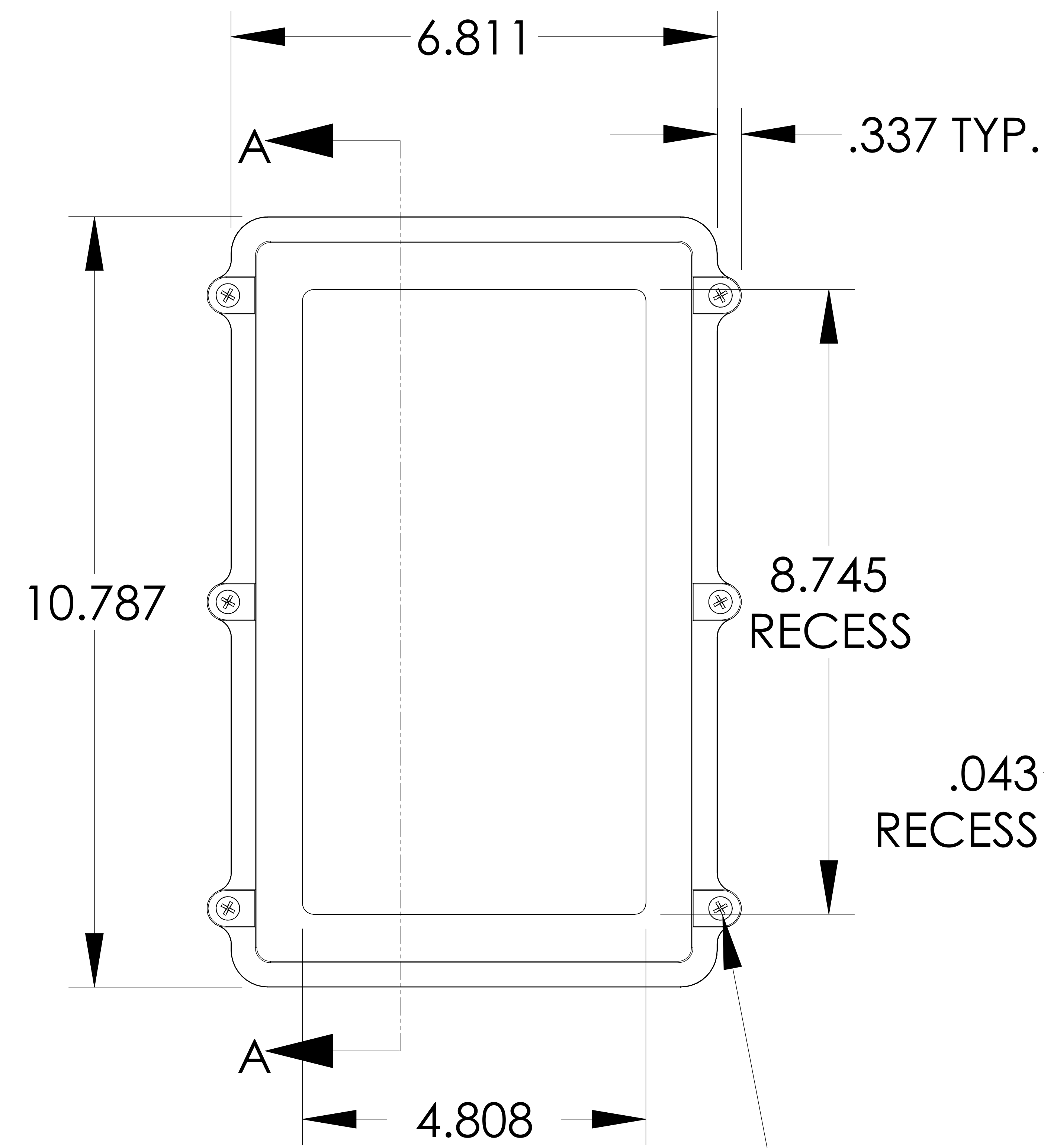
IPS-3911

REVISION
DATE

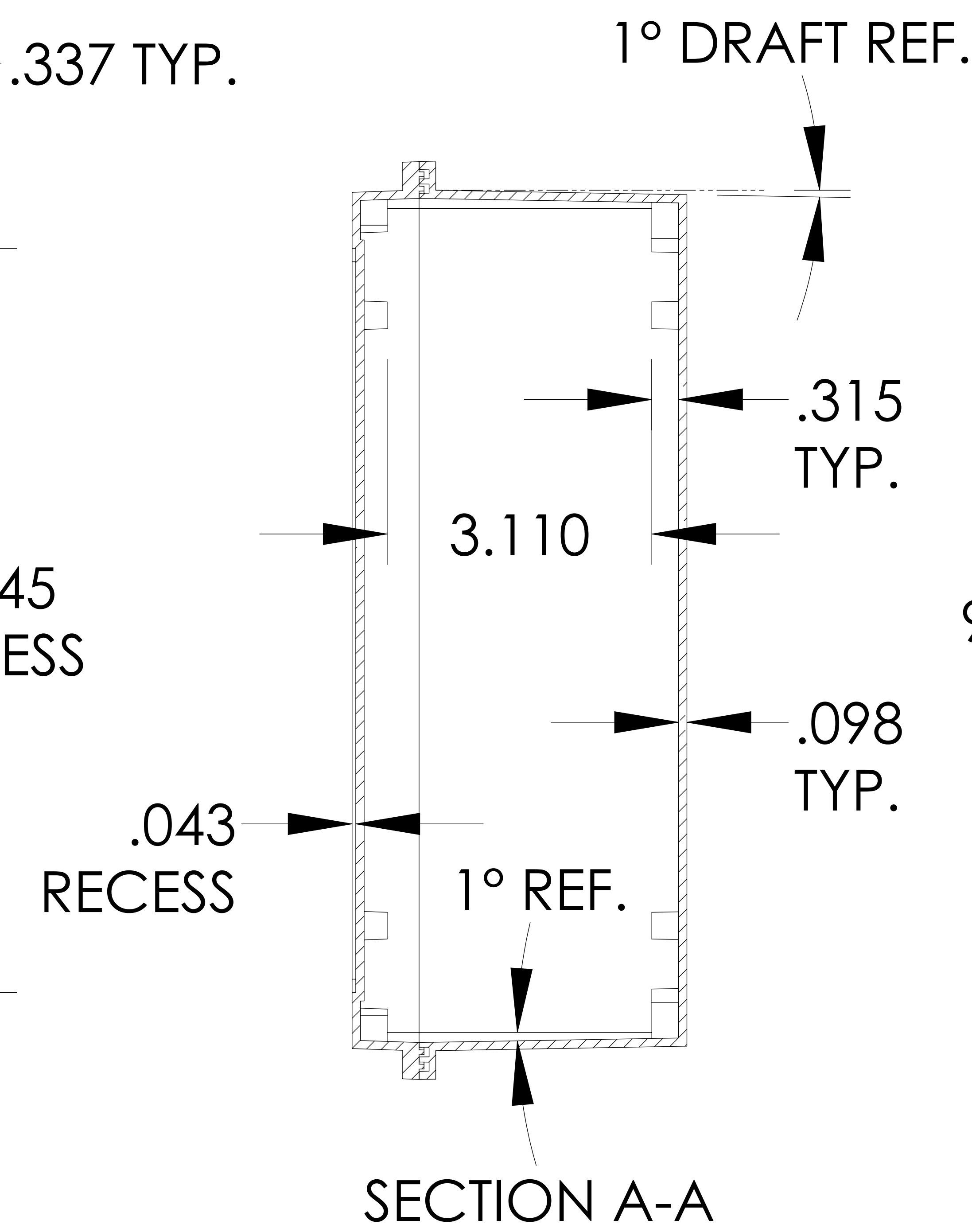
1/21/2011



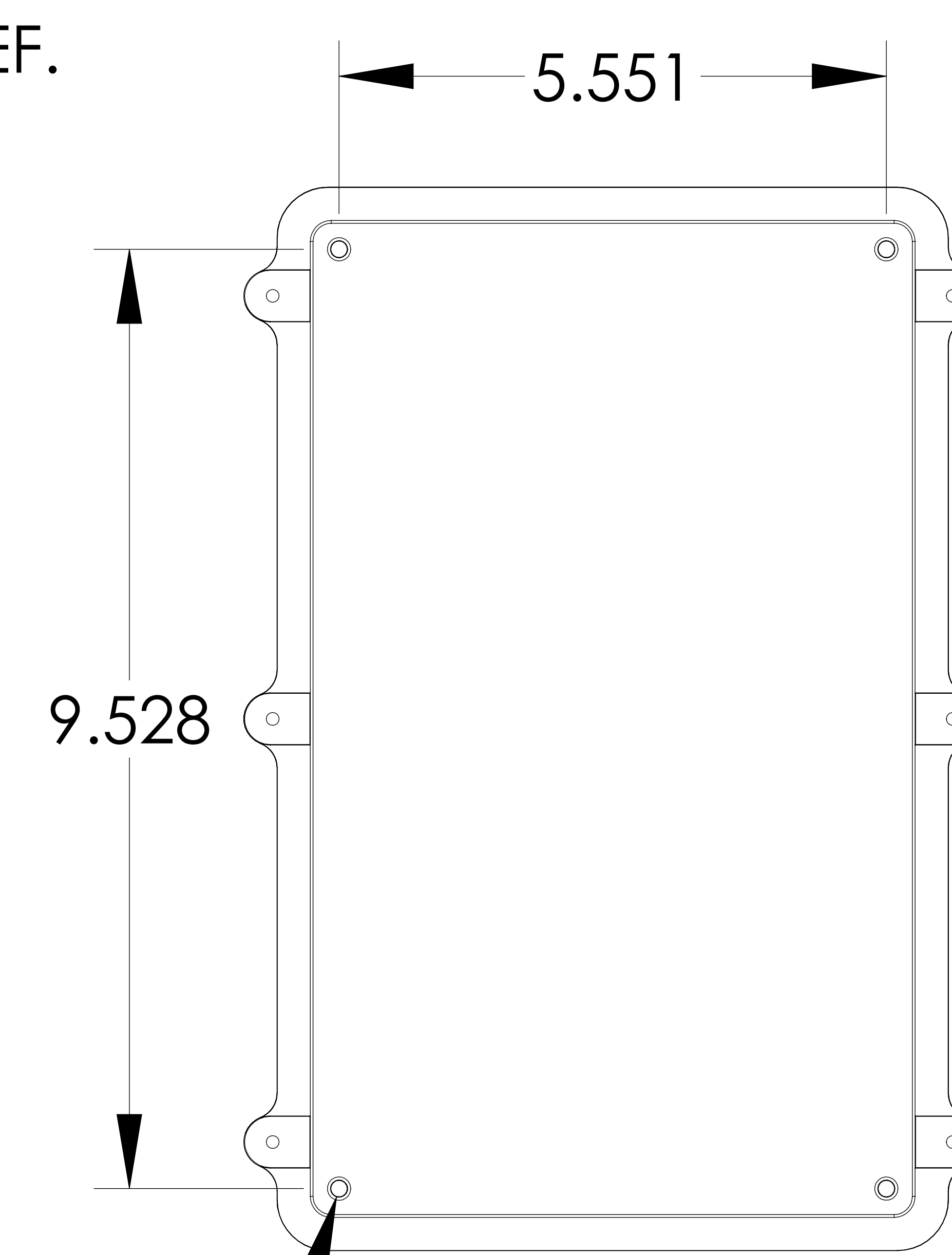
INSIDE BODY DETAILS



TOP VIEW

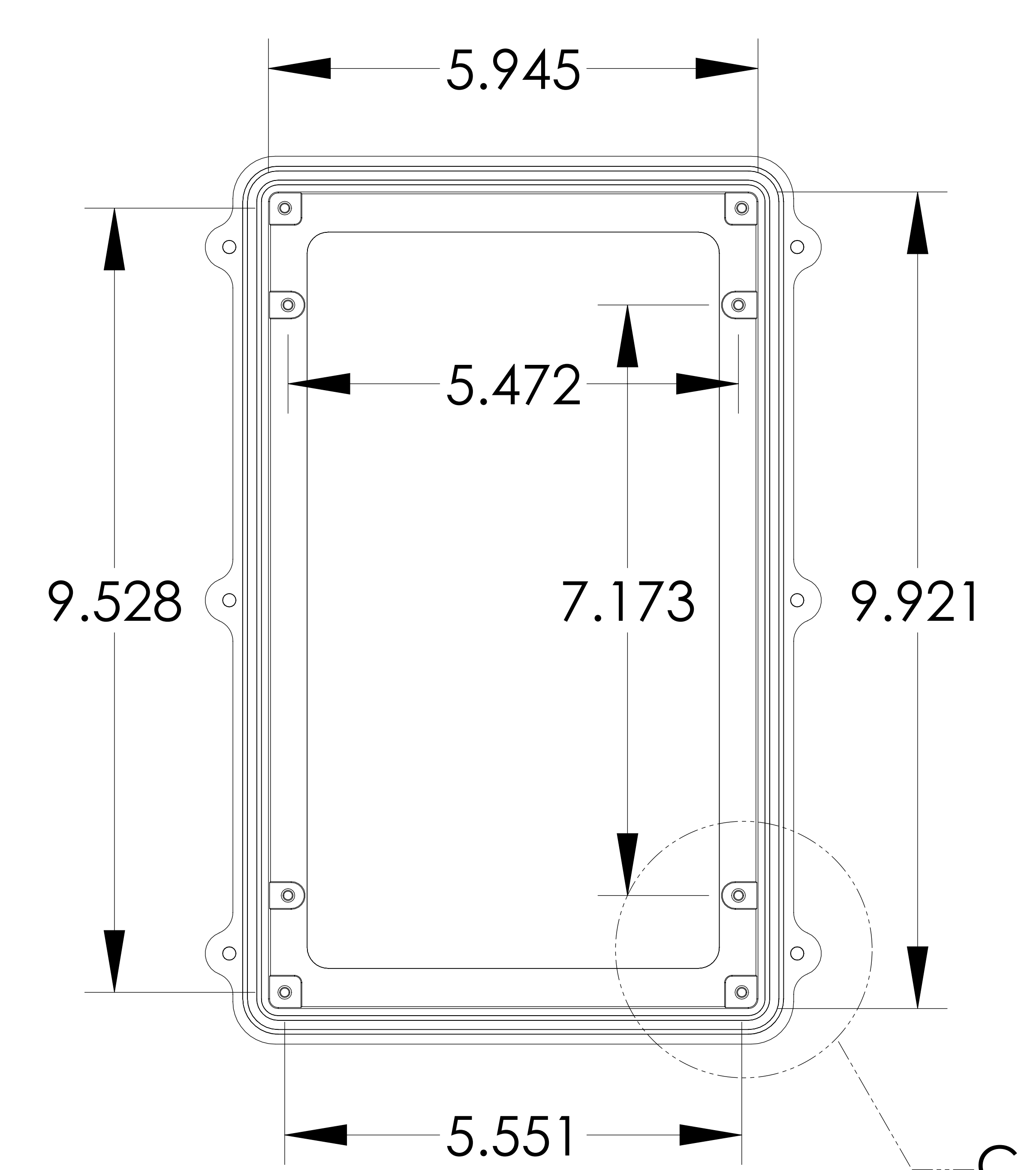


SIX (6) M4x0.7 PITCH x 20mm (.787") LG.
STAINLESS STEEL CAPTIVE SCREWS



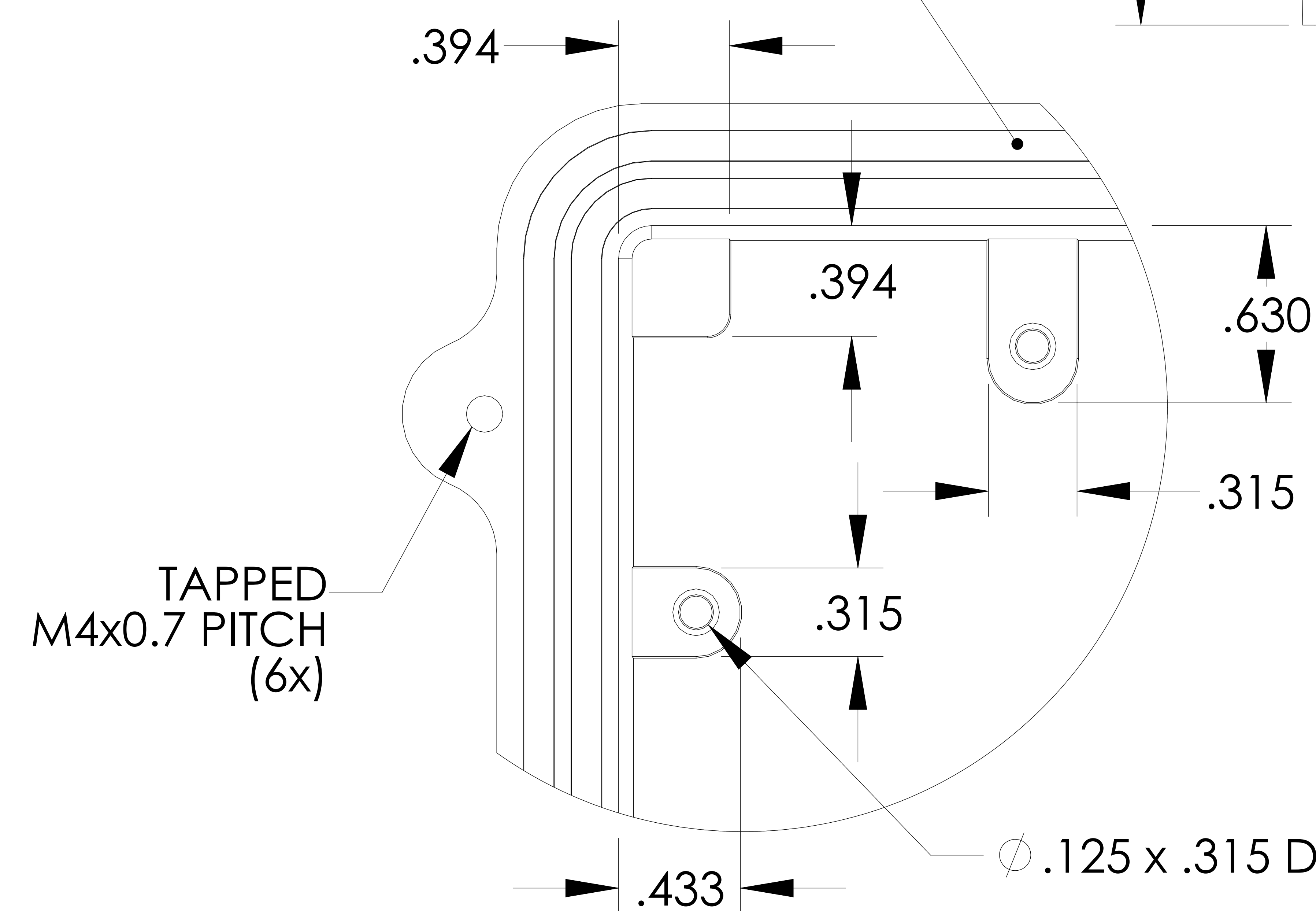
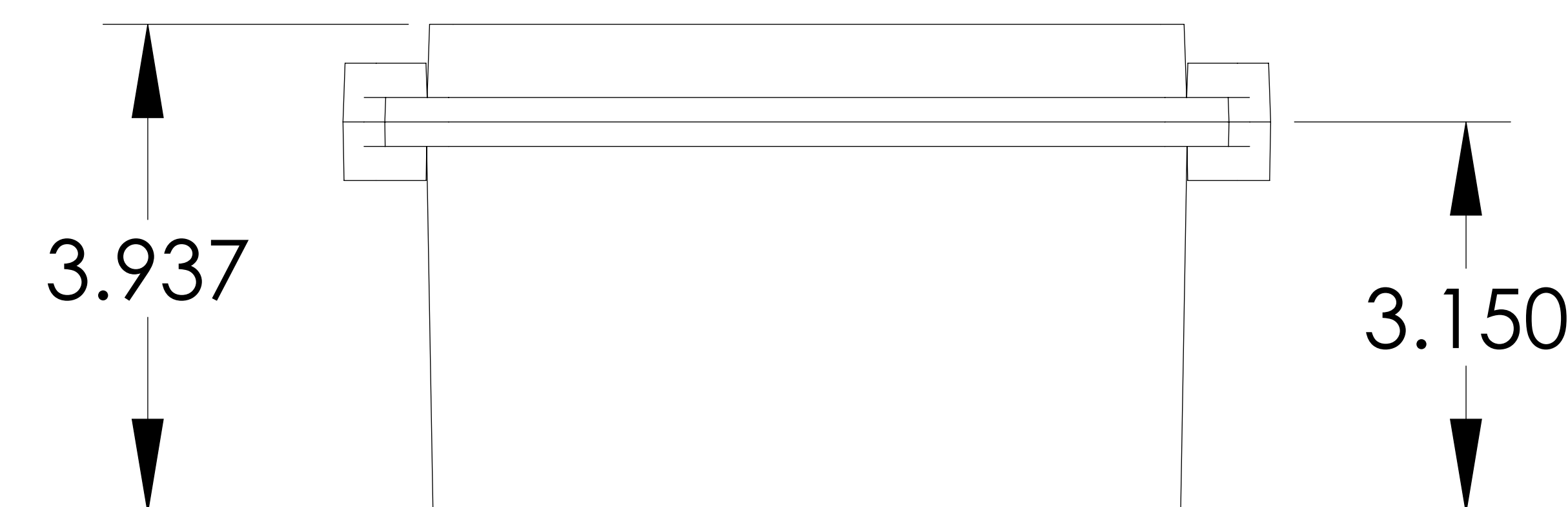
BOTTOM VIEW

Ø .176 x .315 DEEP BLIND HOLE (4x)
{ACCEPTS M5 x 10mm (.394") LG.
SELF-TAPPING SCREWS (NOT SUPPLIED)}



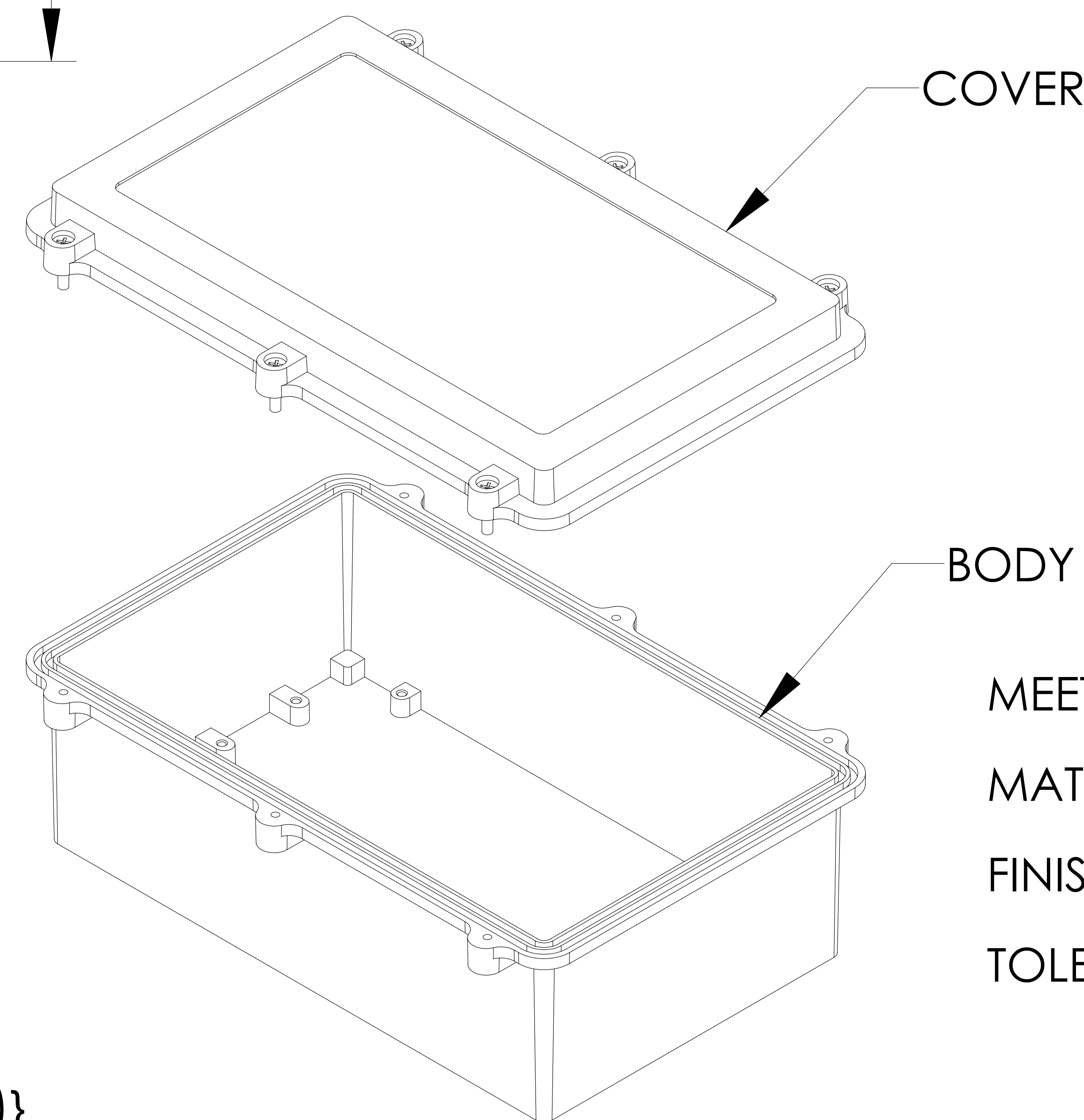
INSIDE COVER DETAILS

SILICONE GASKET



DETAIL B
SCALE 4 : 1

{ACCEPTS M3.5 x 6mm (.236") LG.
SELF-TAPPING SCREWS (NOT SUPPLIED)}



COVER

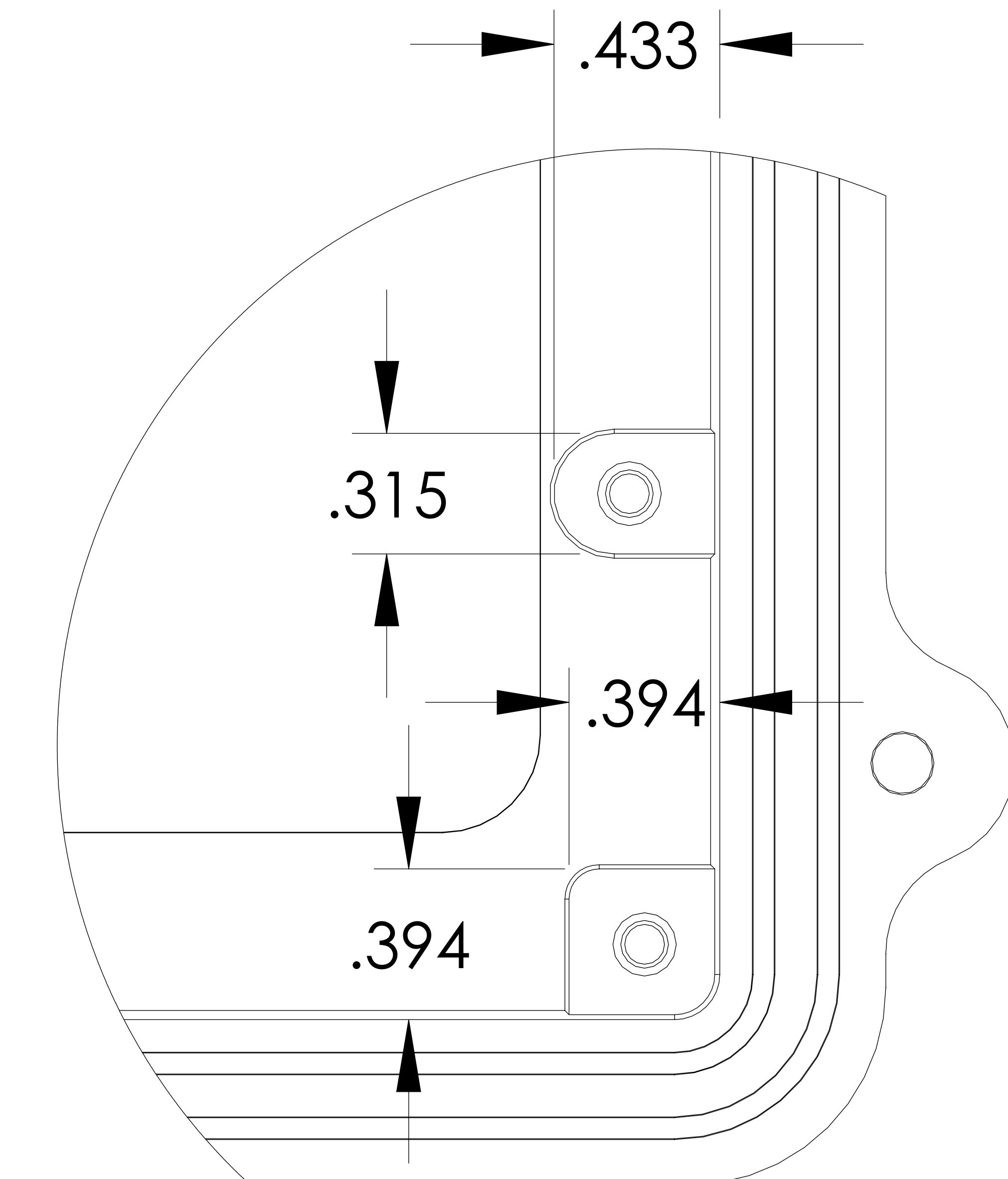
BODY

MEETS NEMA 1, 2, 4, 4X, 12, 13 AND IP67 RATINGS

MATERIAL - ALUMINUM ALLOY ADC-12

FINISH - NATURAL

TOLERANCES: ALL HOLE DIAMETERS $\pm .005$
ALL OTHER DIMENSIONS $\pm .015$



DETAIL C
SCALE 4 : 1

Mouser Electronics

Authorized Distributor

Click to View Pricing, Inventory, Delivery & Lifecycle Information:

[Bud Industries:](#)

[IPS-3911](#)