

Customer Information Sheet

DRAWING No.: S8401-46

SHEET 2 OF 2

IF IN DOUBT - ASK

(C)

NOT TO SCALE

THIRD ANGLE PROJECTION

ALL DIMENSIONS IN mm

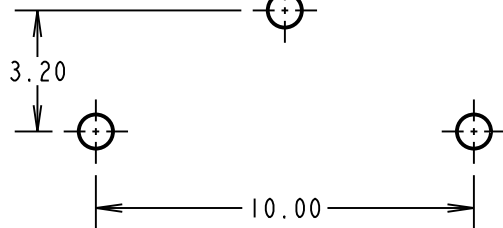
SPECIFICATIONS:

MOULDING: NYLON 46 G/F, UL94V-0, BLACK

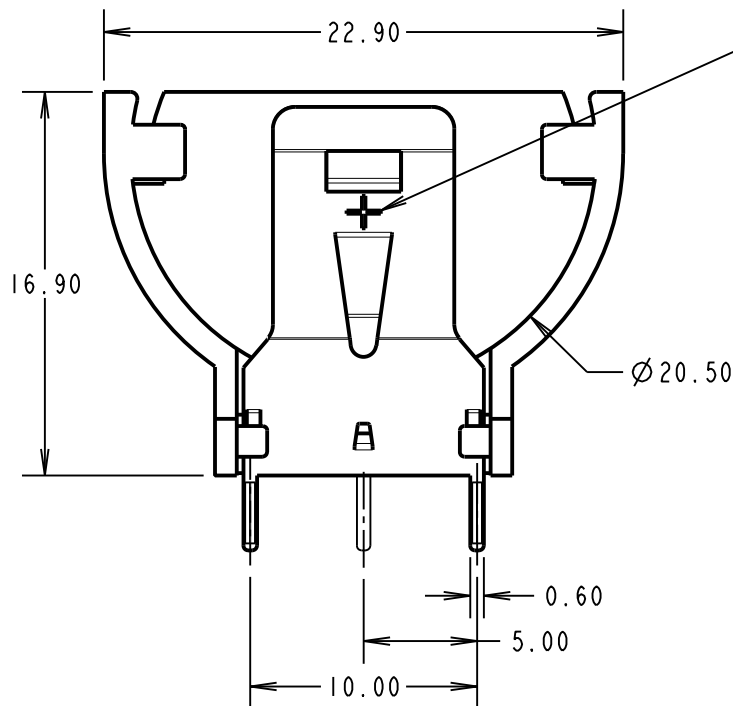
CONTACT: PHOSPHOR BRONZE

FINISH: 100% TIN OVER NICKEL

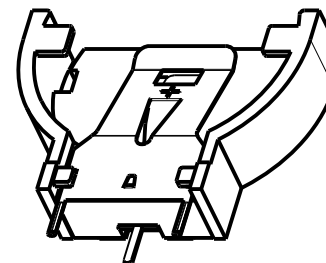
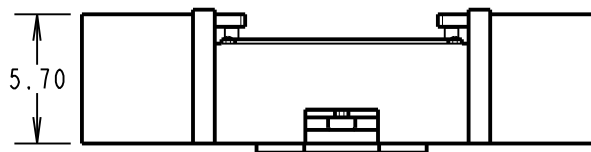
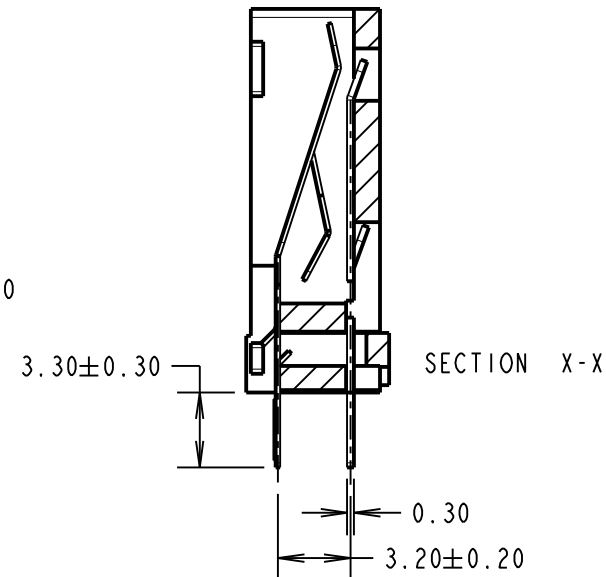
"-VE" ELECTRODE $\varnothing 0.90$ TYP



RECOMMENDED PCB LAYOUT
(TOLERANCE ± 0.05)



POLARITY MARKING, FOR
DRAWING ILLUSTRATION ONLY



NOTES:

- SUITABLE FOR THE FOLLOWING COIN CELLS CR2032 & BR2032.
- ALL TOLERANCES ARE ± 0.25 UNLESS OTHERWISE STATED.

SB	4	06.03.14	12406
NAME	ISS.	DATE	C/NOTE
APPROVED: S.BENNETT			
CHECKED: M.PLESTED			
DRAWN: R.ADDE			
CUSTOMER REF.:			
ASSEMBLY DRG:			

HARWIN

www.harwin.com
technical@harwin.com

THIS DRAWING AND ANY
INFORMATION OR DESCRIPTIVE
MATTER SET OUT HEREON ARE
CONFIDENTIAL AND COPYRIGHT
PROPERTY OF THE HARWIN
GROUP AND MUST NOT BE
DISCLOSED, LOANED, COPIED
OR USED FOR MANUFACTURING,
TENDERING OR FOR ANY
OTHER PURPOSE WITHOUT
THEIR WRITTEN PERMISSION.

TOLERANCES

X = ± 1 mm
X.X = ± 0.25 mm
X.XX = ± 0.10 mm
X.XXX = ± 0.01 mm
ANGLES = $\pm 5^\circ$

UNLESS STATED

MATERIAL:

SEE ABOVE

FINISH: SEE ABOVE

S/AREA:

mm²

TITLE:

VERTICAL THROUGH BOARD
BATTERY HOLDER

DRAWING NUMBER:

S8401-46

SHT
2
OF
2