

ON Semiconductor

Is Now



To learn more about onsemi™, please visit our website at
www.onsemi.com

onsemi and onsemi. and other names, marks, and brands are registered and/or common law trademarks of Semiconductor Components Industries, LLC dba "onsemi" or its affiliates and/or subsidiaries in the United States and/or other countries. onsemi owns the rights to a number of patents, trademarks, copyrights, trade secrets, and other intellectual property. A listing of onsemi product/patent coverage may be accessed at www.onsemi.com/site/pdf/Patent-Marking.pdf. onsemi reserves the right to make changes at any time to any products or information herein, without notice. The information herein is provided "as-is" and onsemi makes no warranty, representation or guarantee regarding the accuracy of the information, product features, availability, functionality, or suitability of its products for any particular purpose, nor does onsemi assume any liability arising out of the application or use of any product or circuit, and specifically disclaims any and all liability, including without limitation special, consequential or incidental damages. Buyer is responsible for its products and applications using onsemi products, including compliance with all laws, regulations and safety requirements or standards, regardless of any support or applications information provided by onsemi. "Typical" parameters which may be provided in onsemi data sheets and/or specifications can and do vary in different applications and actual performance may vary over time. All operating parameters, including "Typicals" must be validated for each customer application by customer's technical experts. onsemi does not convey any license under any of its intellectual property rights nor the rights of others. onsemi products are not designed, intended, or authorized for use as a critical component in life support systems or any FDA Class 3 medical devices or medical devices with a same or similar classification in a foreign jurisdiction or any devices intended for implantation in the human body. Should Buyer purchase or use onsemi products for any such unintended or unauthorized application, Buyer shall indemnify and hold onsemi and its officers, employees, subsidiaries, affiliates, and distributors harmless against all claims, costs, damages, and expenses, and reasonable attorney fees arising out of, directly or indirectly, any claim of personal injury or death associated with such unintended or unauthorized use, even if such claim alleges that onsemi was negligent regarding the design or manufacture of the part. onsemi is an Equal Opportunity/Affirmative Action Employer. This literature is subject to all applicable copyright laws and is not for resale in any manner. Other names and brands may be claimed as the property of others.



ON Semiconductor®

FGD3325G2-F085

EcoSPARK®2 330mJ, 250V, N-Channel Ignition IGBT

Features

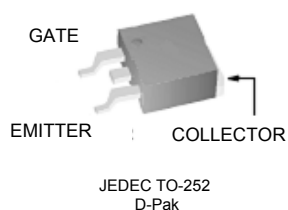
- SCIS Energy = 330mJ at $T_J = 25^\circ\text{C}$
- Logic Level Gate Drive
- Qualified to AEC Q101
- RoHS Compliant

Applications

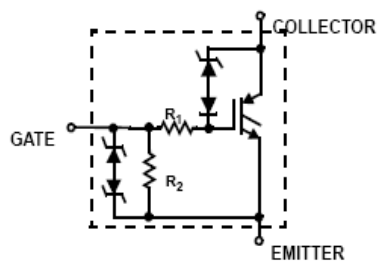
- Automotive Ignition Coil Driver Circuits
- Coil On Plug Applications



Package



Symbol



Absolute Maximum Ratings $T_A = 25^\circ\text{C}$ unless otherwise noted

| Symbol | Parameter | Ratings | Units |
|---------------|---|-------------|---------------------|
| BV_{CER} | Collector to Emitter Breakdown Voltage ($I_C = 1\text{mA}$) | 250 | V |
| BV_{ECS} | Emitter to Collector Voltage - Reverse Battery Condition ($I_C = 10\text{mA}$) | 28 | V |
| E_{SCIS25} | $I_{SCIS} = 14.8\text{A}$, $L = 3.0\text{mH}$, $R_{GE} = 1\text{K}\Omega$ $T_C = 25^\circ\text{C}$ | 330 | mJ |
| $E_{SCIS150}$ | $I_{SCIS} = 11.4\text{A}$, $L = 3.0\text{mH}$, $R_{GE} = 1\text{K}\Omega$ $T_C = 150^\circ\text{C}$ | 195 | mJ |
| I_{C25} | Collector Current Continuous, at $V_{GE} = 5.0\text{V}$, $T_C = 25^\circ\text{C}$ | 41 | A |
| I_{C110} | Collector Current Continuous, at $V_{GE} = 5.0\text{V}$, $T_C = 110^\circ\text{C}$ | 25 | A |
| V_{GEM} | Gate to Emitter Voltage Continuous | ± 10 | V |
| P_D | Power Dissipation Total, at $T_C = 25^\circ\text{C}$ | 150 | W |
| | Power Dissipation Derating, for $T_C > 25^\circ\text{C}$ | 1.0 | W/ $^\circ\text{C}$ |
| T_J | Operating Junction Temperature Range | -55 to +175 | $^\circ\text{C}$ |
| T_{STG} | Storage Junction Temperature Range | -55 to +175 | $^\circ\text{C}$ |
| T_L | Max. Lead Temp. for Soldering (Leads at 1.6mm from case for 10s) | 300 | $^\circ\text{C}$ |
| T_{PKG} | Reflow soldering according to JESD020C | 260 | $^\circ\text{C}$ |
| ESD | HBM-Electrostatic Discharge Voltage at 100pF, 1500 Ω | 4 | kV |
| | CDM-Electrostatic Discharge Voltage at 1 Ω | 2 | kV |

Package Marking and Ordering Information

| Device Marking | Device | Package | Reel Size | Tape Width | Quantity |
|----------------|----------------|---------|-----------|------------|------------|
| FGD3325G2 | FGD3325G2-F085 | TO252 | 330mm | 16mm | 2500 units |

Electrical Characteristics $T_A = 25^\circ\text{C}$ unless otherwise noted

| Symbol | Parameter | Test Conditions | Min | Typ | Max | Units |
|--------|-----------|-----------------|-----|-----|-----|-------|
|--------|-----------|-----------------|-----|-----|-----|-------|

Off State Characteristics

| | | | | | | |
|------------|--|--|----------|----------|-----|---------------|
| BV_{CER} | Collector to Emitter Breakdown Voltage | $I_{CE} = 2\text{mA}$, $V_{GE} = 0$, $R_{GE} = 1\text{K}\Omega$, $T_J = -40$ to 150°C | 225 | - | 275 | V |
| BV_{CES} | Collector to Emitter Breakdown Voltage | $I_{CE} = 10\text{mA}$, $V_{GE} = 0\text{V}$, $R_{GE} = 0$, $T_J = -40$ to 150°C | 240 | - | 290 | V |
| BV_{ECS} | Emitter to Collector Breakdown Voltage | $I_{CE} = -75\text{mA}$, $V_{GE} = 0\text{V}$, $T_J = 25^\circ\text{C}$ | 28 | - | - | V |
| BV_{GES} | Gate to Emitter Breakdown Voltage | $I_{GES} = \pm 2\text{mA}$ | ± 12 | ± 14 | - | V |
| I_{CER} | Collector to Emitter Leakage Current | $V_{CE} = 175\text{V}$, $R_{GE} = 1\text{K}\Omega$ $T_J = 25^\circ\text{C}$ | - | - | 25 | μA |
| | | $T_J = 150^\circ\text{C}$ | - | - | 1 | mA |
| I_{ECS} | Emitter to Collector Leakage Current | $V_{EC} = 24\text{V}$, $T_J = 25^\circ\text{C}$ | - | - | 1 | mA |
| | | $T_J = 150^\circ\text{C}$ | - | - | 40 | |
| R_1 | Series Gate Resistance | | - | 120 | - | Ω |
| R_2 | Gate to Emitter Resistance | | 10K | - | 30K | Ω |

On State Characteristics

| | | | | | | |
|---------------|---|--|---|------|------|---|
| $V_{CE(SAT)}$ | Collector to Emitter Saturation Voltage | $I_{CE} = 6\text{A}$, $V_{GE} = 4\text{V}$, $T_J = 25^\circ\text{C}$ | - | 1.15 | 1.25 | V |
| $V_{CE(SAT)}$ | Collector to Emitter Saturation Voltage | $I_{CE} = 10\text{A}$, $V_{GE} = 4.5\text{V}$, $T_J = 150^\circ\text{C}$ | - | 1.35 | 1.50 | V |
| $V_{CE(SAT)}$ | Collector to Emitter Saturation Voltage | $I_{CE} = 15\text{A}$, $V_{GE} = 4.5\text{V}$, $T_J = 150^\circ\text{C}$ | - | 1.68 | 1.85 | V |

Electrical Characteristics $T_A = 25^\circ\text{C}$ unless otherwise noted

| Symbol | Parameter | Test Conditions | Min | Typ | Max | Units |
|--------|-----------|-----------------|-----|-----|-----|-------|
|--------|-----------|-----------------|-----|-----|-----|-------|

Dynamic Characteristics

| | | | | | | |
|--------------|-----------------------------------|---|------|-----|-----|----|
| $Q_{G(ON)}$ | Gate Charge | $I_{CE} = 10\text{A}$, $V_{CE} = 12\text{V}$, $V_{GE} = 5\text{V}$ | - | 21 | - | nC |
| $V_{GE(TH)}$ | Gate to Emitter Threshold Voltage | $I_{CE} = 1\text{mA}$, $V_{CE} = V_{GE}$, $T_J = 25^\circ\text{C}$ | 1.3 | 1.5 | 2.2 | V |
| | | $T_J = 150^\circ\text{C}$ | 0.75 | 1.1 | 1.8 | V |
| V_{GEP} | Gate to Emitter Plateau Voltage | $V_{CE} = 12\text{V}$, $I_{CE} = 10\text{A}$ | - | 2.7 | - | V |

Switching Characteristics

| | | | | | | |
|---------------|---------------------------------------|---|---|-----|----|---------------|
| $t_{d(ON)R}$ | Current Turn-On Delay Time-Resistive | $V_{CE} = 14\text{V}$, $R_L = 1\Omega$ | - | 0.8 | 4 | μs |
| t_{rR} | Current Rise Time-Resistive | $V_{GE} = 5\text{V}$, $R_G = 1\text{K}\Omega$, $T_J = 25^\circ\text{C}$ | - | 1.2 | 7 | μs |
| $t_{d(OFF)L}$ | Current Turn-Off Delay Time-Inductive | $V_{CE} = 190\text{V}$, $L = 1\text{mH}$, $V_{GE} = 5\text{V}$, $R_G = 1\text{K}\Omega$ | - | 5.1 | 15 | μs |
| t_{fL} | Current Fall Time-Inductive | $I_{CE} = 6.5\text{A}$, $T_J = 25^\circ\text{C}$ | - | 2.2 | 15 | μs |

Thermal Characteristics

| | | | | | | |
|-----------------|-------------------------------------|--|---|---|---|--------------------|
| $R_{\theta JC}$ | Thermal Resistance Junction to Case | | - | - | 1 | $^\circ\text{C/W}$ |
|-----------------|-------------------------------------|--|---|---|---|--------------------|

Typical Performance Curves

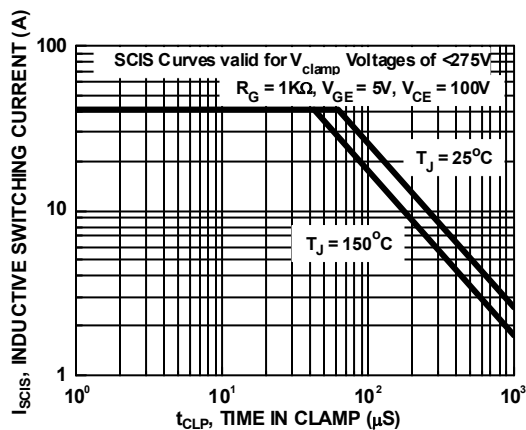


Figure 1. Self Clamped Inductive Switching Current vs. Time in Clamp

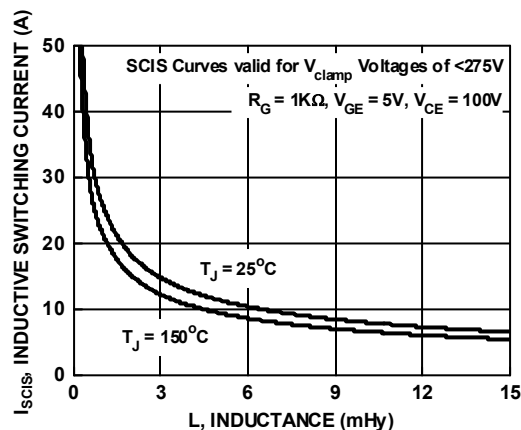


Figure 2. Self Clamped Inductive Switching Current vs. Inductance

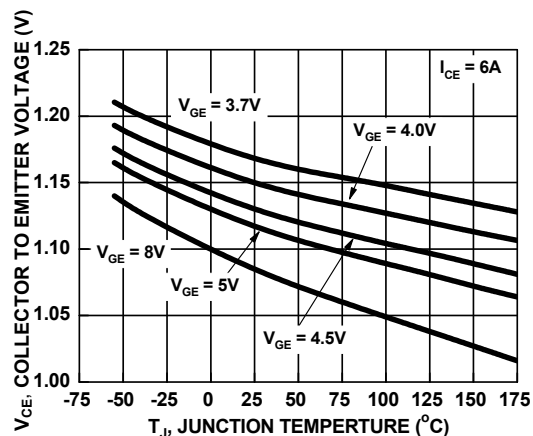


Figure 3. Collector to Emitter On-State Voltage vs. Junction Temperature

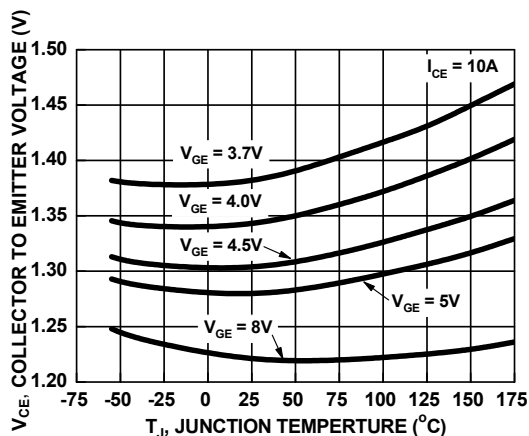


Figure 4. Collector to Emitter On-State Voltage vs. Junction Temperature

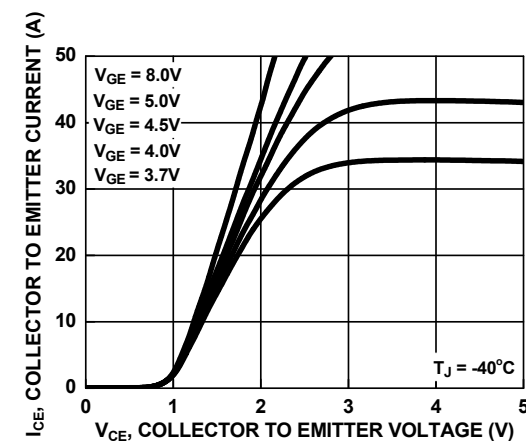


Figure 5. Collector to Emitter On-State Voltage vs. Collector Current

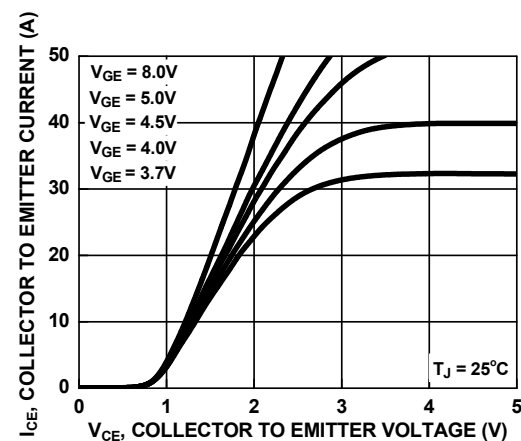


Figure 6. Collector to Emitter On-State Voltage vs. Collector Current

Typical Performance Curves (Continued)

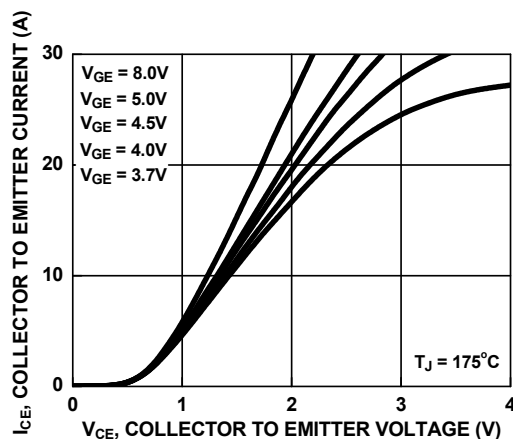


Figure 7. Collector to Emitter On-State Voltage vs. Collector Current

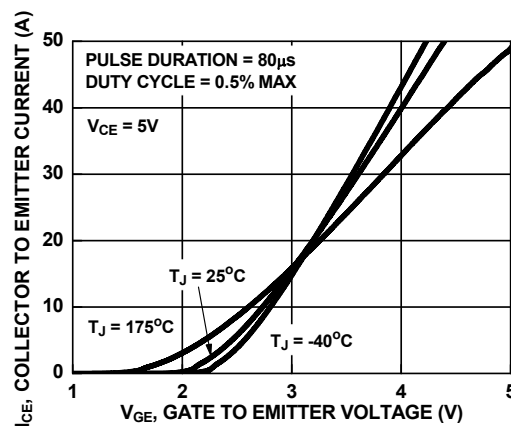


Figure 8. Transfer Characteristics

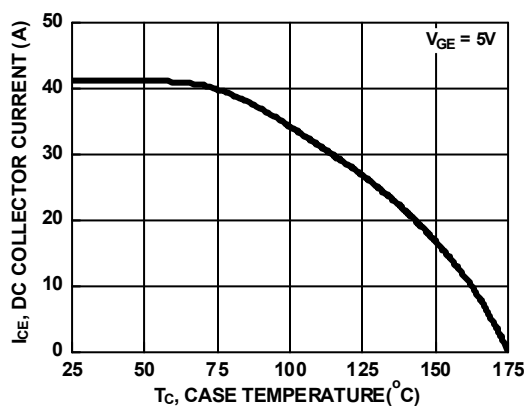


Figure 9. DC Collector Current vs. Case Temperature

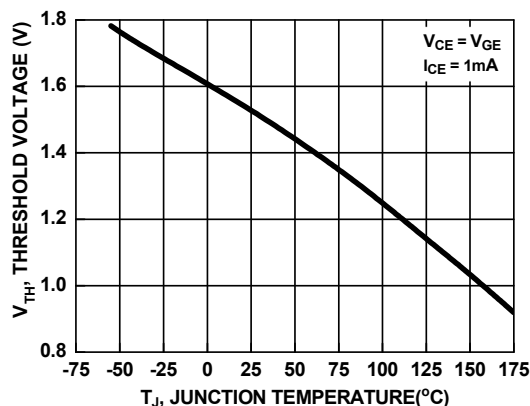


Figure 10. Threshold Voltage vs. Junction Temperature

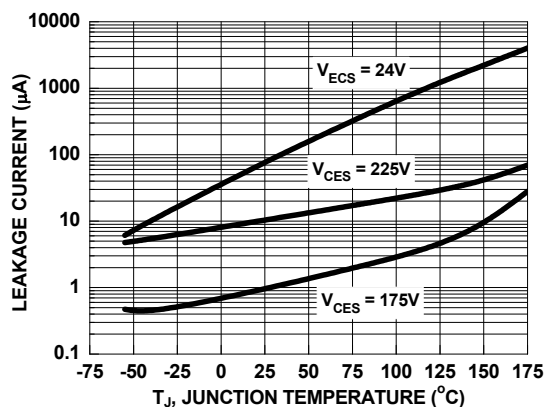


Figure 11. Leakage Current vs. Junction Temperature

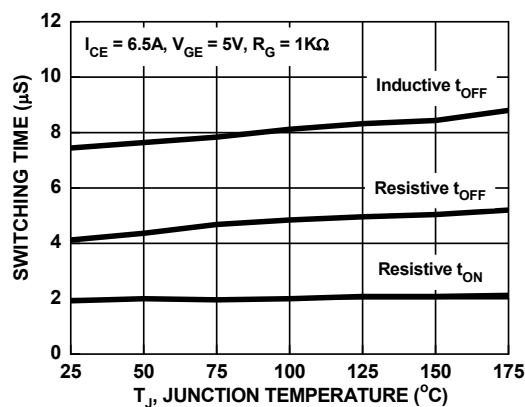


Figure 12. Switching Time vs. Junction Temperature

Typical Performance Curves (Continued)

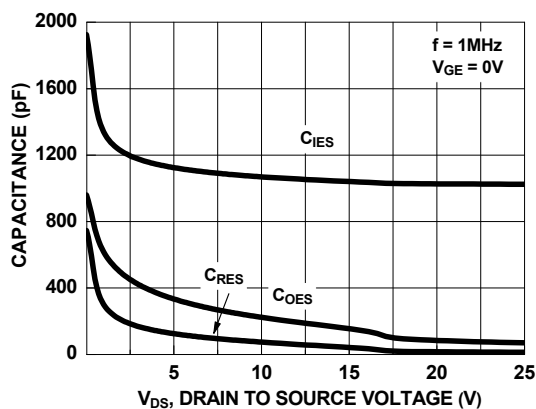


Figure 13. Capacitance vs. Collector to Emitter Voltage

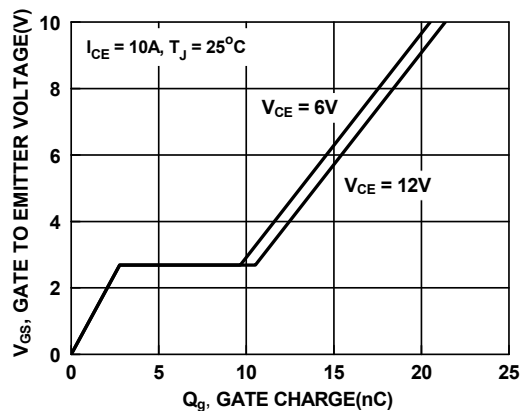


Figure 14. Gate Charge

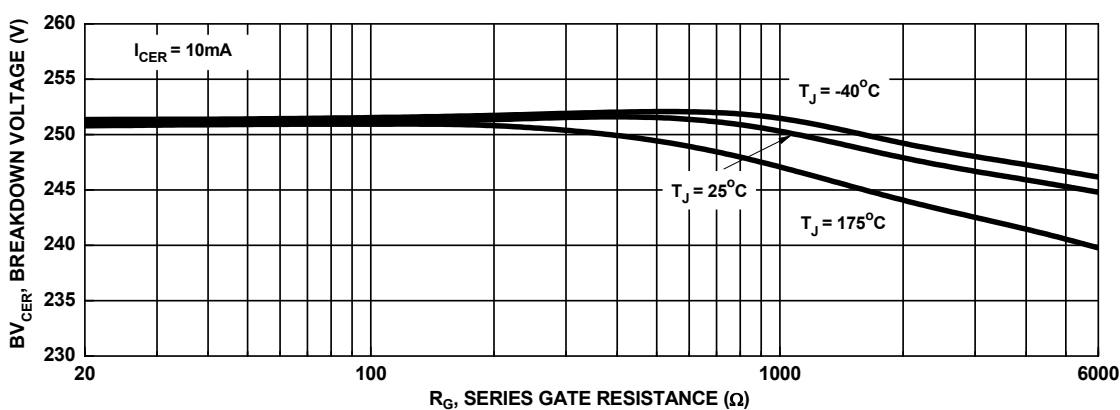


Figure 15. Break down Voltage vs. Series Gate Resistance

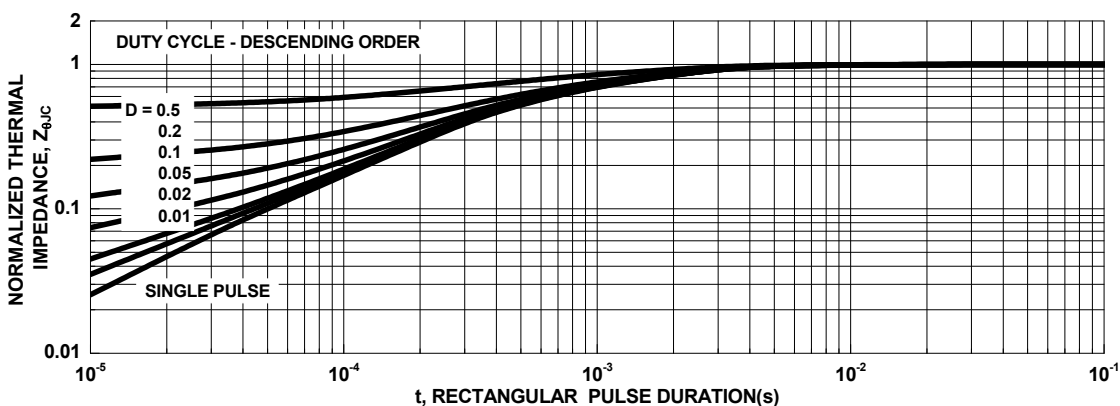


Figure 16. IGBT Normalized Transient Thermal Impedance, Junction to Case

Typical Performance Curves

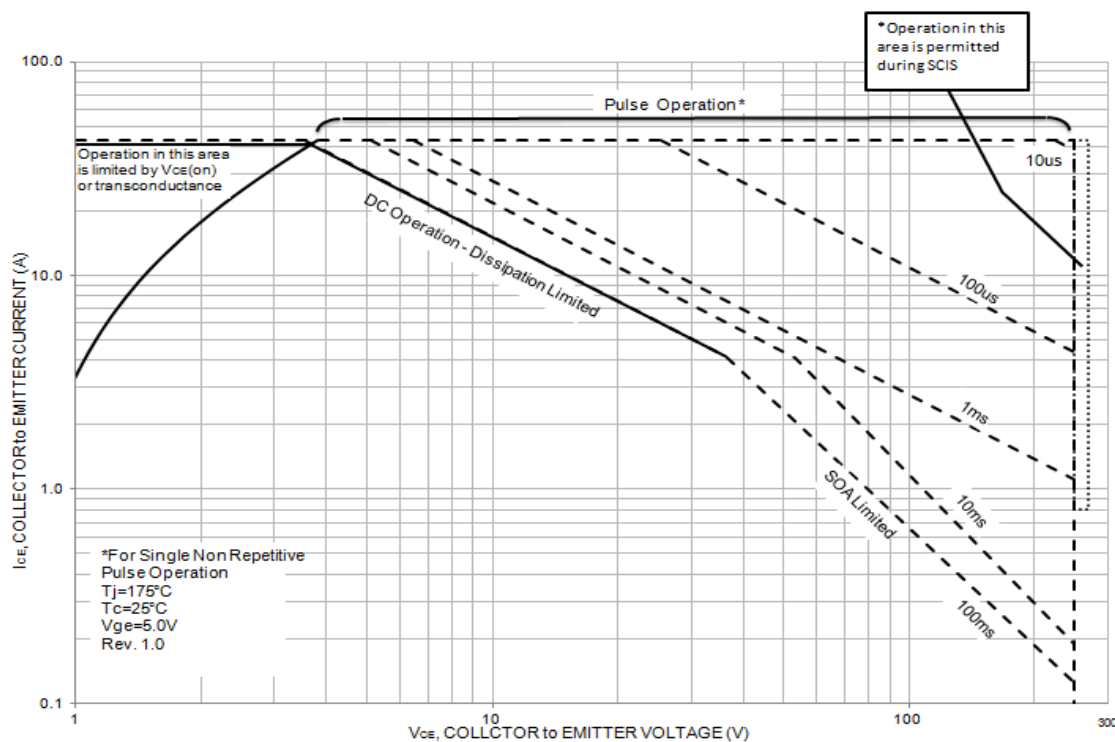


Figure 17. Forward Safe Operating Area

Test Circuit and Waveforms

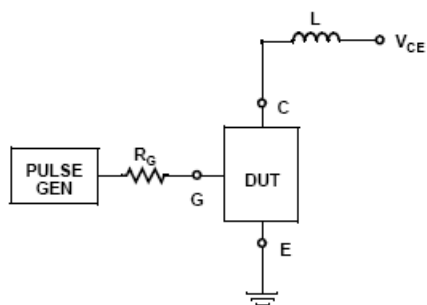


Figure 17. Inductive Switching Test Circuit

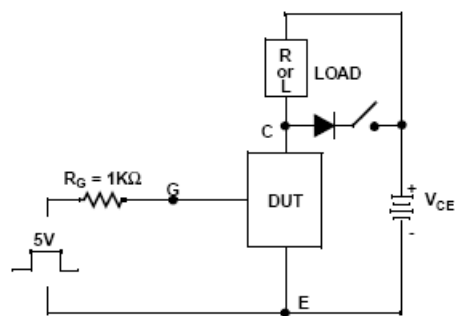


Figure 18. t_{ON} and t_{OFF} Switching Test Circuit

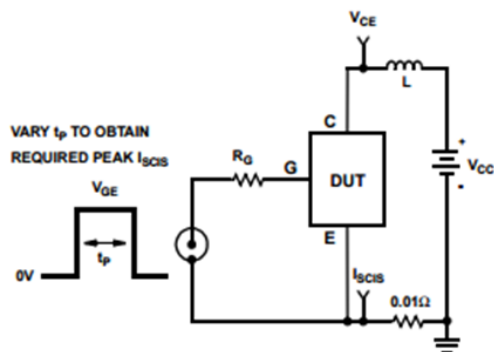


Figure 19. Energy Test Circuit

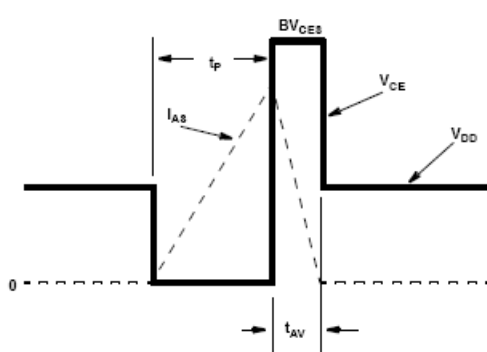
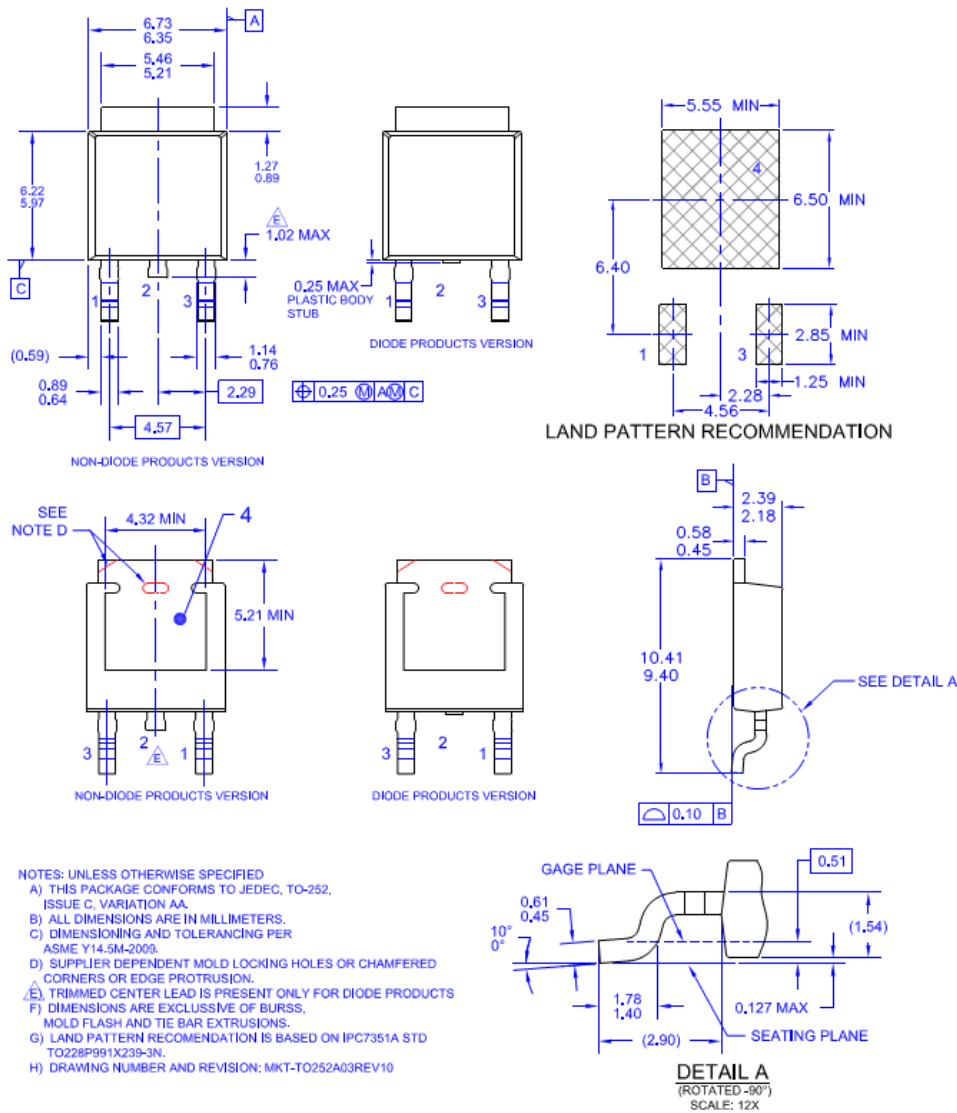


Figure 20. Energy Waveforms

Mechanical Dimensions

D-PAK



Package drawings are provided as a service to customers considering ON Semiconductor components. Drawings may change in any manner without notice. Please note the revision and/or date on the drawing and contact a ON Semiconductor representative to verify or obtain the most recent revision. Package specifications do not expand the terms of ON Semiconductor's worldwide terms and conditions, specifically the warranty therein, which covers ON Semiconductor products.

ON Semiconductor and  are trademarks of Semiconductor Components Industries, LLC dba ON Semiconductor or its subsidiaries in the United States and/or other countries. ON Semiconductor owns the rights to a number of patents, trademarks, copyrights, trade secrets, and other intellectual property. A listing of ON Semiconductor's product/patent coverage may be accessed at www.onsemi.com/site/pdf/Patent-Marking.pdf. ON Semiconductor reserves the right to make changes without further notice to any products herein. ON Semiconductor makes no warranty, representation or guarantee regarding the suitability of its products for any particular purpose, nor does ON Semiconductor assume any liability arising out of the application or use of any product or circuit, and specifically disclaims any and all liability, including without limitation special, consequential or incidental damages. Buyer is responsible for its products and applications using ON Semiconductor products, including compliance with all laws, regulations and safety requirements or standards, regardless of any support or applications information provided by ON Semiconductor. "Typical" parameters which may be provided in ON Semiconductor data sheets and/or specifications can and do vary in different applications and actual performance may vary over time. All operating parameters, including "Typicals" must be validated for each customer application by customer's technical experts. ON Semiconductor does not convey any license under its patent rights nor the rights of others. ON Semiconductor products are not designed, intended, or authorized for use as a critical component in life support systems or any FDA Class 3 medical devices or medical devices with a same or similar classification in a foreign jurisdiction or any devices intended for implantation in the human body. Should Buyer purchase or use ON Semiconductor products for any such unintended or unauthorized application, Buyer shall indemnify and hold ON Semiconductor and its officers, employees, subsidiaries, affiliates, and distributors harmless against all claims, costs, damages, and expenses, and reasonable attorney fees arising out of, directly or indirectly, any claim of personal injury or death associated with such unintended or unauthorized use, even if such claim alleges that ON Semiconductor was negligent regarding the design or manufacture of the part. ON Semiconductor is an Equal Opportunity/Affirmative Action Employer. This literature is subject to all applicable copyright laws and is not for resale in any manner.

PUBLICATION ORDERING INFORMATION

LITERATURE FULFILLMENT:

Literature Distribution Center for ON Semiconductor
19521 E. 32nd Pkwy, Aurora, Colorado 80011 USA
Phone: 303-675-2175 or 800-344-3860 Toll Free USA/Canada
Fax: 303-675-2176 or 800-344-3867 Toll Free USA/Canada
Email: orderlit@onsemi.com

N. American Technical Support: 800-282-9855 Toll Free
USA/Canada

Europe, Middle East and Africa Technical Support:
Phone: 421 33 790 2910

Japan Customer Focus Center
Phone: 81-3-5817-1050

ON Semiconductor Website: www.onsemi.com

Order Literature: <http://www.onsemi.com/orderlit>

For additional information, please contact your local
Sales Representative