

NOTES:

Mechanical Note:

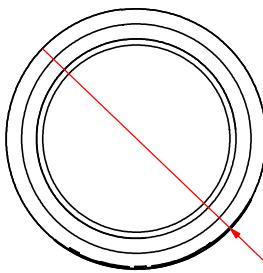
1. Overall Height: ~ 87 mm from Mounting Surface
2. Weight: 0.42 lbs
3. IP Rating: IP67
4. Operating temp: -35 °C to +65 °C
5. Storage Temp: -45 °C to +65 °C
6. Color: White
7. Mounting: Permanent Mount (See "Recommended Mounting Conditions")
8. Installation Torque: 4 - 6 ft*lbs on Nut

Electrical Note:

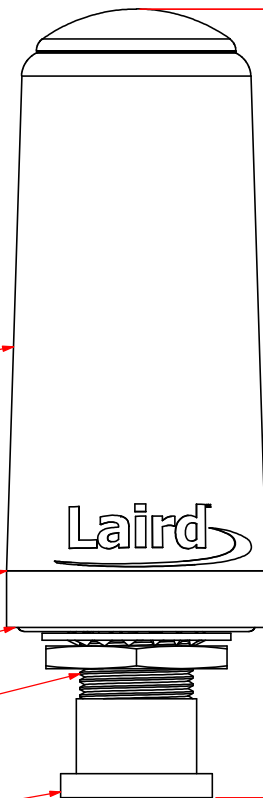
1. Frequency: VSWR
698 - 806 MHz: < 2.5 : 1.0
806 - 960 MHz: < 2.0 : 1.0
1710 - 2700 MHz: < 2.0 : 1.0
2. Nominal Impedance: 50 OHM
3. Polarization: Vertical
4. Pattern: Omnidirectional
5. Ground Plane: No Ground Plane Required

Packaging Note:

1. Laird Technologies SKU: TRA6927M3PWN-001
2. Package: S1136
3. Units per Package: 1
4. Package Label: Printed Bag



(Ø 37)



(87)

(111)

High Strength Impact Resistant ABS Radome

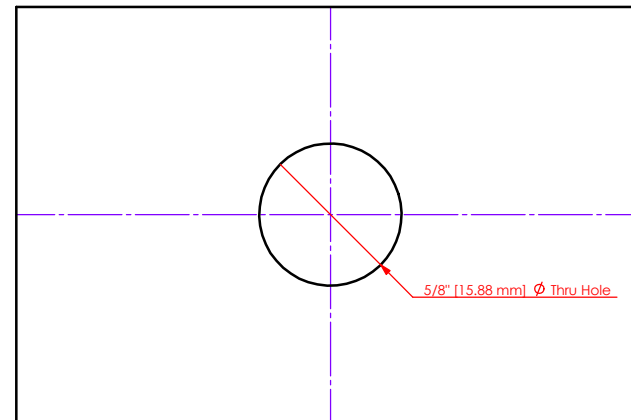
Rugged Insert Molded Design

O-ring must be in place during installation
and must get full compression on the
ground plane or surface

Permanent Mount with Hardware
Standard N-Female Termination

Protective cap during shipping
Remove before installation

REVISIONS					
ZONE	REV.	DESCRIPTION	DATE	DRAWN BY	ECR NUMBER
ALL	AA	INITIAL RELEASE	23SEP14	BPH	ECN-IAS-03118



5/8" (15.88 mm) Ø Thru Hole

Recommended Mounting Conditions:
Surface should be as flat and clean as possible
Hole should be centered as much as possible

Notes:

THE COMPONENT(S), INCLUDING ANY PLATING, FINISHES, COATINGS, CHEMICALS AND SURFACES TREATMENTS, SUPPLIED IN THIS DOCUMENT/DRAWING MUST CONFORM AND COMPLY WITH THE LATEST ISSUE OF LAIRD TECHNOLOGIES SPECIFICATION LT-GES-001, WHICH FULLY INCLUDES BUT IS NOT LIMITED TO ALL CONTENTS OF EU DIRECTIVES 2002/95/EC (ROHS DIRECTIVE), AS WELL AS INCLUDES REQUIREMENTS OF THE JOINT INDUSTRY GUIDE STANDARD JIG-101, APRIL 2005. THE COMPONENT(S) IN THIS DOCUMENT/DRAWING MAY BE SUBJECT TO A FULL COMPOUND ANALYSIS FOR PROOF OF COMPLIANCE. THE LATEST ISSUE OF LAIRD TECHNOLOGIES SPECIFICATION LT-GES-001, (GENERAL SPECIFICATION FOR THE ENVIRONMENT) IS READILY AVAILABLE UPON REQUEST FROM THE SUPPLIER.

UNLESS OTHERWISE NOTED, THIS DOCUMENT CONTAINS LAIRD TECHNOLOGIES CONFIDENTIAL INFORMATION. REPRODUCTION, USE, DISCLOSURE OR TRANSMITTAL OF ALL OR ANY PART OF THIS DOCUMENT IS PROHIBITED EXCEPT TO THE EXTENT APPROVED IN WRITING BY AN AUTHORIZED REPRESENTATIVE OF LAIRD TECHNOLOGIES. LAIRD TECHNOLOGIES RESERVES ALL RIGHTS UNDER PATENTS, TRADEMARKS, COPY RIGHTS AND TRADE SECRET COPYRIGHT, LAIRD TECHNOLOGIES 2008, ALL RIGHTS RESERVED.

MATERIAL: N/A

FINISH: N/A

APPROVALS DATE

ME: B. HOFFMAN 23SEP14

RF: R. HARO 23SEP14

EM:

Prod:

WEIGHT:

THIRD ANGLE PROJECTION

INTERPRET DIMENSIONING AND TOLERANCING IN ACCORDANCE WITH ASME Y14.5M-1994

DO NOT SCALE DRAWING

TOLERANCES UNLESS OTHERWISE SPECIFIED

DIMENSIONS ARE IN MILLIMETERS

ANGLE: 0 PLACE DECIMAL: ±30°

1 PLACE DECIMAL: ±0.5

2 PLACE DECIMAL: ±0.13

Laird TECHNOLOGIES 1751 WILKENING COURT
SCHAUMBURG, IL 60173
USA

TITLE: MOUNTING & OUTLINE
TRA6927M3PWN-001

SIZE DWG NO. TRA6927M3PWN-001MO

REV AA

SCALE: SHEET 1 OF 1