

DESIGNED & DIMENSIONED
IN MILLIMETERS[INCHES]

TABLE 1

ITEM	COMPONENT	-HN	-H
1	SUB ASSEMBLY	SUB-MCX7-P-C-HN-RA-CA3	SUB-MCX7-P-C-H-RA-CA3
2	FERRULE	MCX-FER-001-N	MCX-FER-001-F
3	INSULATOR	MCX-INS-001	
4	CAP	MCX-CAP-001-N	MCX-CAP-001-F

MCX7-P-C-XX-RA-CA3

GENDER
-P: PLUG

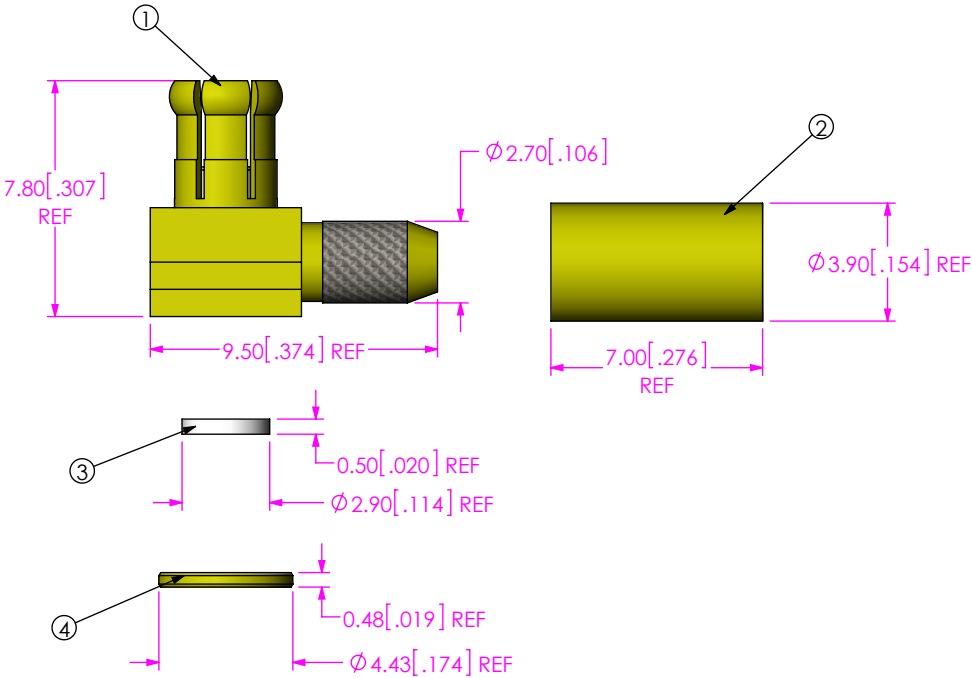
TERMINATION
-CA3: CABLE (RG179)

TYPE
-C: CABLE

ORIENTATION
-RA: RIGHT ANGLE

PLATING SPECIFICATION

-HN:30μ" GOLD CENTER CONTACT,
100μ" NICKEL OUTER CONTACT
-H: 30μ" GOLD CENTER CONTACT,
3μ" GOLD OUTER CONTACT
(SEE TABLE 1)



NOTES:

- NOTE DELETED.
- NOTE DELETED.
- NOTE DELETED.
- NOTE DELETED.
- PRODUCT TO BE BULK PACKAGED PER PACKAGING STANDARD CO-RF-WI-3040-M.
- NOTE DELETED.
- NOTE DELETED.
- NOTE DELETED.

UNLESS OTHERWISE SPECIFIED,
DIMENSIONS ARE IN
MILLIMETERS [INCHES].
TOLERANCES ARE:
DECIMALS ANGLES
.X: ±0.3 [.01] 2°
.XX: ±0.13 [.005]
.XXX: ±0.051 [.0020]

PROPRIETARY NOTE

THIS DOCUMENT CONTAINS CONFIDENTIAL AND
PROPRIETARY INFORMATION AND ALL DESIGN,
MANUFACTURING, REPRODUCTION, USE, PATENT RIGHTS
AND SALES RIGHTS ARE EXPRESSLY RESERVED BY SAMTEC,
INC. THIS DOCUMENT SHALL NOT BE DISCLOSED, IN WHOLE
OR PART, TO ANY UNAUTHORIZED PERSON OR ENTITY NOR
REPRODUCED, TRANSFERRED OR INCORPORATED IN ANY
OTHER PROJECT IN ANY MANNER WITHOUT THE EXPRESS
WRITTEN CONSENT OF SAMTEC, INC.

MATERIAL: DO NOT SCALE DRAWING SHEET SCALE: 4:1
SHELL, FERRULE, CAP: BRASS
CONTACT: BRASS
DIELECTRIC: PTFE

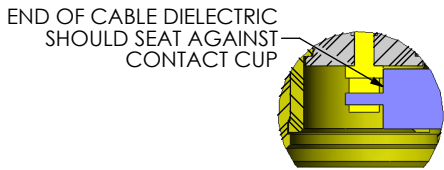
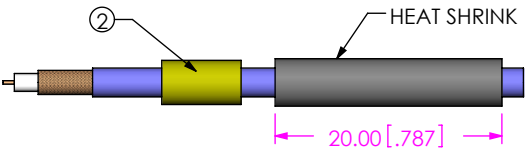
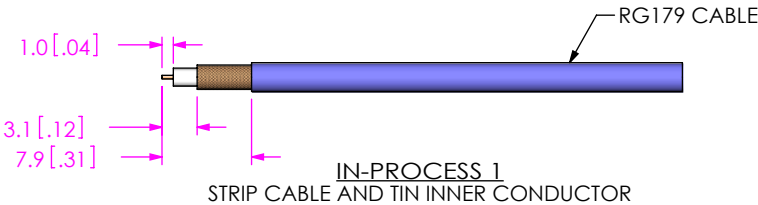
samtec

520 PARK EAST BLVD, NEW ALBANY, IN 47150
PHONE: 812-944-6733 FAX: 812-948-5047
e-Mail: info@SAMTEC.com code: 55322

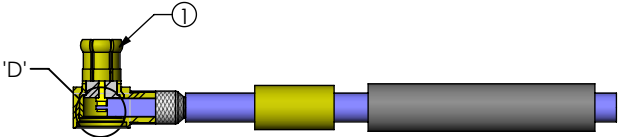
DESCRIPTION:
TRUE 75 OHM, MCX RIGHT ANGLE PLUG, RG179

DWG. NO.
MCX7-P-C-XX-RA-CA3

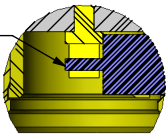
BY: R MUSSER 02/06/2008 SHEET 1 OF 2



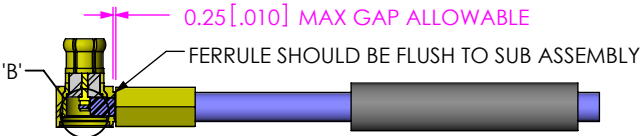
DETAIL 'D'



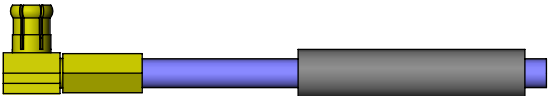
CABLE CENTER CONDUCTOR
SHOULD NOT PROTRUDE
OUTSIDE CONTACT CUP
AFTER FERRULE IS CRIMPED



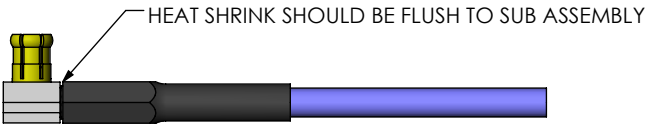
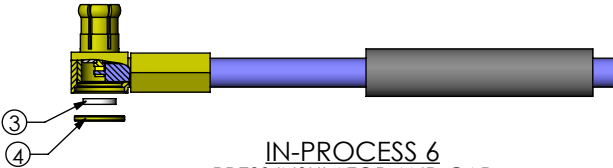
DETAIL 'B'



IN-PROCESS 4
CRIMP FERRULE
(USE RF CRIMP HAND TOOL #CAT-RF-FER-01, AND .128" DIE SIZE)



IN-PROCESS 5
SOLDER SIGNAL SOCKET



IN-PROCESS 7
ACTIVATE HEAT SHRINK

PROPRIETARY NOTE
THIS DOCUMENT CONTAINS CONFIDENTIAL AND PROPRIETARY INFORMATION AND ALL DESIGN, MANUFACTURING, REPRODUCTION, USE, PATENT RIGHTS AND SALES RIGHTS ARE EXPRESSLY RESERVED BY SAMTEC, INC. THIS DOCUMENT SHALL NOT BE DISCLOSED, IN WHOLE OR PART, TO ANY UNAUTHORIZED PERSON OR ENTITY NOR REPRODUCED, TRANSFERRED OR INCORPORATED IN ANY OTHER PROJECT IN ANY MANNER WITHOUT THE EXPRESS WRITTEN CONSENT OF SAMTEC, INC.

DO NOT SCALE DRAWING

SHEET SCALE: 1.5:1



520 PARK EAST BLVD, NEW ALBANY, IN 47150
PHONE: 812-944-6733 FAX: 812-948-5047
e-Mail: info@SAMTEC.com code: 55322

DESCRIPTION:
TRUE 75 OHM, MCX RIGHT ANGLE PLUG, RG179

DWG. NO.
MCX7-P-C-XX-RA-CA3

BY: R MUSSER 02/06/2008 SHEET 2 OF 2