

EMC Components

EMC Filters for AC Power Line

Inlet-socket Type

ZUMT, ZUST Series

FEATURES

- The ZUMT and ZUST series are AC inlet sockets with in-line ground inductors in accordance with IEC standards.
- Although highly compact, these filters provide excellent attenuation of the common mode noise component.
- These sockets are solid molded and offer superior reliability. They are capable of withstanding humidity, vibration, and shock, making them ideal for application in harsh environments.
- The ZUST series features a metal case connected to the ground terminal. By conducting noise current directly to the metal frame, this product effectively prevents input/output coupling.

APPLICATIONS

Personal computers, peripheral components (CRT displays, printers, scanners, hard disk drives, etc.), word processors, facsimiles, office automation equipment, electronic games and leisure devices, ECRs, etc.

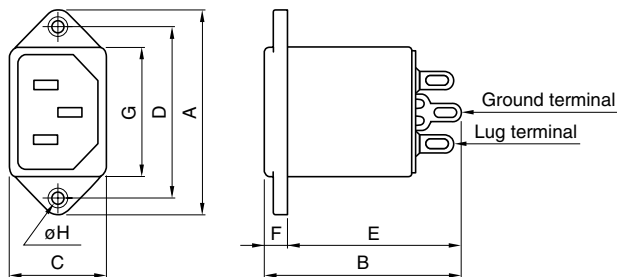
SAFETY STANDARDS

Part No.	Standard and standard No.			
	U.S.A	Canada	Europe*	
	UL	CSA	Produced before July, 2003 VDE	Produced after July, 2003 NEMKO
	UL1283	CSA C22.2 No.8	VDE565 Teil3	EN133200
ZUMT2210-02	E62388	LR76849C	19047-4730-1005	P03200365
ZUMT2210-05	E62388	LR76849C	19047-4730-1005	P03200365
ZUST2210-02	E62388	LR76849C	19047-4730-1005	P03200365
ZUST2210-05	E62388	LR76849C	19047-4730-1005	P03200365

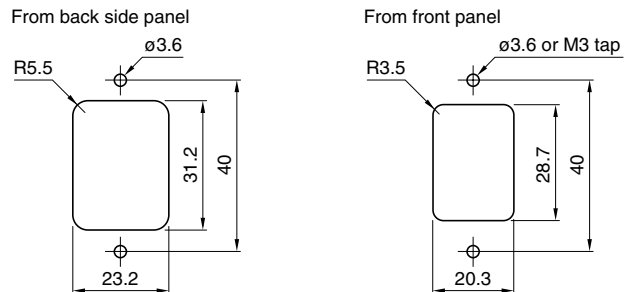
* The authorization standard is different depending on time when products were produced about European standards.

SHAPES AND DIMENSIONS

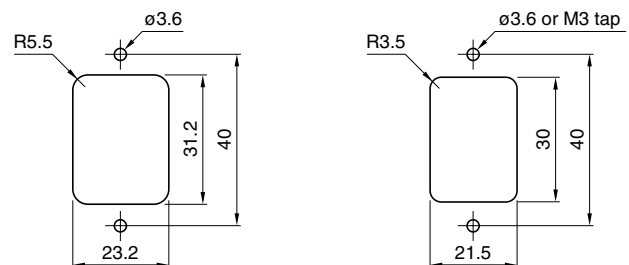
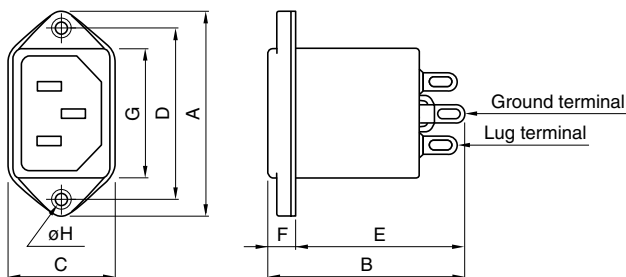
ZUMT



Typical dimensions for installation



ZUST



• Tighten the panel mounting M3 dia. bolt with the torque under $5.88 \times 10^{-1} \text{ N} \cdot \text{m}$.

Part No.	Dimensions in mm							
	A	B	C	D	E	F	G	øH
ZUMT2210-02, -05	48	46	22.5	40	40.8	5.2	30.5	3.3
ZUST2210-02, -05	48	46	25	40	40	6	30.5	3.3

- Case: plastic (ZUMT), metal (ZUST), input terminal: inlet-socket (EN60320), output terminal: lug terminal

EMC Components

EMC Filters for AC Power Line Inlet-socket Type

ZUMT, ZUST Series

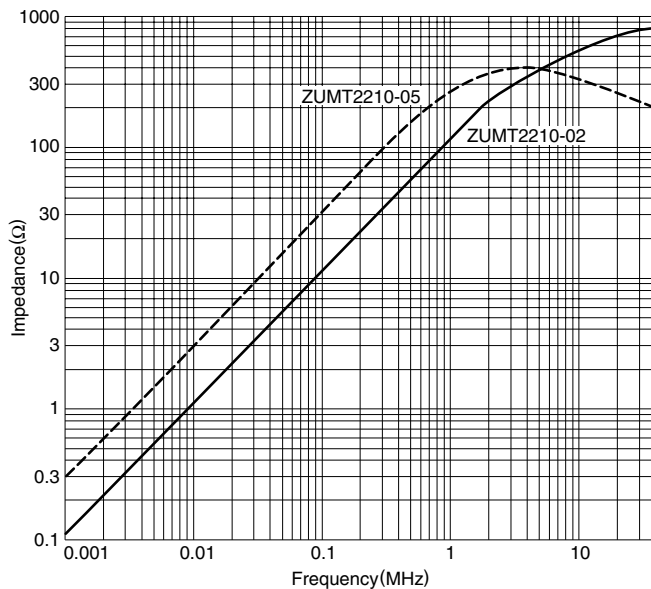
ELECTRICAL CHARACTERISTICS

Part No.	ZUMT2210-02	ZUMT2210-05	ZUST2210-02	ZUST2210-05
Rated voltage Eac(V)	250	250	250	250
Rated current(A)	10	10	10	10
Test voltage Eac(V)[Between terminal and ground terminal]	1500	1500	1500	1500
Insulation resistance(MΩ) [AC: 500V, 1min/between terminal and ground terminal]	100min.	100min.	100min.	100min.
DC resistance(mΩ)	5max.	5max.	5max.	5max.
Operating temperature range(°C) [Including self-temperature rise]	-25 to +85	-25 to +85	-25 to +85	-25 to +85
With derating over(°C)	55	55	55	55
Temperature rise(°C) [Applied rated current at ground terminal]	30max.	30max.	30max.	30max.
Inductance(μH) [at 1kHz]	11+50, -30%	55+50, -30%	11+50, -30%	55+50, -30%
Weight(g)	30	30	43	43

TYPICAL ELECTRICAL CHARACTERISTICS

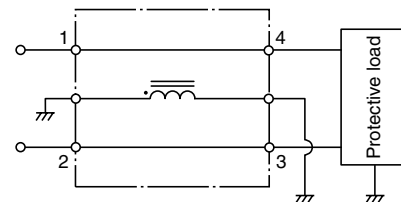
IMPEDANCE vs. FREQUENCY CHARACTERISTICS

(Reference)



CIRCUIT DIAGRAMS

ZUMT



ZUST

