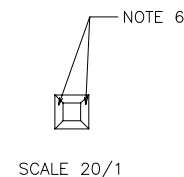
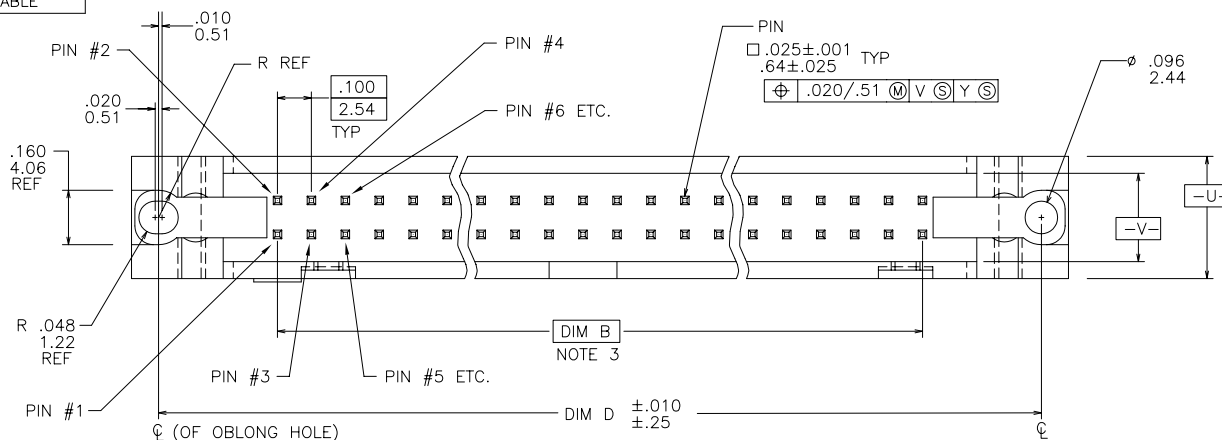
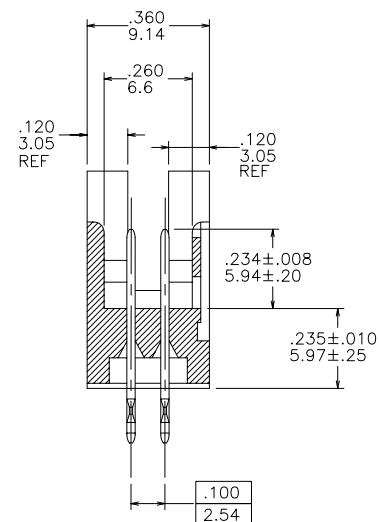
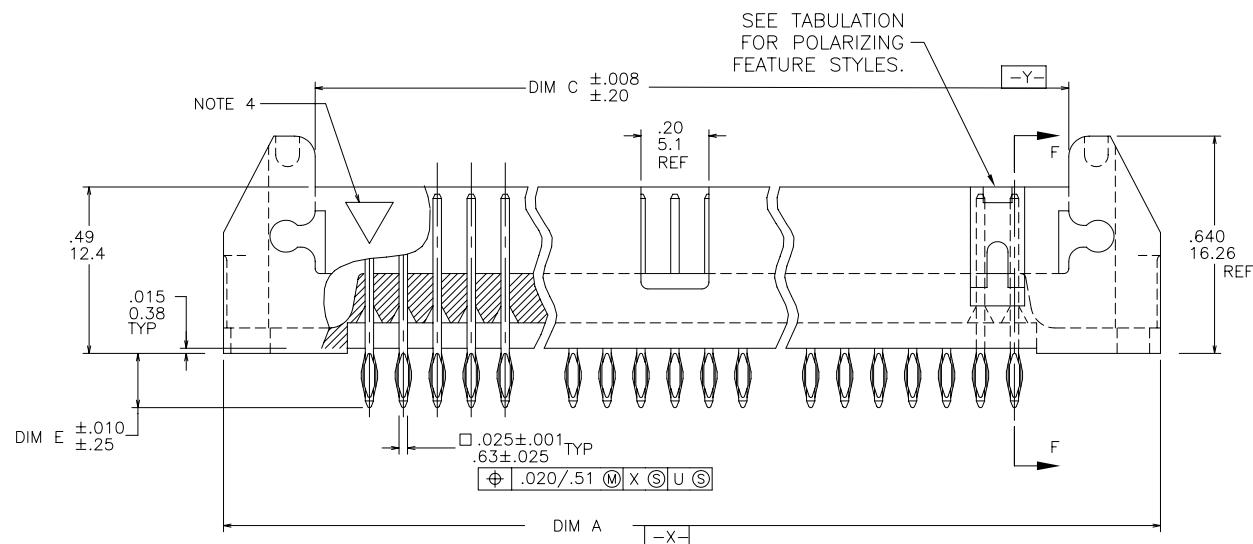




PRODUCT NUMBER
SEE TABLE



SCALE 20/1

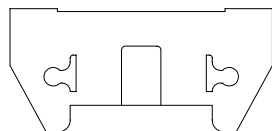


mat'l. code				surface ISO 1302 ✓		tolerance ISO 406 ISO 1101		projection 		product family QUICKIE																																																																																																																																																																																																																																																																																																																																																																																																																																																																																																																																																																																																																																																																																																																																																																																																																																																																																																																																																																																																																																																																																																																																																															
ltr	ecn	no	dr	date		tolerances unless otherwise specified				INCH/MM	title																																																																																																																																																																																																																																																																																																																																																																																																																																																																																																																																																																																																																																																																																																																																																																																																																																																																																																																																																																																																																																																																																																																																																														
AA	V01853	MEM		7/27/00		angles linear	.XX±.01/.3				P.F. HDR. ASSEMBLY																																																																																																																																																																																																																																																																																																																																																																																																																																																																																																																																																																																																																																																																																																																																																																																																																																																																																																																																																																																																																																																																																																																																																														
AB	V02910	MEM		12/05/00			.XXX±.005/.13				SEA HORSE 4 WALL																																																																																																																																																																																																																																																																																																																																																																																																																																																																																																																																																																																																																																																																																																																																																																																																																																																																																																																																																																																																																																																																																																																																																														
AC	V20526	RGD		3/18/02			0'±2"				.XXXX±.0020/.051				scale 1:1																																																																																																																																																																																																																																																																																																																																																																																																																																																																																																																																																																																																																																																																																																																																																																																																																																																																																																																																																																																																																																																																																																																																																										
AD	V21355	GIP		9/05/02	dr	M. CLOUSER	3/01/90					dwg no		sheet 1 of 13				size																																																																																																																																																																																																																																																																																																																																																																																																																																																																																																																																																																																																																																																																																																																																																																																																																																																																																																																																																																																																																																																																																																																																																							
AE	V21485	GIP		9/23/02	enr	M. SMYK	3/01/90					68710		A3																																																																																																																																																																																																																																																																																																																																																																																																																																																																																																																																																																																																																																																																																																																																																																																																																																																																																																																																																																																																																																																																																																																																																											
AF	M05-0204	MHT		11/09/05	chr	M. SMYK	3/01/90																																																																																																																																																																																																																																																																																																																																																																																																																																																																																																																																																																																																																																																																																																																																																																																																																																																																																																																																																																																																																																																																																																																																																																		
AG	M07-0116	AGS		2/24/07	appd	M. SMYK	3/01/90																																																																																																																																																																																																																																																																																																																																																																																																																																																																																																																																																																																																																																																																																																																																																																																																																																																																																																																																																																																																																																																																																																																																																																		
sheet	revision	AG	AG	AG	AG	AG	AG	AG	AG	AG	AG	AG	AG	AG	AG	AG	AG	AG	AG	AG	AG	AG	AG	AG	AG	AG	AG	AG	AG	AG	AG	AG	AG	AG	AG	AG	AG	AG	AG	AG	AG	AG	AG	AG	AG	AG	AG	AG	AG	AG	AG	AG	AG	AG	AG	AG	AG	AG	AG	AG	AG	AG	AG	AG	AG	AG	AG	AG	AG	AG	AG	AG	AG	AG	AG	AG	AG	AG	AG	AG	AG	AG	AG	AG	AG	AG	AG	AG	AG	AG	AG	AG	AG	AG	AG	AG	AG	AG	AG	AG	AG	AG	AG	AG	AG	AG	AG	AG	AG	AG	AG	AG	AG	AG	AG	AG	AG	AG	AG	AG	AG	AG	AG	AG	AG	AG	AG	AG	AG	AG	AG	AG	AG	AG	AG	AG	AG	AG	AG	AG	AG	AG	AG	AG	AG	AG	AG	AG	AG	AG	AG	AG	AG	AG	AG	AG	AG	AG	AG	AG	AG	AG	AG	AG	AG	AG	AG	AG	AG	AG	AG	AG	AG	AG	AG	AG	AG	AG	AG	AG	AG	AG	AG	AG	AG	AG	AG	AG	AG	AG	AG	AG	AG	AG	AG	AG	AG	AG	AG	AG	AG	AG	AG	AG	AG	AG	AG	AG	AG	AG	AG	AG	AG	AG	AG	AG	AG	AG	AG	AG	AG	AG	AG	AG	AG	AG	AG	AG	AG	AG	AG	AG	AG	AG	AG	AG	AG	AG	AG	AG	AG	AG	AG	AG	AG	AG	AG	AG	AG	AG	AG	AG	AG	AG	AG	AG	AG	AG	AG	AG	AG	AG	AG	AG	AG	AG	AG	AG	AG	AG	AG	AG	AG	AG	AG	AG	AG	AG	AG	AG	AG	AG	AG	AG	AG	AG	AG	AG	AG	AG	AG	AG	AG	AG	AG	AG	AG	AG	AG	AG	AG	AG	AG	AG	AG	AG	AG	AG	AG	AG	AG	AG	AG	AG	AG	AG	AG	AG	AG	AG	AG	AG	AG	AG	AG	AG	AG	AG	AG	AG	AG	AG	AG	AG	AG	AG	AG	AG	AG	AG	AG	AG	AG	AG	AG	AG	AG	AG	AG	AG	AG	AG	AG	AG	AG	AG	AG	AG	AG	AG	AG	AG	AG	AG	AG	AG	AG	AG	AG	AG	AG	AG	AG	AG	AG	AG	AG	AG	AG	AG	AG	AG	AG	AG	AG	AG	AG	AG	AG	AG	AG	AG	AG	AG	AG	AG	AG	AG	AG	AG	AG	AG	AG	AG	AG	AG	AG	AG	AG	AG	AG	AG	AG	AG	AG	AG	AG	AG	AG	AG	AG	AG	AG	AG	AG	AG	AG	AG	AG	AG	AG	AG	AG	AG	AG	AG	AG	AG	AG	AG	AG	AG	AG	AG	AG	AG	AG	AG	AG	AG	AG	AG	AG	AG	AG	AG	AG	AG	AG	AG	AG	AG	AG	AG	AG	AG	AG	AG	AG	AG	AG	AG	AG	AG	AG	AG	AG	AG	AG	AG	AG	AG	AG	AG	AG	AG	AG	AG	AG	AG	AG	AG	AG	AG	AG	AG	AG	AG	AG	AG	AG	AG	AG	AG	AG	AG	AG	AG	AG	AG	AG	AG	AG	AG	AG	AG	AG	AG	AG	AG	AG	AG	AG	AG	AG	AG	AG	AG	AG	AG	AG	AG	AG	AG	AG	AG	AG	AG	AG	AG	AG	AG	AG	AG	AG	AG	AG	AG	AG	AG	AG	AG	AG	AG	AG	AG	AG	AG	AG	AG	AG	AG	AG	AG	AG	AG	AG	AG	AG	AG	AG	AG	AG	AG	AG	AG	AG	AG	AG	AG	AG	AG	AG	AG	AG	AG	AG	AG	AG	AG	AG	AG	AG	AG	AG	AG	AG	AG	AG	AG	AG	AG	AG	AG	AG	AG	AG	AG	AG	AG	AG	AG	AG	AG	AG	AG	AG	AG	AG	AG	AG	AG	AG	AG	AG	AG	AG	AG	AG	AG	AG	AG	AG	AG	AG	AG	AG	AG	AG	AG	AG	AG	AG	AG	AG	AG	AG	AG	AG	AG	AG	AG	AG	AG	AG	AG	AG	AG	AG	AG	AG	AG	AG	AG	AG	AG	AG	AG	AG	AG	AG	AG	AG	AG	AG	AG	AG	AG	AG	AG	AG	AG	AG	AG	AG	AG	AG	AG	AG	AG	AG	AG	AG	AG	AG	AG	AG	AG	AG	AG	AG	AG	AG	AG	AG	AG	AG	AG	AG	AG	AG	AG	AG	AG	AG	AG	AG	AG	AG	AG	AG	AG	AG	AG	AG	AG	AG	AG	AG	AG	AG	AG	AG	AG	AG	AG	AG	AG	AG	AG	AG	AG	AG	AG	AG	AG	AG	AG	AG	AG	AG	AG	AG	AG	AG	AG	AG	AG	AG	AG	AG	AG	AG	AG	AG	AG	AG	AG	AG	AG	AG	AG	AG	AG	AG	AG	AG	AG	AG	AG	AG	AG	AG	AG	AG	AG	AG	AG	AG	AG	AG	AG	AG	AG	AG	AG	AG	AG	AG	AG	AG	AG	AG	AG	AG	AG	AG	AG	AG	AG	AG	AG	AG	AG	AG	AG	AG	AG	AG	AG	AG	AG	AG	AG	AG	AG	AG	AG	AG	AG	AG	AG	AG	AG	AG	AG	AG	AG	AG	AG	AG	AG	AG	AG	AG	AG	AG	AG	AG	AG	AG	AG	AG	AG	AG	AG	AG	AG	AG	AG	AG	AG	AG	AG	AG	AG	AG	AG	AG	AG	AG	AG	AG	AG	AG	AG	AG	AG	AG	AG	AG	AG	AG	AG	AG	AG	AG	AG	AG	AG	AG	AG	AG	AG	AG	AG	AG	AG	AG	AG	AG	AG	AG	AG	AG	AG	AG	AG	AG	AG	AG	AG	AG	AG	AG	AG	AG	AG	AG	AG	AG	AG	AG	AG	AG	AG	AG	AG	AG	AG	AG	AG	AG	AG	AG	AG	AG	AG	AG	AG	AG	AG	AG	AG	AG	AG	AG	AG	AG	AG	AG	AG	AG	AG	AG	AG	AG	AG	AG	AG	AG	AG	AG	AG	AG	AG	AG	AG	AG	AG	AG	AG	AG	AG	AG	AG	AG	AG	AG	AG	AG	AG	AG	AG	AG	AG	AG	AG	AG	AG	AG	AG	AG	AG	AG	AG	AG	AG	AG	AG	AG	AG	AG	AG	AG	AG	AG	AG	AG	AG	AG	AG	AG	AG	AG	AG	AG	AG	AG	AG	AG	AG	AG	AG	AG	AG	AG	AG	AG	AG	AG	AG	AG	AG	AG	AG	AG	AG	AG	AG	AG	AG	AG	AG	AG	AG	AG	AG	AG	AG	AG	AG	AG	AG	AG	AG	AG	AG	AG	AG	AG	AG	AG	AG	AG	AG	AG	AG	AG	AG	AG	AG	AG	AG	AG	AG	AG	AG	AG	AG	AG	AG	AG	AG	AG	AG	AG	AG	AG	AG	AG	AG	AG	AG	AG	AG	AG	AG	AG	AG	AG	AG	AG	AG	AG	AG	AG	AG	AG	AG	AG	AG	AG	AG	AG	AG	AG	AG	AG	AG	AG	AG	AG	AG	AG	AG	AG	AG	AG

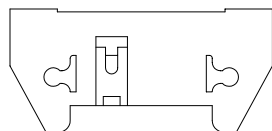
	PLATING	NOTE 6
1	30u"/.76u Au OVER 50u "/1.27u Ni	NOTE 14
2	30u"/.76u GXT/GOLD FLASH	NOTE 14
4	30u"/.76u GXT DUPLEX	
4LF	30u"/.76u GXT & 100u"/2.54u Sn DUPLEX	
5	30u"/.76u GOLD DUPLEX	
5LF	30u"/.76u GOLD & 100u"/2.54u Sn DUPLEX	

NOTES:

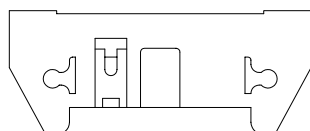
1. BODY MATERIAL; 30% GLASS FILLED POLYESTER
FLAME RETARDANT PER UL 94-V0 COLOR-BLUE.
-1XX TO -6XX BLUE PBT
-7XX TO -9XX GREY PBT
2. UNLESS OTHERWISE SPECIFIED, 1° MAX DRAFT
PERMISSIBLE ON ALL SURFACES.
- ③ DIM B BASIC DIM SHALL BE LOCATED SYMMETRICAL
TO DATUM -Y-.
4. TRIANGLE, LOGO, & PART NO. AND THEIR LOCATIONS OPTIONAL.
- ⑤ PIN MATERIAL; 3/4 HD. PHOSPHOR BRONZE ALLOY
UNS-C51000.
- ⑥ TWO NON-CRITICAL SIDES OF TIPS NOT PLATED.
TYP BOTH ENDS.
7. RECOMMENDED MOUNTING SCREW - #2-56 FILLISTER
HEAD MACHINE SCREW .25/6.35 LONG FOR
.063/1.58 & .094/2.38 BOARDS, .313/7.93 LONG
FOR .125/3.18 BOARDS.
8. 3 LBS/1.36 KG PIN RETENTION IN BOTH DIRECTIONS.
9. LOW PROFILE LATCHES TO BE USED WITH FEMALE
CONNECTOR WITHOUT STRAIN RELIEF STANDARD
LATCHES TO BE USED WITH FEMALE CONNECTORS
WITH STRAIN RELIEF.
- ⑩ ADD AN "A" AFTER THE 8 DIGIT PART NUMBER FOR
CUSTOMER SPECIAL.
11. RECOMMENDED PLATED-THRU-HOLE DIMENSIONS ARE:
DRILLED HOLE: .0453/1.151±.0010/.025 DIA
COPPER PLATING THICKNESS .001/.025 TO .003/.076
SOLDER PLATING THICKNESS: .0003/.076 TO .0007/.0178
OVERALL HOLE SIZE: .040/1.016±.003/.076 DIA
- ⑫ ADD "LF" SUFFIX AT THE END OF PART NUMBER FOR LEAD FREE OPTION.
- ⑬ THESE PRODUCT MEETS EUROPEAN UNION DIRECTIVES AND OTHER
COUNTRY REGULATION AS DESCRIBED IN GS-22-008.
- ⑭ PLATING OPTIONS:
MAY BE EITHER GOLD OR GXT PLATED AT MANUFACTURER'S OPTION.
15. THE PRODUCT IS NOT INTENDED TO BE EXPOSED TO A MANUFACTURING SOLDER
PROCESS.



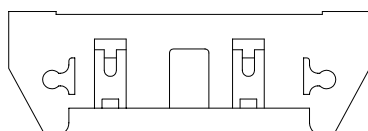
2x5
STYLE A



2x5
STYLE B



2x7
STYLE C



2 X 8 & LARGER
STYLE D

mat'l. code				surface	tolerance	projection	product family			
				ISO 1302 ✓	ISO 406 ISO 1101		QUICKIE			
ltr	ecn	no	dr	date	tolerances unless otherwise specified		title			
AG					angles	.XX±.01/.3	INCH/MM			
					linear	.XXX±.005/.13				
					0°±2'	.XXXX±.0020/.051	scale 1:1			
					dr	M. CLOUSER 3/01/90				
					enr	M. SMYK 3/01/90				
					chr	M. SMYK 3/01/90				
					appd	M. SMYK 3/01/90				
sheet	revision						dwg no			
index	sheet						68710			
							sheet2 of13size			
							A3			
							type Product Customer Drawing			



FCIconnect.com

Copyright FCI

PRODUCT NUMBER	SIZE	STYLE	LATCH	DIM A	DIM B	DIM C	DIM D	DIM E	PIN PLATING	LEAD FREE PIN PLATING	LEAD FREE OPTION
68710-001	2 X 5	A	NONE	1.26/32.00	.400/10.16	.720/18.28	1.100/27.94	.160/4.06	1	1	NOTE 12
-002								.160/4.06	2	2	
-003								.610/15.49	1	1	
-004								.610/15.49	2	2	
-005								.733/18.62	1	1	
-006			NONE					.733/18.62	2	2	
-007			STD.					.160/4.06	1	1	
-008								.160/4.06	2	2	
-009								.610/15.49	1	1	
-010								.610/15.49	2	2	
-011								.733/18.62	1	1	
-012			STD.					.733/18.62	2	2	
-013			LOW PROFILE					.160/4.06	1	1	
-014								.160/4.06	2	2	
-015								.610/15.49	1	1	
-016								.610/15.49	2	2	
-017								.733/18.62	1	1	
-018		A	LOW PROFILE					.733/18.62	2	2	
-019		B	NONE					.160/4.06	1	1	
-020								.160/4.06	2	2	
-021								.610/15.49	1	1	
-022								.610/15.49	2	2	
-023								.733/18.62	1	1	
-024			NONE					.733/18.62	2	2	
-025			STD.					.160/4.06	1	1	
-026								.160/4.06	2	2	
-027								.610/15.49	1	1	
-028								.610/15.49	2	2	
-029								.733/18.62	1	1	
-030			STD.					.733/18.62	2	2	
-031			LOW PROFILE					.160/4.06	1	1	
-032								.160/4.06	2	2	
-033								.610/15.49	1	1	
-034								.610/15.49	2	2	
-035								.733/18.62	1	1	
68710-036	2 X 5	B	LOW PROFILE	1.26/32.00	.400/10.16	.720/18.28	1.100/27.94	.733/18.62	2	2	NOTE 12

mat'l. code				surface ISO 1302 ✓		tolerance ISO 406 ISO 1101		projection 		product family QUICKIE			
ltr ecn no dr date				tolerances unless otherwise specified						title			
AG				angles		linear .XX±.01/.3		INCH/MM		P.F. HDR. ASSEMBLY SEA HORSE 4 WALL			
				0°±2'		linear .XXX±.005/.13		scale 1:1		dwg no sheet3 of13size			
				dr M. CLOUSER		3/01/90				68710 A3			
				enr M. SMYK		3/01/90				type Product Customer Drawing			
				chr M. SMYK		3/01/90							
				appd M. SMYK		3/01/90							
sheet index		revision sheet											



FCIconnect.com

Copyright FCI

PRODUCT NUMBER	SIZE	STYLE	LATCH	DIM A	DIM B	DIM C	DIM D	DIM E	PIN PLATING SEE SHT. 2	LEAD FREE PIN PLATING	LEAD FREE OPTION
68710-037	2 X 7	C	NONE	1.46/37.08	.600/15.24	.920/23.37	1.300/33.02	.160/4.06	1	1	NOTE 12
-038								.160/4.06	2	2	
-039								.610/15.49	1	1	
-040								.610/15.49	2	2	
-041								.733/18.62	1	1	
-042			NONE					.733/18.62	2	2	
-043			STD.					.160/4.06	1	1	
-044								.160/4.06	2	2	
-045								.610/15.49	1	1	
-046								.610/15.49	2	2	
-047								.733/18.62	1	1	
-048			STD.					.733/18.62	2	2	
-049			LOW PROFILE					.160/4.06	1	1	
-050								.160/4.06	2	2	
-051								.610/15.49	1	1	
-052								.610/15.49	2	2	
-053								.733/18.62	1	1	
-054	2 X 7	C	LOW PROFILE	1.46/37.08	.600/15.24	.920/23.37	1.300/33.02	.733/18.62	2	2	
-055	2 X 8	D	NONE	1.56/39.62	.700/17.78	1.020/25.91	1.400/35.56	.160/4.06	1	1	
-056								.160/4.06	2	2	
-057								.610/15.49	1	1	
-058								.610/15.49	2	2	
-059								.733/18.62	1	1	
-060			NONE					.733/18.62	2	2	
-061			STD.					.160/4.06	1	1	
-062								.160/4.06	2	2	
-063								.610/15.49	1	1	
-064								.610/15.49	2	2	
-065								.733/18.62	1	1	
-066			STD.					.733/18.62	2	2	
-067			LOW PROFILE					.160/4.06	1	1	
-068								.160/4.06	2	2	
-069								.610/15.49	1	1	
-070								.610/15.49	2	2	
-071								.733/18.62	1	1	
68710-072	2 X 8	D	LOW PROFILE	1.56/39.62	.700/17.78	1.020/25.91	1.400/35.56	.733/18.62	2	2	NOTE 12

mat'l. code				surface ISO 1302 <input checked="" type="checkbox"/> ISO 406 ISO 1101		tolerance ISO 406 ISO 1101		projection 		product family QUICKIE	
ltr	ecn	no	dr	date	tolerances unless otherwise specified		linear .XX±.01/.3		INCH/MM		
AG					angles	linear .XXX±.005/.13	scale 1:1		title P.F. HDR. ASSEMBLY SEA HORSE 4 WALL		
					0°±2°	.XXXX±.0020/.051			dwg no 68710		
					dr	M. CLOUSER	3/01/90			sheet 4 of 13 size A3	
					enr	M. SMYK	3/01/90				
					chr	M. SMYK	3/01/90				
					appd	M. SMYK	3/01/90				
sheet index	revision sheet										

1												2												3												4												5												6											
PRODUCT NUMBER		SIZE		STYLE		LATCH		DIM A		DIM B		DIM C		DIM D		DIM E		PIN PLATING		LEAD FREE PIN PLATING		LEAD FREE OPTION																																																	
68710-073		2 X 10		D		NONE		1.76/44.70		.900/22.86		1.220/30.99		1.600/40.64		.160/4.06		1		1		NOTE 12																																																	
-074																.160/4.06		2		2																																																			
-075																.610/15.49		1		1																																																			
-076																.610/15.49		2		2																																																			
-077																.733/18.62		1		1																																																			
-078						NONE										.733/18.62		2		2																																																			
-079						STD.										.160/4.06		1		1																																																			
-080																.160/4.06		2		2																																																			
-081																.610/15.49		1		1																																																			
-082																.610/15.49		2		2																																																			
-083																.733/18.62		1		1																																																			
-084						STD.										.733/18.62		2		2																																																			
-085						LOW PROFILE										.160/4.06		1		1																																																			
-086																.160/4.06		2		2																																																			
-087																.610/15.49		1		1																																																			
-088																.610/15.49		2		2																																																			
-089																.733/18.62		1		1																																																			
-090		2 X 10		D		LOW PROFILE		1.76/44.70		.900/22.86		1.220/30.99		1.600/40.64		.733/18.62		2		2																																																			
-091		2 X 12		D		NONE		1.96/49.78		1.100/27.94		1.420/36.07		1.800/45.72		.160/4.06		1		1																																																			
-092																.160/4.06		2		2																																																			
-093																.610/15.49		1		1																																																			
-094																.610/15.49		2		2																																																			
-095																.733/18.62		1		1																																																			
-096						NONE										.733/18.62		2		2																																																			
-097						STD.										.160/4.06		1		1																																																			
-098																.160/4.06		2		2																																																			
-099																.610/15.49		1		1																																																			
-100																.610/15.49		2		2																																																			
-101																.733/18.62		1		1																																																			
-102						STD.										.733/18.62		2		2																																																			
-103						LOW PROFILE										.160/4.06		1		1																																																			
-104																.160/4.06		2		2																																																			
-105																.610/15.49		1		1																																																			
-106																.610/15.49		2		2																																																			
-107																.733/18.62		1		1																																																			
68710-108		2 X 12		D		LOW PROFILE		1.96/49.78		1.100/27.94		1.420/36.07		1.800/45.72		.733/18.62		2		2		NOTE 12																																																	

mat'l. code

ltr

ecn no

dr

date

surface

ISO 1302

✓

tolerance

ISO 406

ISO 1101

tolerances unless otherwise specified

linear

linear

linear

linear

linear

linear

linear

linear

linear

linear

linear

linear

linear

linear

linear

linear

linear

linear

linear

linear

linear

linear

linear

linear

linear

linear

linear

linear

linear

linear

linear

linear

linear

linear

linear

linear

linear

linear

linear

linear

linear

linear

linear

linear

linear

linear

linear

linear

linear

linear

linear

linear

linear

linear

linear

linear

linear

linear

linear

linear

linear

linear

linear

linear

linear

linear

linear

linear

linear

linear

linear

linear

linear

linear

linear

linear

linear

linear

linear

linear

linear

linear

linear

linear

linear

linear

linear

linear

linear

linear

linear

linear

linear

linear

linear

linear

linear

linear

linear

linear

linear

linear

linear

linear

linear

linear

linear

linear

linear

linear

linear

linear

linear

linear

linear

linear

linear

linear

linear

linear

linear

linear

linear

linear

linear

linear

linear

linear

linear

linear

linear

linear

linear

linear

linear

linear

linear

linear

linear

linear

linear

linear

linear

linear

linear

linear

linear

linear

linear

linear

linear

linear

linear

linear

linear

linear

linear

linear

linear

linear

linear

linear

linear

linear

linear

linear

linear

linear

linear

linear

linear

linear

linear

linear

linear

linear

linear

linear

linear

linear

linear

linear

linear

linear

linear

linear

linear

linear

linear

linear

linear

linear

linear

linear

linear

linear

linear

linear

linear

linear

linear

linear

linear

linear

linear

linear

linear

linear

linear

linear

linear

linear

linear

linear

linear

linear

linear

linear

linear

linear

linear

linear

linear

linear

linear

linear

linear

linear

linear

linear

linear

linear

linear

linear

linear

linear

linear

linear

linear

linear

linear

linear

linear

linear

linear

linear

linear

linear

linear

linear

linear

linear

linear

linear

linear

linear

linear

linear

linear

linear

linear

linear

linear

linear

linear

linear

linear

linear

linear

linear

linear

linear

linear

linear

linear

linear

linear

linear

linear

linear

linear

linear

linear

linear

linear

linear

linear

linear

linear

linear

linear

linear

linear

linear

linear

linear

linear

linear

linear

linear

linear

linear

linear

linear

linear

linear

linear

linear

linear

linear

linear

linear

linear

linear

linear

linear

linear

linear

linear

linear

linear

linear

linear

linear

linear

linear

linear

linear

linear

linear

linear

linear

linear

linear

linear

linear

linear

linear

linear

linear

linear

linear

linear

linear

linear

linear

linear

linear

linear

linear

linear

linear

linear

linear

linear

linear

linear

linear

linear

linear

linear

linear

linear

linear

linear

linear

linear

linear



FCIconnect.com

Copyright FCI

D

PRODUCT NUMBER	SIZE	STYLE	LATCH	DIM A	DIM B	DIM C	DIM D	DIM E	PIN PLATING	LEAD FREE PIN PLATING	LEAD FREE OPTION	
68710-109	2 X 13	D	NONE	2.06/52.32	1.200/30.48	1.520/38.61	1.900/48.26	.160/4.06	1	1	NOTE 12	
-110								.160/4.06	2	2		
-111								.610/15.49	1	1		
-112								.610/15.49	2	2		
-113								.733/18.62	1	1		
-114			NONE					.733/18.62	2	2		
-115			STD.					.160/4.06	1	1		
-116								.160/4.06	2	2		
-117								.610/15.49	1	1		
-118								.610/15.49	2	2		
-119								.733/18.62	1	1		
-120			STD.					.733/18.62	2	2		
-121			LOW PROFILE					.160/4.06	1	1		
-122								.160/4.06	2	2		
-123								.610/15.49	1	1		
-124								.610/15.49	2	2		
-125								.733/18.62	1	1		
-126	2 X 13	D	LOW PROFILE	2.06/52.32	1.200/30.48	1.520/38.61	1.900/48.26	.733/18.62	2	2		
-127	2 X 15	D	NONE	2.26/57.40	1.400/35.56	1.720/43.69	2.100/53.34	.160/4.06	1	1		
-128								.160/4.06	2	2		
-129								.610/15.49	1	1		
-130								.610/15.49	2	2		
-131								.733/18.62	1	1	NOTE 12	
-132			NONE					.733/18.62	2	2		
-133			STD.					.160/4.06	1	1		
-134								.160/4.06	2	2		
-135								.610/15.49	1	1		
-136								.610/15.49	2	2		
-137								.733/18.62	1	1		
-138			STD.					.733/18.62	2	2		
-139			LOW PROFILE					.160/4.06	1	1		
-140								.160/4.06	2	2		
-141								.610/15.49	1	1		
-142								.610/15.49	2	2		
-143								.733/18.62	1	1		
68710-144	2 X 15	D	LOW PROFILE	2.26/57.40	1.400/35.56	1.720/43.69	2.100/53.34	.733/18.62	2	2	NOTE 12	

mat'l. code				surface ISO 1302 <input checked="" type="checkbox"/>		tolerance ISO 406 ISO 1101		projection 		product family QUICKIE	
ltr				ecn no		dr		date		title	
AG										P.F. HDR. ASSEMBLY SEA HORSE 4 WALL	
				angles		linear		.XX±.01/.3 linear .XXX±.005/.13		INCH/MM	
				0°±2'				.XXXX±.0020/.051		scale 1:1	
				dr		M. CLOUSER		3/01/90		dwg no	
				enr		M. SMYK		3/01/90		sheet 6 of 13	
				chr		M. SMYK		3/01/90		size A3	
				appd		M. SMYK		3/01/90		type Product Customer Drawing	
sheet index		revision sheet									



FCIconnect.com

Copyright FCI

PRODUCT NUMBER	SIZE	STYLE	LATCH	DIM A	DIM B	DIM C	DIM D	DIM E	PIN PLATING	LEAD FREE PIN PLATING	LEAD FREE OPTION
68710-145	2 X 17	D	NONE	2.46/62.48	1.600/40.64	1.920/48.79	2.300/58.42	.160/4.06	1	1	NOTE 12
-146								.160/4.06	2	2	
-147								.610/15.49	1	1	
-148								.610/15.49	2	2	
-149								.733/18.62	1	1	
-150			NONE					.733/18.62	2	2	
-151			STD.					.160/4.06	1	1	
-152								.160/4.06	2	2	
-153								.610/15.49	1	1	
-154								.610/15.49	2	2	
-155								.733/18.62	1	1	
-156			STD.					.733/18.62	2	2	
-157			LOW PROFILE					.160/4.06	1	1	
-158								.160/4.06	2	2	
-159								.610/15.49	1	1	
-160								.610/15.49	2	2	
-161								.733/18.62	1	1	
-162	2 X 17	D	LOW PROFILE	2.46/62.48	1.600/40.64	1.920/48.79	2.300/58.42	.733/18.62	2	2	
-163	2 X 20	D	NONE	2.76/70.10	1.900/48.26	2.220/56.39	2.600/66.04	.160/4.06	1	1	
-164								.160/4.06	2	2	
-165								.610/15.49	1	1	
-166								.610/15.49	2	2	
-167								.733/18.62	1	1	
-168			NONE					.733/18.62	2	2	
-169			STD.					.160/4.06	1	1	
-170								.160/4.06	2	2	
-171								.610/15.49	1	1	
-172								.610/15.49	2	2	
-173								.733/18.62	1	1	
-174			STD.					.733/18.62	2	2	
-175			LOW PROFILE					.160/4.06	1	1	
-176								.160/4.06	2	2	
-177								.610/15.49	1	1	
-178								.610/15.49	2	2	
-179								.733/18.62	1	1	
68710-180	2 X 20	D	LOW PROFILE	2.76/70.10	1.900/48.26	2.220/56.39	2.600/66.04	.733/18.62	2	2	NOTE 12

mat'l. code				surface ISO 1302 ✓		tolerance ISO 406 ISO 1101		projection 		product family QUICKIE			
ltr				ecn no		dr		date		title			
AG										P.F. HDR. ASSEMBLY SEA HORSE 4 WALL			
				angles		linear		.XX±.01/.3		INCH/MM			
				0°±2'				.XXX±.005/.13		scale 1:1			
				dr		M. CLOUSER		3/01/90		dwg no			
				enr		M. SMYK		3/01/90		sheet 7 of 13			
				chr		M. SMYK		3/01/90		size A3			
				appd		M. SMYK		3/01/90		type Product Customer Drawing			
sheet index		revision sheet											



FCIconnect.com

Copyright FCI

PRODUCT NUMBER	SIZE	STYLE	LATCH	DIM A	DIM B	DIM C	DIM D	DIM E	PIN PLATING	LEAD FREE PIN PLATING	LEAD FREE OPTION
68710-181	2 X 22	D	NONE	2.96/75.18	2.100/53.34	2.420/61.47	2.800/71.12	.160/4.06	1	1	NOTE 12
-182								.160/4.06	2	2	
-183								.610/15.49	1	1	
-184								.610/15.49	2	2	
-185								.733/18.62	1	1	
-186			NONE					.733/18.62	2	2	
-187			STD.					.160/4.06	1	1	
-188								.160/4.06	2	2	
-189								.610/15.49	1	1	
-190								.610/15.49	2	2	
-191								.733/18.62	1	1	
-192			STD.					.733/18.62	2	2	
-193			LOW PROFILE					.160/4.06	1	1	
-194								.160/4.06	2	2	
-195								.610/15.49	1	1	
-196								.610/15.49	2	2	
-197								.733/18.62	1	1	
-198	2 X 22	D	LOW PROFILE	2.96/75.18	2.100/53.34	2.420/61.47	2.800/71.12	.733/18.62	2	2	
-199	2 X 25	D	NONE	3.26/82.80	2.400/60.96	2.720/69.09	3.100/78.74	.160/4.06	1	1	
-200								.160/4.06	2	2	
-201								.610/15.49	1	1	
-202								.610/15.49	2	2	
-203								.733/18.62	1	1	
-204			NONE					.733/18.62	2	2	
-205			STD.					.160/4.06	1	1	
-206								.160/4.06	2	2	
-207								.610/15.49	1	1	
-208								.610/15.49	2	2	
-209								.733/18.62	1	1	
-210			STD.					.733/18.62	2	2	
-211			LOW PROFILE					.160/4.06	1	1	
-212								.160/4.06	2	2	
-213								.610/15.49	1	1	
-214								.610/15.49	2	2	
-215								.733/18.62	1	1	
68710-216	2 X 25	D	LOW PROFILE	3.26/82.80	2.400/60.96	2.720/69.09	3.100/78.74	.733/18.62	2	2	NOTE 12

mat'l. code				surface ISO 1302 ✓		tolerance ISO 406 ISO 1101		projection 		product family QUICKIE	
ltr				ecn		no		dr		date	
AG											
				angles		linear		.XX±.01/.3		INCH/MM	
				0°±2'				.XXX±.005/.13			
								.XXXX±.0020/.051		scale 1:1	
				dr		M. CLOUSER		3/01/90		sheet8 of13size	
				enr		M. SMYK		3/01/90		A3	
				chr		M. SMYK		3/01/90		type Product Customer Drawing	
				appd		M. SMYK		3/01/90			
sheet index		revision sheet									



FCIconnect.com

Copyright FCI

PRODUCT NUMBER	SIZE	STYLE	LATCH	DIM A	DIM B	DIM C	DIM D	DIM E	PIN PLATING	LEAD FREE PIN PLATING	LEAD FREE OPTION
68710-217	2 X 30	D	NONE	3.76/95.50	2.900/73.66	3.220/81.79	3.600/91.44	.160/4.06	1	1	NOTE 12
-218								.160/4.06	2	2	
-219								.610/15.49	1	1	
-220								.610/15.49	2	2	
-221								.733/18.62	1	1	
-222			NONE					.733/18.62	2	2	
-223			STD.					.160/4.06	1	1	
-224								.160/4.06	2	2	
-225								.610/15.49	1	1	
-226								.610/15.49	2	2	
-227								.733/18.62	1	1	
-228			STD.					.733/18.62	2	2	
-229			LOW PROFILE					.160/4.06	1	1	
-230								.160/4.06	2	2	
-231								.610/15.49	1	1	
-232								.610/15.49	2	2	
-233								.733/18.62	1	1	
-234	2 X 30	D	LOW PROFILE	3.76/95.50	2.900/73.66	3.220/81.79	3.600/91.44	.733/18.62	2	2	
-235	2 X 5	A	STD.	1.26/32.00	.400/10.16	.720/18.28	1.100/27.94	.250/6.35	2	2	
-236	2 X 8	D		1.56/39.62	.700/17.78	1.020/25.91	1.400/35.56				
-237	2 X 10			1.76/44.70	.900/22.86	1.220/30.99	1.600/40.64				
-238	2 X 13			2.06/52.34	1.200/30.48	1.520/38.61	1.900/48.26				
-239	2 X 17			2.46/62.48	1.600/40.64	1.920/48.79	2.300/58.42				
-240	2 X 20			2.76/70.10	1.900/48.26	2.220/56.39	2.600/66.04				
-241	2 X 25			3.26/82.80	2.400/60.96	2.720/69.09	3.100/78.74				
-242	2 X 30	D	STD.	3.76/95.50	2.900/73.66	3.220/81.79	3.600/91.44				
-243	2 X 15	D	STD.	2.26/57.40	1.400/35.56	1.720/43.69	2.100/53.34				
-244	2 X 5	A	NONE	1.26/32.00	.400/10.16	.720/18.28	1.100/27.94				
-245	2 X 8	D		1.56/39.62	.700/17.78	1.020/25.91	1.400/35.56				
-246	2 X 10			1.76/44.70	.900/22.86	1.220/30.99	1.600/40.64				
-247	2 X 13			2.06/52.34	1.200/30.48	1.520/38.61	1.900/48.26				
-248	2 X 17			2.46/62.48	1.600/40.64	1.920/48.79	2.300/58.42				
-249	2 X 20			2.76/70.10	1.900/48.26	2.220/56.39	2.600/66.04				
-250	2 X 25			3.26/82.80	2.400/60.96	2.720/69.09	3.100/78.74				
68710-251	2 X 30			3.76/95.50	2.900/73.66	3.220/81.79	3.600/91.44	.250/6.35	2	2	NOTE 12

NOTE 10
NOTE 10
NOTE 10
NOTE 10
NOTE 10
NOTE 10
NOTE 10
NOTE 10

mat'l. code				surface ISO 1302 ✓ ISO 406 ISO 1101		tolerance tolerances unless otherwise specified		projection INCH/MM		product family QUICKIE			
ltr ecn no dr date				angles linear .XX±.01/.3		linear .XXX±.005/.13		scale 1:1		title P.F. HDR. ASSEMBLY SEA HORSE 4 WALL			
AG				0°±2'		.XXXX±.0020/.051				dwg no sheet9 of13size 68710 A3			
				dr M. CLOUSER 3/01/90		engr M. SMYK 3/01/90		FCI		type Product Customer Drawing			
				chr M. SMYK 3/01/90		appd M. SMYK 3/01/90							
sheet index		revision sheet											

form: A3

PRODUCT NUMBER	SIZE	STYLE	LATCH	DIM A	DIM B	DIM C	DIM D	DIM E	PIN PLATING	LEAD FREE PIN PLATING	POLARIZED MISSING PIN	LEAD FREE OPTION
68710-252	2 x 15	D	NONE	2.26/57.40	1.400/35.56	1.720/43.69	2.100/53.34	.250/6.35	2	2		NOTE 12
68710-253	2 x 20	D	STD.	2.76/70.10	1.900/48.26	2.220/56.39	2.600/66.04	.160/4.06	2	2	PIN #20	NOTE 12
68710-309	2 x 5	B	STD.	1.26/32.00	.400/10.16	.720/18.28	1.100/27.94	.160/4.06	1	1	PIN #1	NOTE 12
68710-310	2 x 17	D	STD.	2.46/62.48	1.600/40.64	1.920/48.79	2.300/58.42	.160/4.06	1	1	PIN #25	NOTE 12

mat'l. code				surface ISO 1302 <input checked="" type="checkbox"/>		tolerance ISO 406 ISO 1101		projection 		product family QUICKIE			
ltr	ecn	no	dr	date		tolerances unless otherwise specified				title			
AG						angles	linear	.XX±.01/.3	INCH/MM		P.F. HDR. ASSEMBLY SEA HORSE 4 WALL		
						0°±2'		.XXX±.005/.13	scale 1:1				
						dr	M. CLOUSER	3/01/90			dwg no		
						enr	M. SMYK	3/01/90			sheet 10 of 13		
						chr	M. SMYK	3/01/90			size		
						appd	M. SMYK	3/01/90			A3		
sheet index		revision sheet										type Product Customer Drawing	



FCIconnect.com

Copyright FCI

PRODUCT NUMBER	SIZE	STYLE	LATCH	DIM A	DIM B	DIM C	DIM D	DIM E	PIN PLATING	LEAD FREE PIN PLATING	NOTES	PIN REMOVED	LEAD FREE OPTION
68710-400	2 x 5	A	NONE	1.26/32.00	.400/10.16	.720/18.28	1.100/27.94	.250/6.35	4	4LF			NOTE 12
-401	2 x 7	C		1.460/37.08	.600/15.24	.920/23.37	1.300/33.02						
-402	2 x 8	D		1.56/39.62	.700/17.78	1.020/25.91	1.400/35.56						
-403	2 x 10			1.76/44.70	.900/22.86	1.220/30.99	1.600/40.64						
-404	2 x 12			1.960/49.78	1.100/27.94	1.420/36.07	1.800/45.72						
-405	2 x 13			2.06/52.34	1.200/30.48	1.520/38.61	1.900/48.26						
-406	2 x 15			2.26/57.40	1.400/35.56	1.720/43.69	2.100/53.34						
-407	2 x 17			2.46/62.48	1.600/40.64	1.920/48.79	2.300/58.42						
-408	2 x 20			2.76/70.10	1.900/48.26	2.220/56.39	2.600/66.04						
-409	2 x 22			2.960/75.18	2.100/53.34	2.420/61.47	2.800/71.12						
-410	2 x 25			3.26/82.80	2.400/60.96	2.720/69.09	3.100/78.74						
-411	2 x 30	D	NONE	3.76/95.50	2.900/73.66	3.220/81.79	3.600/91.44						
-420	2 x 5	A	STD.	1.26/32.00	.400/10.16	.720/18.28	1.100/27.94				NOTE 10		
-421	2 x 7	C		1.460/37.08	.600/15.24	.920/23.37	1.300/33.02				NOTE 10		
-422	2 x 8	D		1.56/39.62	.700/17.78	1.020/25.91	1.400/35.56				NOTE 10		
-423	2 x 10			1.76/44.70	.900/22.86	1.220/30.99	1.600/40.64				NOTE 10		
-424	2 x 12			1.960/49.78	1.100/27.94	1.420/36.07	1.800/45.72				NOTE 10		
-425	2 x 13			2.06/52.34	1.200/30.48	1.520/38.61	1.900/48.26				NOTE 10		
-426	2 x 15			2.26/57.40	1.400/35.56	1.720/43.69	2.100/53.34				NOTE 10		
-427	2 x 17			2.46/62.48	1.600/40.64	1.920/48.79	2.300/58.42				NOTE 10		
-428	2 x 20			2.76/70.10	1.900/48.26	2.220/56.39	2.600/66.04				NOTE 10		
-429	2 x 22			2.960/75.18	2.100/53.34	2.420/61.47	2.800/71.12				NOTE 10		
-430	2 x 25			3.26/82.80	2.400/60.96	2.720/69.09	3.100/78.74				NOTE 10		
-431	2 x 30	D	STD.	3.76/95.50	2.900/73.66	3.220/81.79	3.600/91.44				NOTE 10		
-440	2 x 5	A	LOW PROFILE	1.26/32.00	.400/10.16	.720/18.28	1.100/27.94						
-441	2 x 7	C		1.460/37.08	.600/15.24	.920/23.37	1.300/33.02						
-442	2 x 8	D		1.56/39.62	.700/17.78	1.020/25.91	1.400/35.56						
-443	2 x 10			1.76/44.70	.900/22.86	1.220/30.99	1.600/40.64						
-444	2 x 12			1.960/49.78	1.100/27.94	1.420/36.07	1.800/45.72						
-445	2 x 13			2.06/52.34	1.200/30.48	1.520/38.61	1.900/48.26						
-446	2 x 15			2.26/57.40	1.400/35.56	1.720/43.69	2.100/53.34						
-447	2 x 17			2.46/62.48	1.600/40.64	1.920/48.79	2.300/58.42						
-448	2 x 20			2.76/70.10	1.900/48.26	2.220/56.39	2.600/66.04						
-449	2 x 22			2.960/75.18	2.100/53.34	2.420/61.47	2.800/71.12						
-450	2 x 25			3.26/82.80	2.400/60.96	2.720/69.09	3.100/78.74						
-451	2 x 30	D	LOW PROFILE	3.76/95.50	2.900/73.66	3.220/81.79	3.600/91.44	.250/6.35	4	4LF			
68710-452	2 x 7	C	STD.	1.460/37.08	.600/15.24	.920/23.37	1.300/33.02	.160/4.06	1		NOTE 10	14	NOTE 12

mat'l. code				surface ISO 1302 ✓		tolerance ISO 406 ISO 1101		projection 		product family QUICKIE					
ltr ecn no dr date				tolerances unless otherwise specified								title			
AG				angles		linear .XX±.01/.3		INCH/MM		P.F. HDR. ASSEMBLY SEA HORSE 4 WALL					
				0°±2'		.XXX±.005/.13		scale 1:1		dwg no sheet11 of13size					
				dr M. CLOUSER		3/01/90				A3					
				enr M. SMYK		3/01/90									
				chr M. SMYK		3/01/90									
				appd M. SMYK		3/01/90									
sheet index		revision sheet													

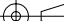


FCIconnect.com

Copyright FCI

PRODUCT NUMBER	SIZE	STYLE	LATCH	DIM A	DIM B	DIM C	DIM D	DIM E	PIN PLATING	LEAD FREE PIN PLATING	POSITION OMITTED	LEAD FREE OPTION
68710-500	2 x 5	A	NONE	1.260/32.00	.400/10.16	.720/18.28	1.100/27.94	.160/4.06	5	5LF		NOTE 12
-501	2 x 7	C		1.460/37.08	.600/15.24	.920/23.37	1.300/33.02					
-502	2 x 8	D		1.560/39.62	.700/17.78	1.020/25.91	1.400/35.56					
-503	2 x 10			1.760/44.70	.900/22.86	1.220/30.99	1.600/40.64					
-504	2 x 12			1.960/49.78	1.100/27.49	1.420/36.07	1.800/45.72					
-505	2 x 13			2.060/52.34	1.200/30.48	1.520/38.61	1.900/48.26					
-506	2 x 15			2.260/57.40	1.400/35.56	1.720/43.69	2.100/53.34					
-507	2 x 17			2.460/62.48	1.600/40.64	1.920/48.79	2.300/58.42					
-508	2 x 20			2.760/70.10	1.900/48.26	2.220/56.39	2.600/66.04					
-509	2 x 22			2.960/75.18	2.100/53.34	2.420/61.47	2.800/71.12					
-510	2 x 25			3.260/82.80	2.400/60.96	2.720/69.09	3.100/78.74					
-511	2 x 30	D	NONE	3.760/95.50	2.900/73.66	3.220/81.79	3.600/91.44					
-520	2 x 5	A	STD.	1.260/32.00	.400/10.16	.720/18.28	1.100/27.94					
-521	2 x 7	C		1.460/37.08	.600/15.24	.920/23.37	1.300/33.02					
-522	2 x 8	D		1.560/39.62	.700/17.78	1.020/25.91	1.400/35.56					
-523	2 x 10			1.760/44.70	.900/22.86	1.220/30.99	1.600/40.64					
-524	2 x 12			1.960/49.78	1.100/27.49	1.420/36.07	1.800/45.72					
-525	2 x 13			2.060/52.34	1.200/30.48	1.520/38.61	1.900/48.26					
-526	2 x 15			2.260/57.40	1.400/35.56	1.720/43.69	2.100/53.34					
-527	2 x 17			2.460/62.48	1.600/40.64	1.920/48.79	2.300/58.42					
-528	2 x 20			2.760/70.10	1.900/48.26	2.220/56.39	2.600/66.04					
-529	2 x 22			2.960/75.18	2.100/53.34	2.420/61.47	2.800/71.12					
-530	2 x 25			3.260/82.80	2.400/60.96	2.720/69.09	3.100/78.74					
-531	2 x 30	D	STD.	3.760/95.50	2.900/73.66	3.220/81.79	3.600/91.44					
-540	2 x 5	A	LOW PROFILE	1.260/32.00	.400/10.16	.720/18.28	1.100/27.94					
-541	2 x 7	C		1.460/37.08	.600/15.24	.920/23.37	1.300/33.02					
-542	2 x 8	D		1.560/39.62	.700/17.78	1.020/25.91	1.400/35.56					
-543	2 x 10			1.760/44.70	.900/22.86	1.220/30.99	1.600/40.64					
-544	2 x 12			1.960/49.78	1.100/27.49	1.420/36.07	1.800/45.72					
-545	2 x 13			2.060/52.34	1.200/30.48	1.520/38.61	1.900/48.26					
-546	2 x 15			2.260/57.40	1.400/35.56	1.720/43.69	2.100/53.34					
-547	2 x 17			2.460/62.48	1.600/40.64	1.920/48.79	2.300/58.42					
-548	2 x 20			2.760/70.10	1.900/48.26	2.220/56.39	2.600/66.04					
-549	2 x 22			2.960/75.18	2.100/53.34	2.420/61.47	2.800/71.12					
-550	2 x 25			3.260/82.80	2.400/60.96	2.720/69.09	3.100/78.74					
-551	2 x 30		LOW PROFILE	3.760/95.50	2.900/73.66	3.220/81.79	3.600/91.44					
-552	2 x 8		NONE	1.560/39.62	.700/17.78	1.020/25.91	1.400/35.56				2	
-553	2 x 8		STD	1.560/39.62	.700/17.78	1.020/25.91	1.400/35.56				2	
-554	2 x 10		NONE	1.760/44.70	.900/22.86	1.220/30.99	1.600/40.64				2	
-555	2 x 10		STD	1.760/44.70	.900/22.86	1.220/30.99	1.600/40.64		5	5LF	2	
68710-556	2 x 20	D	STD	2.760/70.10	1.900/48.26	2.220/56.39	2.600/66.04	.160/4.06	1	1	1,15,16,17,18,19,20,21,22,37,38,39,40	NOTE 12

NOTE 10
NOTE 10
NOTE 10
NOTE 10
NOTE 10
NOTE 10
NOTE 10
NOTE 10
NOTE 10
NOTE 10
NOTE 10
NOTE 10

mat'l. code					surface ISO 1302 ✓		tolerance ISO 406 ISO 1101		projection 		product family QUICKIE																																																																																																																																																																																																																																																																																																																																																																																																																																																																																																																																																																																																																																																																																																																																																																																																																																																																																																																																																																																																																																																																																																																																																																																																																																																																																																																																																																																																																																																																																																																																																																																																																																																																																					
ltr	ecn	no	dr	date	tolerances unless otherwise specified							title																																																																																																																																																																																																																																																																																																																																																																																																																																																																																																																																																																																																																																																																																																																																																																																																																																																																																																																																																																																																																																																																																																																																																																																																																																																																																																																																																																																																																																																																																																																																																																																																																																																																																				
AG					angles	linear	.XX±.01/.3					INCH/MM P.F. HDR. ASSEMBLY SEA HORSE 4 WALL																																																																																																																																																																																																																																																																																																																																																																																																																																																																																																																																																																																																																																																																																																																																																																																																																																																																																																																																																																																																																																																																																																																																																																																																																																																																																																																																																																																																																																																																																																																																																																																																																																																																																				
							.XXX±.005/.13																																																																																																																																																																																																																																																																																																																																																																																																																																																																																																																																																																																																																																																																																																																																																																																																																																																																																																																																																																																																																																																																																																																																																																																																																																																																																																																																																																																																																																																																																																																																																																																																																																																																																									
							.0°±2'																																																																																																																																																																																																																																																																																																																																																																																																																																																																																																																																																																																																																																																																																																																																																																																																																																																																																																																																																																																																																																																																																																																																																																																																																																																																																																																																																																																																																																																																																																																																																																																																																																																																																									
							.XXXX±.0020/.051					scale 1:1																																																																																																																																																																																																																																																																																																																																																																																																																																																																																																																																																																																																																																																																																																																																																																																																																																																																																																																																																																																																																																																																																																																																																																																																																																																																																																																																																																																																																																																																																																																																																																																																																																																																																				
					dr	M. CLOUSER	3/01/90					FCI dwg no 68710 sheet 12 of 13 size A3																																																																																																																																																																																																																																																																																																																																																																																																																																																																																																																																																																																																																																																																																																																																																																																																																																																																																																																																																																																																																																																																																																																																																																																																																																																																																																																																																																																																																																																																																																																																																																																																																																																																																				
					enrg	M. SMYK	3/01/90																																																																																																																																																																																																																																																																																																																																																																																																																																																																																																																																																																																																																																																																																																																																																																																																																																																																																																																																																																																																																																																																																																																																																																																																																																																																																																																																																																																																																																																																																																																																																																																																																																																																																									
					chr	M. SMYK	3/01/90																																																																																																																																																																																																																																																																																																																																																																																																																																																																																																																																																																																																																																																																																																																																																																																																																																																																																																																																																																																																																																																																																																																																																																																																																																																																																																																																																																																																																																																																																																																																																																																																																																																																																									
					appd	M. SMYK	3/01/90																																																																																																																																																																																																																																																																																																																																																																																																																																																																																																																																																																																																																																																																																																																																																																																																																																																																																																																																																																																																																																																																																																																																																																																																																																																																																																																																																																																																																																																																																																																																																																																																																																																																																									
sheet index		revision sheet																																																																																																																																																																																																																																																																																																																																																																																																																																																																																																																																																																																																																																																																																																																																																																																																																																																																																																																																																																																																																																																																																																																																																																																																																																																																																																																																																																																																																																																																																																																																																																																																																																																																																														



FCIconnect.com

Copyright FCI

PRODUCT NUMBER	SIZE	STYLE	LATCH	DIM A	DIM B	DIM C	DIM D	DIM E	PIN PLATING	LEAD FREE PIN PLATING	REMARKS	PINS REMOVED	LEAD FREE OPTION
68710-620	2 x 5	A	STD.	1.260/32.00	.400/10.16	.720/18.28	1.100/27.94	.120/3.05	2	2	MINI-LIF		NOTE 12
↑ -621	2 x 7	C	STD.	1.460/37.08	.600/15.24	.920/23.37	1.300/33.02	.120/3.05	2	2	MINI-LIF		
-640	2 x 20	D	STD.	2.760/70.10	1.900/48.26	2.220/56.39	2.600/66.04	.120/3.05	2	2	MINI-LIF		
-650	2 x 25	D	STD.	3.260/82.80	2.400/60.96	2.720/69.09	3.100/78.74	.120/3.05	2	2	MINI-LIF		
-651	2 x 22	D	STD.	2.960/75.18	2.100/53.34	2.420/61.47	2.800/71.12	.160/4.06	1	1		REMOVE PINS: 2,3,6,7,10,11,14,15,18,19,22,23, 26,27,30,31,34,35,38,39,42,43 & 44	
-652	2 x 5	A	STD.	1.260/32.00	.400/10.16	.720/18.29	1.100/27.94	↑	↑	↑		REMOVE PINS: 10	
-653	2 x 5	B	STD.	1.260/32.00	.400/10.16	.720/18.29	1.100/27.94					REMOVE PINS: 10	
-654	2 x 7	C	STD.	1.460/37.08	.600/15.24	.920/23.37	1.300/33.02					REMOVE PINS: 14	
-710	2 x 5	A	NONE	1.260/32.00	.400/10.16	.720/18.28	1.100/27.94						
↑ -714	2 x 7	C	↑	1.460/37.08	.600/15.24	.920/23.37	1.300/33.02						
-716	2 x 8	D		1.560/39.62	.700/17.78	1.020/25.91	1.400/35.56						NOTE 12
-720	2 x 10	↑		1.760/44.70	.900/22.86	1.220/30.99	1.600/40.64						
-726	2 x 13			2.060/52.32	1.200/30.48	1.520/38.61	1.900/48.26						
-734	2 x 17			2.460/62.48	1.600/40.64	1.920/48.79	2.300/58.42						
-740	2 x 20			2.760/70.10	1.900/48.26	2.220/56.39	2.600/66.04						
-750	2 x 25	↓	↓	3.260/82.80	2.400/60.96	2.720/69.09	3.100/78.74						
-760	2 x 30	D	NONE	3.760/95.50	2.900/73.66	3.220/81.79	3.600/91.44						
-810	2 x 5	A	STD.	1.260/32.00	.400/10.16	.720/18.29	1.100/27.94						
-814	2 x 7	C	↑	1.460/37.08	.600/15.24	.920/23.37	1.300/33.02						
-816	2 x 8	D	↑	1.560/39.62	.700/17.78	1.020/25.91	1.400/35.56						
-820	2 x 10	↑		1.760/44.70	.900/22.86	1.220/30.99	1.600/40.64						
-826	2 x 13			2.060/52.32	1.200/30.48	1.520/38.61	1.900/48.26						
-834	2 x 17			2.460/62.48	1.600/40.64	1.920/48.79	2.300/58.42						
-840	2 x 20			2.760/70.10	1.900/48.26	2.220/56.39	2.600/66.04						
-850	2 x 25	↓	↓	3.260/82.80	2.400/60.96	2.720/69.09	3.100/78.74						
-860	2 x 30	D	STD.	3.760/95.50	2.900/73.66	3.220/81.79	3.600/91.44						
-910	2 x 5	A	LOW	1.260/32.00	.400/10.16	.720/18.29	1.100/27.94						
-914	2 x 7	C	↑	1.460/37.08	.600/15.24	.920/23.37	1.300/33.02						
-916	2 x 8	D		1.560/39.62	.700/17.78	1.020/25.91	1.400/35.56						
-920	2 x 10	↑		1.760/44.70	.900/22.86	1.220/30.99	1.600/40.64						
-926	2 x 13			2.060/52.32	1.200/30.48	1.520/38.61	1.900/48.26						
-934	2 x 17			2.460/62.48	1.600/40.64	1.920/48.79	2.300/58.42						
-940	2 x 20			2.760/70.10	1.900/48.26	2.220/56.39	2.600/66.04						
-950	2 x 25	↓	↓	3.260/82.80	2.400/60.96	2.720/69.09	3.100/78.74						
↓ 68710-960	2 x 30	D	LOW	3.760/95.50	2.900/73.66	3.220/81.79	3.600/91.44	.160/4.06	1	1			

mat'l. code				surface ISO 1302 ✓		tolerance ISO 406 ISO 1101		projection 		product family QUICKIE			
ltr		ecn no		dr		date		tolerances unless otherwise specified		title			
AG								angles linear .XX±.01/.3		INCH/MM		P.F. HDR. ASSEMBLY	
								0°±2'		linear .XXX±.005/.13		SEA HORSE 4 WALL	
										scale 1:1		sheet 3 of 13 size	
								dr M. CLOUSER 3/01/90				dwg no 68710 A3	
								enr M. SMYK 3/01/90				type Product Customer Drawing	
								chr M. SMYK 3/01/90					
								appd M. SMYK 3/01/90					
sheet index		revision sheet											

Mouser Electronics

Authorized Distributor

Click to View Pricing, Inventory, Delivery & Lifecycle Information:

FCI:

[68710-233LF](#) [68710-233](#) [68710-152LF](#) [68710-080LF](#) [68710-152](#)