

# TA8254BHQ

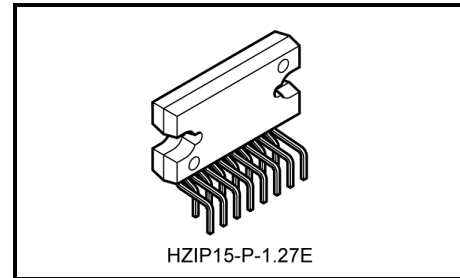
## Max Power 45 W BTL × 2 ch Audio Power IC

The TA8254BHQ is BTL stereo audio power amplifier for car audio application, especially for 2 Ω load impedance.

It is built-in Stand-by Function, Muting Function, diagnosis circuit output clipping detector and various kind of protections.

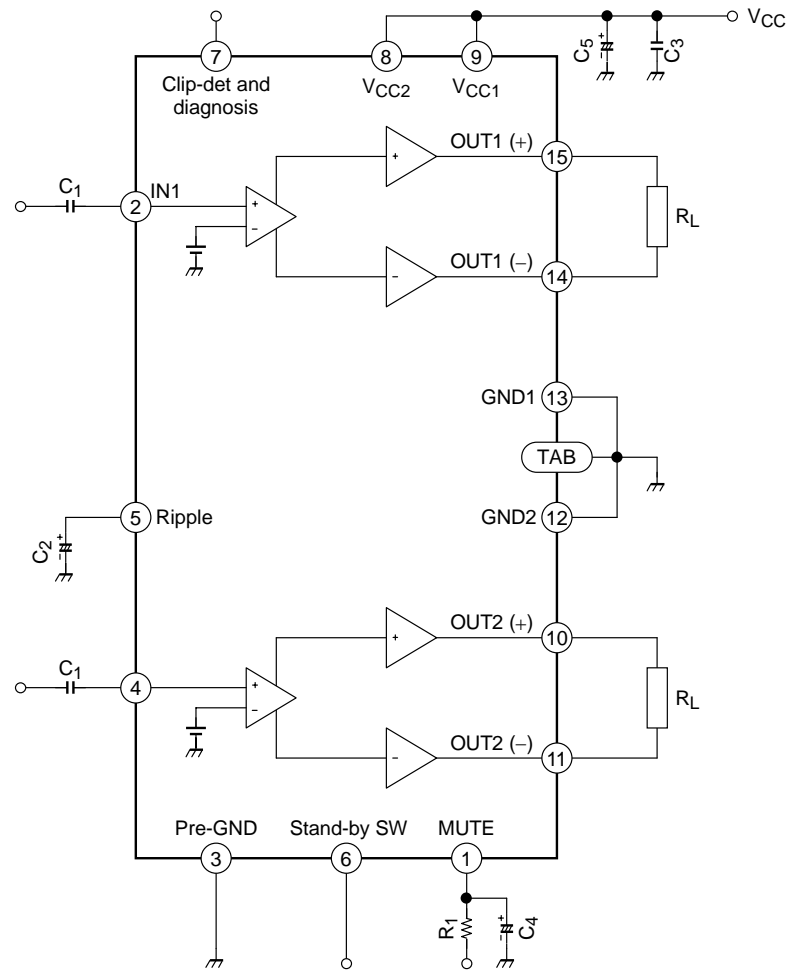
### Features

- High power
  - : P<sub>OUT</sub> (1) = 45 W (typ.) /channel  
(V<sub>CC</sub> = 14.4 V, f = 1 kHz, THD = 10%, R<sub>L</sub> = 2 Ω)
  - : P<sub>OUT</sub> (2) = 35 W (typ.) /channel  
(V<sub>CC</sub> = 13.2 V, f = 1 kHz, THD = 10%, R<sub>L</sub> = 2 Ω)
  - : P<sub>OUT</sub> (3) = 21 W (typ.) /channel  
(V<sub>CC</sub> = 13.2 V, f = 1 kHz, THD = 10%, R<sub>L</sub> = 4 Ω)
- Low distortion ratio
  - : THD = 0.02% (typ.)  
(V<sub>CC</sub> = 13.2 V, f = 1 kHz, P<sub>OUT</sub> = 10 W, R<sub>L</sub> = 4 Ω)
- Low noise
  - : V<sub>NO</sub> = 0.10 mVrms (typ.)  
(V<sub>CC</sub> = 13.2 V, R<sub>L</sub> = 4 Ω, R<sub>g</sub> = 0 Ω, BW = 20 Hz to 20 kHz)
- Built-in stand-by function
  - : (with pin set at LOW, power is turned OFF) I<sub>SB</sub> = 1 μA (typ.)
- Built-in output clipping detection and diagnosis circuit
  - : (open collector (active LOW))
- Built-in various protection circuits
  - : Thermal shut down, over voltage, OUT → V<sub>CC</sub> short, OUT → GND short and OUT-OUT short.
- Operating supply voltage: V<sub>CC</sub> (opr) = 9 to 18 V



Weight: 4.0 g (typ.)

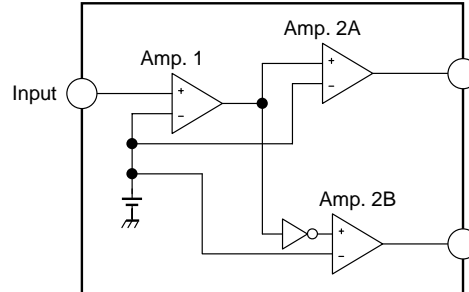
## Block Diagram



## Caution and Application Method (description is made only on the single channel)

### 1. Voltage Gain Adjustment

This IC has no NF (negative feedback) terminals. Therefore, the voltage gain can't adjusted, but it makes the device a space and total costs saver.



**Figure 1 Block Diagram**

The voltage gain of Amp. 1:  $GV_1 = 0\text{dB}$

The voltage gain of Amp. 2A, B:  $GV_2 = 20\text{dB}$

The voltage gain of BLT Connection:  $GV(\text{BTL}) = 6\text{dB}$

Therefore, the total voltage gain is decided by expression below.

$$GV = GV_1 + GV_2 + GV(\text{BTL}) = 0 + 20 + 6 = 26\text{dB}$$

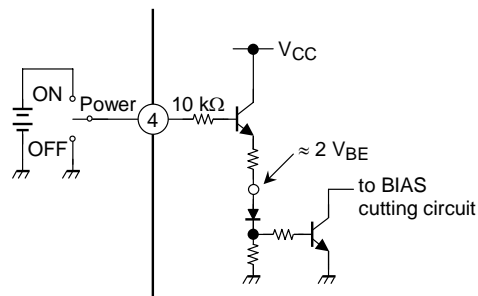
## 2. Stand-by SW Function (pin 6)

By means of controlling pin 6 (stand-by terminal) to High and Low, the power supply can be set to ON and OFF.

The threshold voltage of pin 6 is set at about  $3 V_{BE}$  (typ.), and the Power Supply current is about  $1 \mu A$  (typ.) at the stand-by state.

### Control Voltage of Pin 6: $V_{SB}$

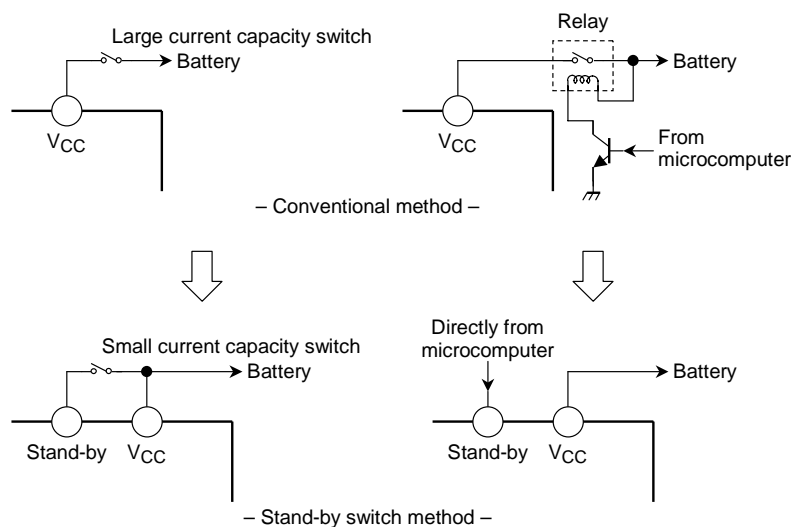
Stand-by	Power	$V_{SB}$ (V)
ON	OFF	0 to 1.5
OFF	ON	3 to $V_{CC}$



**Figure 2 With Pin 6 Set to High, Power is Turned ON**

### Adjustable with Stand-by SW

- (1) Since  $V_{CC}$  can directly be controlled to ON or OFF by the microcomputer, the switching relay can be omitted.
- (2) Since the control current is microscopic, the switching relay of small current capacity is satisfactory for switching



**Figure 3 Stand-by Switch**

### 3. Muting Function (pin 1)

By means of controlling pin 1 less than 0.5 V, it can make the audio muting condition.

The muting time constant is decided by  $R_1$  and  $C_4$  and these parts is related the pop noise at power ON/OFF.

The series resistance;  $R_1$  must be set up less than 15 k $\Omega$ , we recommend 10 k $\Omega$ .

The muting function have to be controlled by a transistor, FET and  $\mu$ -COM port which has  $I_{MUTE} > 250 \mu A$  ability.

pin 1 must not be pulled up and it shall be controlled by OPEN/LOW.

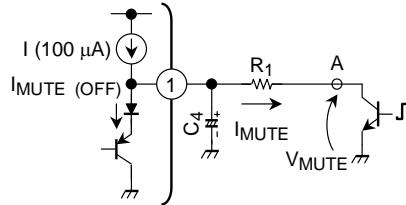


Figure 4 Muting Function

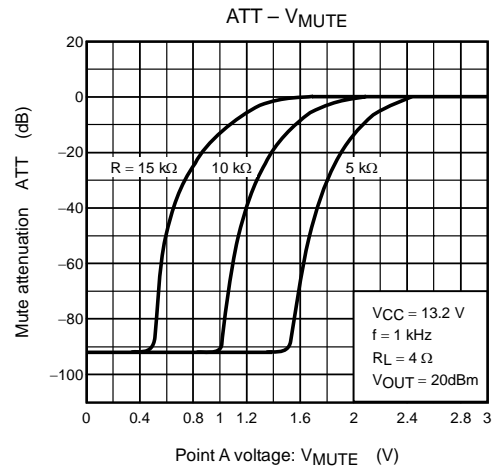


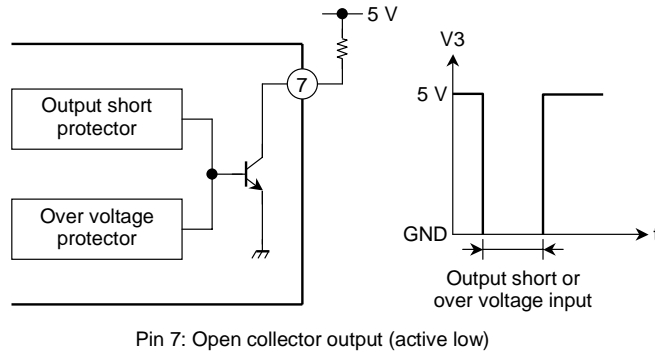
Figure 5 Mute Attenuation –  $V_{MUTE}$  (V)

#### 4. Diagnosis Output (pin 7)

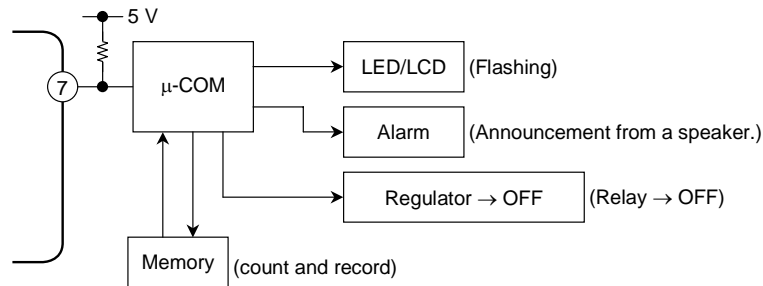
The diagnosis output terminal of pin 7 has open collector output structure on chip as shown in Figure 6.

In unusual case that output terminal of Power Amp. is condition of output to VCC or output to GND short and over voltage input mode, it is possible to protect all the system of apparatus as well as power IC protection.

In case of being unused this function, use this IC as open-connection on pin 7.



**Figure 6 Self Diagnosis Output**



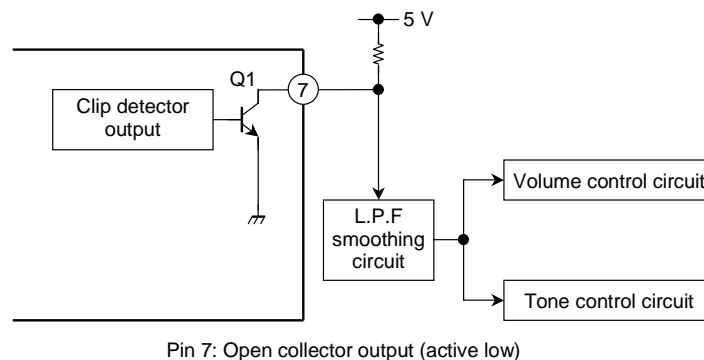
**Figure 7 Application 1**

## 5. Output Clip Detection Function (pin 7)

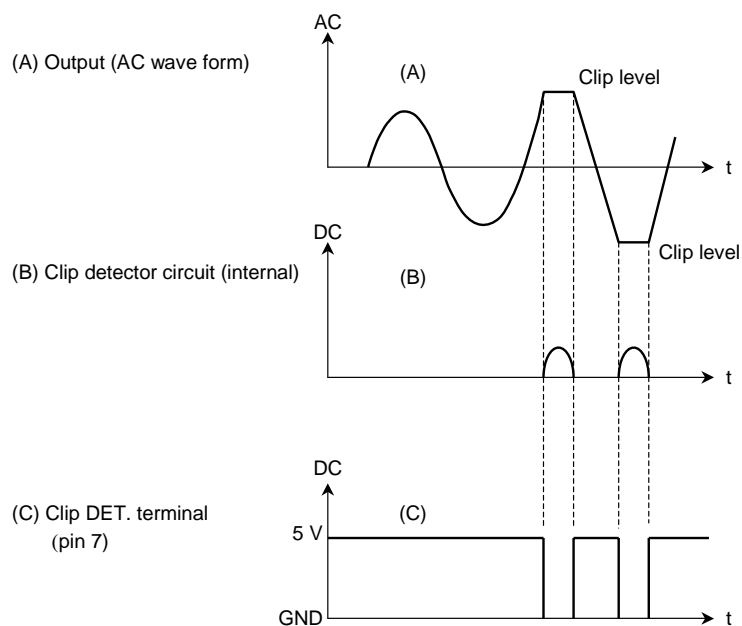
The output clip detection terminal of pin 7 has the open collector output structure on chip as shown in Figure 8. In case that the output waveform is clipping, the clip detection circuit is operated and NPN Tr. is turned on.

It is possible to improve the audio quality with controlling the volume, tone control circuit through L.P.F. smoothing circuit as shown in Figure 8.

In case of being unused this function, use this IC as open connection on pin 7.



**Figure 8 Application 2**



**Figure 9 Clip Detection**

**Maximum Ratings (Ta = 25°C)**

Characteristics	Symbol	Rating	Unit
Peak supply voltage (0.2 s)	V <sub>CC</sub> (surge)	50	V
DC supply voltage	V <sub>CC</sub> (DC)	25	V
Operation supply voltage	V <sub>CC</sub> (opr)	18	V
Output current (peak)	I <sub>O</sub> (peak)	9	A
Power dissipation	P <sub>D</sub> (Note 1)	83	W
Operation temperature	T <sub>opr</sub>	–40 to 85	°C
Storage temperature	T <sub>stg</sub>	–55 to 150	°C

Note 1: Package thermal resistance  $\theta_{j-T} = 1^{\circ}\text{C/W}$  (typ.)  
(Ta = 25°C, with infinite heat sink)

**Electrical Characteristics**

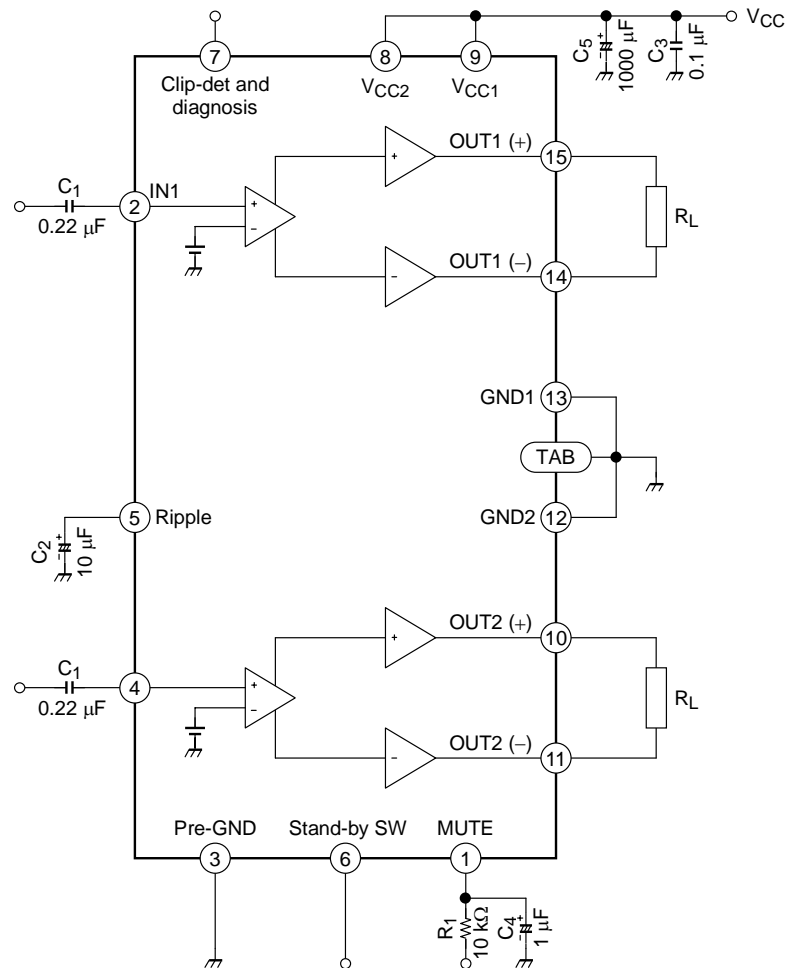
(unless otherwise specified, V<sub>CC</sub> = 13.2 V, R<sub>L</sub> = 4  $\Omega$ , f = 1 kHz, Ta = 25°C)

Characteristics	Symbol	Test Circuit	Test Condition	Min	Typ.	Max	Unit
Quiescent current	I <sub>CCQ</sub>	—	V <sub>IN</sub> = 0	—	120	250	mA
Output power	P <sub>OUT</sub> (1)	—	V <sub>CC</sub> = 14.4 V, R <sub>L</sub> = 2 $\Omega$ THD = 10%	40	45	—	W
	P <sub>OUT</sub> (2)	—	R <sub>L</sub> = 2 $\Omega$ , THD = 10%	—	35	—	
	P <sub>OUT</sub> (3)	—	THD = 10%	19	21	—	
Total harmonic distortion	THD	—	P <sub>OUT</sub> = 10 W	—	0.02	0.2	%
Voltage gain	G <sub>V</sub>	—	—	24	26	28	dB
Voltage gain ratio	$\Delta G_V$	—	—	–1.0	0	1.0	dB
Output noise voltage	V <sub>NO</sub>	—	R <sub>g</sub> = 0 $\Omega$ , BW = 20 Hz~20 kHz	—	0.10	0.35	mVrms
Ripple rejection ratio	R.R.	—	f <sub>ripple</sub> = 100 Hz, R <sub>g</sub> = 600 $\Omega$	40	55	—	dB
Input resistance	R <sub>IN</sub>	—	—	—	90	—	k $\Omega$
Output offset voltage	V <sub>OFFSET</sub>	—	V <sub>IN</sub> = 0	–150	0	150	mV
Current at stand-by state	I <sub>SB</sub>	—	—	—	1	10	$\mu\text{A}$
Cross talk	C.T.	—	R <sub>g</sub> = 600 $\Omega$ V <sub>OUT</sub> = 0.775 Vrms (0dBm)	—	75	—	dB
Stand-by control voltage	V <sub>SB</sub>	—	Stand-by → OFF (Power → ON)	3.0	—	V <sub>CC</sub>	V
Diagnosis out saturation voltage	V <sub>sat</sub>	—	I <sub>C</sub> = 1 mA	—	100	—	mV
Mute control voltage (Note 2)	V <sub>M</sub> H	—	Mute: OFF	Open			V
	V <sub>M</sub> L	—	Mute: ON,	0	—	1.5	
Mute attenuation	ATT M	—	Mute: ON, V <sub>OUT</sub> = 7.75 Vrms (20dBm) at Mute: OFF	—	85	—	dB

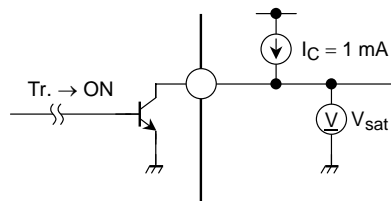
Note 2: Muting function must be controlled by open and low logic.  
This means that the mute control terminal: pin 1 must not be pulled up.

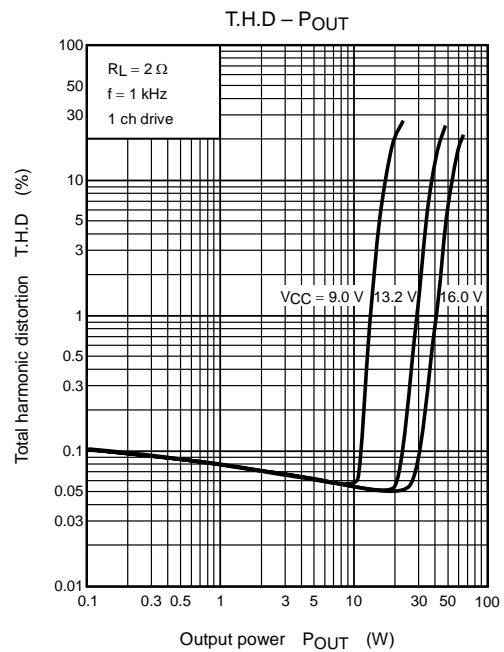
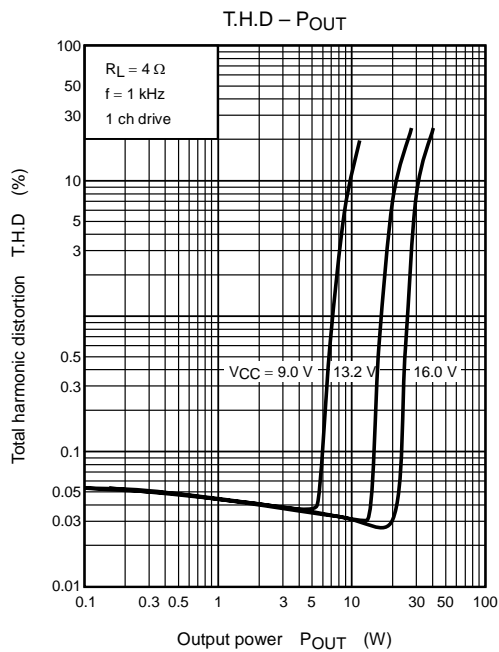
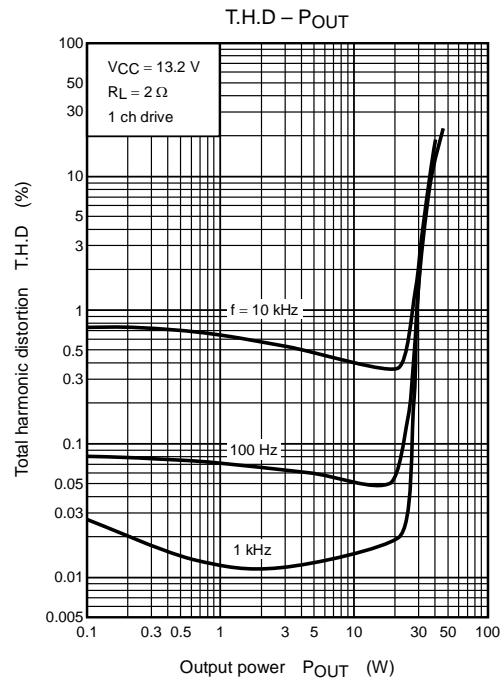
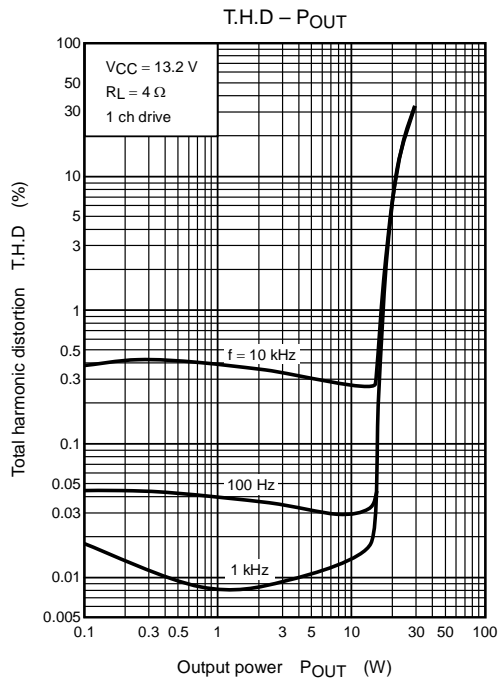


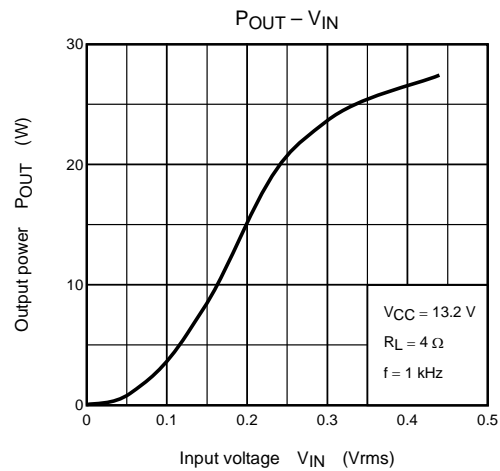
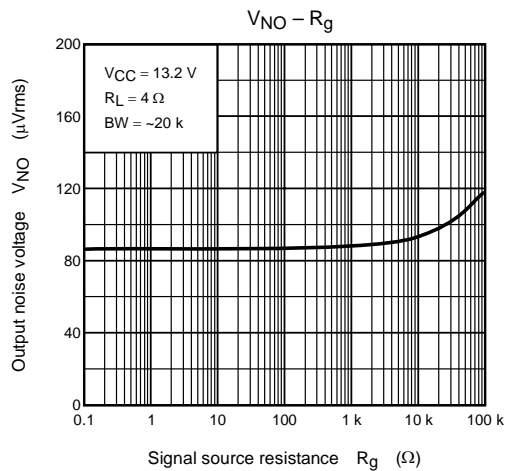
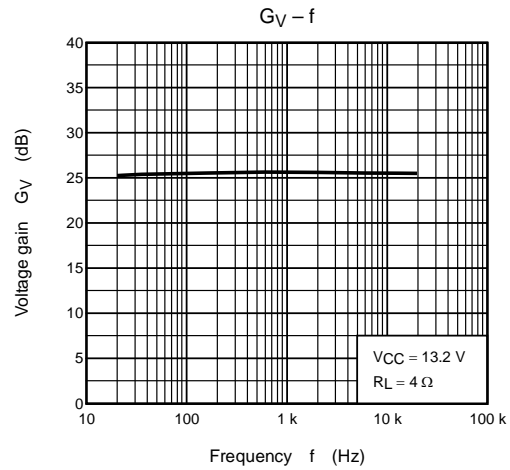
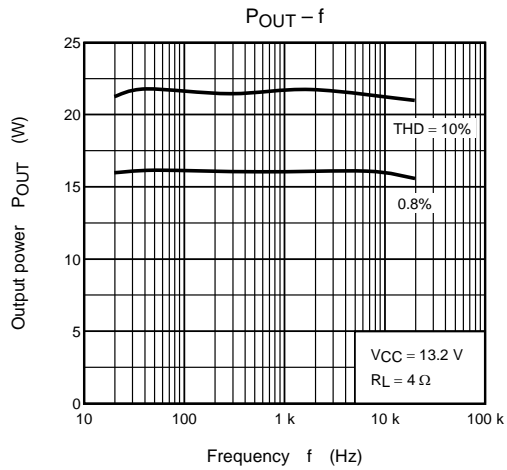
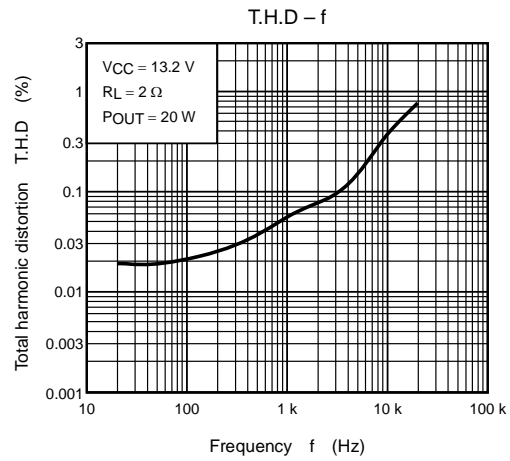
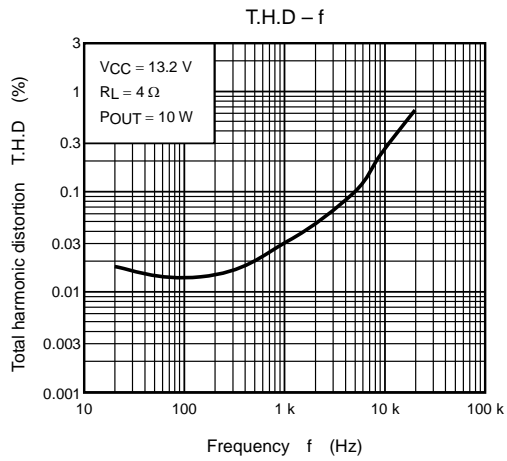
## Test Circuit

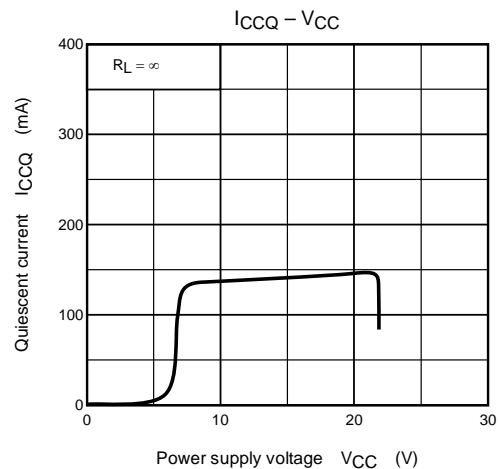
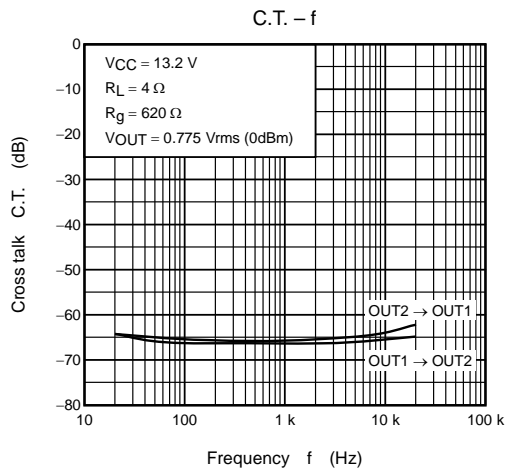
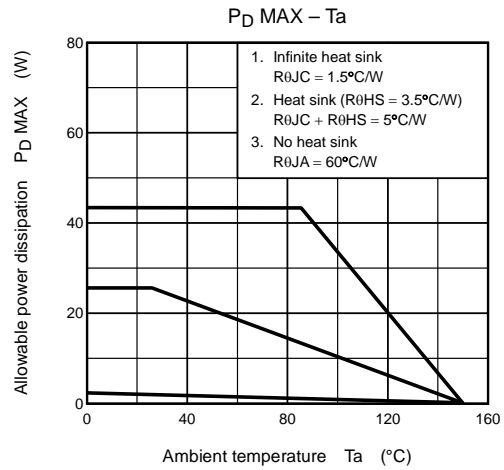
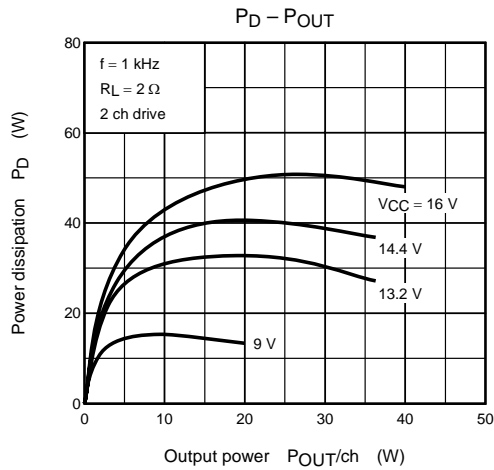
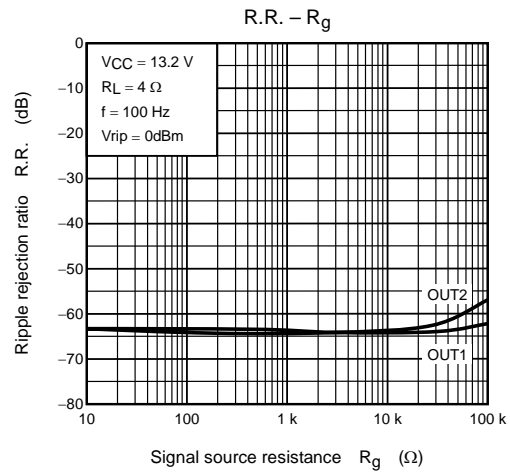
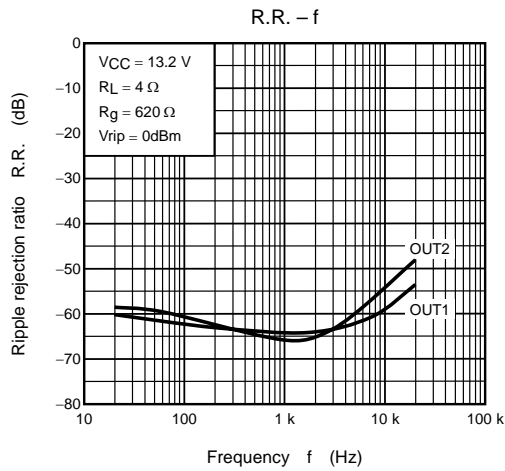


## Diagnosis Out Test Circuit





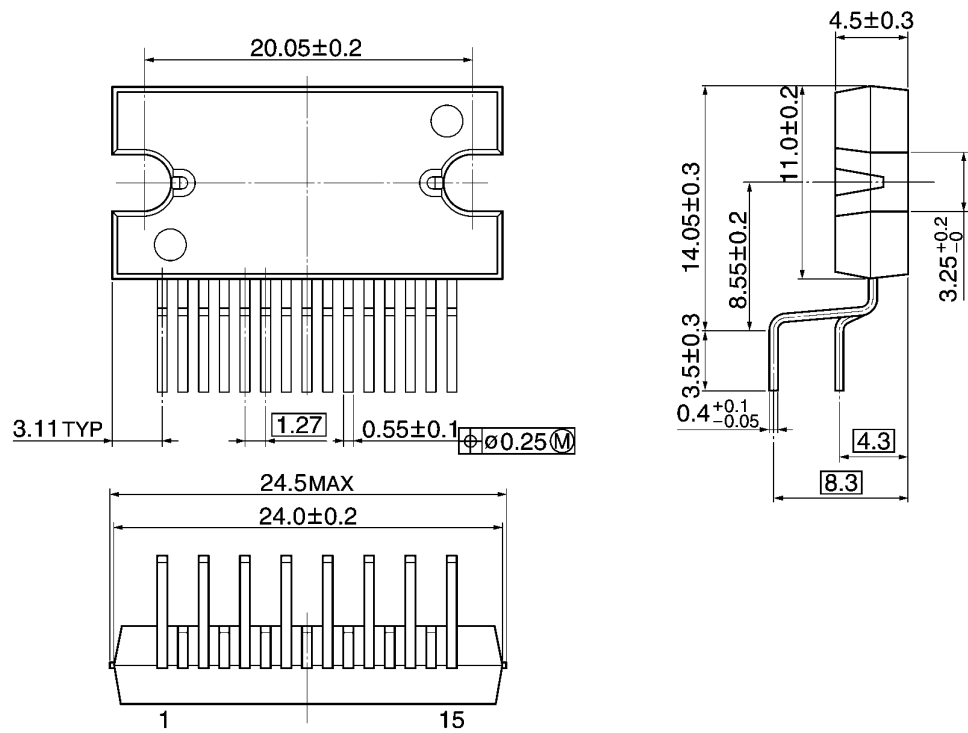




## Package Dimensions

HZIP15-P-1.27E

Unit: mm



Weight: 4.0 g (typ.)

About solderability, following conditions were confirmed

- Solderability
  - (1) Use of Sn-63Pb solder Bath
    - solder bath temperature = 230°C
    - dipping time = 5 seconds
    - the number of times = once
    - use of R-type flux
  - (2) Use of Sn-3.0Ag-0.5Cu solder Bath
    - solder bath temperature = 245°C
    - dipping time = 5 seconds
    - the number of times = once
    - use of R-type flux

## RESTRICTIONS ON PRODUCT USE

030619EBF

- The information contained herein is subject to change without notice.
- The information contained herein is presented only as a guide for the applications of our products. No responsibility is assumed by TOSHIBA for any infringements of patents or other rights of the third parties which may result from its use. No license is granted by implication or otherwise under any patent or patent rights of TOSHIBA or others.
- TOSHIBA is continually working to improve the quality and reliability of its products. Nevertheless, semiconductor devices in general can malfunction or fail due to their inherent electrical sensitivity and vulnerability to physical stress. It is the responsibility of the buyer, when utilizing TOSHIBA products, to comply with the standards of safety in making a safe design for the entire system, and to avoid situations in which a malfunction or failure of such TOSHIBA products could cause loss of human life, bodily injury or damage to property.  
In developing your designs, please ensure that TOSHIBA products are used within specified operating ranges as set forth in the most recent TOSHIBA products specifications. Also, please keep in mind the precautions and conditions set forth in the "Handling Guide for Semiconductor Devices," or "TOSHIBA Semiconductor Reliability Handbook" etc..
- The TOSHIBA products listed in this document are intended for usage in general electronics applications (computer, personal equipment, office equipment, measuring equipment, industrial robotics, domestic appliances, etc.). These TOSHIBA products are neither intended nor warranted for usage in equipment that requires extraordinarily high quality and/or reliability or a malfunction or failure of which may cause loss of human life or bodily injury ("Unintended Usage"). Unintended Usage include atomic energy control instruments, airplane or spaceship instruments, transportation instruments, traffic signal instruments, combustion control instruments, medical instruments, all types of safety devices, etc.. Unintended Usage of TOSHIBA products listed in this document shall be made at the customer's own risk.
- The products described in this document are subject to the foreign exchange and foreign trade laws.
- TOSHIBA products should not be embedded to the downstream products which are prohibited to be produced and sold, under any law and regulations.
- This product generates heat during normal operation. However, substandard performance or malfunction may cause the product and its peripherals to reach abnormally high temperatures.  
The product is often the final stage (the external output stage) of a circuit. Substandard performance or malfunction of the destination device to which the circuit supplies output may cause damage to the circuit or to the product.