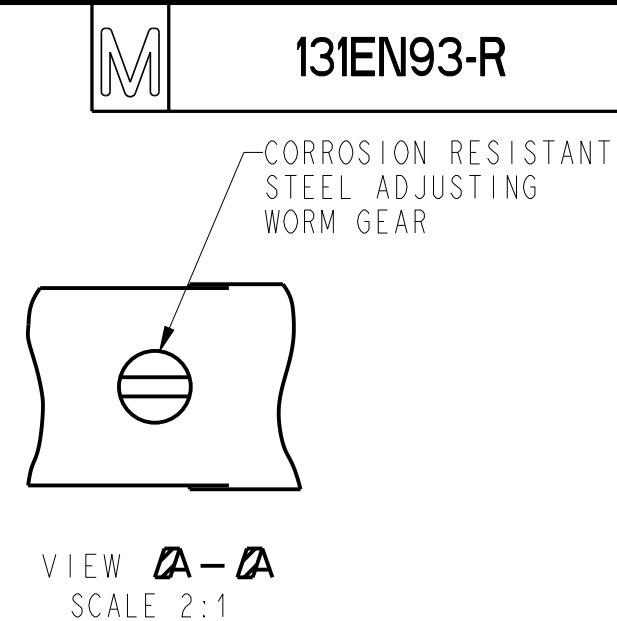
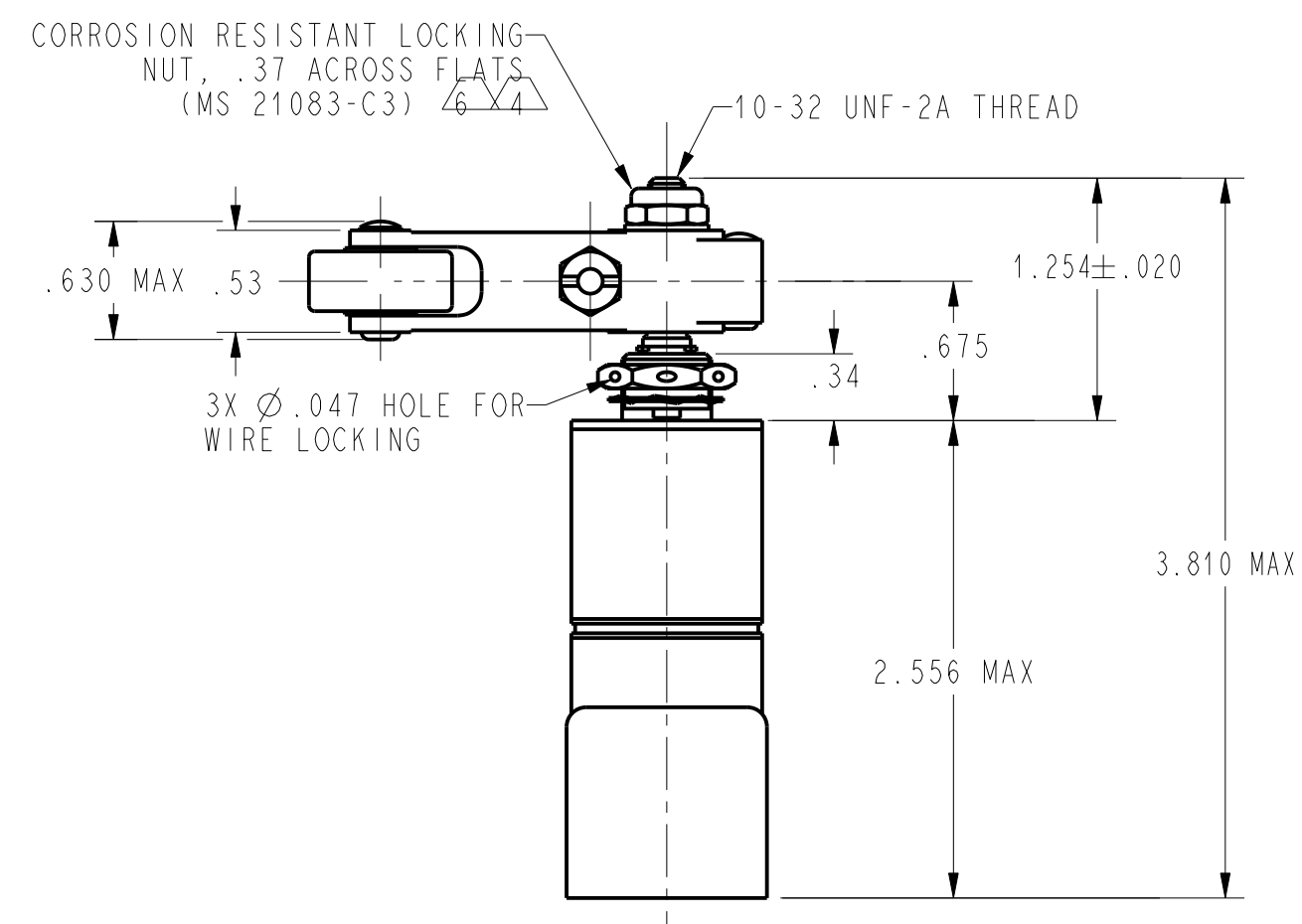


LEVER ADJUSTMENT DETAIL  
SCALE 2:1



- NOTES
- 1 - NOTED ELECTRICAL RATING APPLY AS SPECIFIED IN MIL-PRF-8805/40-1 UP TO 185°F
  - 2 - SWITCH SEALED PER MIL-PRF-8805, SYMBOL 4
  - 3 - CORROSION RESISTANT STEEL SHAFT, BUSHING AND PINS
  - 4 - DO NOT APPLY MORE THAN 20-25 INCH-POUNDS OF TORQUE WHEN TIGHTENING LOCKING NUT
  - 5 - CIRCUIT DIAGRAM, CAT LISTING, AND FCSM NO. ARE MARKED ON SWITCH
  - 6 - HARDWARE MAY BE PACKAGED UNASSEMBLED PER MIL-PRF-8805
  - 7 - REPLACEMENT MOUNTING HARDWARE - PACKET 19PA10
  - 8 - .050 WIDE X  $\nabla$ .050 SLOT
  - 9 -  $\varnothing$ .037 HOLE FOR WIRE LOCKING



CHARACTERISTICS		ELECTRICAL DATA		
OPERATING TORQUE ----- 12-25 IN LB		CONTACT ARRANGEMENT 2X S P D T (SEE CIRCUIT DIAGRAM)		
RELEASE TORQUE ----- 9 IN LB MIN		LOAD	28 VDC	
PRETRAVEL _____			SEA LEVEL	50,000 FT
DIFFERENTIAL TRAVEL _____		RES	4	4
OVERTRAVEL _____		IND	2	2
FREE POSITION _____		MOTOR	4	
SEE DETAIL				

ANSI Y14.5M-1982 APPLIES

THIS DRAWING COVERS A PROPRIETARY ITEM AND IS THE PROPERTY OF MICRO SWITCH, A DIVISION OF HONEYWELL. THIS DRAWING IS NOT TO BE COPIED OR USED WITHOUT THE APPROVAL OF MICRO SWITCH.

**MICRO SWITCH**  
a Honeywell Division

FED. MFG. CODE 91929

**SWITCH - ENCLOSED**

---

CATALOG LISTING

131EN93-R

THIRD ANGLE PROJECTION



SCALE FULL

DO NOT SCALE PRINT

UNLESS OTHERWISE SPECIFIED  
TOLERANCES ARE

ONE PLACE      (.0)       $\pm .030$

TWO PLACES      (.00)       $\pm .015$ 

THREE PLACES (.000)  $\pm .005$

ANGLES  $\pm$

WEIGHT 12.0 OZ MAX

# Mouser Electronics

Authorized Distributor

Click to View Pricing, Inventory, Delivery & Lifecycle Information:

[Honeywell:](#)

[131EN93-R](#)