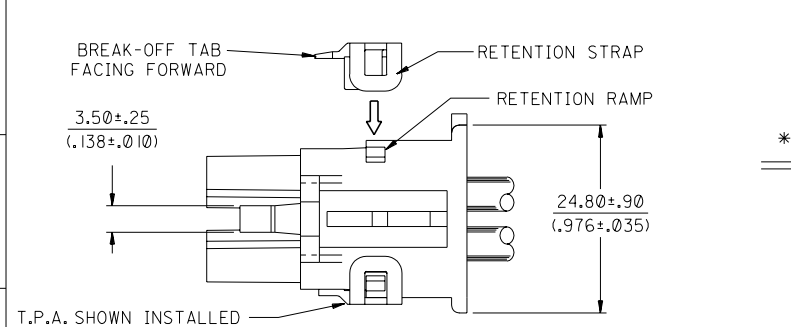
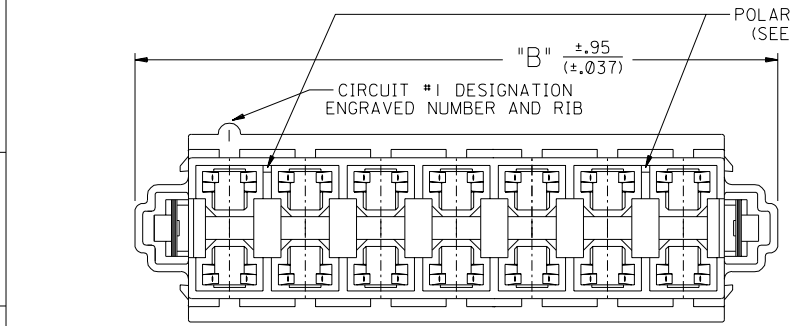
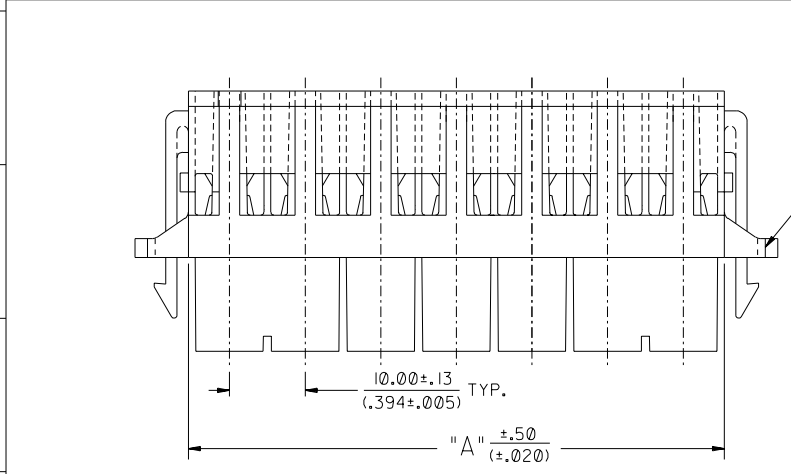


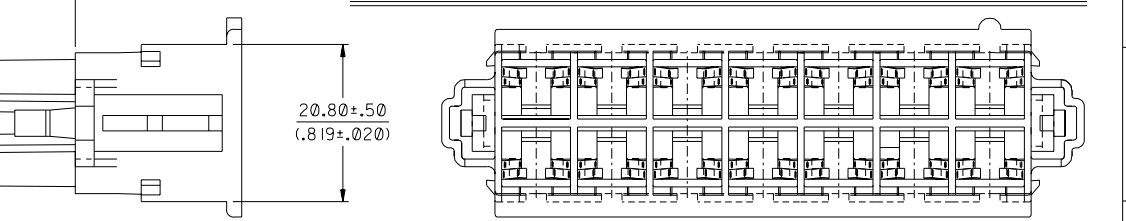
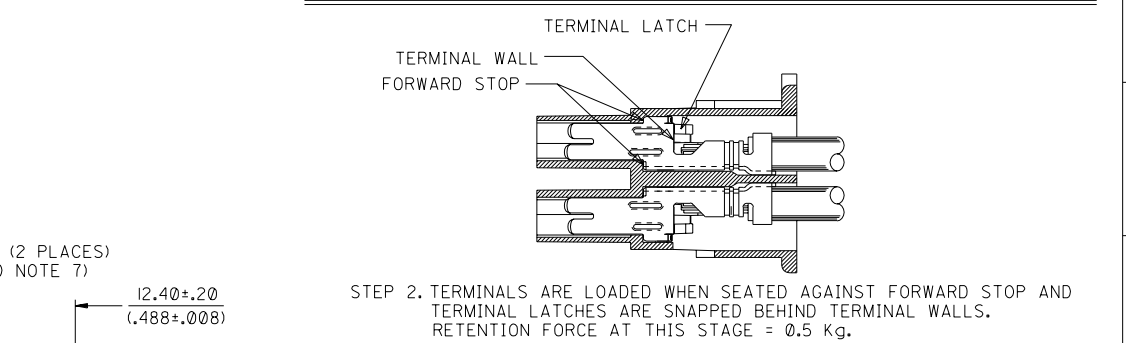
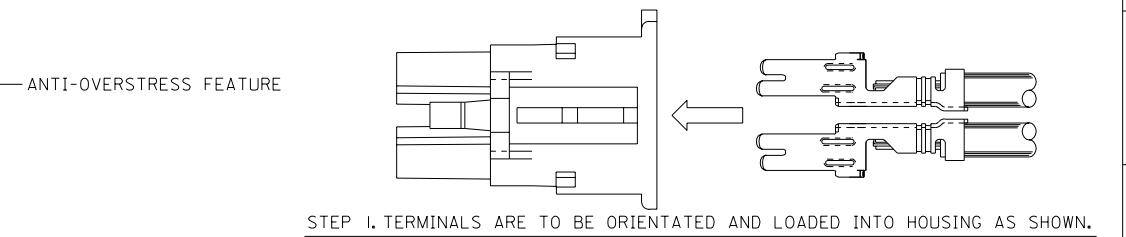
MATERIAL NUMBER	CIRCUITS	DIM. "A"	DIM. "B"	POLARIZING WEBS	
				PRESENT	QTY.
43914-1001	6	30.90/(1.217)	45.70/(1.799)	NO	0
43914-1002	8	40.90/(1.610)	55.70/(2.193)	NO	0
43914-1003	10	50.90/(2.004)	65.70/(2.587)	NO	0
43914-1004	12	60.90/(2.398)	75.70/(2.980)	NO	0
43914-1005	14	70.90/(2.791)	85.70/(3.374)	NO	0
43914-1101	6	30.90/(1.217)	45.70/(1.799)	YES	1
43914-1102	8	40.90/(1.610)	55.70/(2.193)	YES	2
43914-1103	10	50.90/(2.004)	65.70/(2.587)	YES	2
43914-1104	12	60.90/(2.398)	75.70/(2.980)	YES	2
43914-1105	14	70.90/(2.791)	85.70/(3.374)	YES	2

OBSOLETE

- NOTES:
1. MATERIAL: POLYESTER, U.L. 94V-0. COLOR: BLACK
 2. PRODUCT SPEC.: PS-42815-001
 3. USES STANDARD 42815 MINI-FIT SR, FEMALE CRIMP TERMINALS.
 4. EACH WIRE MUST BE DRESSED SUCH THAT THE TERMINAL MAINTAINS ITS FREE FLOAT WITHIN THE HOUSING.
 5. TPA #43980 MUST ALWAYS BE USED WITH THIS CONNECTOR.
 6. PART MATES WITH MOLEX HEADER 43915.
 7. POLARIZING WEBS TO BE LOCATED BETWEEN CIRCUITS ON EITHER END OF HOUSING OF THE CIRCUIT 1 ROW AS SHOWN.
EXCEPTION: THE 6 CIRCUIT HOUSING WILL HAVE A SINGLE WEB ON THE CIRCUIT 1 END.



STEP 3. AFTER TERMINALS ARE LOADED INTO HOUSING, T.P.A. IS TO BE "BROKEN OR CUT" IN HALF, ORIENTATED AND INSTALLED IN THE DIRECTION SHOWN UNTIL THE RETENTION STRAPS SNAP OVER THE RETENTION RAMPS. THIS PRODUCT MUST NEVER BE USED WITHOUT THE INSTALLATION OF THE T.P.A.



* THIS PRODUCT MUST NEVER BE USED WITHOUT THE T.P.A *

ADDED NOTE

EC NO: UCR2004-0496

DRW: COMERC 03/09/12

CHK: COMERC 03/09/12

APP: COMERC 03/09/12

REV E2

DESCRIPTION

MAJOR

CRITICAL

REV

QUALITY SYMBOLS

MAJOR

CRITICAL

GENERAL TOLERANCES: (UNLESS SPECIFIED)

mm

INCH

4 PLACES ±0.--- ±.---

3 PLACES ±0.--- ±.---

2 PLACES ±0.--- ±.---

1 PLACE ±0.--- ±.---

ANGULAR: ± 0

DRAFT WHERE APPLICABLE MUST REMAIN WITHIN DIMENSIONS

SCALE 2: 1

DESIGN UNITS

mm

INCH

THIRD ANGLE PROJECTION

DRAWN BY & DATE COMERC 97/08/20

CHECKED BY & DATE COMERC 97/08/25

APPROVED BY & DATE FRY 97/08/26

CAD FILENAME

THIS DRAWING CONTAINS INFORMATION THAT IS PROPRIETARY TO MOLEX INCORPORATED AND SHOULD NOT BE USED WITHOUT WRITTEN PERMISSION.

DIMENSIONS:

mm

INCH

mm ONLY

INCH ONLY

SHT

REV

REVISE ON CAD ONLY

TITLE: RECEPTACLE HOUSING DUAL ROW 6-14 CIRCUIT (MINI-FIT SR.)

MOLEX MOLEX INCORPORATED

MATERIAL NO. SEE CHART

DRAWING NO. SD-43914-002

SHEET NO. 1 OF 1

SIZE C

Mouser Electronics

Authorized Distributor

Click to View Pricing, Inventory, Delivery & Lifecycle Information:

CONEC:

500X10015MP