

# Speed Controller with Pilot Check Valve Universal Type

Drop Prevention

## Series ASP

### Features

- ▶ Two individual products combined into one unit
- ▶ Compact, space saving solution which can be directly mounted to the actuator
- ▶ One touch fitting makes piping easier and body swivels 360°
- ▶ Brass parts electroless nickel plated as standard
- ▶ The speed controller with pilot check valve is used to stop the cylinder in mid stroke for extended periods of time when air is cut-off



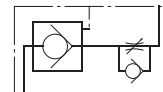
Applicable tubing O.D.: Metric Size

### Specifications

Proof pressure	1.5MPa
Max. operating pressure	1MPa
Min. operating pressure	0.1MPa
Pilot check valve operating pressure	50% or more the operating pressure
Ambient and fluid temperature	-5 to 60C (With no condensation)
Number of needle rotations	10 rotations
Applicable tubing material	Nylon, Soft nylon, Polyurethane

Note) Pay attention to the maximum operating pressure when soft nylon or polyurethane is used.

### JIS Symbol



Connection thread ⑥



Connection thread ⑥

### Model

Model	Port size	Applicable tubing O.D.				Pilot port
		6	8	10	12	
ASP330F-01	R1/8	●	●			M5
ASP430F-02	R1/4	●	●			Rc1/8
ASP530F-03	R3/8		●	●		Rc1/8
ASP630F-04	R1/2			●	●	Rc1/4

Note) Brass parts are all electroless nickel plated.

Built-in pilot check valve to prevent drop down.  
Temporary intermediate stop.

Applicable tubing O.D. mm	Connection thread ⑥	Connection thread ⑥	Model
			Universal type
6	R1/8	M5	ASP330F-01-06S
	R1/4	Rc1/8	ASP430F-02-06S
8	R1/8	M5	ASP330F-01-08S
	R1/4	Rc1/8	ASP430F-02-08S
	R3/8	Rc1/8	ASP530F-03-08S
10	R3/8	Rc1/8	ASP530F-03-10S
	R1/2	Rc1/4	ASP630F-04-10S
12	R1/2	Rc1/4	ASP630F-04-12S

### How to Order

**ASP 3 30F-01-06 S**

- ASP: Pilot check valve
- 3: Body size
 

3	1/8 Standard
4	1/4 Standard
5	3/8 Standard
6	1/2 Standard
- 30F: Type
 

3	Universal
---	-----------
- 01: Port size
 

Symbol	Cylinder side	Pilot port
01	R1/8	M5
02	R1/4	Rc1/8
03	R3/8	Rc1/8
04	R1/2	Rc1/4
- 06: Applicable tubing O.D. Metric size
 

06	ø6
08	ø8
10	ø10
12	ø12
- S: With sealant

With one-touch fitting

