



## L1904C/RPCS DIN STYLE CONNECTOR



Designed for use on the edge of printed circuit boards, this socket has been fitted with mounting brackets to make it self-supporting. The plastic front panel allows sockets to be 'butted' together to form a sub-panel which will close a slot or aperture in an external cover. The socket may be flow soldered to the PCB and mechanically secured using M2.5 screws or rivets. All PCB holes are on multiples of 2.54 pitch (0.1").

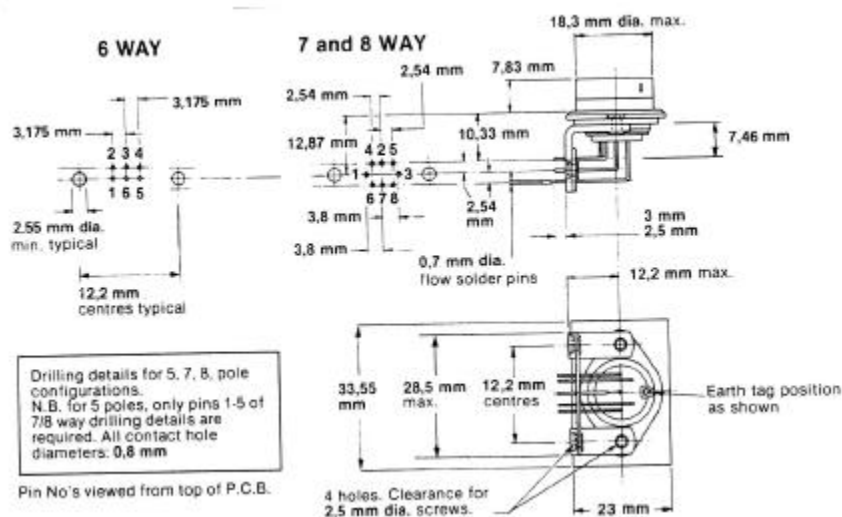
### MATERIALS

<b>CONTACTS:</b>	<b>Brass, silver plated</b>
<b>CONTACT TERMINATION:</b>	<b>Dip solder, brass, silver plated</b>
<b>BRACKETS:</b>	<b>Steel, tin plated</b>
<b>FRONT PANEL:</b>	<b>Noryl</b>
<b>FLAMMABILITY RATING:</b>	<b>UL 94 V1</b>

**ORDERING REFERENCE:**  
**DIRECT PCB MOUNTING L1904C\*/RPCS**

\*number of poles

Note: Only available in 5, 6, 7 and 8 way configuration



Dialight BLP reserve the right to change without prior notice the information contained within this leaflet

**Dialight BLP Ltd., Exning Road, Newmarket, Suffolk, CB8 0AX, England**  
Tel: +44 (0)1638 665161 Fax: +44 (0)1638 660718 email: [sales@blpcomp.com](mailto:sales@blpcomp.com) [www.blpcomp.com](http://www.blpcomp.com)