

(1.27 mm) .050"

CFT, CFS SERIES

# COMPACT FLASH TERMINALS & SOCKETS

## SPECIFICATIONS

For complete specifications and recommended PCB layouts see [www.samtec.com?CFT](http://www.samtec.com?CFT) or [www.samtec.com?CFS](http://www.samtec.com?CFS)

**Insulator Material:**  
Black Liquid Crystal Polymer

**Terminal Material (CFT):**  
Phosphor Bronze

**Contact Material (CFS):**  
BeCu

**Plating:**

Sn or Au over  
50µ" (1.27 µm) Ni

**Operating Temp Range:**

CFT = -55 °C to +105 °C Tin  
CFT = -55 °C to +125 °C Gold  
CFS = -55 °C to +125 °C

**Insertion Depth (CFS):**

(3.05 mm) .120" min

**Insertion Force (CFS):**

(Single contact only)

3.3 oz (0.92 N) avg.

**Withdrawal Force (CFS):**

(Single contact only)

2.5 oz (0.70 N) avg.

**Lead-Free Solderable:**

Yes

**SMT Lead Coplanarity:**

CFT = (0.15 mm) .006" max

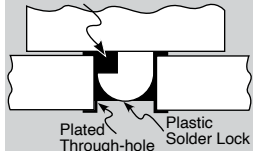
CFS = 0.10 mm) .004" max

**RoHS Compliant:**

Yes

## APPLICATIONS

Reflowed solder forced into lock notch



## RECOGNITIONS

For complete scope of recognitions see [www.samtec.com/quality](http://www.samtec.com/quality)



FILE NO. E111594



Mates with:  
CFS

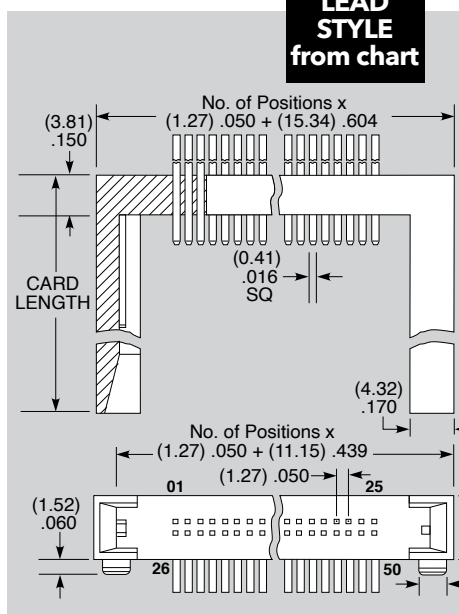
Specify LEAD STYLE from chart

**-L**  
= 10µ" (0.25 µm) Gold on post, Matte Tin on tail

**-S**  
= 30µ" (0.76 µm) Gold on post, Matte Tin on tail

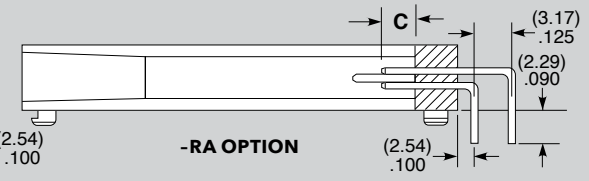
**-01**  
= (25.40 mm) 1.00" Card Length

**-02**  
= (50.80 mm) 2.00" Card Length



LEAD STYLE	Y
-01	(6.35) .250
-02	(8.89) .350

POSITION NUMBER	C (POST)
(3.50) .138	(3.50) .138
(5.00) .197	(5.00) .197
(4.25) .167	(4.25) .167



Mates with:  
CFS

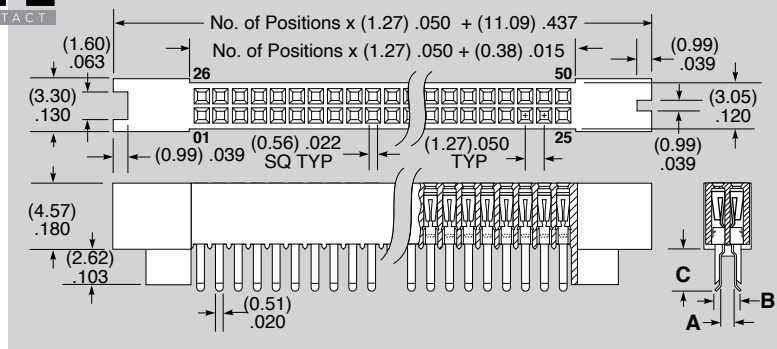
**25**

**-01**  
= (0.80 mm) .031" thick board

**-02**  
= (1.60 mm) .062" thick board

**-L**  
= 10µ" (0.25 µm) Gold on contact, Matte Tin on tail

**-S**  
= 30µ" (0.76 µm) Gold on contact, Matte Tin on tail



CARD THICKNESS	A	B	C
-01	(1.02) .040	(1.79) .070	(3.12) .123
-02	(1.70) .067	(2.46) .097	(2.77) .109

**Note:**  
Some lengths, styles and options are non-standard, non-returnable.