



## Specifications

### Mechanical

Operating Force : 200gf-cm max.

### Environmental

Operating Temperature : -40°C to +85°C

Storage Temperature : -40°C to +85°C

### Electrical

Electrical Life : 20,000 steps

Switching Rating : 24V DC, 25mA

Contact Resistance : (a) 100mΩ max. (initial)  
(b) 200mΩ (final – after test)

Insulation Resistance : 100MΩ min. at 250V DC

Voltage Proof : 250V AC for 1 minute

## Material

Base : UL 94V-0 High-temp Thermoplastic

Colour : Black

Actuator : UL 94V-0 High-temp Thermoplastic

Colour : White

Contact : Alloy Copper with Gold Plated

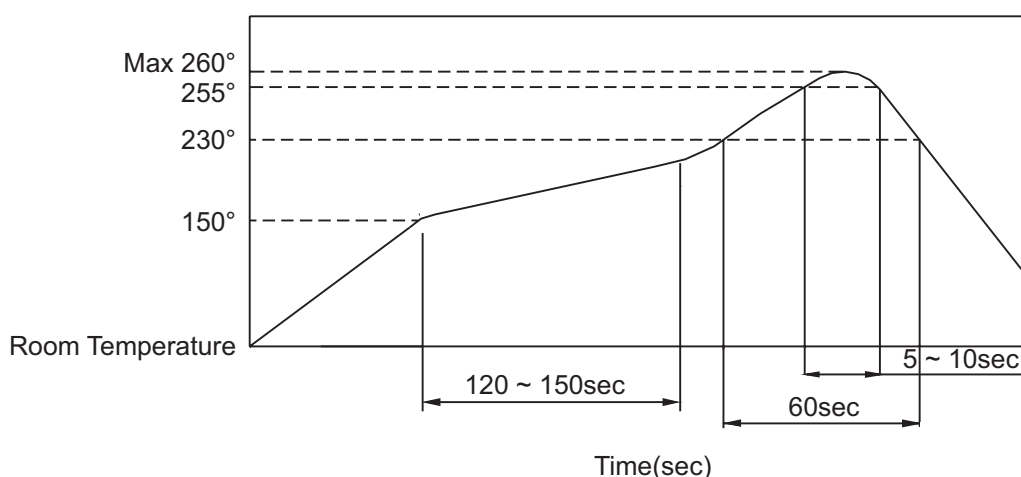
Terminal : Brass with Gold Plated

Cover : Stainless Steel

Seal : Silicone Rubber

Colour : Red

Spring Plate : Stainless Steel



## Soldering process

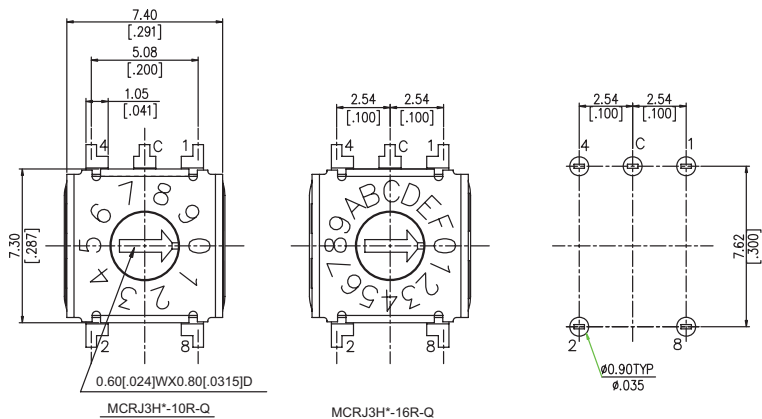
Hand Soldering : Use a soldering iron of 30 watts, controlled at (350°C) approximately max 5 seconds.

Wave Soldering : Recommended temperature at 500°F (260°C) max. 5 seconds. (For through hole type).

Reflow Soldering : When applying reflow soldering, the peak temperature of the reflow oven should be set to 260°C max.

## Dimensions

### MCRJH3 Series



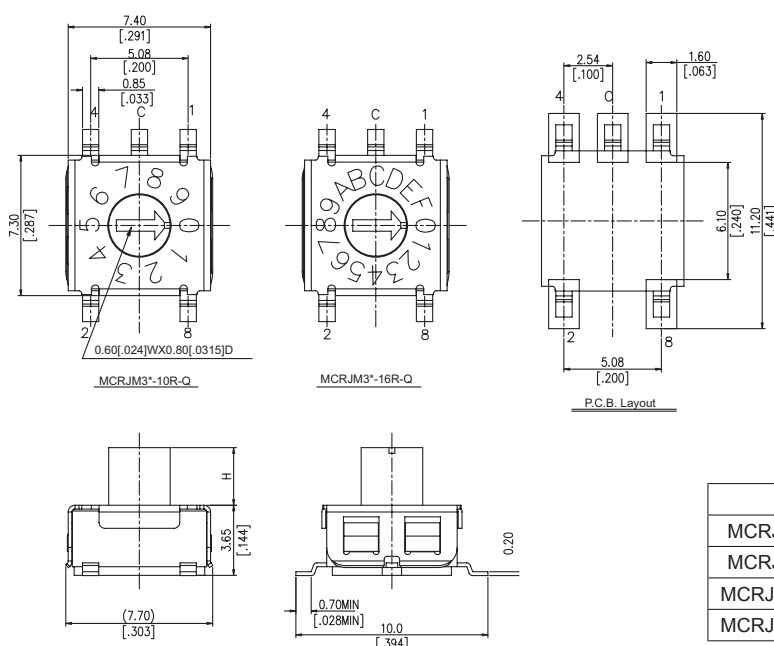
### Circuit Chart

		CODE			
TYPE	POSITION	1	2	4	8
	□□R				
10 STEP	0	●	●	●	●
	1	○	●	●	●
	2	●	○	●	●
	3	○	○	●	●
	4	●	●	○	●
	5	○	●	○	●
	6	●	○	○	●
	7	○	○	○	●
	8	●	●	●	○
	9	○	●	●	○
16 STEP	A	●	○	●	○
	B	○	○	●	○
	C	●	●	○	○
	D	○	●	○	○
	E	●	○	○	○
	F	○	○	○	○

General Tolerance :  $\pm 0.2\text{mm}$

Name	H
MCRJH3-10R-Q	0
MCRJH3-16R-Q	
MCRJH3H-10R-Q	3.00 [.1181]
MCRJH3H-16R-Q	

### MCRJM3 Series



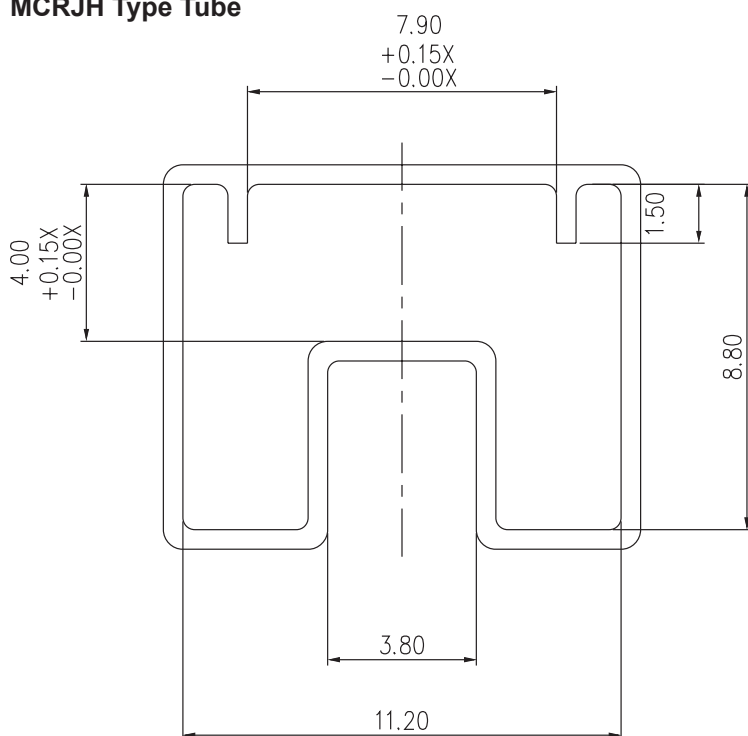
### Circuit Chart

		CODE			
TYPE	POSITION	1	2	4	8
	□□R				
10 STEP	0	●	●	●	●
	1	○	●	●	●
	2	●	○	●	●
	3	○	○	●	●
	4	●	●	○	●
	5	○	●	○	●
	6	●	○	○	●
	7	○	○	○	●
	8	●	●	●	○
	9	○	●	●	○
16 STEP	A	●	○	●	○
	B	○	○	●	○
	C	●	●	○	○
	D	○	●	○	○
	E	●	○	○	○
	F	○	○	○	○

General Tolerance :  $\pm 0.2\text{mm}$

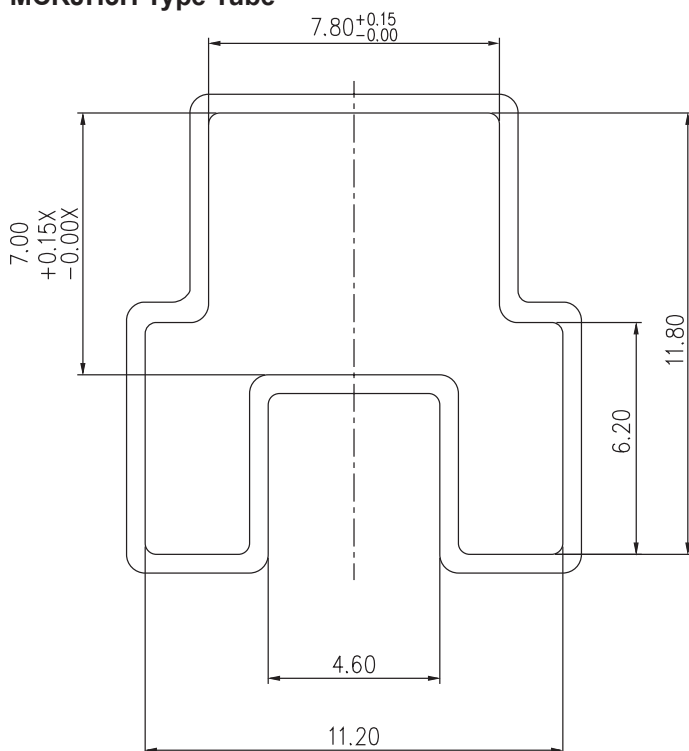
Name	H
MCRJM3-10R-Q	0
MCRJM3-16R-Q	
MCRJM3H-10R-Q	3.00 [.1181]
MCRJM3H-16R-Q	

## MCRJH Type Tube



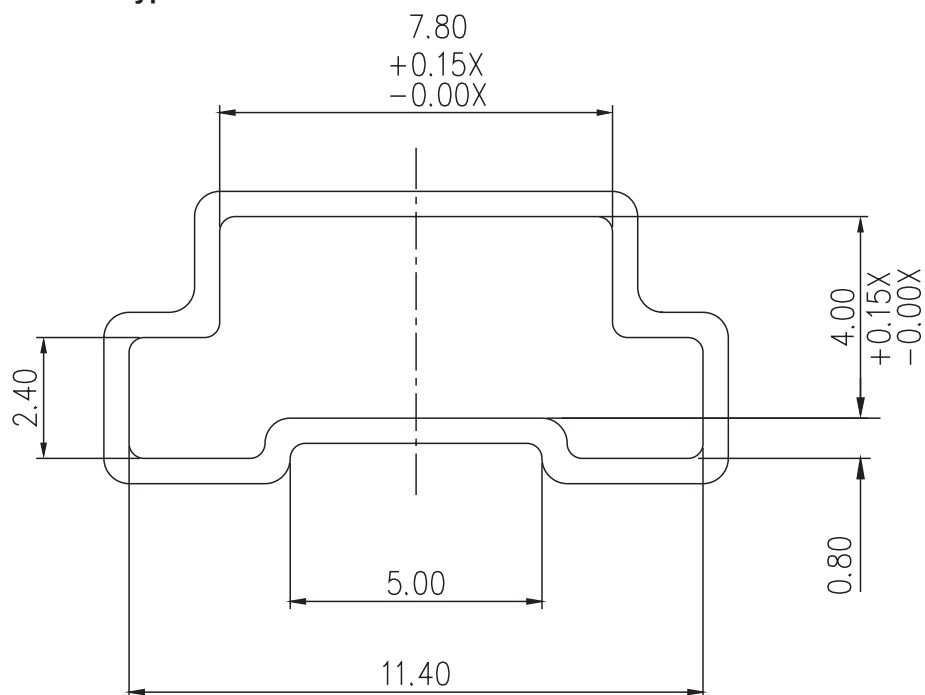
General Tolerance :  $\pm 0.2\text{mm}$

## MCRJH3H Type Tube



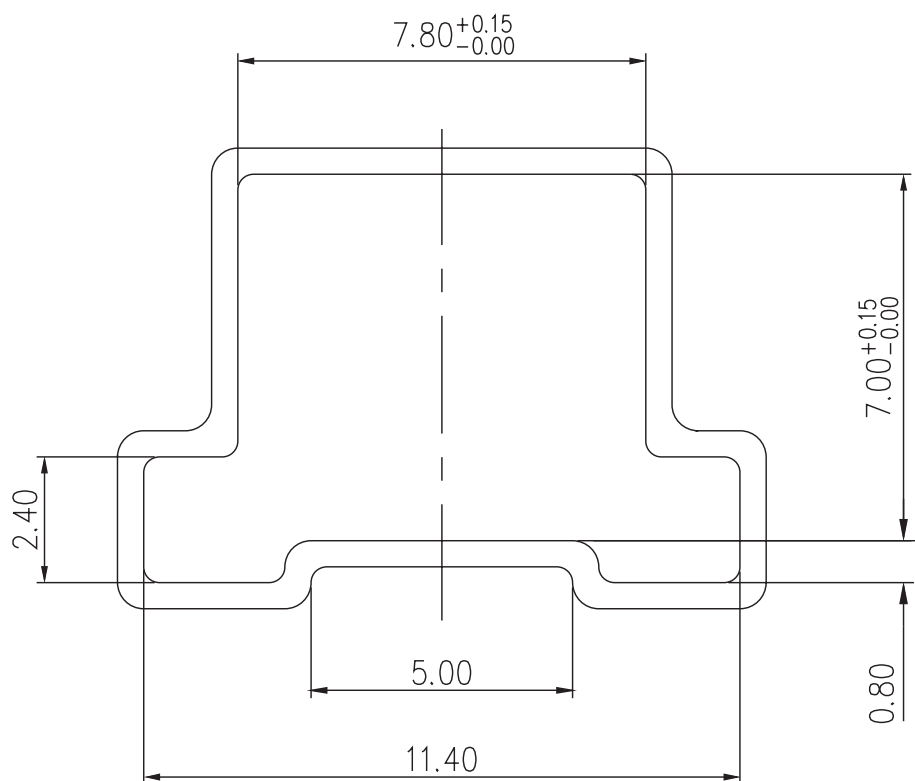
General Tolerance :  $\pm 0.2\text{mm}$

## MCRJM Type Tube



General Tolerance :  $\pm 0.2\text{mm}$

## MCRJM3H Type Tube



General Tolerance :  $\pm 0.2\text{mm}$

## Part Number Table

Description	Part Number
Switch, Rotary, SMD, 7×7, 10 POS, 3×2	MCRJM3-10R-Q
Switch, Rotary, SMD, 7×7, 16 POS, 3×2	MCRJM3-16R-Q
Switch, Rotary, SMD, 7×7, 10 POS, 3×2	MCRJM3H-10R-Q
Switch, Rotary, SMD, 7×7, 16 POS, 3×2	MCRJM3H-16R-Q
Switch, Rotary, THT, 7×7, 10 POS, 3×2	MCRJH3-10R-Q
Switch, Rotary, THT, 7×7, 16 POS, 3×2	MCRJH3-16R-Q
Switch, Rotary, THT, 7×7, 10 POS, 3×2	MCRJH3H-10R-Q
Switch, Rotary, THT, 7×7, 16 POS, 3×2	MCRJH3H-16R-Q

**Important Notice :** This data sheet and its contents (the "Information") belong to the members of the Premier Farnell group of companies (the "Group") or are licensed to it. No licence is granted for the use of it other than for information purposes in connection with the products to which it relates. No licence of any intellectual property rights is granted. The Information is subject to change without notice and replaces all data sheets previously supplied. The Information supplied is believed to be accurate but the Group assumes no responsibility for its accuracy or completeness, any error in or omission from it or for any use made of it. Users of this data sheet should check for themselves the Information and the suitability of the products for their purpose and not make any assumptions based on information included or omitted. Liability for loss or damage resulting from any reliance on the Information or use of it (including liability resulting from negligence or where the Group was aware of the possibility of such loss or damage arising) is excluded. This will not operate to limit or restrict the Group's liability for death or personal injury resulting from its negligence. Multicomp is the registered trademark of the Group. © Premier Farnell plc 2012.