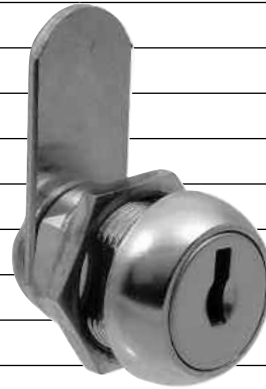
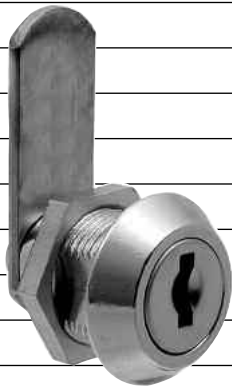
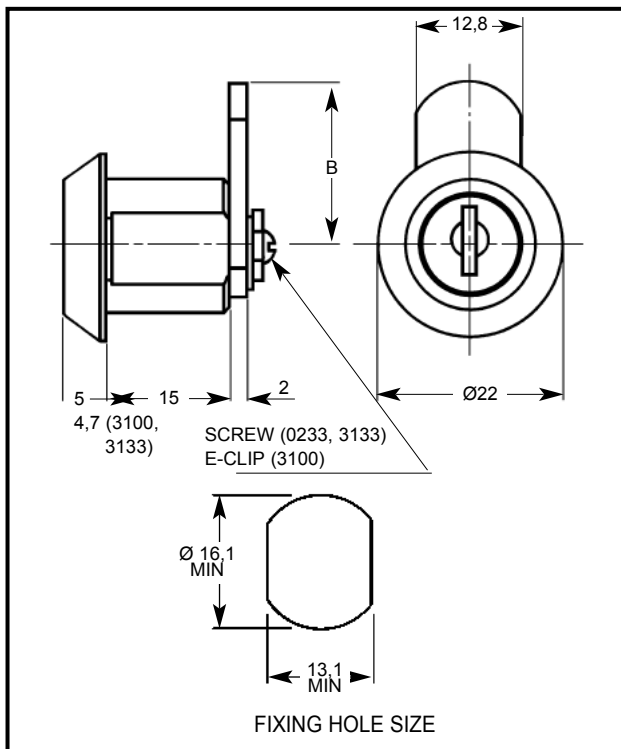


# Camlock 15mm and 16mm



## 0233/3100/3133



### PRODUCT REFERENCE NUMBERS

KEY SERIES	COMBINATIONS	NUT FIXED HOUSING	HORSESHOE CLIP FIXING
800	100	0233	0238
31 M	500	3100	-
31 M	500	3133	-

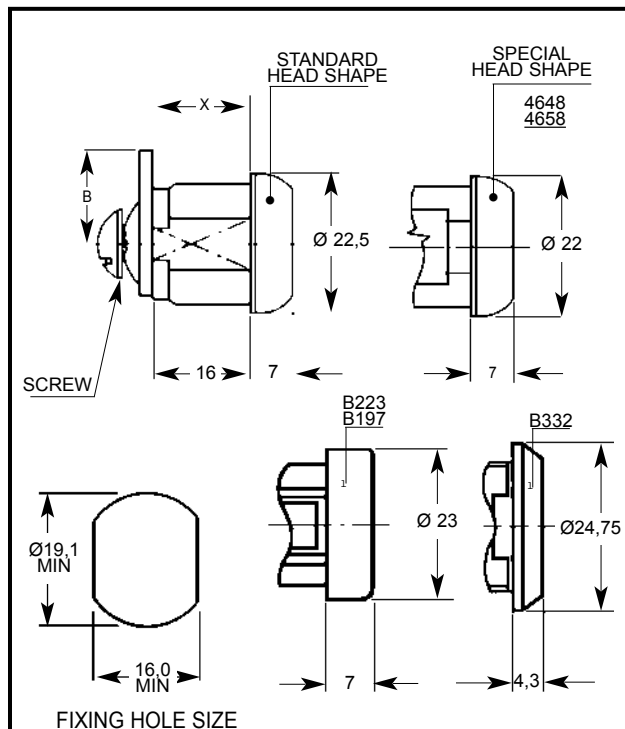
**MAXIMUM PANEL THICKNESS:** NUT FIXING 9.5mm, HORSESHOE CLIP FIXING 11mm ACROSS FLATS, 9.5mm ACROSS ROUNDS.

**M = MASTER KEY SYSTEM:** SUPPLIED TO ORDER ONLY

**STANDARD MOVEMENTS:** 1, 2, 3, 4, 8, 9 (0233, 0238)  
1, 2, 3, 4 (3100, 3133)

**STANDARD FINISH:** BRIGHT CHROME

## 1332



### PRODUCT REFERENCE NUMBERS

KEY SERIES	COMBINATIONS	NUT FIXED HOUSING	HORSESHOE CLIP FIXING
<b>STANDARD VERSION</b>			
92 M	200	1332 (B332)	1333
95-97 M	2000	1432	1433
92 M	200	(B223)	(B197)
<b>SHUTTERED VERSION</b>			
92 M	200	1348	1358
89	200	(4648)	(4658)

**M = MASTER KEY SYSTEM:** SUPPLIED TO ORDER ONLY

**STANDARD MOVEMENTS:** 1, 2, 3, 4, 5, 6, 7

**STANDARD FINISH:** BRIGHT CHROME

REF. No.s IN ( ) APPLY TO LOCKS WITH SPECIAL HEADS (SEE DRAWING)

THE BARREL CAN BE PASSIVATED AND GREASED IF REQUIRED TO PROVIDE GREATER PROTECTION WHEN LOCK IS USED IN OUTSIDE APPLICATIONS

## LOWE & FLETCHER LTD

MOORCROFT DRIVE, WEDNESBURY, WEST MIDLANDS, ENGLAND WS10 7DE.

TELEPHONE: 0121 505 0400. FAX: 0121 505 0420. E-MAIL: sales@lowe-and-fletcher.co.uk WEB SITE: www.lowe-and-fletcher.co.uk