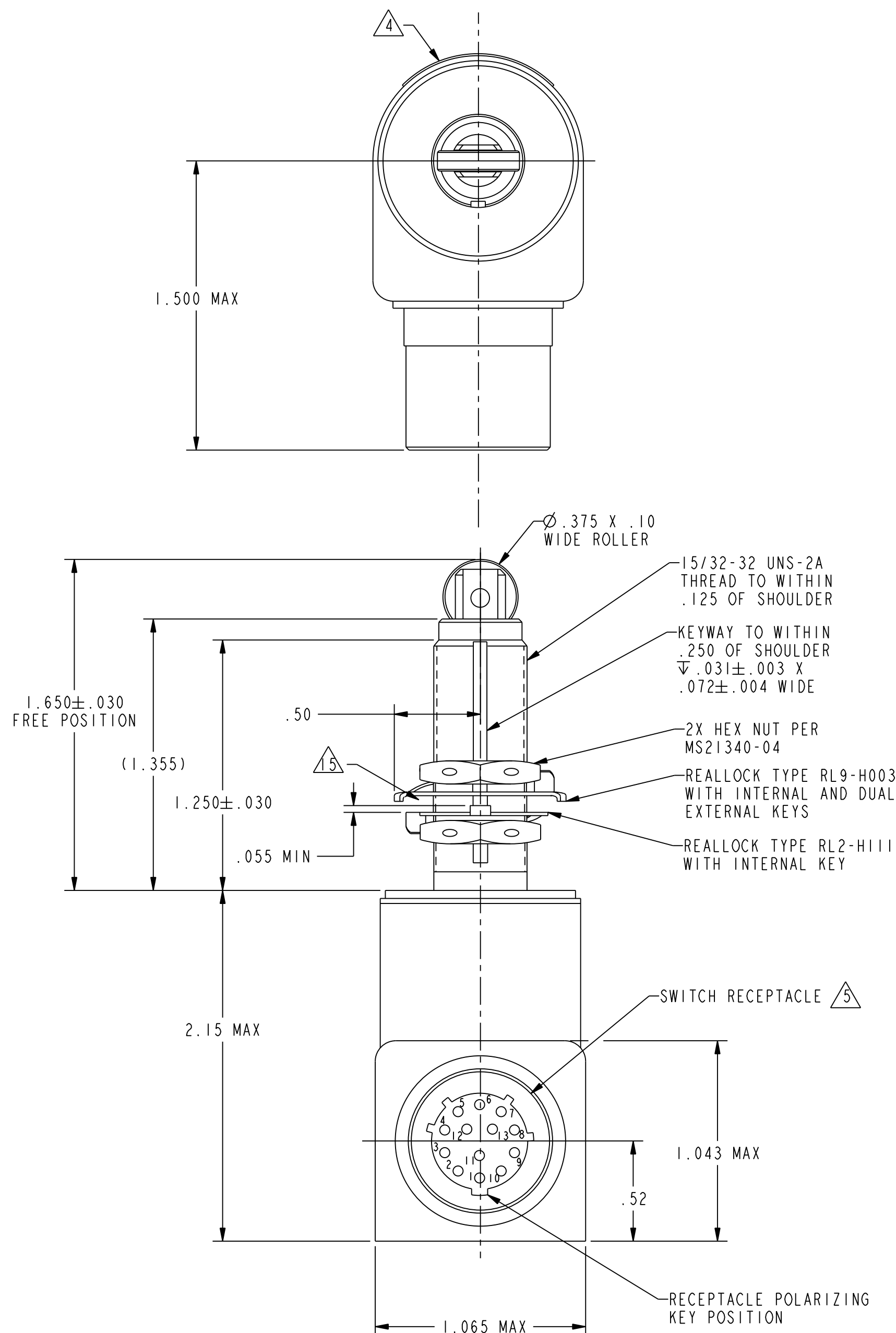


GENERAL HS APPLICATION NOTES:

- 1 - INITIAL OPERATION OF THE SWITCH WILL OCCUR WITHIN THE PRETRAVEL SPECIFICATION AND RELEASE PER THE CLICK DISTANCE SPECIFICATION. CLICK DISTANCE IS THE DISTANCE THE PLUNGER RETURNS FROM THE DOWNWARD STROKE TO THE POINT OF CIRCUIT TRANSFER.
- 2 - INSTALLATION OF THE SWITCH SHOULD DEPRESS THE PLUNGER A MINIMUM OF THE SUM OF THE PRETRAVEL AND THE CLICK DISTANCE. IF THE PLUNGER TRAVEL IS LESS THAN THE SUM, THE CLICK DISTANCE WILL BE EQUAL TO PLUNGER TRAVEL MINUS THE PRETRAVEL MINUS APPROXIMATELY 0.010 INCHES.
- 3 - THE SWITCH WILL SELF ADJUST TO THE PROPER RELATIONSHIP WITH THE ACTUATOR UPON COMPLETION OF THE FIRST CYCLE. THIS RELATIONSHIP WILL REMAIN CONSTANT UNTIL THE ACTUATOR HAS A GROSS CHANGE IN DISPLACEMENT. THE SWITCH MAY THEN BE REINSTALLED TO THE NEW OR OLD ACTUATOR DISPLACEMENT AND ONCE AGAIN IT WILL SELF ADJUST TO THE PROPER RELATIONSHIP.

NOTES:

- NOTES:
- 1 - COINCIDENCE OF OPERATING AND RELEASING POINTS: .010 OF PLUNGER TRAVEL
 - 2 - CORROSION RESISTANT ENCLOSURE, PLUNGER, BUSHING, ROLLER AND ROLLER GUIDE
 - 3 - SWITCH SEALED PER MIL-PRF-8805 SYMBOL 4
 - 4 - CIRCUIT DIAGRAM, CATALOG LISTING, DATE CODE & FED. MFG. CODE ON NAMEPLATE
 - 5 - RECEPTACLE D38999/25YB35PN MATES WITH D38999/26MB35SN
 - 6 - TEMPERATURE: MECHANICAL LIFE: -67°F TO +236°F
ELECTRICAL LIFE -67°F TO +185°F
 - 7 - SHOCK QUALIFIED TO 100g
 - 8 - RANDOM VIBRATION PER ML SERIES SWITCH
 - 9 - ICING QUALIFIED PER MIL-PRF-8805
 - 10 - MINIMUM ELECTRICAL LIFE 25,000 CYCLES @ RATED LOAD
 - 11 - MINIMUM MECHANICAL ENDURANCE: 35,000 CYCLES
 - 12 - QUALIFIED FOR SAND AND DUST PER MIL-STD-810
 - 13 - QUALIFIED FOR HUMIDITY PER MIL-STD-810
 - 14 - QUALIFIED TO 500 HOURS CONTINUOUS EXPOSURE TO SALT FOG PER MIL-STD-810
 - 15 - MOUNTING PANEL THICKNESS: .120 MIN
 - 16 - ORIGINAL DESIGN ACTIVITY CAGE CODE 60198
SAINT SWITCH INC.
ST. CHARLES, IL 60174
(DESIGN AND PRODUCTION RIGHTS OF THIS PRODUCT PURCHASED BY HONEYWELL
AS OF JUNE 1999)



CHARACTERISTICS		ELECTRICAL DATA				
OPERATING FORCE-----	6-30 LB	CONTACT ARRANGEMENT 3X S P N O				
FULL OVERTRAVEL FORCE-----	30 LBS MAX	LOAD (AMPS)	28 VDC			
RELEASE FORCE-----	4 LBS MIN		SEA LEVEL		50,000 FT	
PRETRAVEL-----	.040 MAX		SILVER	GOLD	SILVER	GOLD
CLICK DISTANCE-----	.062±.015					
TOTAL TRAVEL-----	.250 MIN	RES	7	.5	7	.5
		IND	4	.25	2.5	.25

ANSI Y14.5M-1982 APPLICABLE

THIS DRAWING COVERS A PROPRIETARY ITEM AND IS THE PROPERTY OF MICRO SWITCH, A DIVISION OF HONEYWELL. THIS DRAWING IS NOT TO BE COPIED OR USED WITHOUT THE APPROVAL OF MICRO SWITCH.

MICRO SWITCH
a Honeywell Division

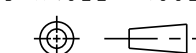
16 FEB MEG CODE 91938

CATALOG LISTING

SWITCH - ENCLOSED

HS-1073

THIRD ANGLE PROJECTION



SCALE	FULL
-------	------

DO NOT SCALE PRINT

UNLESS OTHERWISE SPECIFIED
TOLERANCES ARE

ONE PLACE (.0) $\pm .030$

TWO PLACES (.00) $\pm .015$

TWO PLACES	(.00)	2.010
THREE PLACES	(.000)	+ .005

THREE PLACES (1.000) = 1.000
ANGLES +

WEIGHT

Mouser Electronics

Authorized Distributor

Click to View Pricing, Inventory, Delivery & Lifecycle Information:

[Honeywell:](#)

[HS-1073](#)