

Bussmann series CD Industrial HRC Fuse Links



Product description

Eaton's Bussmann series range of British Standard fuse links size B1 is specifically designed for the protection of general industrial applications e.g. power distribution, cable protection, motor protection.

Standard features

- Good peak let-through current limitation
- 1:1:6 Selective coordination ratio between "minor" and "major" fuse
- gG characteristics for cable protection and gM for motor protection applications
- Power loss values well within the limits of IEC 60269-2

Catalogue symbol:

- CD(Amps)

Technical data:

- Rated voltage: 500 V a.c. / 415 V a.c.
- Rated current: 80 to 100 A
- Breaking capacity: 80 kA
- Breaking range and utilisation category: gG and gM
- Size: B1

Standards/approvals:

- BS88-2
- IEC 60269-2
- Suitable for use in RoHS compliant applications

Fuse holder (sold separately)

- RS200H

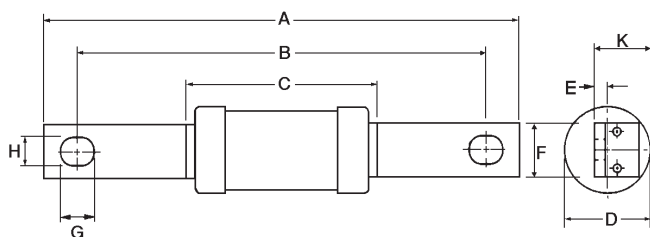
Packaging:

- MOQ 10

Table 1. Technical data

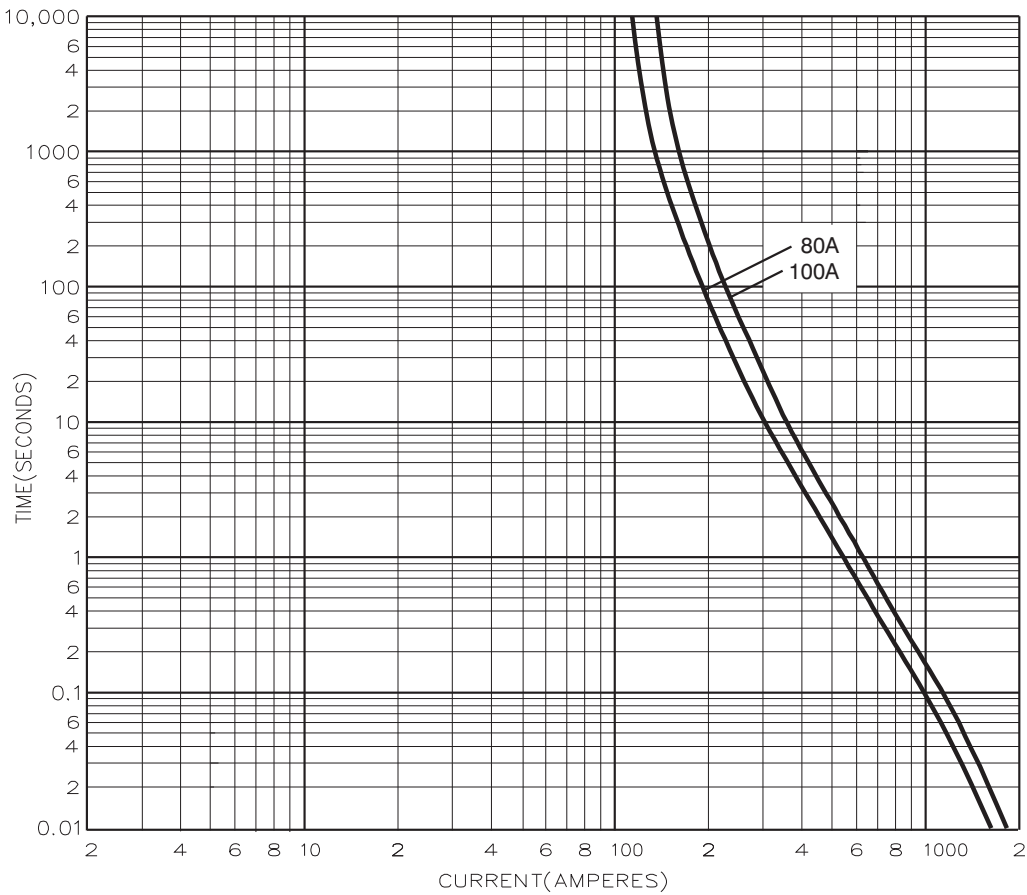
| Part number | Voltage | Current rating (amps) | Energy integrals I ² t (A ² S) | | Watts loss W | Product class | Weight |
|-------------|------------|-----------------------|--|----------------|--------------|---------------|--------|
| | | | Pre-arcing | Total at 415 V | | | |
| CD80 | 500 V a.c. | 80 | 13,000 | 35,200 | 7.2 | gG | 75g |
| CD100 | 500 V a.c. | 100 | 25,000 | 76,500 | 8.5 | gG | 75g |
| CD100M125 | 415 V a.c. | 100M125 | 57,000 | 150,000 | 11 | gM | 105g |
| CD100M160 | 415 V a.c. | 100M160 | 72,500 | 190,000 | 13 | gM | 105g |
| CD100M200 | 415 V a.c. | 100M200 | 120,000 | 290,000 | 14 | gM | 115g |

Dimensions - mm

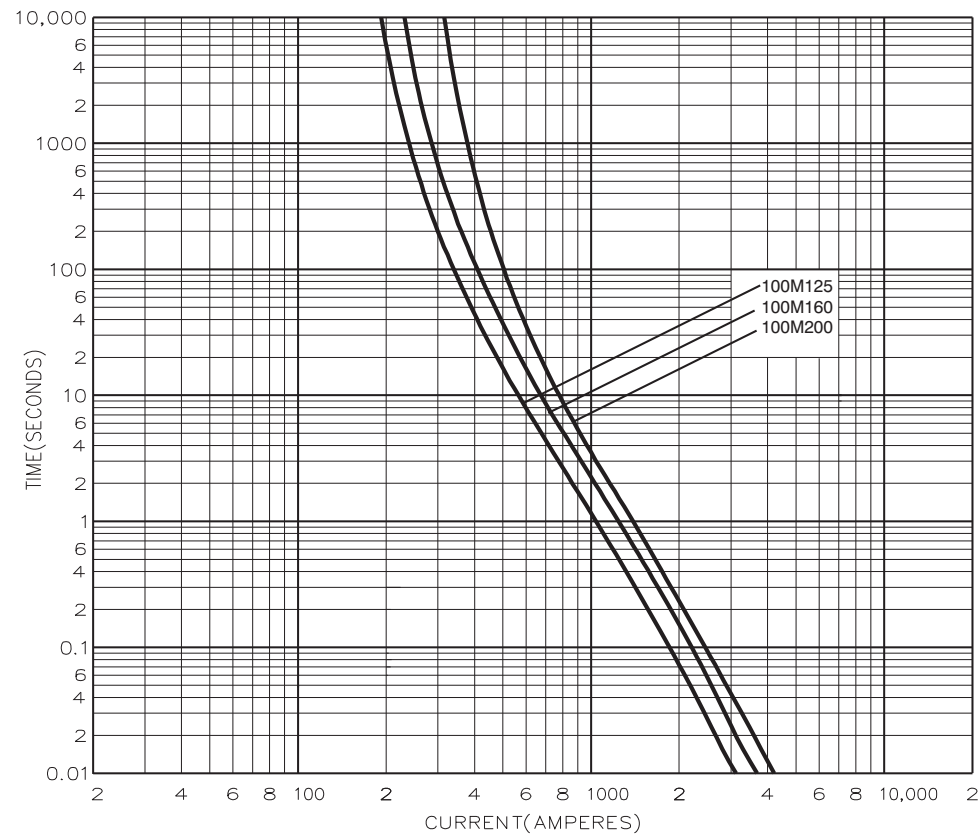


| Catalogue numbers | A | B | C | D | E | F | G | H | K |
|-------------------|-----|-----|------|----|-----|------|------|-----|------|
| CD80-100 | 126 | 111 | 58.5 | 21 | 3.2 | 14.3 | 11.1 | 8.7 | 19.5 |
| CD100M125-160 | 126 | 111 | 58.5 | 26 | 3.2 | 14.3 | 11.1 | 8.7 | 22 |
| CD100M200 | 136 | 111 | 47 | 31 | 3.2 | 19 | 12.5 | 8.7 | 22.5 |

Time current curve - CD80 and CD100



Time current curve - CD100M



Changes to the products, to the information contained in this document, and to prices are reserved; so are errors and omissions. Only order confirmations and technical documentation by Eaton is binding. Photos and pictures also do not warrant a specific layout or functionality. Their use in whatever form is subject to prior approval by Eaton. The same applies to Trademarks (especially Eaton, Moeller, and Cutler-Hammer). The Terms and Conditions of Eaton apply, as referenced on Eaton Internet pages and Eaton order confirmations.

Eaton
EMEA Headquarters
Route de la Longeraie 7
1110 Morges, Switzerland

Eaton Electrical Products Limited
Melton Road
Burton-on-the-Wolds
Leicestershire, LE12 5TH
United Kingdom

© 2017 Eaton
All Rights Reserved
PDF Only
Publication No. 4116
October 2017