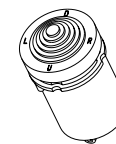


NOTES: (C)

1. DRAWING TO BE INTERPRETED IN ACCORDANCE WITH THE CURRENT REVISION OF ASME Y14.5M.
2. THIS PART/PRODUCT IS TO BE MANUFACTURED WITH THE APPLICABLE REGULATIONS OF EC DIRECTIVES 2002/95/EC AND 2002/96/EC, RESTRICTION OF THE USE OF HAZARDOUS SUBSTANCES IN ELECTRICAL AND ELECTRONIC EQUIPMENT (ROHS) AND WASTE ELECTRICAL AND ELECTRONIC EQUIPMENT (WEEE).
3. TERMINAL IDENTIFICATION SHOWN FOR REFERENCE ONLY. (SWITCH IS NOT MARKED WITH TERMINAL IDENTIFICATION.)

PART NUMBER CODE

T 4 - T M E 3 3



SCALE 1:1

| T4-TME33_ | | | |
|-----------|--------|-----------|-----|
| REV | OCN # | DATE | APR |
| A | 020710 | 01 DEC 03 | DGK |
| B | 024196 | 21 SEP 04 | DGK |
| C | 049072 | 29 MAY 09 | RAS |

SWITCH CHARACTERISTICS

ELECTRICAL

| ELECTRICAL RATING: SEA LEVEL | |
|------------------------------|-----------|
| LOAD | 28VDC |
| RESISTIVE | 2 AMPS |
| INDUCTIVE | 1 AMPS |
| DWV | 1050 VRMS |

LOW LEVEL RATING: 10 MILLIAMPERES AT 30 MILLIVOLTS MAX. D.C. OR PEAK A.C. PER MIL-PRF-8805.

ELECTRICAL ENDURANCE: 100,000 MIN. (MILITARY)

MECHANICAL

MECHANICAL ENDURANCE: 500,000 MIN.
 PRETRAVEL: 9.5° MAX.
 OVER TRAVEL: 1.5° MIN.
 RETURN POINT: 4° MIN.
 OPERATING FORCE: .75±.25 LBS.
 BUTTON STRENGTH: 10 LBS. MIN. PULL
 CONTACT MADE IN THE DIRECTION OF BUTTON TRAVEL.

PHYSICAL

TEMPERATURE RANGE: -55°C TO +85°C
 SEAL: WATER RESISTANT PER MIL-STD-883F, METHOD 506.4, PROCEDURE 3 (DRIP).
 BUTTON: NYLON. CHOICE OF COLOR (SEE PART NUMBER CODE)
 CASE: GLASS FILLED POLYESTER, BLACK

MARKING

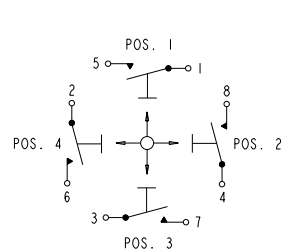
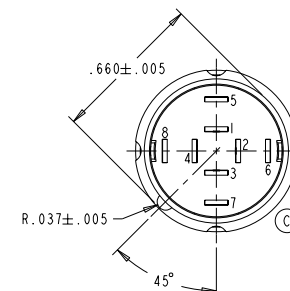
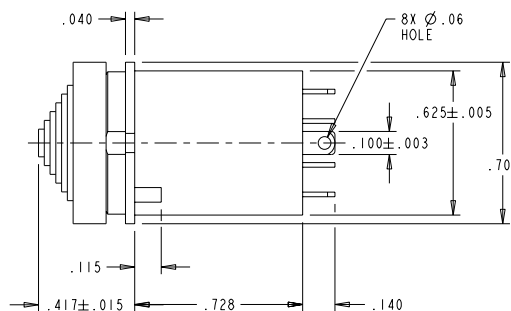
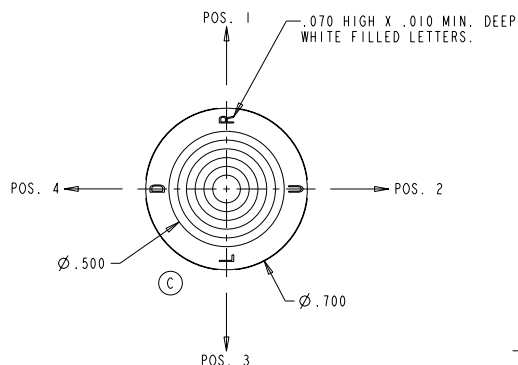
OTTO 21649
 T4-TME33_ (SEE PART NUMBER CODE)
 DATE CODE (YYWW)

CURRENT RATING

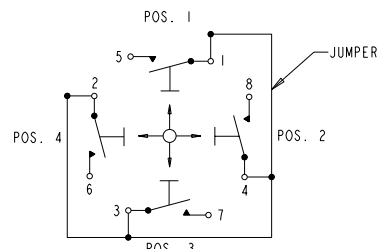
1. STANDARD
2. LOW LEVEL
3. STANDARD WITH INTERNAL JUMPER
4. LOW LEVEL WITH INTERNAL JUMPER

BUTTON COLOR

1. RED
2. BLACK
8. GRAY



(C) SPST-NO
4 WAY
SCHEMATIC



(C) 4 WAY WITH COMMON JUMPER
SCHEMATIC



UNLESS OTHERWISE SPECIFIED:
 DIMENSIONS ARE IN INCHES.
 TOLERANCES:
 .XX ±.03
 .XXX ±.010
 ANGLES ±2°
 DO NOT SCALE

OTTO
 CARPENTERSVILLE, ILLINOIS USA

THIS DOCUMENT IS THE CONFIDENTIAL PROPERTY OF OTTO ENGINEERING, INC.. IT IS NOT TO BE USED IN ANY WAY DETRIMENTAL TO THE INTERESTS OF OTTO ENGINEERING, INC..

DESCRIPTION

T4-T, SWITCH, TACTILE MINI TRIM,
 4 WAY, LRUD HAT BUTTON

| DRWN. | JFC | SIZE | FSCM NO | DRAWING NO. | REV. |
|-------|-----|------|---------|-------------|------|
| CHKD. | JFC | B | 21649 | T4-TME33_ | C |
| APPD. | RTK | | | | |
| WT. | | | | | |

THIRD ANGLE PROJECTION

Scale 2:1 Sheet 1 OF 1

Mouser Electronics

Authorized Distributor

Click to View Pricing, Inventory, Delivery & Lifecycle Information:

OTTO:

[T4-TME3332](#) [T4-TME3312](#)