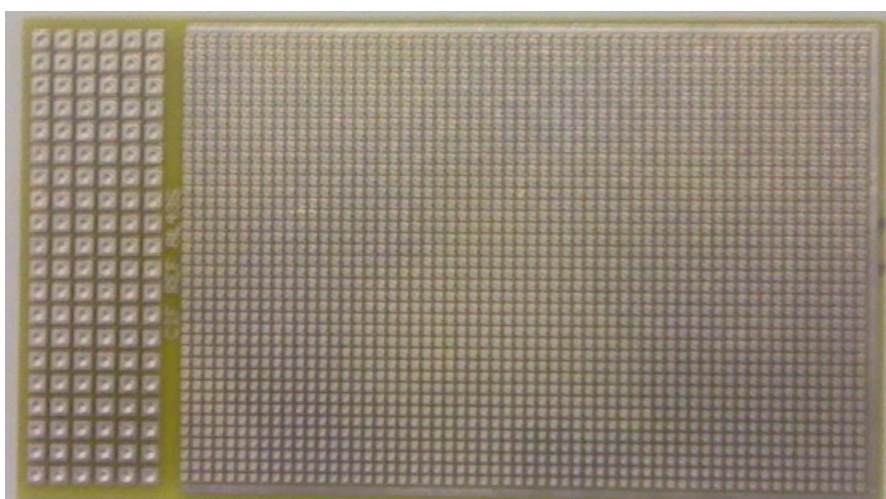




www.cif.fr

Test boards for SMD components 2 face FR4 0.70µm

AL435



This document contains manufacturer's information, protected through copyright. All rights reserved. This document can not be copied, reproduced or translated without written agreement from **C.I.F**

Information contained in this document can be modified without any prior notice

Characteristics

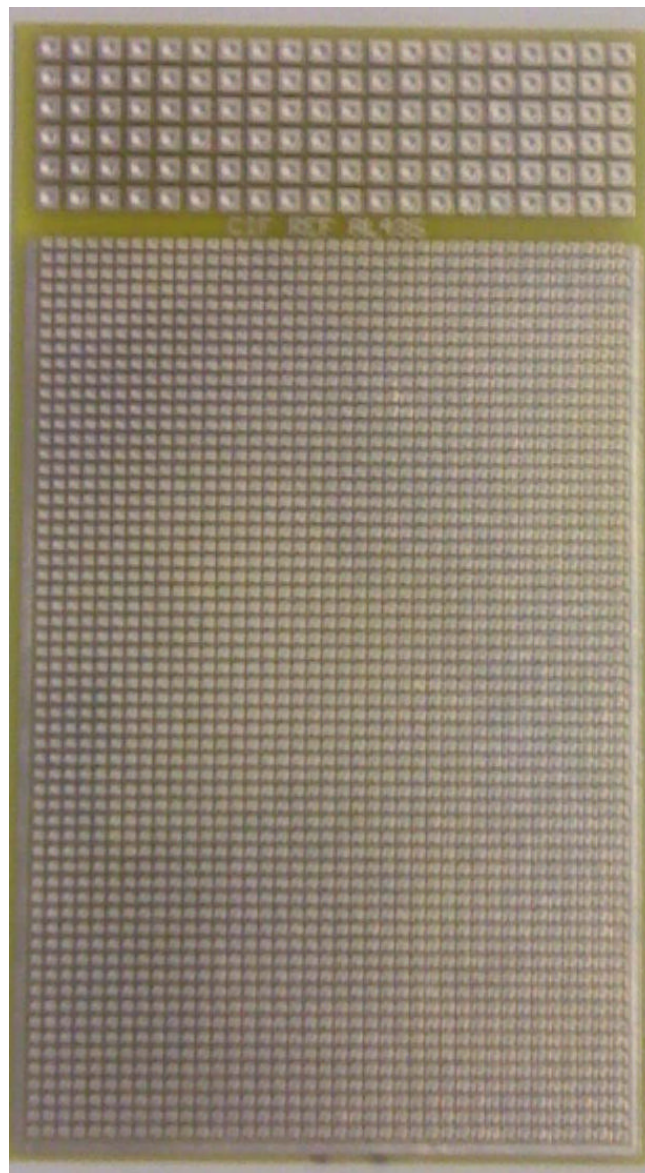
AL 435 - Epoxy thickness: 0,70 mm.

39 x 59 SMD pads 1 mm² drilled at 0,35 mm.

1,27 mm pitch.

6 rows at 2,54 mm pitch at the edge.

Holes fully plated



cif@cif.fr