

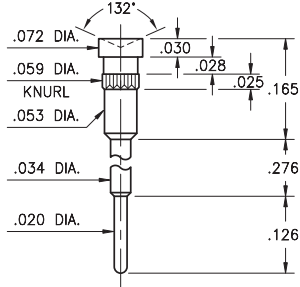
MALE PCB PINS

PRINTED CIRCUIT PINS

1958

1958-0-00-15-00-00-03-0

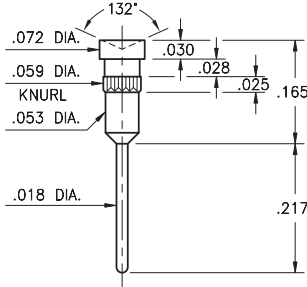
Concave face Target contact, solder Tail
Press-fit in .057 mounting hole



1960

1960-0-00-15-00-00-03-0

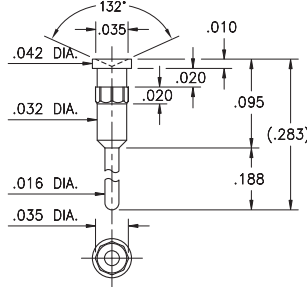
Concave face Target contact, solder Tail
Press-fit in .057 mounting hole



1831

1831-1-00-15-00-00-03-0

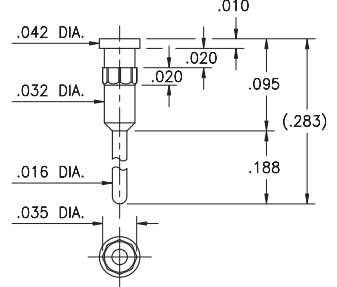
Concave face Target contact, solder Tail
Hex press-fit in .034 mounting hole



1931

1931-1-00-15-00-00-03-0

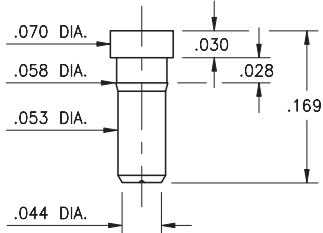
Flat face Target contact, solder Tail
Hex press-fit in .034 mounting hole



1953

1953-0-00-XX-00-00-03-0

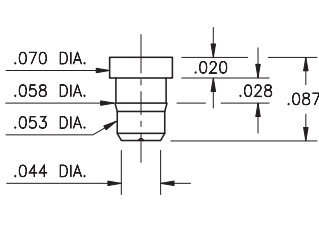
Flat face Target contact, surface mount
Press-fit in .056 mounting hole



1954

1954-0-00-XX-00-00-03-0

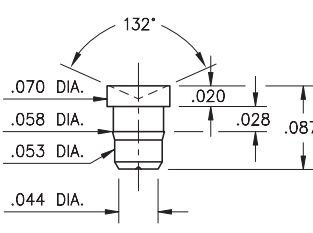
Flat face Target contact, surface mount
Press-fit in .056 mounting hole



1955

1955-0-00-15-00-00-03-0

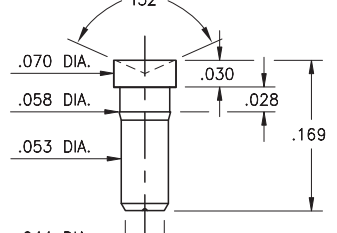
Concave face Target contact, surface mount
Press-fit in .056 mounting hole



1957

1957-0-00-15-00-00-03-0

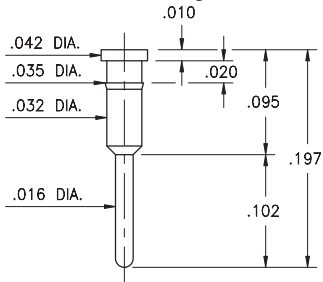
Concave face Target contact, surface mount
Press-fit in .056 mounting hole



1933

1933-0-00-XX-00-00-03-0

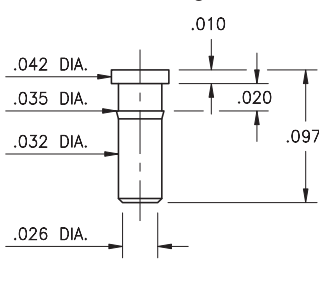
Flat face Target contact, solder Tail
Press-fit in .034 mounting hole



1935

1935-0-00-XX-00-00-03-0

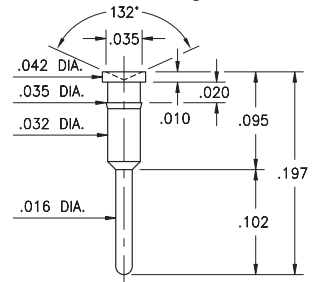
Flat face Target contact, surface mount
Press-fit in .034 mounting hole



1934

1934-0-00-15-00-00-03-0

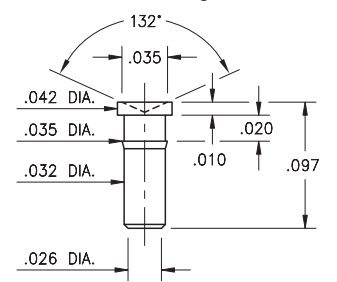
Concave face Target contact, solder Tail
Press-fit in .034 mounting hole



1936

1936-0-00-15-00-00-03-0

Concave face Target contact, surface mount
Press-fit in .034 mounting hole



SPECIFICATIONS:

Pin Material: Brass Alloy 360, 1/2 Hard
(Except where noted)

Dimensions: Inches

Tolerances On: Lengths: $\pm .005$
Diameters: $\pm .002$
Angles: $\pm 2^\circ$

RoHS-2
2011/65/EU

ORDER CODE: XXXX - 0 - 00 - XX - 00 - 00 - 03 - 0

BASIC PART #

SPECIFY PIN FINISH:

- 01 200 μ " TIN/LEAD OVER NICKEL
- ◆ 80 200 μ " TIN OVER NICKEL (RoHS)
- ◆ 15 10 μ " GOLD OVER NICKEL (RoHS)
- ◆ 21 20 μ " GOLD OVER NICKEL (RoHS)
- ◆ 34 50 μ " GOLD OVER NICKEL (RoHS)



Mill-Max Mfg. Corp. • 190 Pine Hollow Road, P.O. Box 300, Oyster Bay, NY 11771 • 516-922-6000 • Fax: 516-922-9253 • www.mill-max.com