

MICRO SWITCH

FREEPORT ILLINOIS, U.S.A
A DIVISION OF HONEYWELL
FED. MFG. CODE 91929

SWITCH - BASIC

CATALOG LISTING

IXE304

IXE304
PAGE 1 OF 1

M

DRAWING
NUMBER

ISSUE
23

REPLACES

RELEASE NO. PR-15151

CHECK

REVISIONS

A	PR-15151	
T	A	D
3	NOV 86	
B	C094282	
	DLM	
	3 MAR 99	

CHECK

5

KAG

CHECK

86

NOV

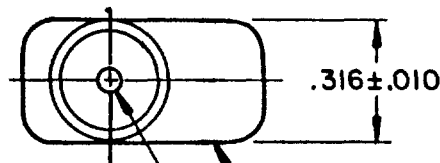
TAD

FORMTEK

FO-82848-A

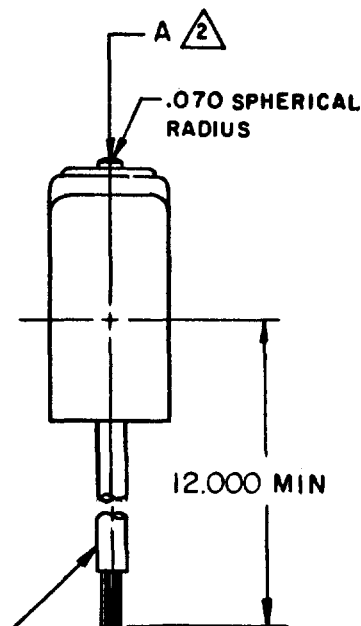
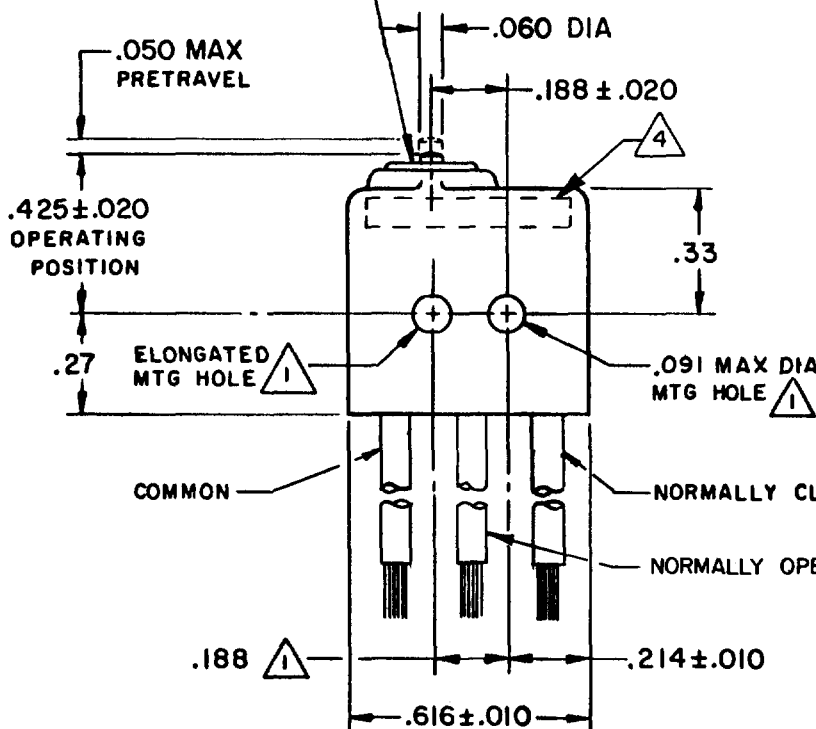
DRAWN

ELASTOMER PLUNGER SEAL



CORROSION RESISTANT TREATED METAL ENCLOSURE

CORROSION RESISTANT STEEL PLUNGER



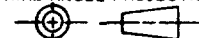
(3) NO. 22 WIRE LEAD PER
MIL-W-22759/9 EMBEDDED
IN EPOXY CASTING RESIN

NOTES

- 1 MOUNTING HOLES WILL ACCEPT .087 DIA PINS OR SCREWS ON .188 ± .002 CENTERS
 - 2 ACTUATION IN LINE WITH ARROW "A" IS RECOMMENDED
 - 3 WEIGHT OF SWITCH ONLY IS .16 OZ MAX. WEIGHT OF SWITCH WITH WIRE LEADS IS .55 OZ MAX
 - 4 YELLOW MARKING IS ON BOTH SIDES OF HOUSING TO IDENTIFY THAT THIS UNIT HAS GOLD CONTACTS
- 5 - CONTACT MATERIAL - 24K SOLID GOLD

THIS DRAWING COVERS A PROPRIETARY ITEM AND IS THE PROPERTY OF MICRO SWITCH, A DIVISION OF HONEYWELL. THIS DRAWING IS NOT TO BE COPIED OR USED WITHOUT THE APPROVAL OF MICRO SWITCH.

THIRD ANGLE PROJECTION



CHARACTERISTICS

OPERATING FORCE - - - - - 5-17 OZ
RELEASE FORCE - - - - - 4 OZ MIN
RELEASE TRAVEL - - - - - .004 MIN
DIFFERENTIAL TRAVEL - - - - .005 MAX
OVERTRAVEL - - - - - .007 MIN

ELECTRICAL DATA

CONTACT ARRANGEMENT
S P D T

28 VOLTS DC RATING

INDUCTIVE - - - - - SEA LEVEL - 1/2 AMP
50,000 FT - 1/2 AMP
RESISTIVE - - - - - SEA LEVEL - 1 AMP
50,000 FT - 1 AMP

SCALE 2 : 1

DO NOT SCALE PRINT

TOLERANCES

APPLY TO DESIGN UNITS. CONVERSIONS ARE ONLY FOR REFERENCE. UNLESS NOTED, TOLERANCES ARE 2

	DIM. in	TOL. in	DIM. mm	TOL. mm
NO PLACES	X	1/.04	X	0.254
ONE PLACE	X,X	0.4/.016	X,X	0.0127
TWO PLACES	X,X,X	0.157/.008	X,X,X	0.00508
THREE PLACES	X,X,X,X		X,X,X,X	
ANGLES				

DESIGN UNITS ☐ SI METRIC

US CUSTOMARY ☒

WEIGHT 3

Mouser Electronics

Authorized Distributor

Click to View Pricing, Inventory, Delivery & Lifecycle Information:

[Honeywell:](#)

[1XE304](#)