

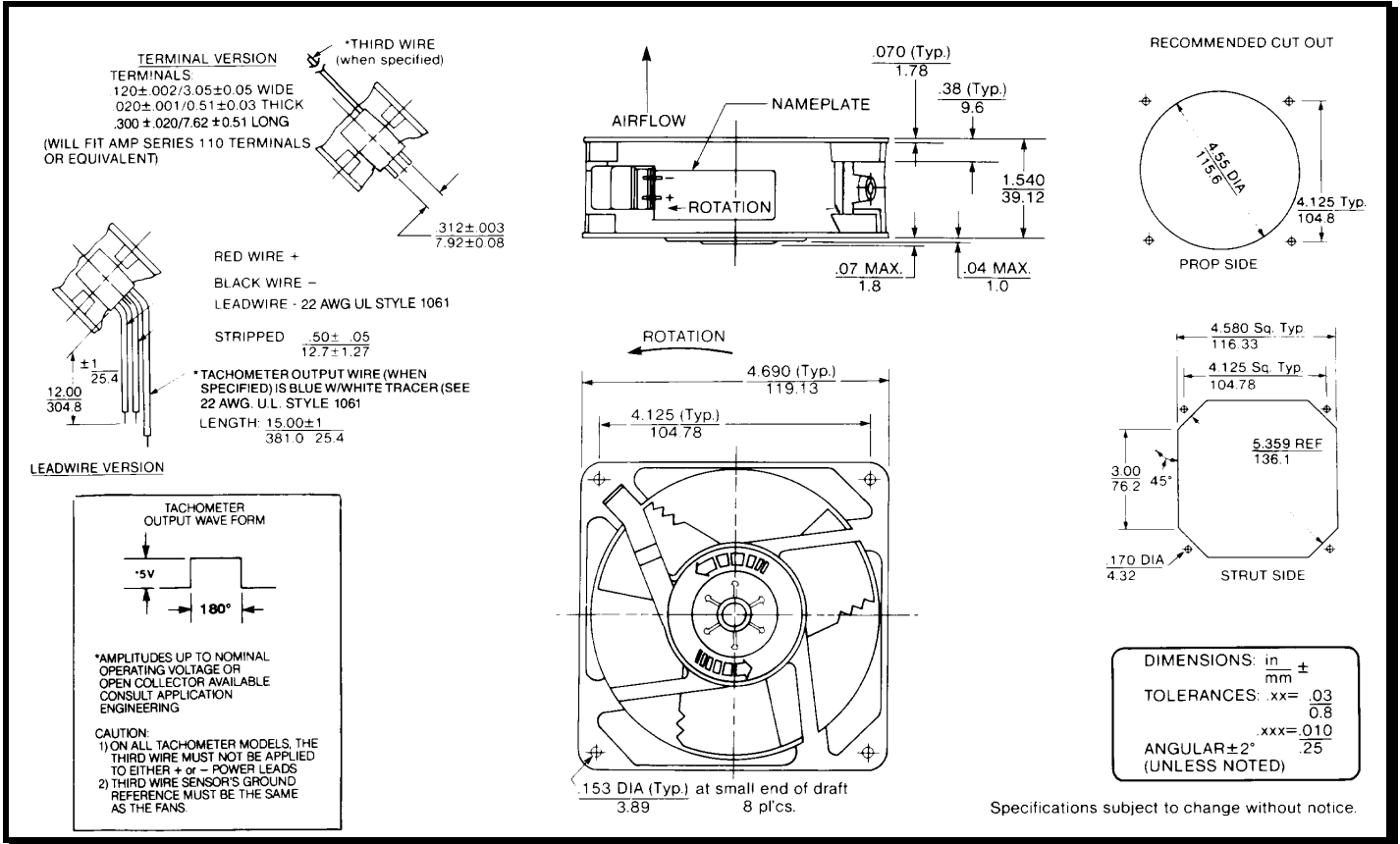
# SPECIFICATIONS

**Model Number:** MD24B5-E2  
**Part Number:** 039030

November 29, 2004



## Mechanical Drawing:



## Motor:

Nominal Voltage = 24 vdc  
 Operating Voltage Range = 12 - 28 vdc  
 Running Current = 0.250 amps  
 Locked Rotor Current = 0.750 amps  
 Running Power = 6.0 watts  
 Average Speed = 3100 rpm  
 Bearings = Ball  
 Air Flow = 110 CFM  
 Acoustic = 50.0 dBA

## Construction:

Venturi: Die-Cast Zinc Alloy, Black  
 Propeller: Plastic, Black, UL 94V-0

## Life Expectancy:

This fan is designed for continuous duty life of 83,000 hours at 40°C.

## Agency Approved:

UL, CUL, TUV

## Additional Features:

Brushless DC Motor  
 Electronic Locked Rotor Protected  
 Polarity Protected  
 Automatic Restart Capability  
 Operating Temperature: -10°C to 70°C  
 Storage Temperature: -40°C to 85°C  
 Environmental Type II coating

## Tachometer:

Output: 5 volt TTL  
 Isolated: No  
 Pulses per Rev.: 2

## Termination:

12" Lead wires, 22AWG, UL 1061  
 Red - Fan Power, (+)  
 Black - Fan Ground, (-)  
 Blue/White - Tachometer, (Output)