

Customer Information Sheet

DRAWING No.: M80-879XXXX

SHEET 2 OF 2

IF IN DOUBT - ASK

©

NOT TO SCALE

THIRD ANGLE PROJECTION

ALL DIMENSIONS IN mm

COMMERCIAL
ORDER CODE:**M80-879XXXX**TOTAL No. OF WAYS
02 - 07, 17, 22

FINISH

05 - GOLD
06 - TIN/LEAD
22 - SELECTIVE GOLD

BRITISH STANDARD

ORDER CODE: TO BS9525 F0033

B5743-1XX-M-T-XTOTAL No. OF WAYS
02 - 07, 17, 22

FINISH

0 - SELECTIVE GOLD
2 - GOLD

NOTES.

- 2-OFF STRAIN RELIEF STRAP M80-0030006 CAN BE ORDERED SEPARATELY IF REQUIRED.

SPECIFICATIONS:

MATERIAL:

MOULDING - GLASS-FILLED
POLYESTER UL94V-0

CONTACT - PHOSPHOR BRONZE

LATCH - BERYLLIUM COPPER

FINISH:

CONTACTS:

05 - 0.75µ GOLD
06 - 3.0µ 90/10 TIN/LEAD
22 - 0.75µ GOLD ON CONTACT AREA,
3.0µ 90/10 TIN/LEAD ON TAILS
LATCH - 1.25µ NICKEL

MECHANICAL:

DURABILITY - 500 OPERATIONS

PACKING:

TUBE

ELECTRICAL:

CURRENT RATING AT 25°C - 3.0A MAX
CURRENT RATING AT 85°C - 2.2A MAX

WORKING VOLTAGE - 120V AC/DC

VOLTAGE PROOF - 360V AC/DC

CONTACT RESISTANCE (INITIAL) -
20 MILLIOHMS MAXCONTACT RESISTANCE (AFTER
CONDITIONING) - 25 MILLIOHMS MAXINSULATION RESISTANCE (INITIAL) -
1000 MEGOHMS MININSULATION RESISTANCE (AFTER
CONDITIONING) - 100 MEGOHMS MIN

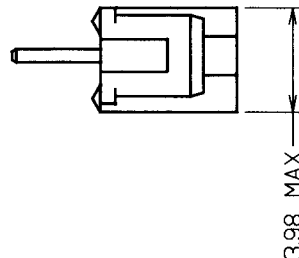
ENVIRONMENTAL:

TEMPERATURE RANGE - -55°C TO +125°C

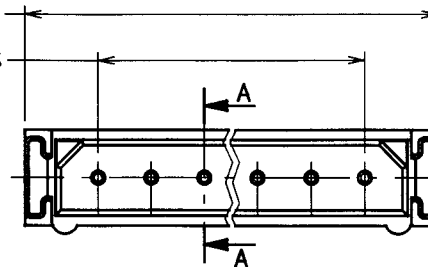
FOR COMPLETE SPECIFICATION, SEE COMPONENT SPECIFICATION C005XX (LATEST ISSUE)

2.00 x No. OF ROWS + 3.60 MAX

2.00 x No. OF PITCHES

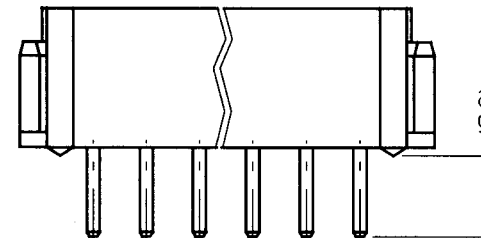


3.98 MAX



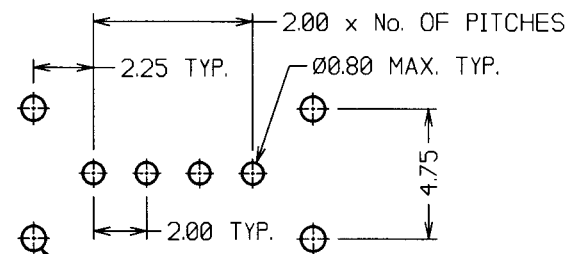
5.56 MAX

SECTION A-A



2.00 TYP.

0.50 TYP.

0.90 MIN. TYP.
STRAIN RELIEF STRAP HOLES (OPTIONAL)

RECOMMENDED PCB LAYOUT

JÄE	11	06.08.03	7549
NAME	ISS.	DATE	C/NOTE
APPROVED: <i>[Signature]</i>			
CHECKED: <i>[Signature]</i>			
DRAWN: W. J. BOURNE			
CUSTOMER REF.:			
ASSEMBLY DRG:			

HARWINHARWIN INC
U.S.A.TEL: (812) 542 2546
FAX: (812) 542 2541HARWIN PLC
U.K.TEL: 023 9237 0451
FAX: 023 9231 4590HARWIN PTE
SINGAPORETEL: 65 7794909
FAX: 65 7793868

THIS DRAWING AND ANY
INFORMATION OR DESCRIPTIVE
MATTER SET OUT HEREON ARE
CONFIDENTIAL AND COPYRIGHT
PROPERTY OF THE HARWIN
GROUP AND MUST NOT BE
DISCLOSED, LOANED, COPIED
OR USED FOR MANUFACTURING,
TENDERING OR FOR ANY
OTHER PURPOSE WITHOUT
THEIR WRITTEN PERMISSION

TOLERANCES

X. - ±1mm
X.X - ±0.25mm
X.XX - ±0.10mm
X.XXX - ±0.01mm
ANGLES - ±5°
UNLESS STATED

MATERIAL:

SEE ABOVE

FINISH:

SEE ABOVE

S/AREA:

mm²

TITLE: DATAMATE 2mm PITCH
VERTICAL PC TAIL SIL PLUG
ASSEMBLY - UNLATCHED

DRAWING NUMBER:

M80-879XXXXSHT
2 OF 2