

# Kraftform Micro Series



# Ever lost patience with precision screw connections?

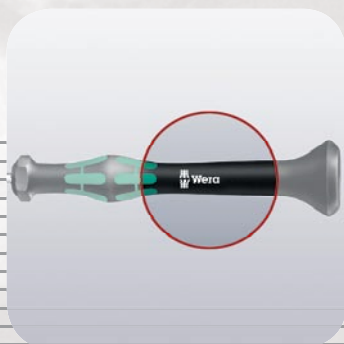
**Kraftform Micro is the ideal screwdriving partner for electronics or precision engineering applications.**

The highly precise Wera manufacturing quality is indispensable whenever minimum dimensions are concerned. The three-zone concept reduces fastening time and distinctly lowers the cost for each screw connection.

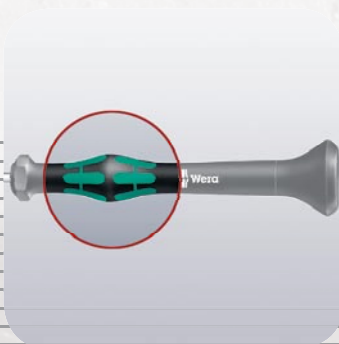




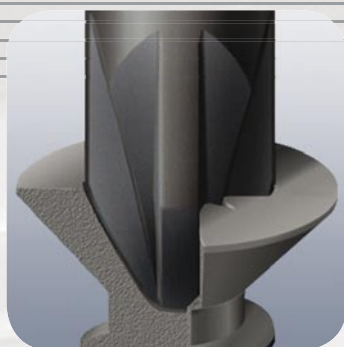
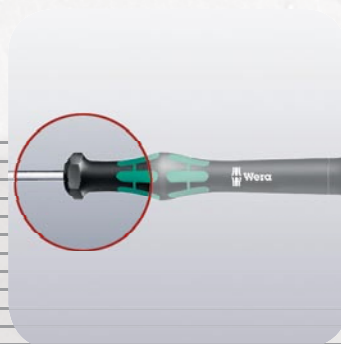
The fixed head and the fast-turning zone just below the head allow **rapid twisting**. This makes time-consuming grip adjustments, as required with other conventional precision screwdrivers, unnecessary.



The power zone has integrated soft zones near the blade tip to ensure **high torque transfer for loosening or tightening screws** without losing contact with the screw.



The precision zone directly above the blade gives the user a better feel **for the right rotation angle during fine adjustment work**.



The Wera Black Point tip, as well as a refined hardening process, ensure **long service life** and **enhanced corrosion protection**.



Multi-component screwdriver handle for **ergonomic working**.



Indispensable for many users, including electronics technicians, opticians, precision engineers, jewellers, EDP hardware fitters and model-makers.

# Kraftform Micro Series

## The superior screwdriver for electronics technicians

### 2035 Screwdriver for slotted screws for electronic applications



**Application:** Slotted screws

**Blade:** Round

**Design:** Chrome-plated, Black Point

**Handle:** Kraftform Micro with non-roll feature and rotating cap, multi-component

Code	mm	mm	mm	mm	mm	mm	mm	mm
05117990001	0,16	0,8	40	97	2,0	1/32"	1 9/16"	10
05117991001	0,18	1,0	40	97	2,0	0,04"	1 9/16"	10
05117992001	0,20	1,2	40	97	2,0	0,05"	1 9/16"	10
05118002001	0,23	1,5	40	97	2,0	1/16"	1 9/16"	10
05118003001	0,23	1,5	60	97	2,0	1/16"	2 3/8"	10
05118000001	0,25	1,2	40	97	2,0	0,05"	1 9/16"	10
05118001001	0,25	1,2	60	97	2,0	0,05"	2 3/8"	10
05117993001	0,30	1,8	40	97	2,0	0,07"	1 9/16"	10
05118004001	0,30	1,8	60	97	2,0	0,07"	2 3/8"	10
05118005001	0,40	2,0	40	97	2,5	5/64"	1 9/16"	10
05118006001	0,40	2,0	60	97	2,5	5/64"	2 3/8"	10
05118007001	0,40	2,0	100	97	2,5	5/64"	4"	10
05117994001	0,40	2,5	50	97	2,5	3/32"	2"	10
05118008001	0,40	2,5	80	97	2,5	3/32"	3 1/8"	10
05118009001	0,40	2,5	100	97	2,5	3/32"	4"	10
05117995001	0,50	3,0	50	97	3,0	1/8"	2"	10
05118010001	0,50	3,0	80	97	3,0	1/8"	3 1/8"	10
05118011001	0,50	3,0	100	97	3,0	1/8"	4"	10
05117996001	0,50	3,0	150	97	4,0	1/8"	6"	10
05118012001	0,60	3,5	80	97	4,0	9/64"	3 1/8"	10
05118014001	0,80	4,0	80	97	4,0	5/32"	3 1/8"	10
05118015001	0,80	4,0	100	97	4,0	5/32"	4"	10
05118016001	0,80	4,0	150	97	4,0	5/32"	6"	10

### 2050 PH Screwdriver for Phillips screws for electronic applications



**Application:** Phillips screws

**Blade:** Round

**Design:** Chrome-plated, Black Point

**Handle:** Kraftform Micro with non-roll feature and rotating cap, multi-component

Code	mm	mm	mm	mm	mm	mm	mm	mm
05118019001	PH 00	40	97	2,5	1 9/16"			10
05118020001	PH 00	60	97	3,0	2 3/8"			10
05118022001	PH 0	60	97	3,0	2 3/8"			10
05118023001	PH 1	60	97	4,0	2 3/8"			10
05118024001	PH 1	80	97	4,0	3 1/8"			10
05118025001	PH 1	100	97	4,0	4"			10

### 2055 PZ Pozidriv screwdriver for electronic applications



**Application:** Suitable for Pozidriv® screws

**Blade:** Round

**Design:** Chrome-plated, Black Point

**Handle:** Kraftform Micro with non-roll feature and rotating cap, multi-component

Code	mm	mm	mm	mm	mm	mm	mm	mm
05118030001	PZ 0	60	97	3,0	2 3/8"			10
05118032001	PZ 1	80	97	4,0	3 1/8"			10

\*) Pozidriv = reg. trademark of European Industrial Service Ltd.

### 2067 TORX® HF screwdriver with holding function for electronic applications



**Application:** TORX® socket screws

**Blade:** Round

**Design:** Holding function for TORX® screws made according to Acument Global Technologies Inc. specifications, chrome-plated, Black Point

**Handle:** Kraftform Micro with non-roll feature and rotating cap, multi-component

Code	mm	mm	mm	mm	mm	mm	mm	mm
05118180001	TX 4	40	97	2,5	1 9/16"			5
05118181001	TX 5	40	97	3,0	1 9/16"			5
05118182001	TX 6	40	97	3,0	1 9/16"			5
05118183001	TX 7	60	97	3,0	2 3/8"			5
05118184001	TX 8	60	97	3,0	2 3/8"			5
05118185001	TX 9	60	97	4,0	2 3/8"			5
05118186001	TX 10	60	97	4,0	2 3/8"			5
05118187001	TX 15	60	97	4,0	2 3/8"			5
05118188001	TX 20	60	97	4,0	2 3/8"			5



### How can I hold my TORX® screw securely on the screwdriver?



The electronic TORX® HF screwdriver with holding function literally presses the screw onto the screwdriver. The conical driving flanks that taper toward the tip of the tool, the optimised flank base and the ideal engage depth hold the screw securely on the blade.

## 2067 TORX® screwdriver for electronic applications



**Application:** TORX® socket screws

**Blade:** Round

**Design:** Chrome-plated, Black Point

**Handle:** Kraftform Micro with non-roll feature and rotating cap, multi-component

Code		mm	mm	mm		
05118035001	TX 1	40	97	2,0	1 9/16"	5
05118036001	TX 2	40	97	2,0	1 9/16"	5
05118037001	TX 3	40	97	2,0	1 9/16"	5
05118039001	TX 4	40	97	2,5	1 9/16"	5
05118040001	TX 5	40	97	3,0	1 9/16"	5
05118042001	TX 6	40	97	3,0	1 9/16"	5

## 2067 TORX® B0 screwdriver for electronic applications



**Application:** TORX® socket screws with safety pin  
(B0 = with bore hole)

**Blade:** Round

**Design:** Bore hole in TORX® section, chrome-plated, Black Point

**Handle:** Kraftform Micro with non-roll feature and rotating cap, multi-component

Code		mm	mm	mm		
05118044001	TX 7	60	97	3,0	1 9/16"	5
05118046001	TX 8	60	97	3,0	2 3/8"	5
05118048001	TX 9	60	97	4,0	2 3/8"	5
05118050001	TX 10	60	97	4,0	2 3/8"	5
05118052001	TX 15	60	97	4,0	2 3/8"	5
05118054001	TX 20	60	97	4,0	2 3/8"	5

## 2067 TORX PLUS® screwdriver for electronic applications



**Application:** TORX PLUS® socket screws

**Blade:** Round

**Design:** Chrome-plated, Black Point

**Handle:** Kraftform Micro with non-roll feature and rotating cap, multi-component

Code		mm	mm	mm		
05118200001	4 IP	40	97	2,5	1 9/16"	5
05118201001	5 IP	40	97	3,0	1 9/16"	5
05118202001	6 IP	40	97	3,0	1 9/16"	5
05118203001	7 IP	60	97	3,0	2 3/8"	5
05118204001	8 IP	60	97	3,0	2 3/8"	5
05118205001	9 IP	60	97	4,0	2 3/8"	5
05118206001	10 IP	60	97	4,0	2 3/8"	5
05118207001	15 IP	60	97	4,0	2 3/8"	5
05118208001	20 IP	60	97	4,0	2 3/8"	5

## 2054 Hexagon screwdriver for electronic applications

**Hex-Plus**



**Application:** Hexagon socket screws

**Blade:** Round

**Design:** Hex-Plus, chrome-plated, Black Point

**Handle:** Kraftform Micro with non-roll feature and rotating cap, multi-component

Code	mm	mm	mm	mm		
05118060001	0,7	40	97	3,0	1 9/16"	5
05118062001	0,9	40	97	3,0	1 9/16"	5
05118064001	1,3	40	97	3,0	1 9/16"	5
05118066001	1,5	60	97	3,0	2 3/8"	5
05118068001	2,0	60	97	3,0	2 3/8"	5
05118070001	2,5	60	97	4,0	2 3/8"	5
05118072001	3,0	60	97	4,0	2 3/8"	5
05118074001	0,05"	40	97	3,0	1 9/16"	5
05118076001	1/16"	60	97	3,0	2 3/8"	5
05118078001	5/64"	60	97	3,0	2 3/8"	5
05118080001	3/32"	60	97	4,0	2 3/8"	5
05118082001	7/64"	60	97	4,0	2 3/8"	5
05118075001	1/8"	60	97	4,0	2 3/8"	5

## ? How to perform precision screwdriving jobs quickly whilst still applying the required degree of force



The Kraftform Micro, with its three zones and their specific arrangement, satisfies these requirements perfectly. The free-turning cap that provides support for the hand works with these advantages, enabling quick and easy precision work.

# Kraftform Micro Series

The superior screwdriver for electronics technicians

## 2052 Ball end hexagon screwdriver for electronic applications



**Application:** Hexagon socket screws

**Blade:** Round

**Design:** Hexagon ball end, chrome-plated, Black Point

**Handle:** Kraftform Micro with non-roll feature and rotating cap, multi-component

Code	mm	mm	mm	mm	mm	
05118089001	1,3	60	97	3,0	2 3/8"	5
05118090001	1,5	60	97	3,0	2 3/8"	5
05118092001	2,0	60	97	3,0	2 3/8"	5
05118094001	2,5	60	97	4,0	2 3/8"	5
05118096001	3,0	60	97	4,0	2 3/8"	5
05118098001	1/16"	60	97	3,0	2 3/8"	5
05118100001	5/64"	60	97	3,0	2 3/8"	5
05118102001	3/32"	60	97	3,0	2 3/8"	5
05118106001	7/64"	60	97	4,0	2 3/8"	5
05118103001	1/8"	60	97	4,0	2 3/8"	5

## 2069 Nutdriver for electronic applications



**Application:** Hexagon headed bolts, screws and nuts

**Blade:** Round

**Design:** Chrome-plated

**Handle:** Kraftform Micro with non-roll feature and rotating cap, multi-component

Code	mm	mm	mm	mm	mm	
05118108001	1,5	60	97	4,0	2 3/8"	5
05118109001	1,8	60	97	4,0	2 3/8"	5
05118110001	2,0	60	97	4,0	2 3/8"	5
05118112001	2,5	60	97	4,0	2 3/8"	5
05118114001	3,0	60	97	5,0	2 3/8"	5
05118116001	3,2	60	97	5,0	2 3/8"	5
05118118001	3,5	60	97	5,3	2 3/8"	5
05118120001	4,0	60	97	5,5	2 3/8"	5
05118122001	4,5	60	97	6,2	2 3/8"	5
05118124001	5,0	60	97	7,0	2 3/8"	5
05118126001	5,5	60	97	7,8	2 3/8"	5
05118128001	3/32"	60	97	5,7	2 3/8"	5
05118130001	7/64"	60	97	5,7	2 3/8"	5
05118132001	1/8"	60	97	5,7	2 3/8"	5
05118134001	9/64"	60	97	5,7	2 3/8"	5
05118136001	5/32"	60	97	5,7	2 3/8"	5
05118135001	3/16"	60	97	-	2 3/8"	5
05118137001	7/32"	60	97	-	2 3/8"	5



## How to hold any screw securely on the screwdriver



The Wera magnetiser/demagnetiser: simply run the tool down the positive side of the Wera magnetiser/demagnetiser and the tool immediately becomes magnetised and is able to hold the screw securely on the blade. To demagnetise the tool, simply run it down one of the four negative sides. See page 68.

## 1429 Chip lifter



**Application:** Lifting tightly-fitting parts from circuit boards after desoldering

**Blade:** Round

**Design:** Chrome-plated

**Handle:** Kraftform Micro with non-roll feature and rotating cap, multi-component

Code	mm	mm	mm	mm	
05027456001	1,0	3,5	50	97	10



## 2035/6 A Screwdriver set and rack for electronic applications



**Application:** Slotted and Phillips screws  
**Content:** 6-piece set and rack in display carton

Code			
05118150001	● 2035 Micro	1 x 0,30x1,8x60; 1 x 0,40x2,0x60; 1 x 0,40x2,5x80; 1 x 0,50x3,0x80	1
	⊕ 2050 PH Micro	1 x PH 00x60; 1 x PH 0x60	

## 2067/6 TORX® B0 screwdriver set and rack for electronic applications



**Application:** TORX® socket screws with safety pin (B0 = with bore hole)  
**Content:** 6-piece set and rack in display carton

Code			
05118154001	⊕ 2067 TORX® B0 Micro	1 x TX 7x60; 1 x TX 8x60; 1 x TX 9x60; 1 x TX 10x60; 1 x TX 15x60; 1 x TX 20x60	1

## 2035/6 B Screwdriver set and rack for electronic applications

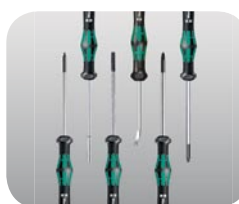


**Application:** Slotted and Phillips screws  
**Content:** 6-piece set and rack in display carton

Code			
05118152001	● 2035 Micro	1 x 0,40x2,5x80; 1 x 0,50x3,0x80; 1 x 0,60x3,5x80; 1 x 0,80x4,0x80	1
	⊕ 2050 PH Micro	1 x PH 0x60; 1 x PH 1x80	



### Why is the Micro range so extensive?



Every challenging screwdriving job merits a perfect problem solution. Therefore, the extent and depth of the range is aligned to the needs of professional users.

# Kraftform Micro Series

## The superior screwdriver for electronics technicians

### 2052/6 Hexagon screwdriver set and rack for electronic applications



**Application:** Ball end for hexagon socket screws  
**Content:** 6-piece set and rack in display carton

Code				
05118156001	○	2052 Micro	1 x 1,5x60; 1 x 2,0x60; 1 x 2,5x60; 1 x 3,0x60	1
	○	2054 Micro	1 x 0,9x40; 1 x 1,3x40	

### 2069/6 Screwdriver set and rack for electronic applications



**Application:** Hexagon headed bolts, screws and nuts  
**Content:** 6-piece set and rack in display carton

Code				
05118158001	●	2069 Micro	1 x 2,0x60; 1 x 2,5x60; 1 x 3,0x60; 1 x 3,5x60; 1 x 4,0x60; 1 x 5,0x60	1

