

Inchester Decoder

SERIES: MAD-85

14 pins DIP
TTL Interfaced



Features:

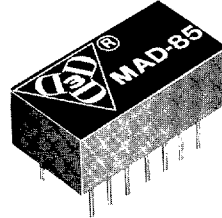
- TTL input & outputs.
- 14 pins DIP.
- Data Rates to 25 MB/S.
- Self Synchronizing within one BIT time.

Application:

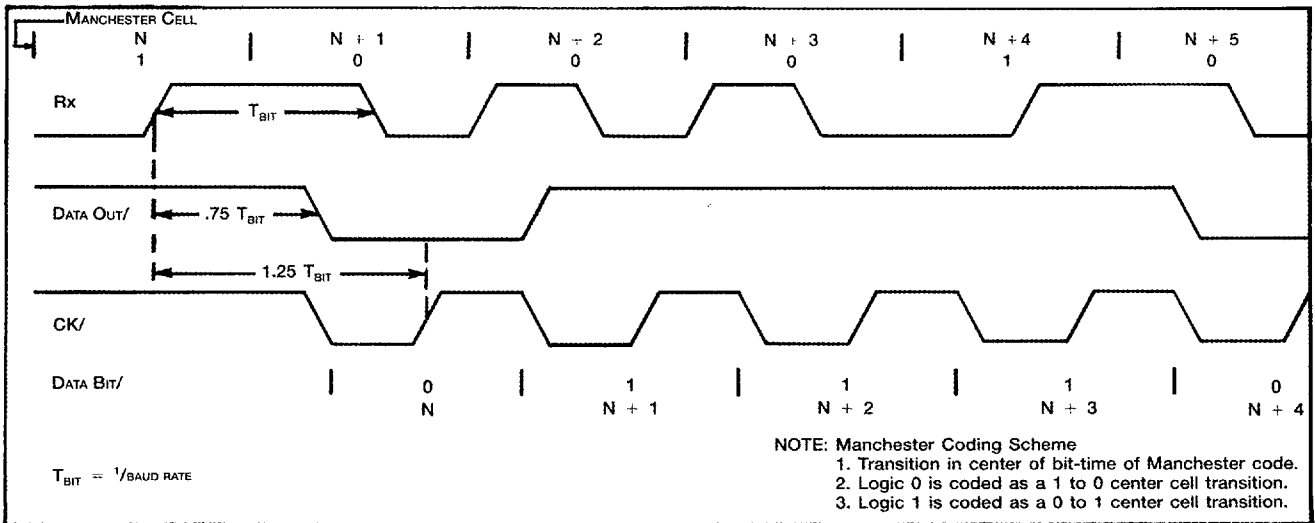
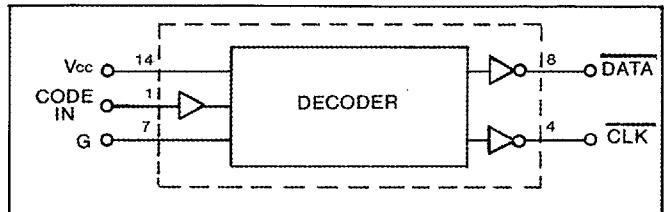
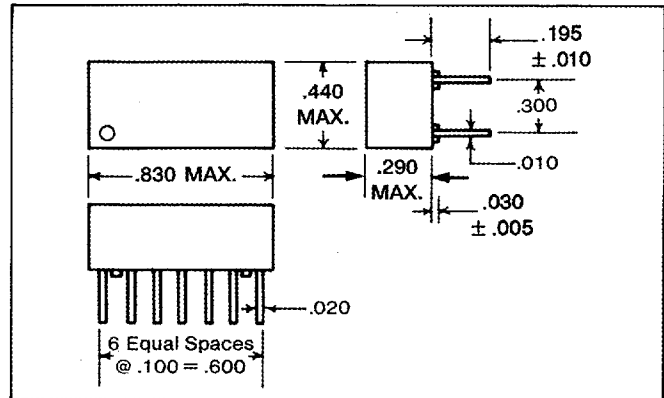
- Local Area Network (LAN) interfaces.
- Ethernet Bus interfaces.
- IEEE 802 LAN interfaces.
- Fiber optic data links.
- Multidrop Bus interfaces.

Specifications:

- Operating temperature: 0° to 70°C.
- Temperature coefficient: 100 PPM/°C.
- Supply voltage V_{cc}: 5 Vdc ± 5%.
- Power dissipation: 740 mw max.
- DC parameters: See TTL-Fast Schottky Logic Table on Page 6.



Part No.	Operating Data Rates	Part No.	Operating Data Rates
MAD-85-1	1 MB/S	MAD-85-14	14 MB/S
MAD-85-2	2 MB/S	MAD-85-15	15 MB/S
MAD-85-3	3 MB/S	MAD-85-16	16 MB/S
MAD-85-4	4 MB/S	MAD-85-17	17 MB/S
MAD-85-5	5 MB/S	MAD-85-18	18 MB/S
MAD-85-6	6 MB/S	MAD-85-19	19 MB/S
MAD-85-7	7 MB/S	MAD-85-20	20 MB/S
MAD-85-8	8 MB/S	MAD-85-21	21 MB/S
MAD-85-9	9 MB/S	MAD-85-22	22 MB/S
MAD-85-10	10 MB/S	MAD-85-23	23 MB/S
MAD-85-11	11 MB/S	MAD-85-24	24 MB/S
MAD-85-12	12 MB/S	MAD-85-25	25 MB/S



3 Mt. Prospect Avenue. Clifton. New Jersey 07013 ■ (201) 773-2299 ■ FAX (201) 773-9672

2644382 0001075 2T8