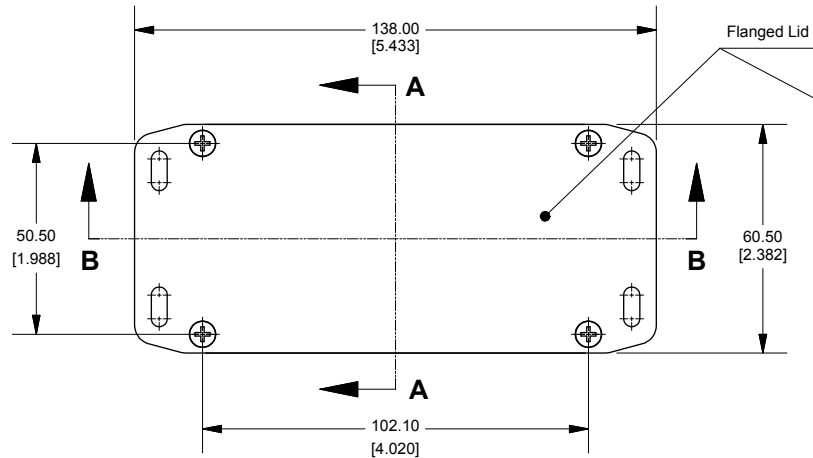
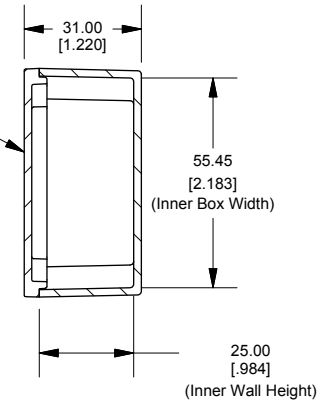


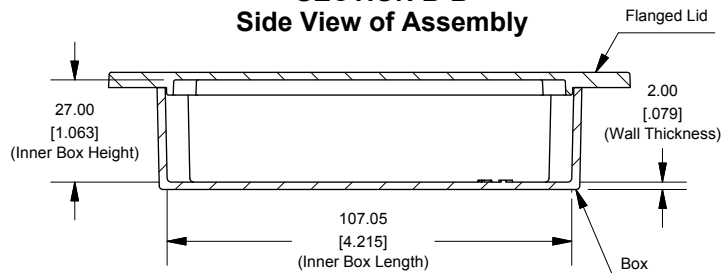
# Top View of Assembly



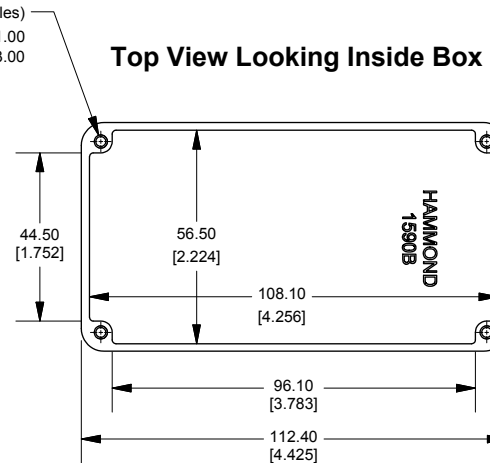
# SECTION A-A End View of Assembly



# SECTION B-B Side View of Assembly



# Top View Looking Inside Box



Enclosures can be Factory Modified (Milling, Drilling, Printing etc.)  
Contact Factory [mjm@hammondmgf.com](mailto:mjm@hammondmgf.com) for quotes  
Solid models of this enclosure available in STEP or IGES.

# NOTE

Purchased assembly includes box, lid and 4 cover screws.  
Box and lid are made from Diecast Aluminum Alloy.  
Silicone Gasket supplied with liquid resistant enclosure.

# PART NUMBERS

## 1590BFL Enclosure

Natural Finish Enclosure	1590BFL
Black Textured Enclosure	1590BFLBK
1590BFL Liquid Resistant Enclosure (Silicone Gasket)	
Natural Finish Enclosure	1590WBFL
Black Textured Enclosure	1590WBFLBK

## ACCESSORIES

Recommended Torque: 75 ozf.in / 55 cN.m

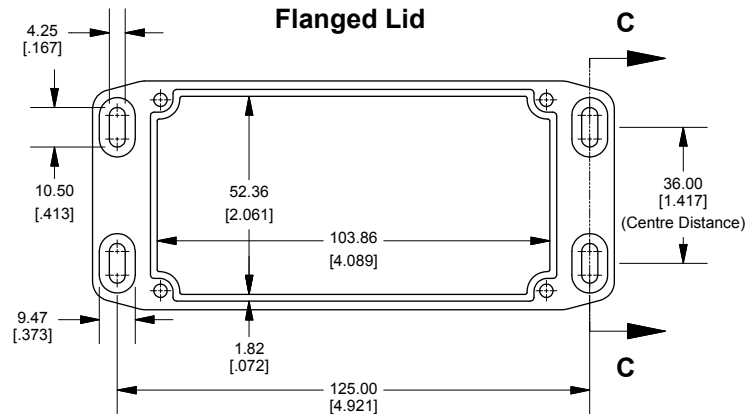
## Liquid Resistant Cover Screws

Stainless Steel Cover Screws (Pkg 100) [6-32 x 1/2" With O-Ring]	1590WMS100
Black Stainless Steel Cover Screws (Pkg 100) [6-32 x 1/2" With O-Ring]	1590WMS100BK

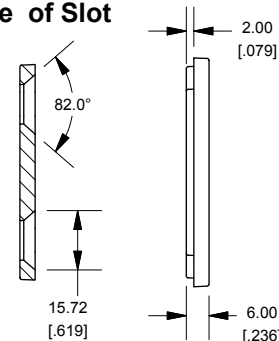
## Standard Cover Screws

Plated Cover Screws (Pkg 100) [6-32 x 1/2"]	1590MS100
Black Cover Screws (Pkg 100) [6-32 x 1/2"]	1590MS100BK

# Flanged Lid



# SECTION C-C Side of Slot



Dimensions:  
mm  
[inches]



# Mouser Electronics

Authorized Distributor

Click to View Pricing, Inventory, Delivery & Lifecycle Information:

Hammond:

[1590BFLBK](#) [1590WBFL](#) [1590WBFLBK](#) [1590BFL](#)