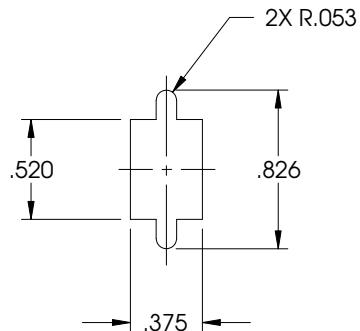
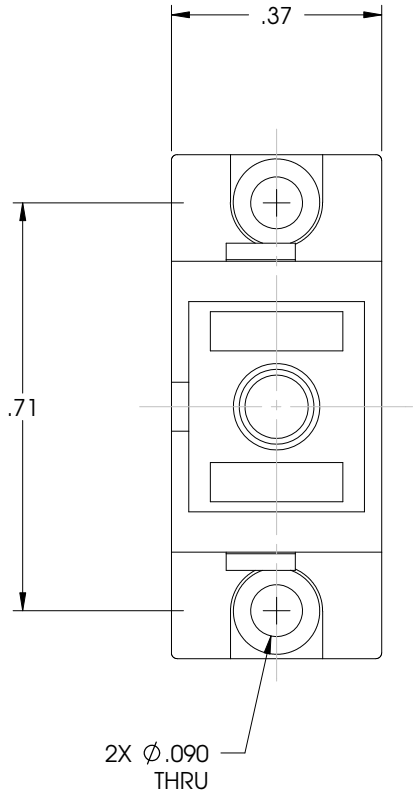
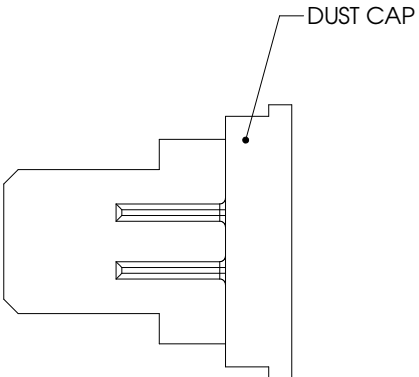
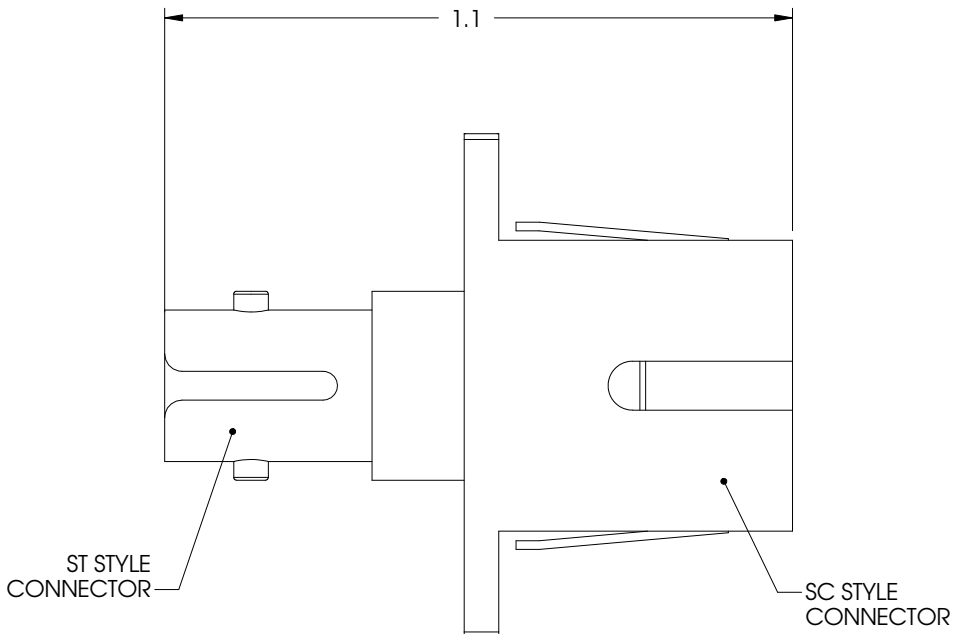
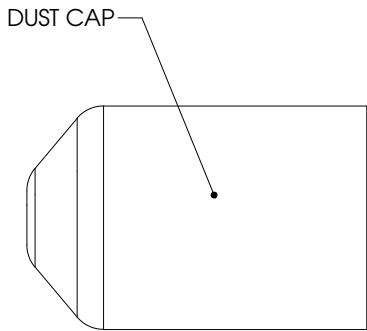
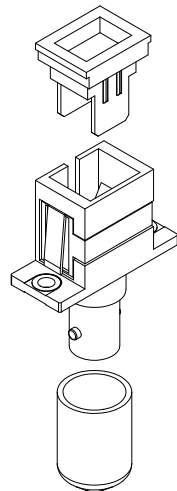


THE INFORMATION CONTAINED IN THIS DRAWING IS THE SOLE PROPERTY OF L-COM, INC. ANY REPRODUCTIONS IN PART OR WHOLE WITHOUT THE WRITTEN PERMISSION OF L-COM, INC. IS PROHIBITED.

REVISIONS			
REV	DESCRIPTION	DATE	APPROVED
A	RELEASED FOR PRODUCTION	01/12/00	MCCORMICK
B	ECN# 0922 REVISED CLIPS	05/24/01	MCCORMICK
C	ECN# 1605 ADDED COMPONENT SPECIFICATION TABLE	1/05/03	MCCORMICK
D	ECN# 2282 REVISED NOTES	12/29/05	MCCORMICK



RECOMMENDED
PANEL HOLE



NOTES:

1.0 PACKAGING:

1.1 THE PRODUCT SHALL BE PRESERVED & PACKAGED IN A MANNER WHICH WILL AFFORD ADEQUATE PROTECTION AGAINST CORROSION, DETERIORATION, AND PHYSICAL DAMAGE DURING SHIPMENT.

1.2 INDIVIDUALLY PACKAGE EACH ASSEMBLY UTILIZING APPROPRIATE SIZED BAG DEPICTED ON [1AN01-001-OD1](#). MARK EACH BAG PER [LSP-010](#).

2.0 WORKMANSHIP

2.1 CABLE ASSEMBLIES SHALL BE MANUFACTURED IN SUCH A MANNER AS TO BE UNIFORM IN QUALITY AND SHALL BE FREE FROM BURRS, CRAZING, CRACKS, VOIDS, PIMPLES, CHIPS, BLISTERS, PINHOLES, SHARP CUTTING EDGES, AND OTHER DEFECTS THAT WILL ADVERSELY AFFECT LIFE, SERVICEABILITY, OR APPEARANCE.

3.0 VISUAL AND MECHANICAL

3.1 CABLE ASSEMBLIES SHALL BE INSPECTED TO VERIFY COMPLIANCE TO THIS DRAWING.
3.2 MAXIMUM RECOMMENDED PANEL THICKNESS: 0.12"

Component Specifications	
Material	
Sleeve	Phosphor Bronze
Mounting Clip	Stainless Steel
Spring Lever	Engineering Plastic
ST Body	Zinc Alloy
Rivet	Copper
SC Body	Zinc Alloy
ST Dust Cap	PVC
SC Dust Cap	Engineering Plastic
Finish	
ST Body	Nickel
Rivet	Tin
SC Body	Nickel

CS-120

UNLESS OTHERWISE SPECIFIED
DIMENSIONS ARE IN INCHES
TOLERANCES ARE:
 .X $\pm .1$
 .XX $\pm .05$
 .XXX $\pm .005$
CABLE LENGTH TOLERANCE
 $\leq 300'$ $\pm 5\%$ $> 300'$ $\pm 2\%$

APPROVALS	DATE	PRODUCT DESCRIPTION		U1845	
DRAWN BY C.MCCORMICK	01/12/2000	ST TO SC ADAPTOR;BRONZE SLEEVE			
CHECKED BY D.PARHAM	01/12/2000	DRAWING TITLE			
APPROVED BY R.CARRICK	01/12/2000	OUTLINE DRAWING			
CONFIGURATION DETAILS OF UNDIMENSIONED FEATURES MAY VARY		SIZE	FSCM NO.	DWG. NO.	REV.
		B	43321	FOA-211-OD1	D
		SCALE: 1:2 CAD FILE: FOA-211-OD1.SLDRW			SHEET 1 OF 1