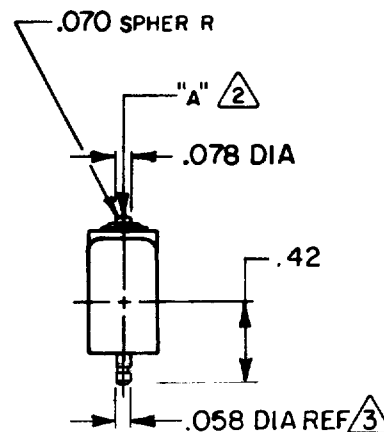
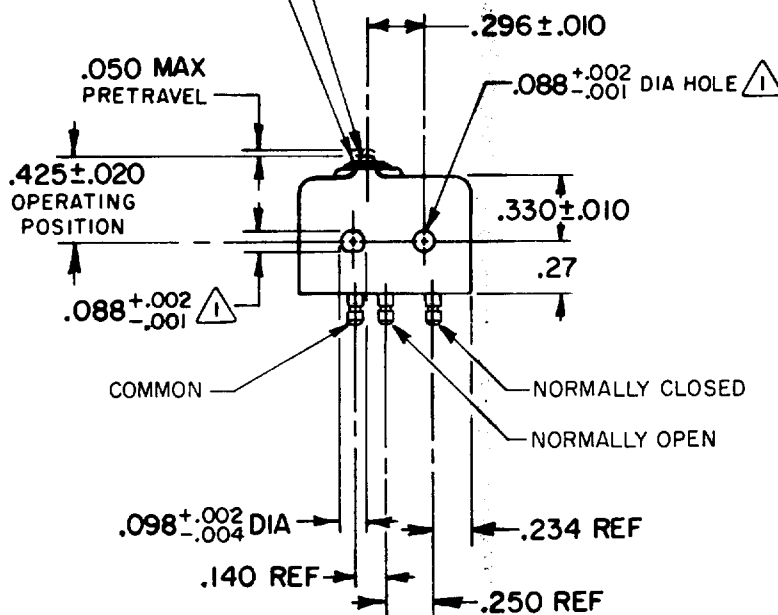


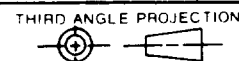
CORROSION RESISTANT STEEL PLUNGER  
 ELASTOMER PLUNGER SEAL



**NOTES**

- 1 MOUNTING HOLES WILL ACCEPT .087 MAX DIA PINS OR SCREWS ON .375±.002 CENTERS
- 2 ACTUATION IN LINE WITH ARROW "A" IS RECOMMENDED
- 3 PLATED TERMINALS WILL ACCEPT "AMP INC" .058 DIA PIN RECEPTACLES FOR UL STANDARD #1054 REQUIREMENTS, MICRO SWITCH SUGGESTS "AMP INC" RECEPTACLE #61160-1

THIS DRAWING COVERS A PROPRIETARY ITEM AND IS THE PROPERTY OF MICRO SWITCH, A DIVISION OF HONEYWELL. THIS DRAWING IS NOT TO BE COPIED OR USED WITHOUT THE APPROVAL OF MICRO SWITCH.



**CHARACTERISTICS**

OPERATING FORCE-----5-17 OZ  
 RELEASE FORCE-----4 OZ MIN  
 RELEASE TRAVEL-----.004 MIN  
 DIFFERENTIAL TRAVEL-----.004 MAX  
 OVERTRAVEL-----.003 MIN

**ELECTRICAL DATA**

CONTACT ARRANGEMENT  
 S P D T

250 VAC-----5 AMP  
 30 VOLTS DC RATING  
 INDUCTIVE-----SEA LEVEL--3 AMP  
 50,000 FT--2.5 AMP  
 RESISTIVE-----SEA LEVEL--5 AMP  
 50,000 FT--5 AMP  
 MAXIMUM INRUSH-----24 AMP

**SCALE FULL**

DO NOT SCALE PRINT

**TOLERANCES**  
 APPLY TO DESIGN UNITS. CONVERSIONS ARE ONLY FOR REFERENCE. UNLESS NOTED, TOLERANCES ARE 2

	DIM. mm	TOL. mm/in	DIM. in	TOL. mm/in
NO PLACES	X	17.04	X X	0.01/0.02
ONE PLACE	X,X	0.41/0.18	X X X	0.38/0.15
TWO PLACES	X,X,X	0.157/0.008	X X X X	0.137/0.006
THREE PLACES				
ANGLES				

SI METRIC ☐ US CUSTOMARY ☒

DESIGN UNITS ☐ WEIGHT .26 OZ MAX

ISEI-H58

M

DRAWING  
NUMBER

ISSUE

REPLACES

PR-16072

CHECK

CHECK

REVISIONS

CHECK

87

DEC

19

AM

CHECK

87

DEC

17

WJK

DRAWN

FO-52848-A