

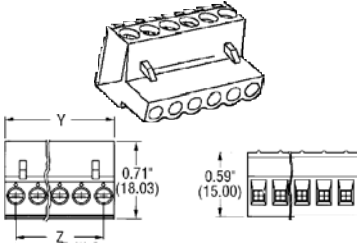


Pluggable Terminal Blocks
(0.200" Spacing) Series 86 with Rising
Cage Pressure Clamps

- Holds Wires For Secure, Reliable Contact
- Industry Standard Interface
- End-To-End Stackable
- High Flammability Rating (94V-0)
- Wire Range: 12-30 AWG
- Also Available in 5.0 mm Spacing

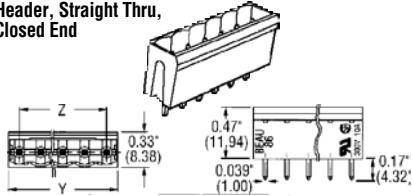


Plug



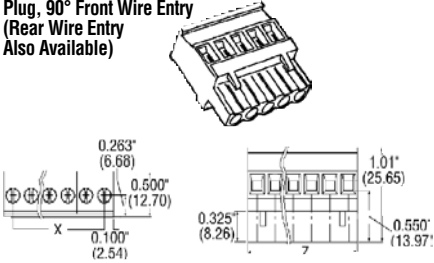
Stock No.	Mfr.'s Type	No. of Poles	Dim. (In.)		EACH		
			Y	Z	1-99	100-249	250-499
607-2000	860502	2	0.395	0.200	.95	.83	.69
607-2002	860503	3	0.595	0.400	1.43	1.24	1.04
607-2004	860504	4	0.795	0.600	1.65	1.43	1.20
607-2006	860505	5	0.995	0.800	2.34	2.07	1.73
607-2008	860506	6	1.195	1.000	2.81	2.47	2.07
607-2012	860508	8	1.595	1.400	3.74	3.30	2.77
607-2016	860510	10	1.995	1.800	4.68	4.13	3.46
607-2018	860512	12	2.395	2.200	5.62	4.96	4.15

Header, Straight Thru,
Closed End



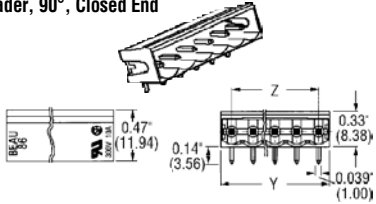
607-2022	861602	2	0.450	0.200	.36	.31	.26
607-2024	861603	3	0.650	0.400	.54	.47	.40
607-2030	861606	6	1.250	1.000	.94	.82	.68
607-2038	861610	10	2.070	1.800	1.82	1.56	1.32
607-2040	861612	12	2.470	2.200	2.14	1.89	1.58

Plug, 90° Front Wire Entry
(Rear Wire Entry
Also Available)



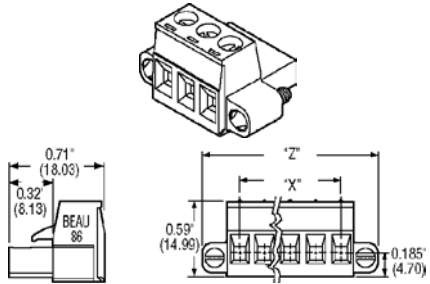
607-2300	860902	2	0.395	0.200	1.37	1.04	.86
607-2304	860904	4	0.795	0.600	2.69	2.09	1.72
607-2308	860906	6	1.195	1.000	3.50	2.71	2.24
607-2316	860910	10	1.995	1.800	6.72	5.22	4.31
607-2318	860912	12	2.395	2.200	7.92	6.27	5.17

Header, 90°, Closed End



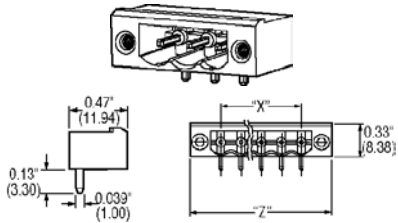
607-2066	861902	2	0.450	0.200	.36	.31	.26
607-2068	861903	3	0.650	0.400	.54	.47	.40
607-2070	861904	4	0.850	0.600	.73	.63	.53
607-2072	861905	5	1.050	0.800	.91	.79	.66
607-2074	861906	6	1.250	1.000	1.09	.95	.79
607-2078	861908	8	1.670	1.400	1.46	1.26	1.06
607-2082	861910	10	2.070	1.800	1.82	1.58	1.32
607-2084	861912	12	2.470	2.200	2.14	1.89	1.58

Plug with Retention Screws



Stock No.	Mfr.'s Type	No. of Poles	Dim. (In.)		EACH		
			X	Z	1-99	100-249	250-499
607-8000	864502	2	0.200	0.800	1.72	1.50	1.24
607-8002	864503	3	0.400	1.000	2.20	1.91	1.59
607-8004	864504	4	0.600	1.200	2.68	2.33	1.93
607-8006	864505	5	0.800	1.400	3.15	2.74	2.28
607-8008	864506	6	1.000	1.600	3.63	3.16	2.63

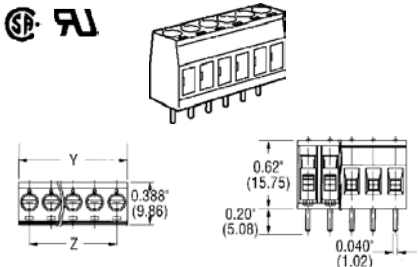
Header with Threaded
Retention Inserts



Stock No.	Mfr.'s Type	No. of Poles	Dim. (In.)		EACH		
			X	Z	1-99	100-249	250-499
607-8010	865902	2	0.200	0.800	1.31	1.14	.95
607-8012	865903	3	0.400	1.000	1.49	1.30	1.08
607-8014	865904	4	0.600	1.200	1.68	1.46	1.21
607-8016	865905	5	0.800	1.400	1.86	1.62	1.34
607-8018	865906	6	1.000	1.600	2.04	1.78	1.48

*Headers also available in straight through style. Please contact your local Allied sales representative.

Fixed PCB Terminal Blocks
(0.200" Spacing) Series 88 With
Rising Cage Pressure Clamps

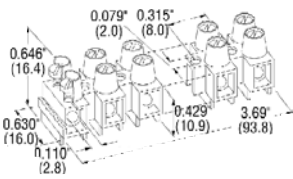


- Holds Wires For Secure, Reliable Contact
- Molded To Length
- High Flammability Rating (94V-0)
- Extra High Conductivity Contacts
- Wire Range: 12-30 AWG
- Small Footprint: 0.388"

Stock No.	Mfr.'s Type	No. of Poles	Dim. (In.)		EACH		
			Y	Z	1-99	100-249	250-499
607-2182	880502	2	0.395	0.200	.63	.54	.45
607-2184	880503	3	0.595	0.400	.93	.81	.67
607-2186	880504	4	0.795	0.600	.93	.80	.68
607-2188	880505	5	0.995	0.800	1.55	1.34	1.12
607-2190	880506	6	1.195	1.000	1.86	1.61	1.35
607-2194	880508	8	1.595	1.400	2.42	2.14	1.80
607-2198	880510	10	1.995	1.800	3.04	2.68	2.24
607-2200	880512	12	2.395	2.200	3.64	3.21	2.69

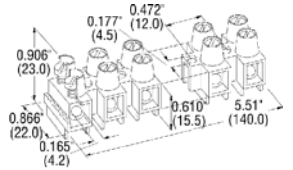
Eurostyle Two-Screw Terminal Strips

- Touch Safe Design
- Easily Cut to Desired Length



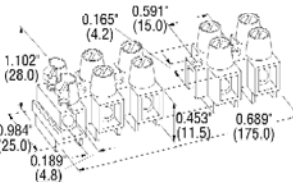
C15 Series, 10 Amps @ 300 V, Wire Range: 12-24 AWG

Stock No.	Mfr.'s Type	No. of Poles	EACH		
			1-99	100-249	250-499
607-2342	C1512	12	2.61	2.02	1.67



C60 Series, 25 Amps @ 600 V, Wire Range: 8-24 AWG

607-2344	C6012	12	3.30	2.56	2.35
----------	-------	----	------	------	------



C100 Series, 40 Amps @ 600 V, Wire Range: 8-24 AWG

607-2346	C10012	12	6.45	5.11	4.68
----------	--------	----	------	------	------

Double-Row Barrier
Terminal Strips (0.438")

— NEW —



78 Series, 20 Amp @ 300 V, Wire Range: 12-14 AWG,
—50 Calls for Phillips®/Slotted Screw

Stock No.	Mfr.'s Type	No. of Poles	EACH		
			1-99	100-249	250-499
607-7803	78003-50	3	1.15	1.00	.85
607-7804	78004-50	4	1.65	1.35	1.15
607-7805	78005-50	5	2.00	1.75	1.45
607-7806	78006-50	6	2.35	2.00	1.75
607-7807	78007-50	7	2.75	2.35	2.00
607-7808	78008-50	8	3.15	2.85	2.35
607-7810	78010-50	10	3.85	3.45	3.00
607-7812	78012-50	12	4.45	4.15	3.85
607-7814	78014-50	14	5.25	4.85	4.35
607-7816	78016-50	16	6.05	5.55	5.15