

Series HF507S

Non-ZIF 90° Socket Direct Mating Type

High Speed
Connectors



Specifications

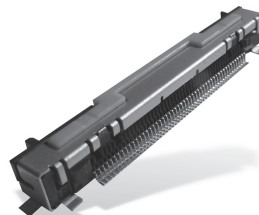
Insulation Resistance:	100MΩ min.
Contact Resistance:	100mΩ max.
Withstanding Voltage:	125V ACrms for 1 minut
Voltage Rating:	50V ACrms
Current Rating:	0.3A
Operating Temp. Range:	-20°C to +85°C
Insertion / Extraction:	30 times max.

Materials and Finish

Housing:	LCP (GF), black
Lock Hold:	SUS t = 0.2mm
Contacts and Terminal:	Phosphor Bronze, (t = 0.15mm) Ni-Au plating

Features

- Suitable for LVDS, HDMI, DVI, PCI express and S-ATA data transmission
- One push lock function for FFC/FPC insertion integrated one push button to extract FFC
- Realization of high speed data transmission at Gbps level
- 100Ω Differential impedance
- High EMI protection due to shielding
- Tape and Reel (1,200 per reel)



Connector Part Number (Details)

HF507S - ** - 72

Series No.

No. of Contacts
(41 and 51)

Design No.



FFC Part Number (Details)

YFC - ** - DM - *

Series No.

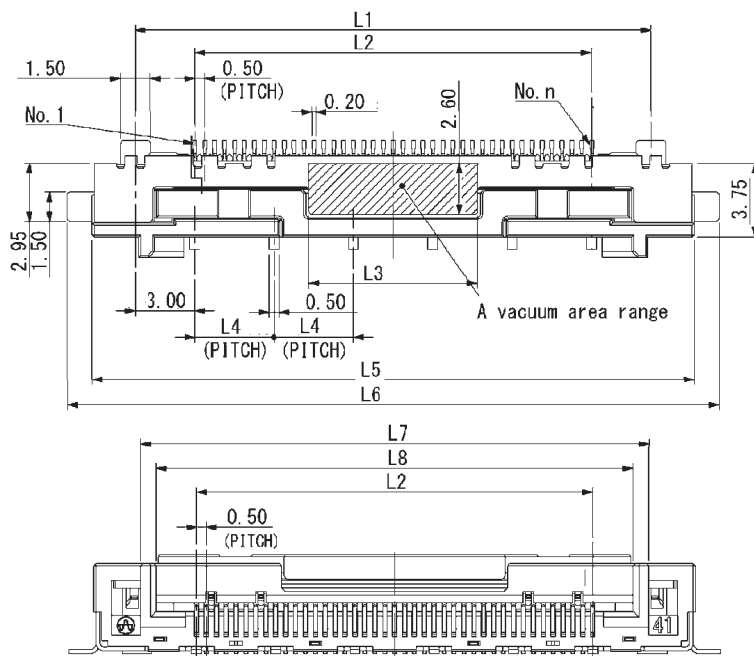
Total Length in mm

Design No.

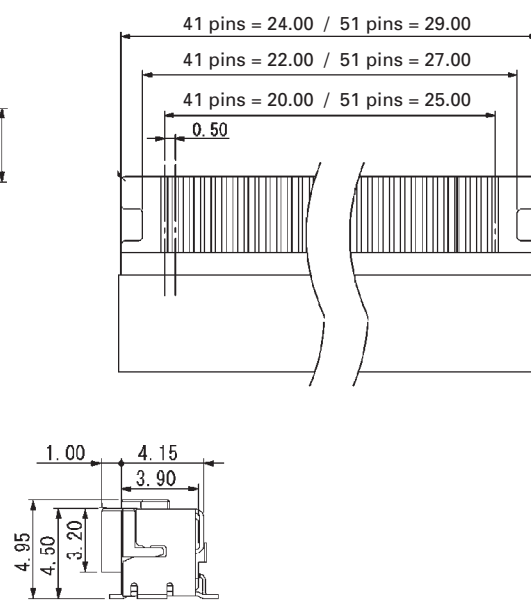
FFC Mating Direction, A = same side
B = opposite side



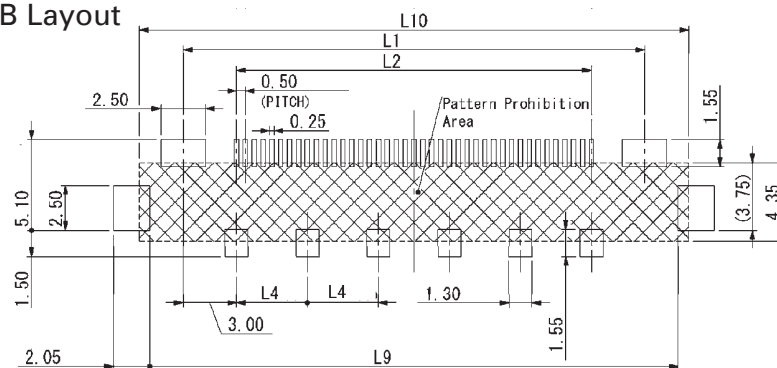
Outline Dimensions for 90° Socket



Outline Dimensions FFC



Recommended PCB Layout



Part Number	Pin Count	L1	L2	L3	L4	L5	L6	L7	L8	L9	L10
HF507S-41-72	41	26.00	20.00	11.70	4.10	30.35	32.85	30.67	24.06	29.75	30.95
HF507S-51-72	51	31.00	25.00	11.70	5.10	35.35	37.85	25.67	29.06	34.75	35.95



Specifications

Insulation Resistance:	100MΩ min. at 500V DC or higher
Contact Resistance:	1.7Ω/m
Withstanding Voltage:	250V AC for 1 minute
Voltage Rating:	30V AC DC
Current Rating:	0.2A or less
Operating Temp. Range:	-40°C to +80°C
Characteristic Impedance:	100±10Ω
Intra / Inter Skew:	10 ps/m or less
Attenuation:	19db/m at 5GHz (reference only)
Bending at 180°:	20 times or more

Materials and Finish

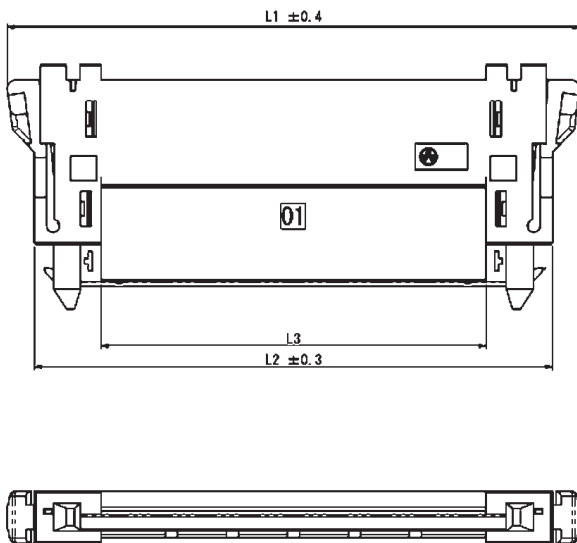
Housing:	LCP (GF), black
Lock Hold:	SUS t = 0.2mm
Contacts:	Phosphor Bronze, (t = 0.15mm) Ni-Au plating
Terminal:	Phosphor Bronze, (t = 0.15mm) Ni-Au plating

Features

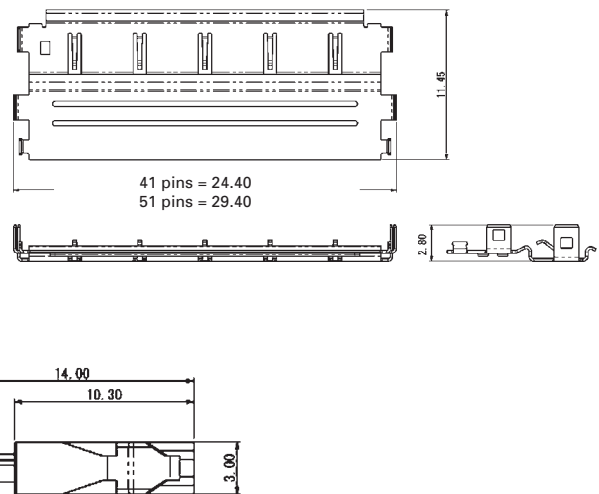
- High speed transmission 3Gbps
- Differential impedance 100Ω
- One shielding
- UL compliant



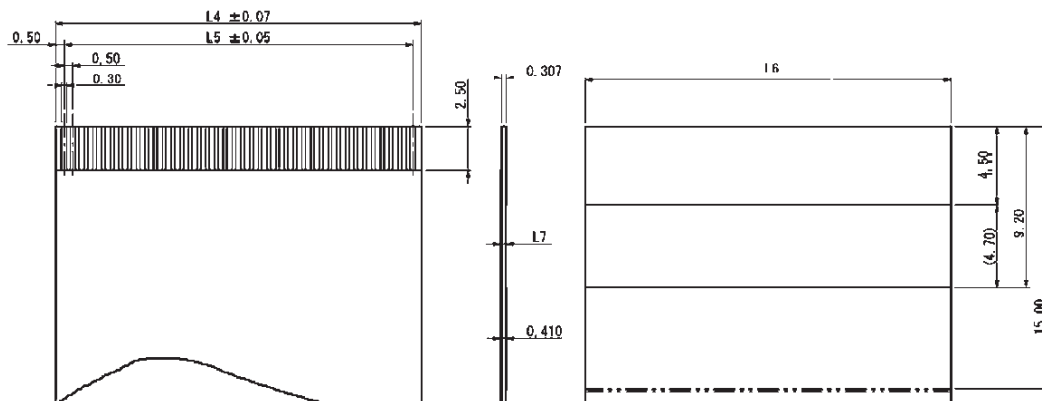
Outline Dimensions



Outline Shielding Dimensions



Outline Cable Dimensions



Part Number (Details)

YFT - ** - 250 - *

Series No.

No. of Contacts
(41 and 51)

Length in mm

A = Adapters on the same side
B = Adapters on reversed side



Part Number	Pin Count	L1	L2	L3	L4	L5	L6
YFT-41-***	41	32.85	29.75	22.10	20.00	21.00	19.75
YFT-51-***	51	37.85	34.75	27.10	25.00	26.00	24.75

Series HF507S Non-ZIF 90° Socket for High Speed Applications

Specifications

Insulation Resistance:	100MΩ min.
Contact Resistance:	100mΩ max.
Withstanding Voltage:	125V ACrms for 1 minute
Voltage Rating:	50V ACrms
Current Rating:	0.3A
Operating Temp. Range:	-20°C to +85°C
Differential Impedance:	100 Ω
Insertion / Extraction:	30 times max.

Materials and Finish

Housing:	LCP (GF), black
Lock Hold:	SUS t = 0.2mm
Contacts:	Phosphor Bronze, (t = 0.15mm) Ni-Au plating
Terminal:	Phosphor Bronze, (t = 0.15mm) Ni-Au plating

Features

- Suitable for LVDS, HDMI, DVI, PCI express and S-ATA data transmission
- Easy operation by side-locking mechanism prevents cable angular insertion and guarantees secure locking

Part Number (Details)

HF507S - 41 - **

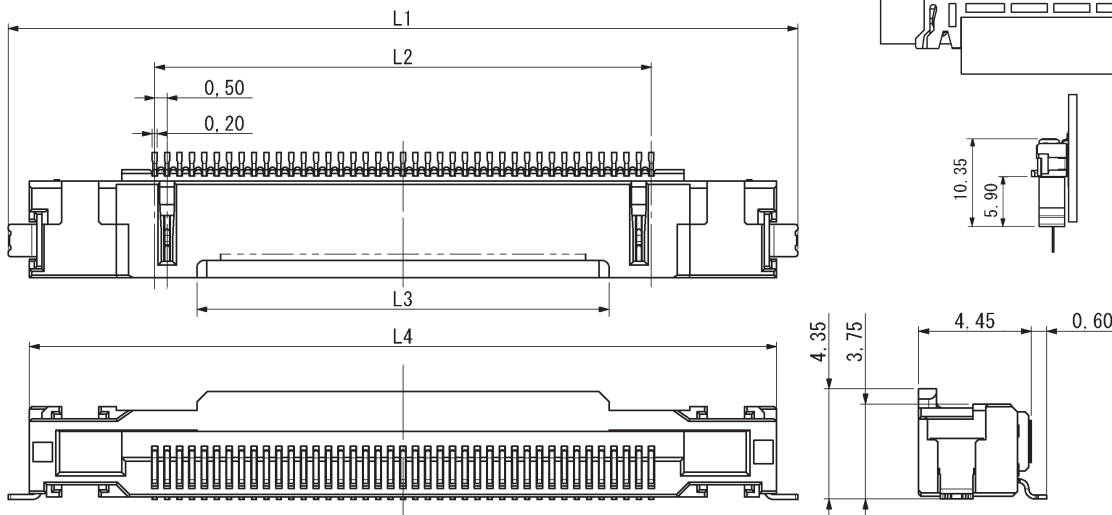
Series No.

No. of Contacts
(21, 31, 41 and 51)

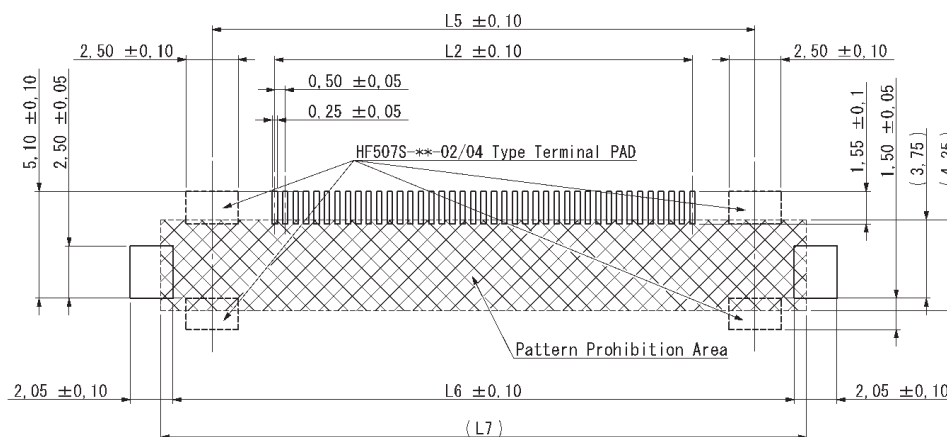
01 = 90° Without Shielding
03 = 90° With Shielding

Applicable Cable
see page C-5 to C-7

Outline Dimensions for 90° Socket



Recommended PCB Layout



Part Number	Pin Count	L1	L2	L3	L4	L5	L6	L7
HF507S-21-0*	21	16.00	10.00	6.60	20.10	16.00	19.75	20.95
HF507S-31-0*	31	21.00	15.00	11.60	25.10	21.00	24.75	25.95
HF507S-41-0*	41	26.00	20.00	16.60	30.10	26.00	29.75	30.95
HF507S-51-0*	51	31.00	25.00	21.60	35.10	31.00	34.75	35.95

Specifications

Insulation Resistance:	100MΩ min.
Contact Resistance:	100mΩ max.
Withstanding Voltage:	125V ACrms for 1 minute
Voltage Rating:	50V ACrms
Current Rating:	0.3A
Operating Temp. Range:	-20°C to +85°C
Differential Impedance:	100 Ω
Insertion / Extraction:	30 times max.

Materials and Finish

Housing:	LCP (GF), black
Lock Hold:	SUS t = 0.2mm
Contacts:	Phosphor Bronze, (t = 0.15mm) Ni-Au plating
Terminal:	Phosphor Bronze, (t = 0.15mm) Ni-Au plating

Features

- Suitable for LVDS, HDMI, DVI, PCI express and S-ATA data transmission
- Easy operation by side-locking mechanism prevents cable angular insertion and guarantees secure locking

Part Number (Details)

HF507S - 21 - **

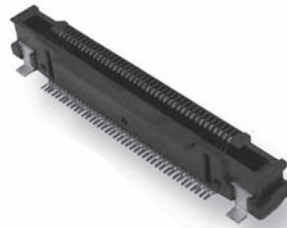
Series No.

No. of Contacts
(21, 31, 41 and 51)

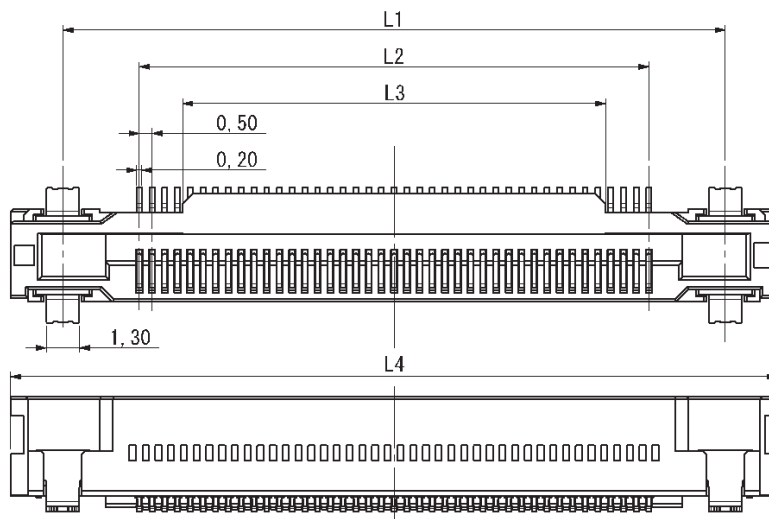
02 = 180° Without Shielding
04 = 180° With Shielding*

*180° with shielding not available
for 21 pin version

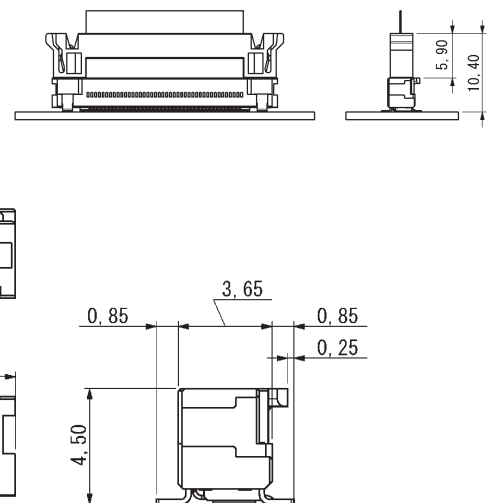
Applicable Cable
see page C-5 to C-7



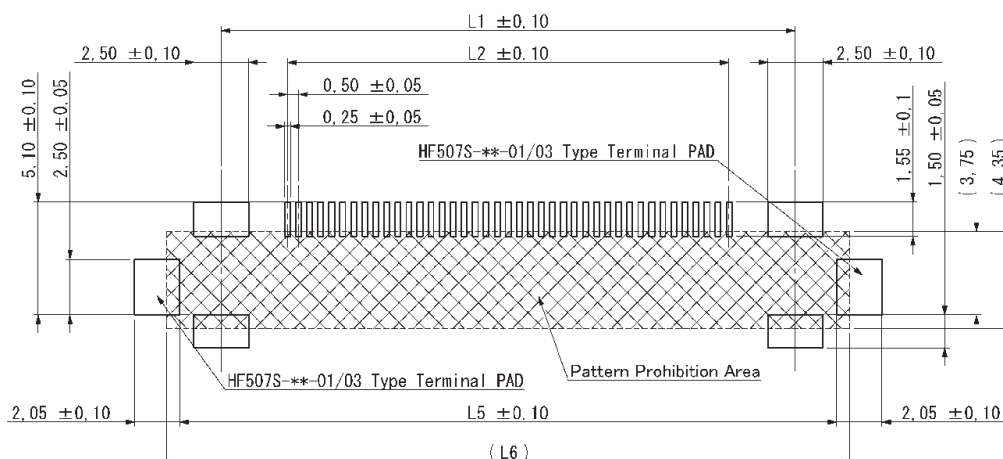
Outline Dimensions for 180° Socket



Orientation for 180° Socket



Recommended PCB Layout



Part Number	Pin Count	L1	L2	L3	L4	L5	L6
HF507S-21-0*	21	16.00	10.00	6.60	20.10	19.75	20.95
HF507S-31-0*	31	21.00	15.00	11.60	25.10	24.75	25.95
HF507S-41-0*	41	26.00	20.00	16.60	30.10	29.75	30.95
HF507S-51-0*	51	31.00	25.00	21.60	35.10	34.75	35.95

Mouser Electronics

Authorized Distributor

Click to View Pricing, Inventory, Delivery & Lifecycle Information:

[Yamaichi Electronics:](#)

[HF507P-41-04SH-TT1](#) [HF507P-51-04SH-TT1](#)