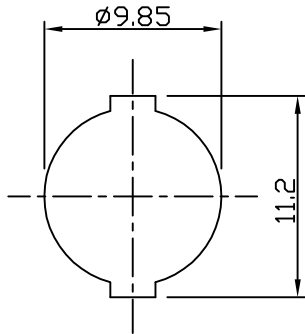
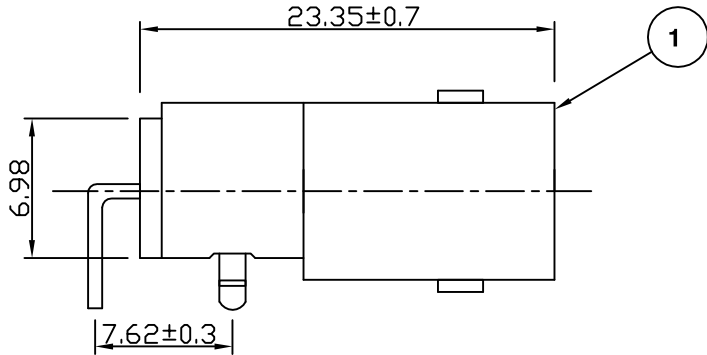
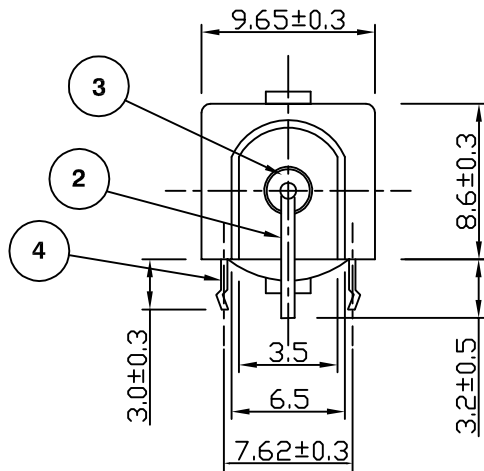
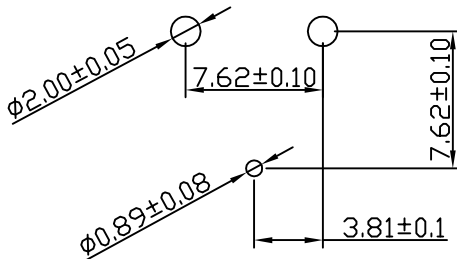


RoHS COMPLIANT



PANEL CUTOUT



PCB HOLE LAYOUT

Electrical Characteristics

Nominal Impedance:	50 ohms
Frequency Range:	DC to 4 GHz
Insertion Loss:	0.2 dB at 3 GHz
Operating Voltage (rms):	500 V maximum at sea level
Dielectric Withstand Voltage (rms):	1500 V maximum at sea level
Contact Resistance:	3.0 milliohms maximum
Insulation Resistance:	5000 megohms minimum

Mechanical Characteristics

Mating Cycles:	500 cycles minimum
Interface Dimensions:	Conform to MIL-C-39012

Environmental Characteristics

Temperature Range:	-55 °C to +85 °C
--------------------	------------------

	PART	DESCRIPTION
1	Connector Body	Nickel Plating Over Zinc Alloy
2	Center Contact	Phosphorus Bronze With Gold Plating At Contact Area, Tin Plating At Tail & Nickel Plating All Over
3	Instulator	Polupropylene (UL-94HB)
4	Mounting Post	Tin Plating Over Brass >5 Microns
Drawing update		JT 3 10 May 10
Checked And Updated		KA 2 14 Mar 08
CAD Issue		PDC 1 03 Jul 02
Adjusted		DH B 29 July 97
First Issue		DH A 25 July 97
DESCRIPTION OF REVISION		APPVD ISS DATE



Connectivity Solutions
7-13 Russel Way,
Widford Industrial Estate,
Chelmsford, Essex,
CM1 3AA, UK.
Tel: +44 (0) 1245 359515
Fax: +44 (0) 1245 358938

SCALE: Not To Scale	DRAWN BY:	P D Couzens
DIMENSIONS: mm	CHECKED BY:	S Nash
TOLERANCES: ± 0.2mm unless otherwise stated	APPROVED BY:	P D Couzens
	DATE:	03 Jul 02

TITLE:	PART NUMBER:
Shielded BNC Right Angle PCB Mount Jack Low Profile	VBM221
	PAGE: 1 of 1