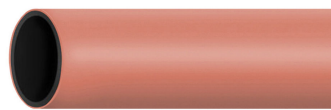


CX3799921 | 200T110 EMPTY DUCT COEX

ConQuest® Empty Conduit, 2 in, SDR 11, terracotta



Product Classification

Product Type	Empty conduit
Product Brand	ConQuest®

General Specifications

Color	Terracotta
Conduit Type	Non-toneable
Density Test Method	ASTM D792A
Density, maximum	0.955 g/cm ³ 0.035 lb/in ³
Density, minimum	0.941 g/cm ³ 0.034 lb/in ³
Design Standard	ASTM D3350-05
Wall Type	Smooth

Dimensions

Length	762 m 2500 ft
Inner Diameter, nominal	48.692 mm 1.917 in
Outer Diameter, nominal	60.325 mm 2.375 in
Wall Thickness Designation	SDR 11
Wall Thickness, minimum	5.486 mm 0.216 in
Nominal Size	2 in

Material Specifications

Flexural Modulus, minimum	551.581 N/mm ² 80000 psi
Flexural Property Test Method	ASTM D790
Hydrostatic Design Basis	Not pressure rated
Hydrostatic Design Test Method	ASTM D2837

CX3799921 | 200T110 EMPTY DUCT COEX

Material Type	High density polyethylene (HDPE)
Melt Flow Rate Test Method	ASTM D1238
Melt Flow Rate, maximum	0.39 g/10 min

Mechanical Specifications

Minimum Bend Radius, unsupported	660.4 mm 26 in
Tensile Property Test Method	ASTM D638
Tensile Strength at yield, minimum	20.684 N/mm ² 3000 psi
Pulling Tension, maximum	1,408.404 kg 3105 lb

Environmental Specifications

Environmental Stress Crack Resistance	Failure rate of 10% within 96 hours
Environmental Stress Test Method	ASTM D1693, ESCR Condition B

Packaging and Weights

Weight, net	952.425 kg/km 640 lb/kft
-------------	----------------------------

Regulatory Compliance/Certifications

Agency	Classification
ISO 9001:2015	Designed, manufactured and/or distributed under this quality management system



* Footnotes

Environmental Stress Crack Resistance	ESCR—e Environmental Stress Crack Resistance
---------------------------------------	--