

Distributed by:

JAMECO[®]
ELECTRONICS

www.Jameco.com ♦ 1-800-831-4242

The content and copyrights of the attached
material are the property of its owner.

Jameco Part Number 78327

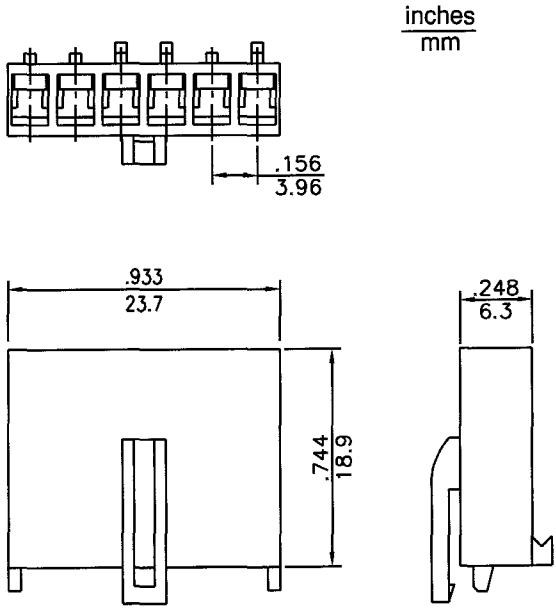
.156"(3.96mm) pitch Wire to Board Connectors

CH392-06 Series

- * Poles:6
- * Material:NYLON 66 UL94V-2 White
- * Suitable CT393 series terminal
- * Mates with CW392X-06,12 series wafer

Specifications

- * Current rating: 7A AC, DC
- * Voltage rating: 250V AC, DC
- * Temperature range: -25°C~+85°C
- * Insulation resistance: 1,000MΩ min.
- * Withstand voltage: 1500V AC/minute



Old item no. JS-1138-PB-R

ROHS

.156"(3.96mm) pitch single row wafer

CW392 Series

- * Poles:6,12
- * Material:NYLON 66 UL94V-2 White
- * Contact:Brass,Tin plated 60u"
- * Mates with CH392-06 series housing

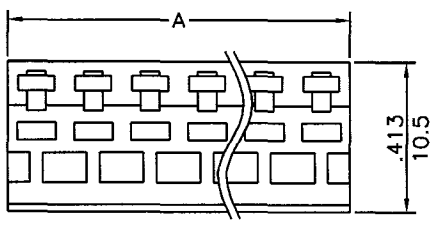
Specifications

- * Current rating: 7A AC, DC
- * Voltage rating: 250V AC, DC
- * Temperature range: -25°C~+85°C
- * Insulation resistance: 1,000MΩ min.
- * Withstand voltage: 1500V AC/minute
- * Applicable PC board thickness: .063" (1.6mm)

ORDERING CODE

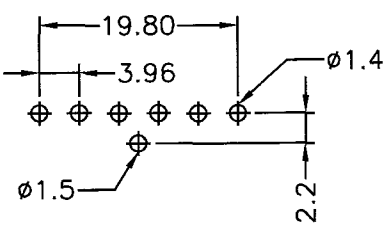
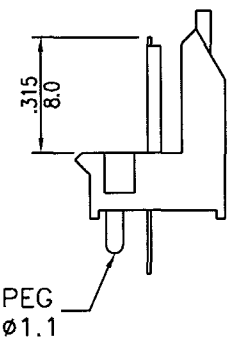
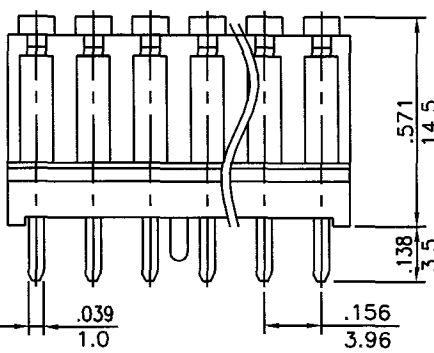
CW392A - XX T - A
1 2 3 4

- 1 SERIES NO.
CW392 SERIES=WITHOUT PEG
CW392ASERIES=WITH PEG
- 2 NO.OF CONTACTS.
- 3 CONTACT PLATED
T=TIN OVER NICKEL (STANDARD)
G=GOLD FLASH/TIN
GF=GOLD FLASH
- 4 PACKAGING
A=TRAY



inches
mm

CIRCUITS	DIM.A
6	23.8±0.20
12	47.5±0.40



P.C.B. LAYOUT