

REMARK:

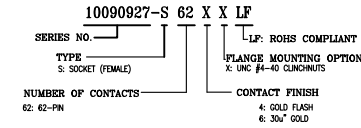
1.CHARACTERISTICS:

RATED VOLTAGE: 250V
RATED CURRENT: 2.5AMP
CONTACT RESISTANCE: 25mohms MAX(40mohms MAX FOR AFTER TEST).
INSULATION RESISTANCE: 5000Mohms MIN.at 500V DC
DIELECTRIC STRENGTH: 750VRMS
OPERATING TEMPERATURE RANGE: -55°C~105°C
INSERTION/EXTRACTION FORCE PER CONTACT: 5N Max./0.2N Min.
MATING/UNMATING CYCLES: 200MATING MIN FOR GOLD-FLASH
500MATING MIN FOR 30u" GOLD.

2.MATERIAL:

INSULATORS: THERMOPLASTIC G.F(UL94V-0) BLACK
CONTACTS: COPPER ALLOY, GOLD(G/F or 30u") TOP OVER CONTACT AREA,
100u" Min MATTE TIN TOP OVER SOLDER AREA,
50u" Min NICKEL UNDER PLATE.
SHELL: CARBON STEEL, 100u" Min NICKEL TOP OVER,
50u" Min COPPER UNDER PLATE.
Z BRACKET: COPPER ALLOY, 100u" Min MATTE TIN PLATED.
SCREW LOCK: COPPER ALLOY, 50u" Min NICKEL PLATED.

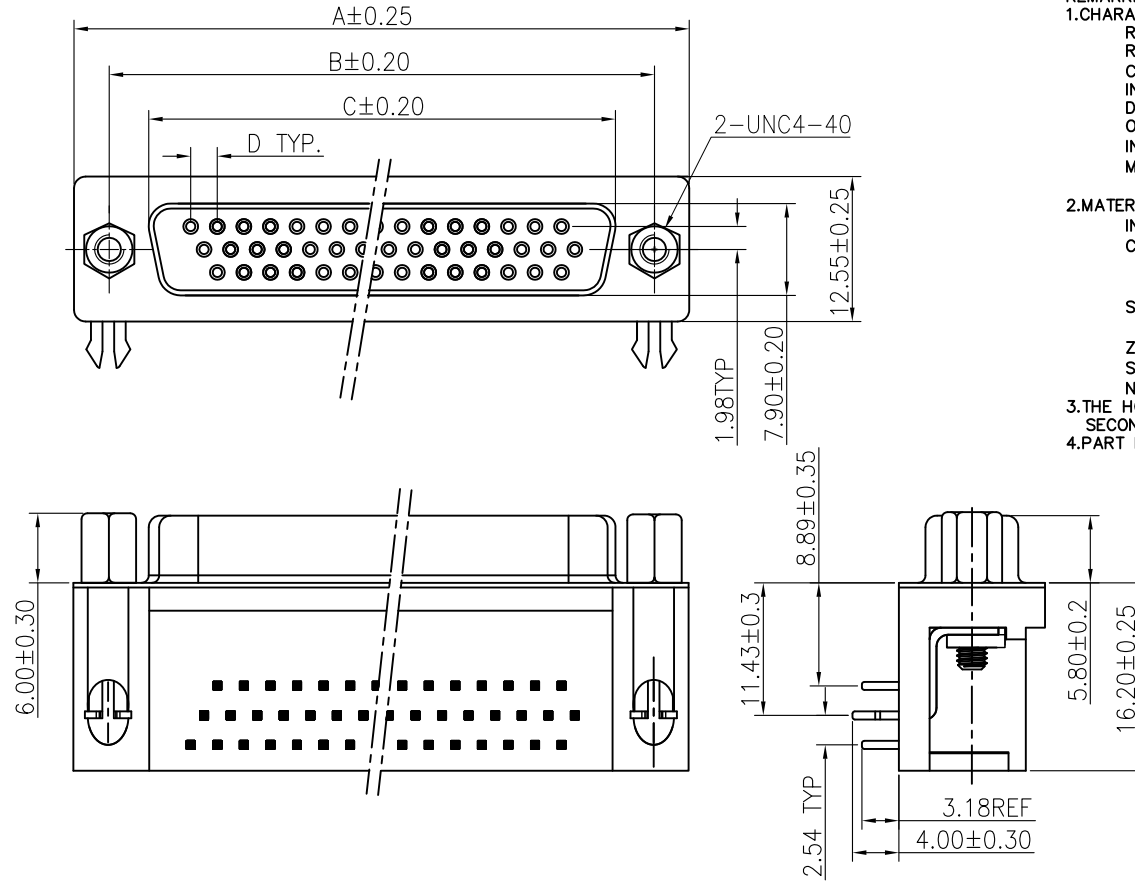
3.THE HOUSING WILL WITHSTAND EXPOSURE TO 260° PEAK TEMPERATURE FOR 5 SECONDS IN A WAVE SOLDERING APPLICATION WITH A 1.6MM THICK PC BOARD.
4.PART NUMBER DESCRIPTION:



POS.	PART NO.		THREAD TYPE	
62P	10090927-S	62	UNC	#4-40
POS.	A	B	C	D
62P	69.32	63.50	54.84	2.41

mat'l. code				tolerances unless otherwise specified		CUSTOMER COPY		FCI	
ltr	ecn no	dr	date	linear	.X ± 0.38	projection	title	www.fciconnect.com	
A	T09-1156	J.H	12/10/09		.XX ± 0.25				
B	T10-0164	J.H	10/19/10		.XXX ± 0.10				
C	ELX-I-15500	A.B	2013/08/21	angles	0° ± 2°				
				dr	JASON HSU 10/19/10				
				enr	ALIAS BABU 2013/08/21				
				chr	MITHUN PAUL 2013/08/21				
				appd	BIJU.K.PAUL 2013/08/21				
sheet index	revision	C	C	C	C	scale	1:1	product family	code
	sheet	1	2	3	4			D-SUB	TWN
								size	sheet
								10090927	1 of 4

P.C.B LAYOUT(FOR 62P)



REMARK:

1.CHARACTERISTICS:

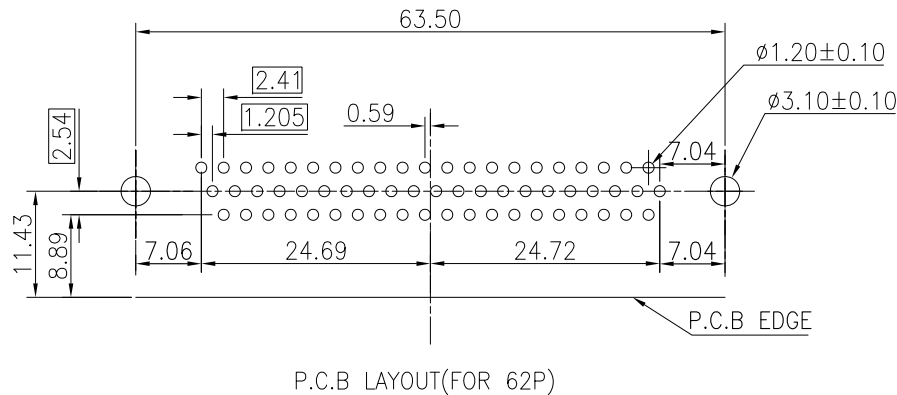
RATED VOLTAGE: 250V
 RATED CURRENT: 2.5AMP
 CONTACT RESISTANCE: 25mohms MAX(40mohms MAX FOR AFTER TEST).
 INSULATION RESISTANCE: 5000Mohms MIN.at 500V DC
 DIELECTRIC STRENGTH: 750VRMS
 OPERATING TEMPERATURE RANGE: $-55^{\circ}\text{C} \sim 105^{\circ}\text{C}$
 INSERTION/EXTRACTION FORCE PER CONTACT: 5N Max./0.2N Min.
 MATING/UNMATING CYCLES: 200MATINGS MIN FOR GOLD-FLASH
 500MATINGS MIN FOR 30u" GOLD.

2.MATERIAL:

INSULATORS: THERMOPLASTIC G.F(UL94V-0) BLACK
 CONTACTS: COPPER ALLOY,GOLD(G/F or 30u")TOP OVER CONTACT AREA,
 100u" Min MATTE TIN TOP OVER SOLDER AREA,
 50u" Min NICKEL UNDER PLATE.
 SHELL: CARBON STEEL,100u" Min NICKEL TOP OVER,
 50u" Min COPPER UNDER PLATE.
 Z BRACKET :COPPER ALLOY,100u" Min MATTE TIN PLATED.
 SCREW LOCK :COPPER ALLOY ,50u" Min NICKEL PLATED.
 NUT: COPPER ALLOY ,50u" Min NICKEL PLATED.

3.THE HOUSING WILL WITHSTAND EXPOSURE TO 260° PEAK TEMPERATURE FOR 5 SECONDS IN A WAVE SOLDERING APPLICATION WITH A 1.6MM THICK PC BOARD.
 4.PART NUMBER DESCRIPTION:

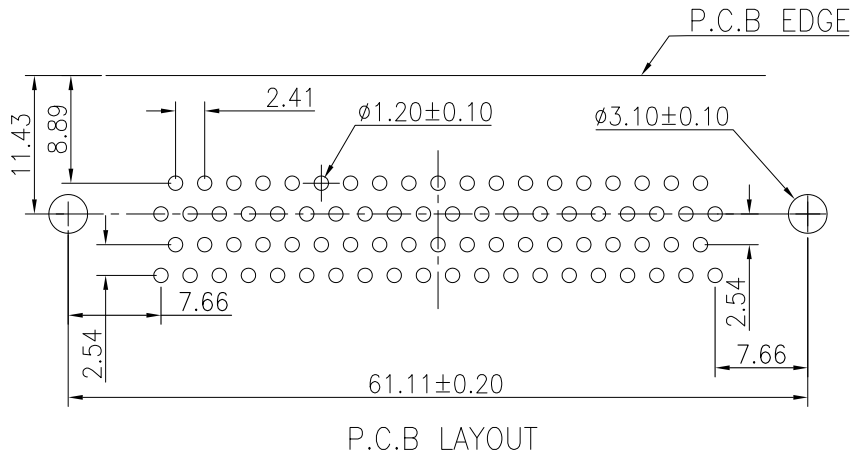
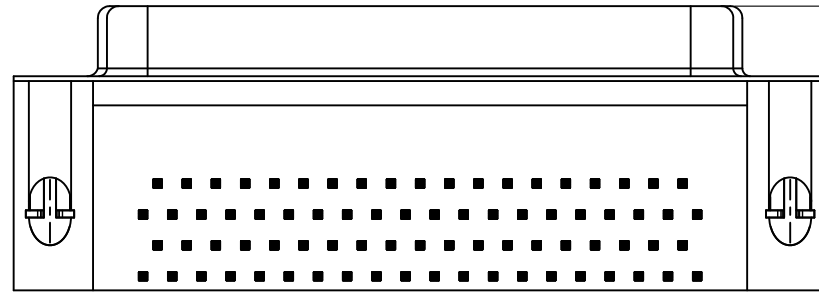
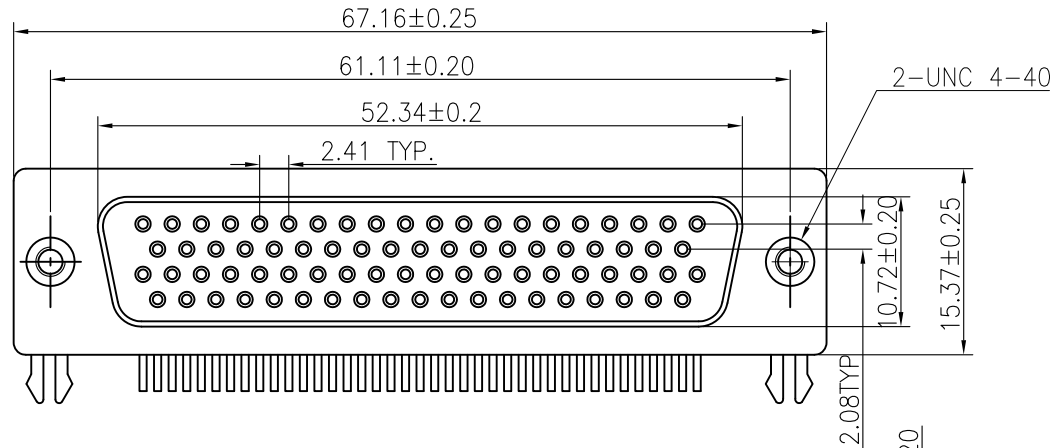
10090927-S	62	X	V	LF
SERIES NO.	TYPE	S: SOCKET (FEMALE)	LF: ROHS COMPLIANT	PLATE MOUNTING OPTION
NUMBER OF CONTACTS	62: 62-PIN	CONTACT FINISH	4: GOLD FLASH	6: 30u" GOLD



POS.	PART NO.	A	B	C	D	E	F
62P	10090927-S62*VLF	69.32	63.50	54.84	2.41	7.03	8.21

mat'l. code				tolerances unless otherwise specified		CUSTOMER COPY		FCI	
ltr	ecn no	dr	date	linear	.X ± 0.38	projection	title	www.fciconnect.com	
C					.XX ± 0.25				
					.XXX ± 0.10				
				angles	0° $\pm 2^{\circ}$				
				dr	JASON HSU 10/19/10				
				engr	ALIAS BABU 2013/08/21				
				chr	MITHUN PAUL 2013/08/21				
				appd	BIJU.K.PAUL 2013/08/21				
sheet index	revision sheet								

product family	D-SUB	code
size	dwg no	TWN
scale	1:1	sheet 2 of 4
A4	10090927	



REMARK:

1.CHARACTERISTICS:

RATED VOLTAGE: 250V
 RATED CURRENT: 2.5AMP
 CONTACT RESISTANCE: 25mohms MAX(40mohms MAX FOR AFTER TEST).
 INSULATION RESISTANCE: 5000Mohms MIN.at 500V DC
 DIELECTRIC STRENGTH: 750VRMS
 OPERATING TEMPERATURE RANGE: -55°C~105°C
 INSERTION/EXTRACTION FORCE PER CONTACT:5N Max./0.2N Min.
 MATING/UNMATING CYCLES:200MATINGS MIN FOR GOLD-FLASH
 500MATINGS MIN FOR 30u" GOLD .

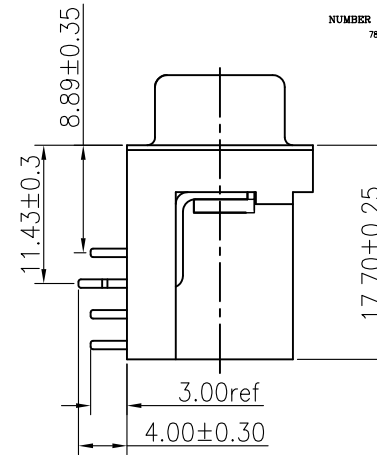
2.MATERIAL:

INSULATORS: THERMOPLASTIC G.F(UL94V-0) BLACK
 CONTACTS: COPPER ALLOY,GOLD(G/F or 30u")TOP OVER CONTACT AREA,
 100u" Min MATTE TIN TOP OVER SOLDER AREA,
 50u" Min NICKEL UNDER PLATE.
 SHELL: CARBON STEEL,100u" Min NICKEL TOP OVER,
 50u" Min COPPER UNDER PLATE.
 Z BRACKET: COPPER ALLOY,100u" Min MATTE TIN PLATED.
 SCREW LOCK: COPPER ALLOY ,50u" Min NICKEL PLATED.

3.THE HOUSING WILL WITHSTAND EXPOSURE TO 260° PEAK TEMPERATURE FOR 5 SECONDS IN A WAVE SOLDERING APPLICATION WITH A 1.6MM THICK PC BOARD.

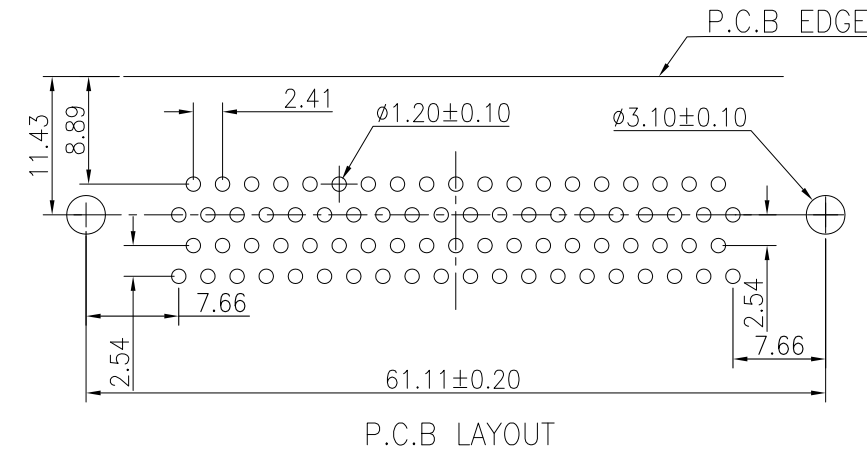
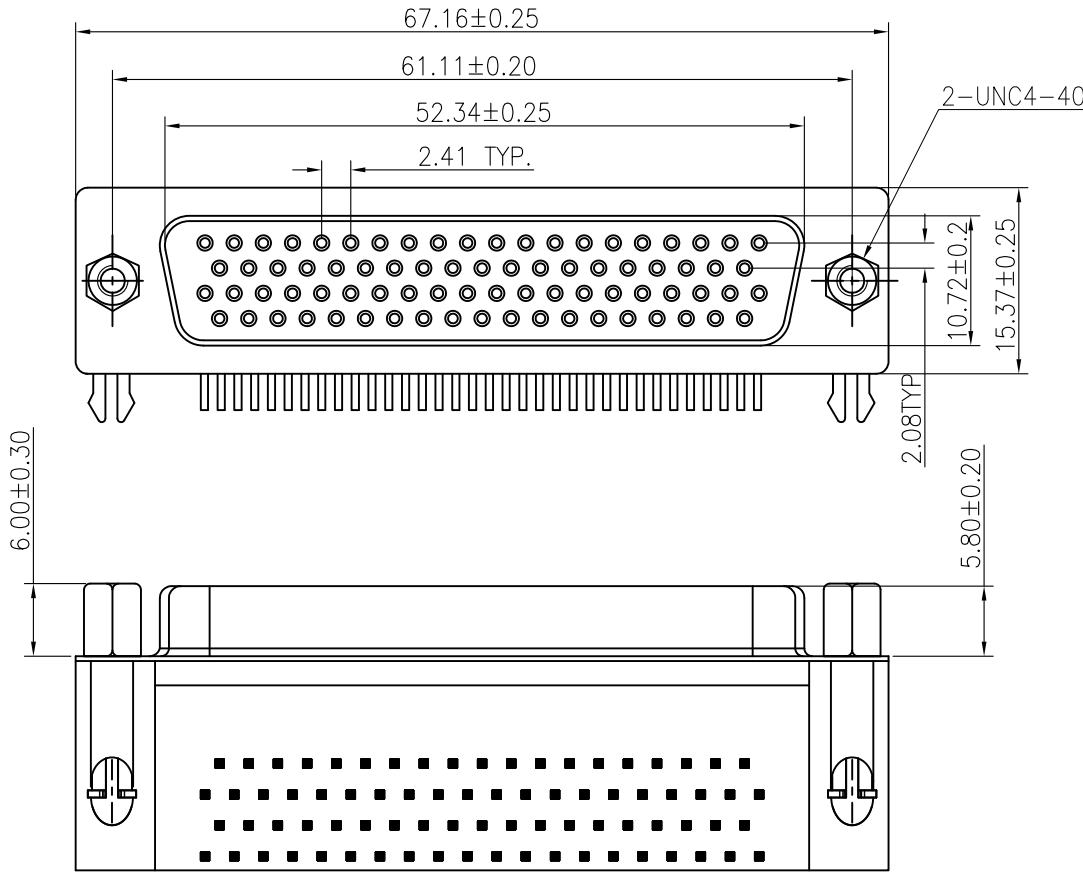
4.PART NUMBER DESCRIPTION:

10090927-S 78 X X LF
 SERIES NO. _____
 TYPE _____
 S: SOCKET (FEMALE)
 NUMBER OF CONTACTS _____
 78: 78-PIN
 L: LF: ROHS COMPLIANT
 PLANGE MOUNTING OPTION
 X: UNC #4-40 CLINCHNUTS
 CONTACT FINISH
 4: GOLD FLASH
 6: 30u" GOLD



POS.	PART NO.	THREAD TYPE
78P	10090927-S78*XL	UNC #4-40

mat'l. code				tolerances unless otherwise specified		CUSTOMER COPY		FCI	
ltr	ecn no	dr	date	linear	.X ± 0.38 .XX ± 0.25 .XXX ± 0.10 0° ±2°	projection		title	www.fciconnect.com
C				angles				H/D D-SUB FEMALE RIGHT-ANGLE	
				dr	JASON HSU 10/19/10	MM		product family D-SUB	code
				enr	ALIAS BABU 2013/08/21			size dwg no	TWN
				chr	MITHUN PAUL 2013/08/21	scale		10090927	sheet
				appd	BIJU.K.PAUL 2013/08/21	1:1	A4		3 of 4
sheet index	revision sheet								



REMARK:

1.CHARACTERISTICS:

RATED VOLTAGE: 250V
RATED CURRENT: 2.5AMP
CONTACT RESISTANCE: 25mohms MAX(40mohms MAX FOR AFTER TEST).
INSULATION RESISTANCE: 5000Mohms MIN.at 500V DC
DIELECTRIC STRENGTH: 750VRMS
OPERATING TEMPERATURE RANGE: -55°C~105°C
INSERTION/EXTRACTION FORCE PER CONTACT: 5N Max./0.2N Min.
MATING/UNMATING CYCLES: 200MATINGS MIN FOR GOLD-FLASH
500MATINGS MIN FOR 30u" GOLD .

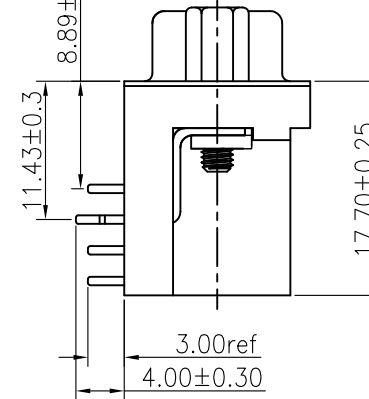
2.MATERIAL:

INSULATORS: THERMOPLASTIC G.F(UL94V-0) BLACK
CONTACTS: COPPER ALLOY,GOLD(G/F or 30u")TOP OVER CONTACT AREA,
100u" Min MATTE TIN TOP OVER SOLDER AREA,
50u" Min NICKEL UNDER PLATE.
SHELL: CARBON STEEL,100u" Min NICKEL TOP OVER,
50u" Min COPPER UNDER PLATE.
Z BRACKET: COPPER ALLOY,100u" Min MATTE TIN PLATED.
SCREW LOCK: COPPER ALLOY ,50u" Min NICKEL PLATED.
NUT: COPPER ALLOY ,50u" Min NICKEL PLATED.

3.THE HOUSING WILL WITHSTAND EXPOSURE TO 260° PEAK TEMPERATURE FOR 5 SECONDS IN A WAVE SOLDERING APPLICATION WITH A 1.6MM THICK PC BOARD.

4.PART NUMBER DESCRIPTION:

10090927-S 78 X V LF
SERIES NO. 10090927
TYPE S: SOCKET (FEMALE)
NUMBER OF CONTACTS 78: 78-PIN
LP: ROHS COMPLIANT
FLANGE MOUNTING OPTION
V: UNC #4-40 SCREWLOCKS
CONTACT FINISH
4: GOLD FLASH
6: 30u" GOLD



PART NO.: 10090927-S78*VLF

mat'l. code				tolerances unless otherwise specified		CUSTOMER COPY		FCI	
ltr	ecn no	dr	date	linear	.X ± 0.38 .XX ± 0.25 .XXX ± 0.10 0° ± 2°	projection	title	www.fciconnect.com	
C				angles			H/D D-SUB FEMALE RIGHT-ANGLE		
				dr	JASON HSU 10/19/10	MM	product family D-SUB	code	
				enr	ALIAS BABU 2013/08/21	scale	size dwg no	TWN	
				chr	MITHUN PAUL 2013/08/21	1:1	A4	10090927	sheet 4 of 4
				appd	BIJU.K.PAUL 2013/08/21				
sheet index	revision sheet								