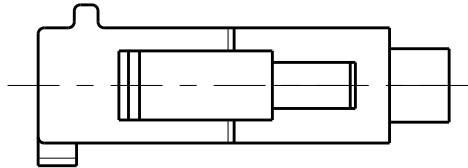
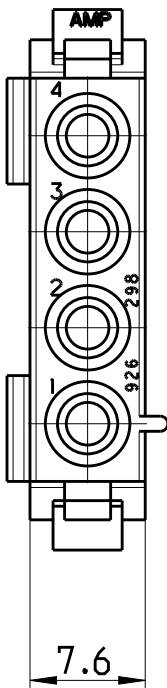
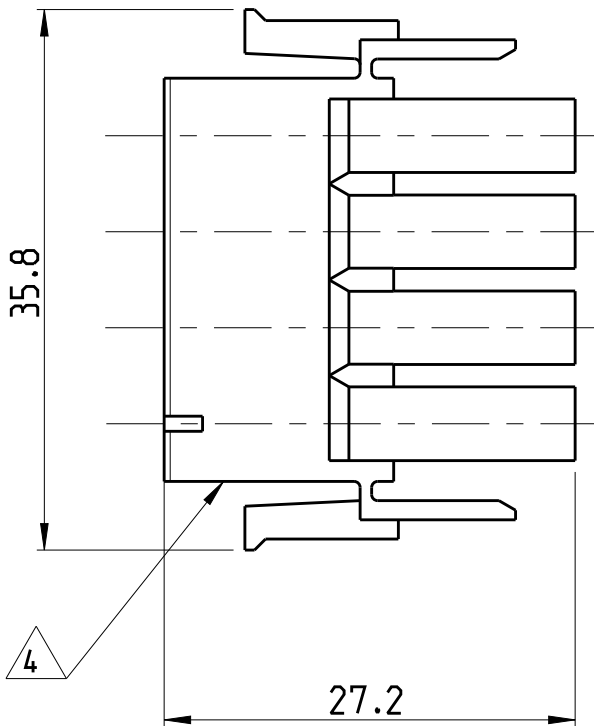
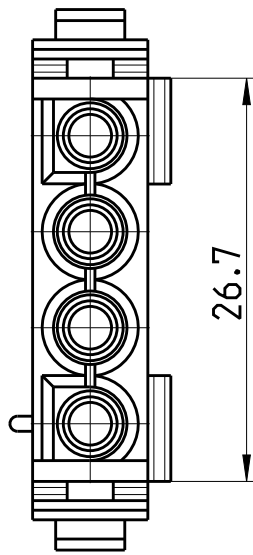




LOC	DIST	REVISIONS					
		P	LTR	DESCRIPTION	DATE	DWN	APVD
			F7	REVISED PER ECR-17-014951	16OCT2017	BDA	KR

- 1 NEUES MATERIAL (PHOSPHOR UND HALOGEN FREI)
- 2 MATERIAL CORRESPONDING TO THE REQUIREMENT OF IEC60335-1 (INCL. GWT 750 °C WITHOUT FLAME)
- 3 COLOR OF HOUSINGS MAY RANGE FROM CLEAR TO GREEN OR YELLOW DUE TO HYGROSCOPIC NATURE OF RESIN.HOWEVER IT DOESN'T AFFECT THE FORM, FIT AND FUNCTION OF THE PRODUCT.
- 4 CSA CERTIFICATION LOGO LOCATED AT LEAST ONE SIDE OF THE HOUSING APPROXIMATELY AS SHOWN.
- 5 DIMENSIONS SHOWN REPRESENT PRODUCT IN DRY, AS MOLDED, CONDITION. ADDITIONAL 2% GROWTH DUE TO SUBSEQUENT MOISTURE ABSORPTION MAY OCCUR AND SHOULD BE ACCOUNTED FOR.



926298-7	PA66 UL94 V-0 NATURAL	2
926298-6	PA6.6 UL94 V2 NATURAL	2
926298-5	PA 6.6 UL94 V2 NATURAL	
926298-4	PA6.6 UL94 V-0 weiß	
926298-3	PA6.6 UL94 V-0 NATURAL	
926298-2	PA6.6 UL94 V-0 SCHWARZ	1
926298-1	PA66 UL94 V-2 NATURAL	3
PART NUMBER MATERIAL		

THIS DRAWING IS A CONTROLLED DOCUMENT.		DWN KKB CHK KKB APVD RRP	10FEB2014 10FEB2014 10FEB2014	 TE Connectivity				
DIMENSIONS: mm		TOLERANCES UNLESS OTHERWISE SPECIFIED: 0 PLC ± 1 PLC ±0.2 2 PLC ± 3 PLC ± 4 PLC ± ANGLES ± FINISH		NAME UNIVERSAL MATE-N-LOK 4 WAY PLUG -				
								
MATERIAL REFER TABLE -		PRODUCT SPEC 108-1031 APPLICATION SPEC 114-18011 WEIGHT -		SIZE A2	CAGE CODE -	DRAWING NO C=926298	RESTRICTED TO -	
		CUSTOMER DRAWING				SCALE 2:1	SHEET 1 OF 1	REV F7