

30

ISSUE

32EN1-6

DRAWING NUMBER

M

RELEASE NO. SR5372

REPLACES

CHECK

REVISIONS

A	CO	76965
G	R	7 DEC 93
B	CO	78255
M	AM	31 AUG 94
C	CO	83019
J	A	3 OCT 96

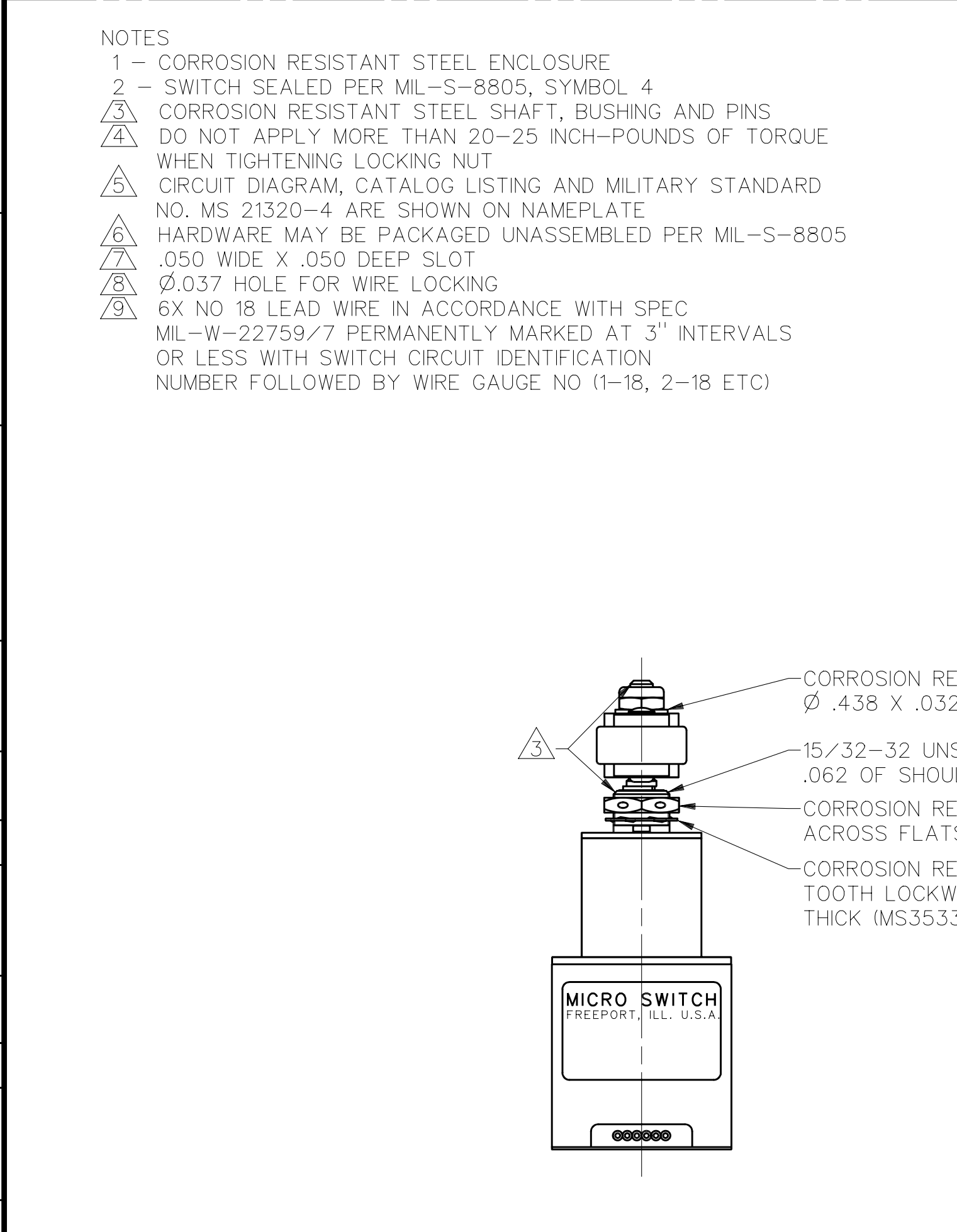
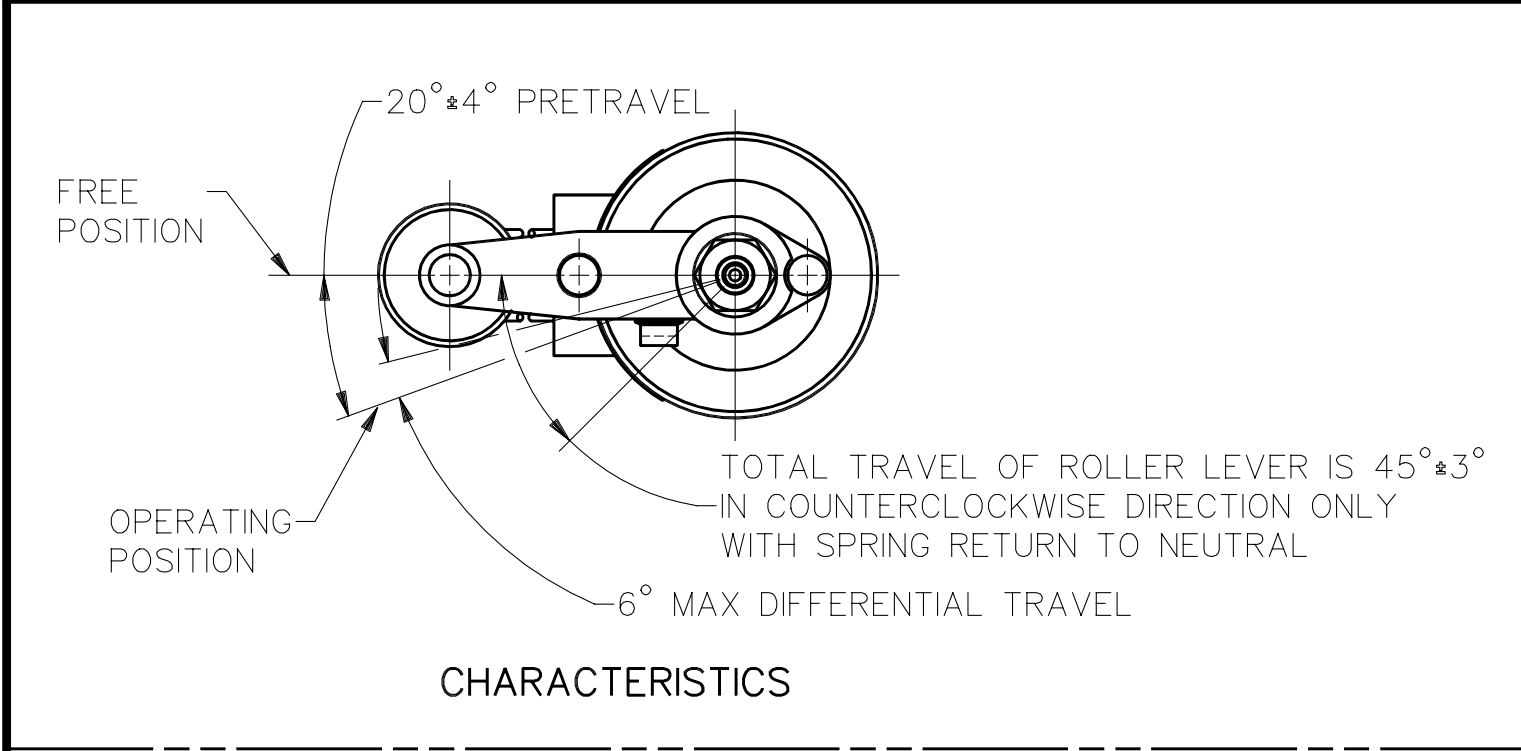
DDM/CAD

DRAWN

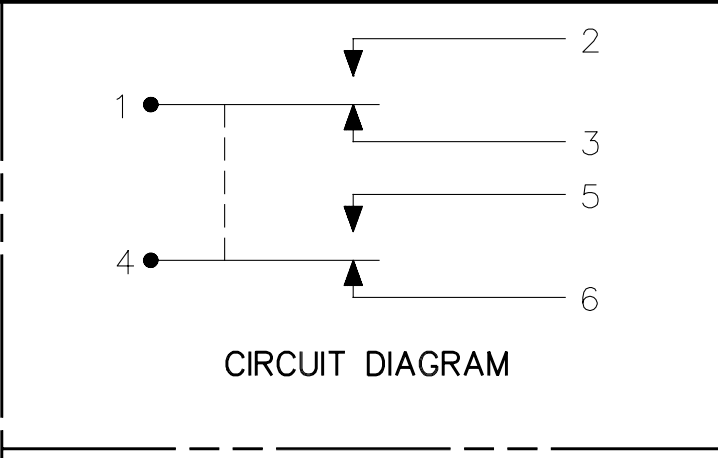
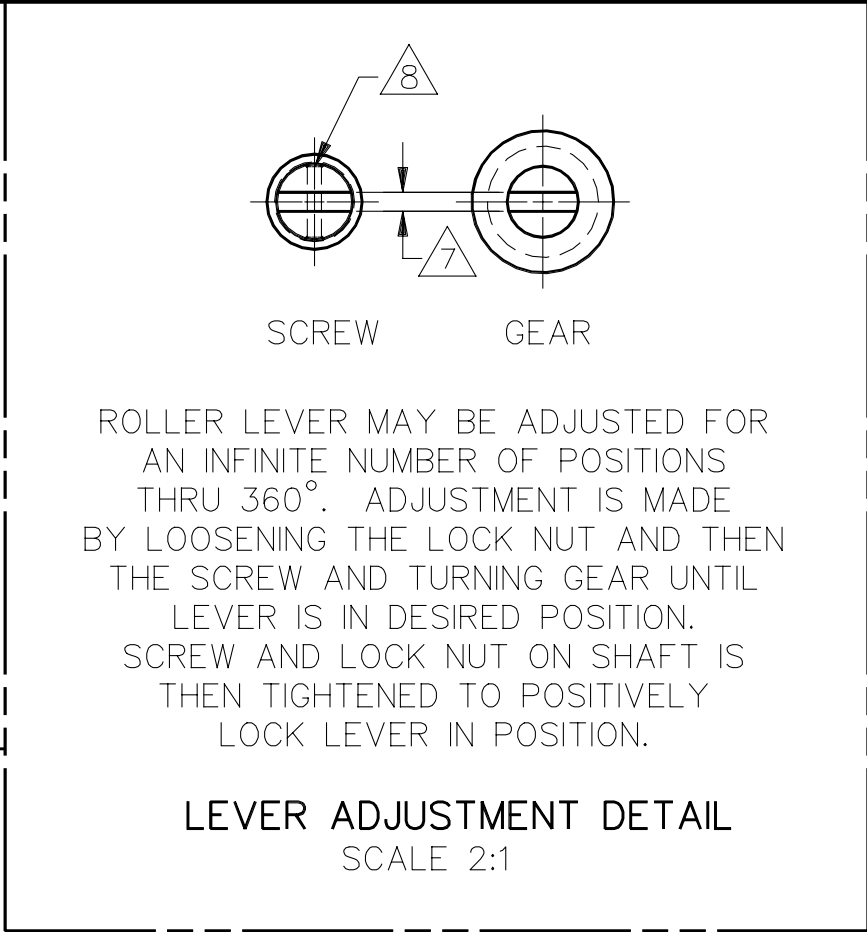
GRT

7 DEC 93

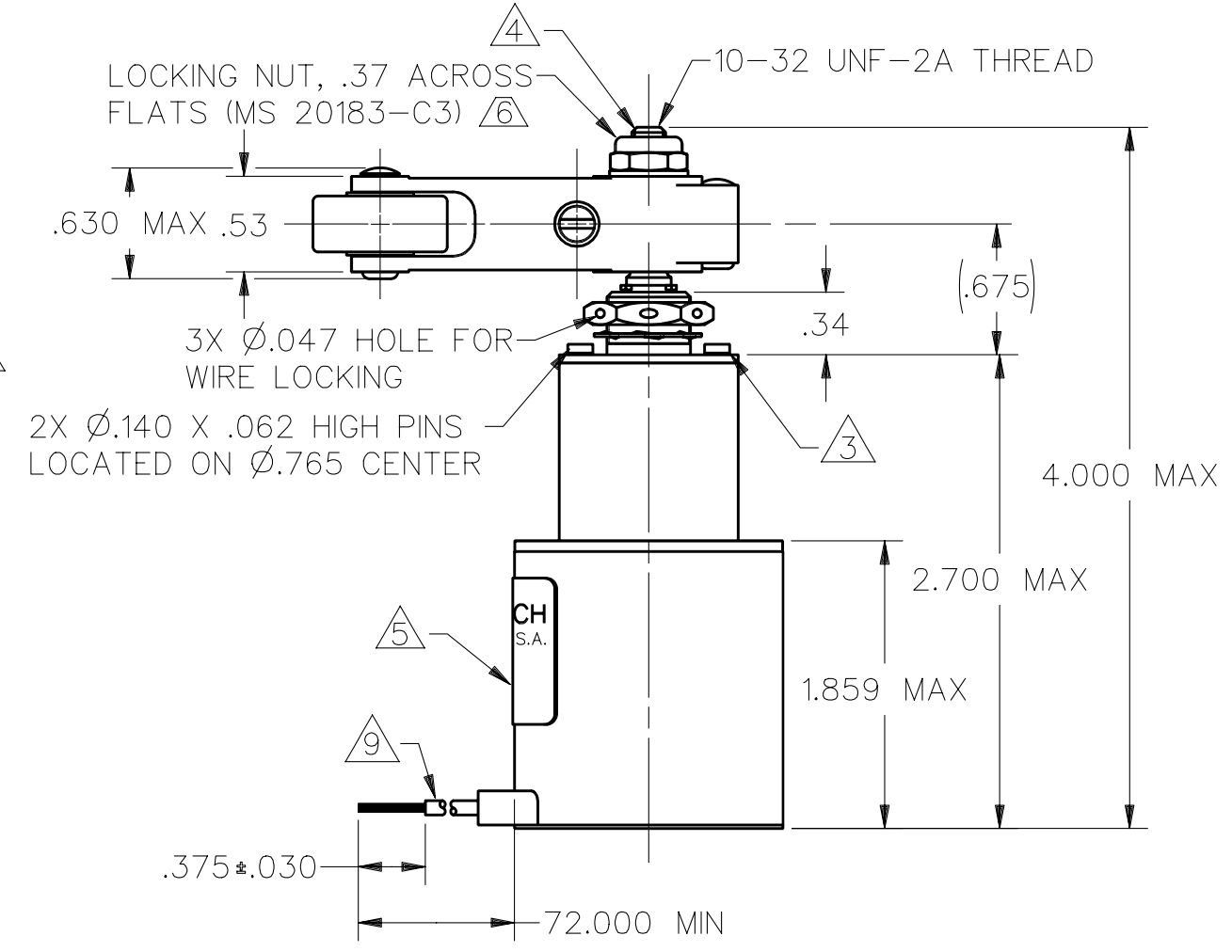
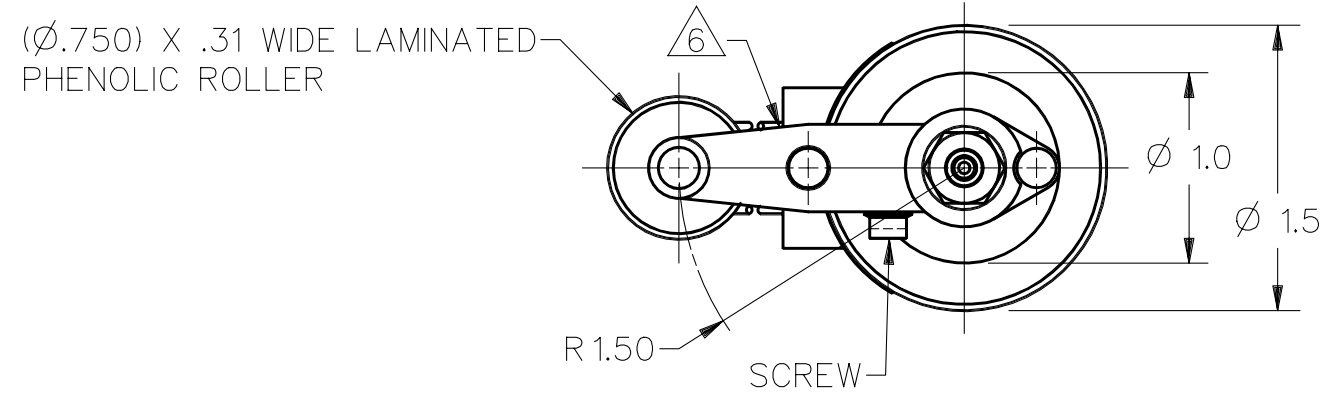
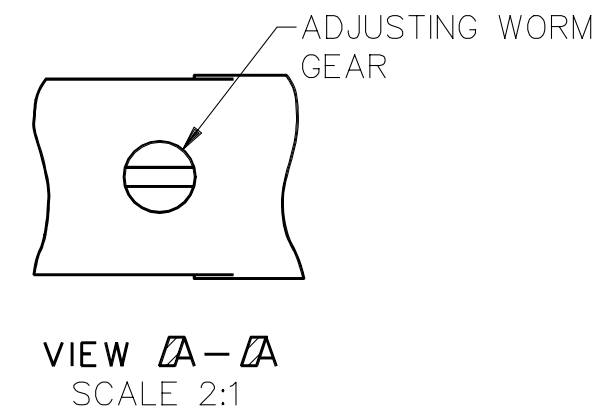
CHECK



CHARACTERISTICS		ELECTRICAL DATA	
OPERATING TORQUE — — — — 12-25 IN LB		CONTACT ARRANGEMENT (SEE CIRCUIT DIAGRAM)	
RELEASE TORQUE — — — — 4 IN LB MIN		28 VDC	
PRETRAVEL		LOAD	SEA LEVEL 50,000 FT
DIFFERENTIAL TRAVEL		RES	10 10
OVERTRAVEL		IND	6 3
FREE POSITION		MOTOR	6
FULL OVERTRAVEL TORQUE 40 IN-LB MAX			



M 32EN1-6



MASTER REDUCED
ANSI Y14.5M-1982 APPLIES

THIS DRAWING COVERS A PROPRIETARY ITEM AND IS THE PROPERTY OF MICRO SWITCH, A DIVISION OF HONEYWELL. THIS DRAWING IS NOT TO BE COPIED OR USED WITHOUT THE APPROVAL OF MICRO SWITCH.

MICRO SWITCH

a Honeywell Division

SWITCH-ENCLOSED

CATALOG LISTING

32EN1-6

MILITARY STD PART NUMBER MS21320-4

WEIGHT 15.5 OZ

THIRD ANGLE PROJECTION

SCALE FULL

DO NOT SCALE PRINT

UNLESS OTHERWISE SPECIFIED TOLERANCES ARE

ONE PLACE	(.0)	±.030
TWO PLACES	(.00)	±.015
THREE PLACES	(.000)	±.005
ANGLES		±