

# MBS48-SERIES

(DC line filter)



## Features

- 1) High attenuation for any noise from low frequency to high frequency by applying large capacity condenser for DC 48V power line  
Major application: Information and telecommunication equipment
- 2) Large stud terminal type  
Several wiring connections available
- 3) Cost saving design  
Compared with our current noise filter for the same capacity for AC input,  
Volume: Less than 30%  
Area occupation: Less than 45%

## CAUTION!

MBS48 series shall be noise filters for DC 48V power line only.  
Use for AC power line is not available.

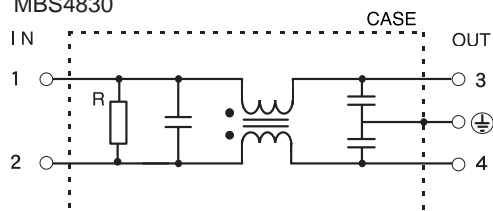
## Specifications

Item	Model	MBS4830	MBS4850	MBS4850S
1 Rated voltage (DC)		48V (72V DC max)		48V (76V DC max)
2 Rated current (DC)	(Note1)	30A	50A	50A
3 Overload durability (DC)	(Note1)	45A (150% of rated current: within 1 min.)		75A (150% of rated current: within 1 min.)
4 Test voltage	terminal to case, DC 1 minute	700V(20mA)at 25°C,70%RH		1500V(20mA)at 25°C,70%RH
	terminal to terminal, DC 1 minute	100V(20mA)at 25°C,70%RH		100V(20mA)at 25°C,70%RH
5 Isolation resistance (terminal to case, 500VDC)		500MΩmin. at 25°C,70%RH		
6 DC resistance		8mΩ	4mΩ	3mΩ
7 Temperature rise		35°C max.	30°C max.	40°C max.
8 Operating temperature		-25 ~ +85°C		-30 ~ +85°C
9 Operating humidity		30% ~ 95% RH (No dewdrop)		
10 Storage temperature		-40 ~ +85°C		-30 ~ +85°C
11 Storage humidity		10% ~ 95% RH (No dewdrop)		
12 Vibration		Sweep: 10 ~ 55 ~ 10 Hz(for 1 minute), Amplitude: 1.5 mm X,Y and conforms to Z axes for 2 hours		
13 Weight (typ)		310g	650g	310g

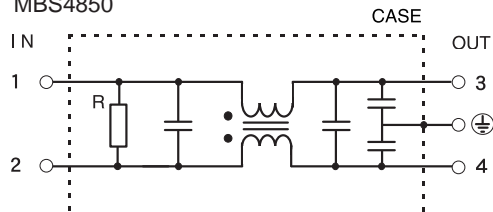
(Note1) : Value at Ta ≤ 50°C. Refer to the derating curve shown below at Ta > 50°C.

## Circuit

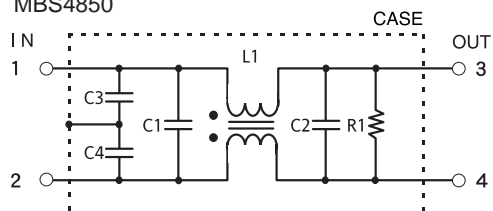
MBS4830



MBS4850

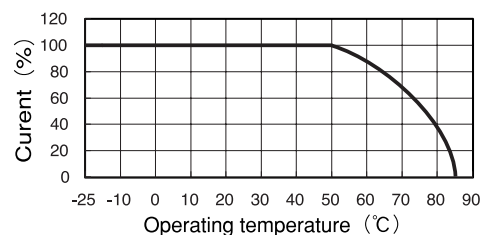


MBS4850S

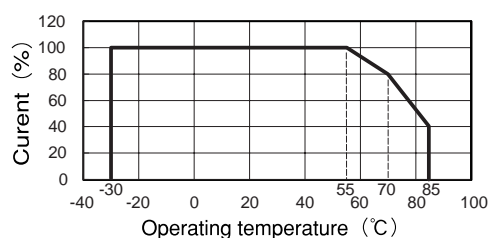


## Derating

MBS4830, MBS4850



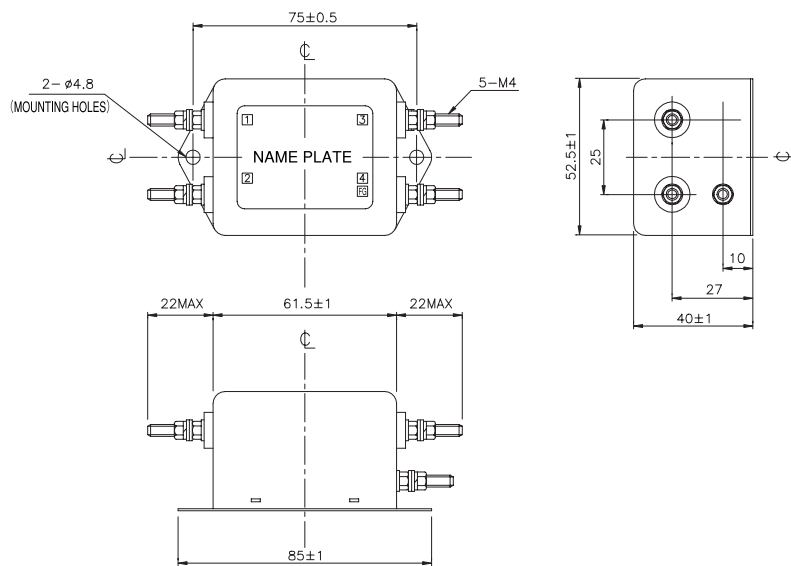
MBS4850S



- Request customer specification for further details of specifications, outline, characteristics, etc.  
Read the instruction manual before usage.
- Contact us about delivery before ordering.

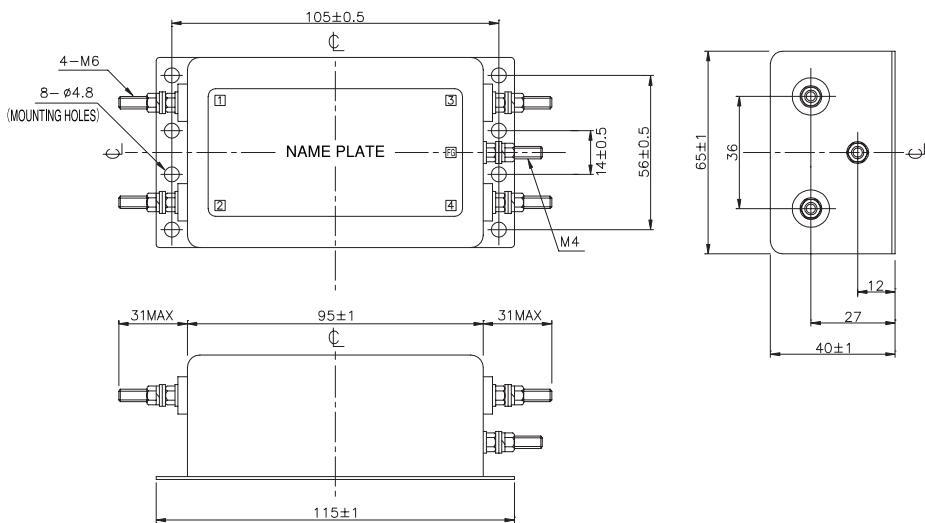
# MBS48-SERIES

MBS4830



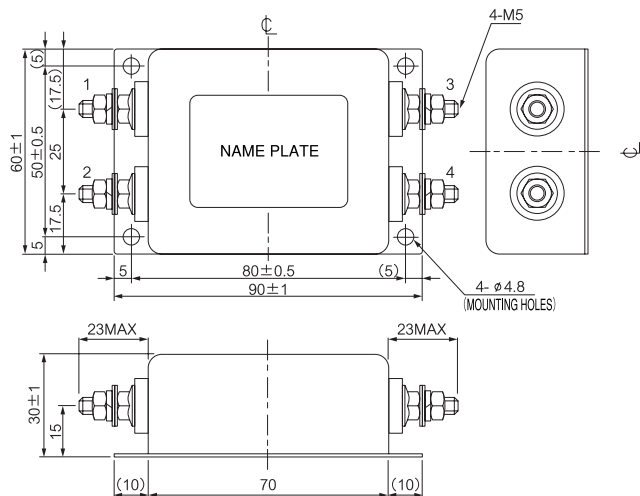
Case: Metal  
(Unit: mm)

MBS4850



Case: Metal  
(Unit: mm)

MBS4850



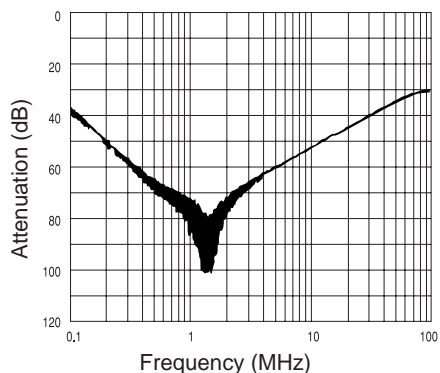
Case: Metal  
(Unit: mm)

## CHARACTERISTICS

### ■ Typical Insertion Loss

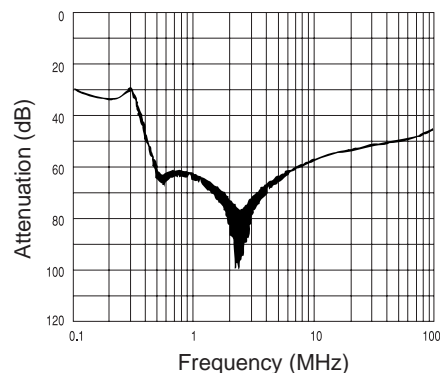
(1) Asymmetrical

#### ■ MBS4830

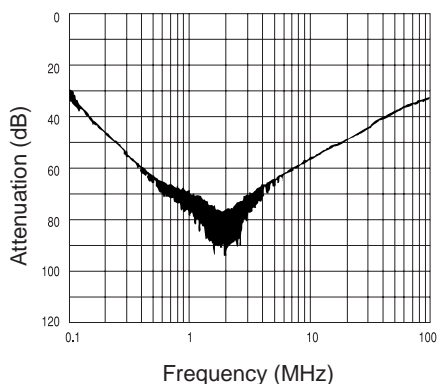


(2) Symmetrical

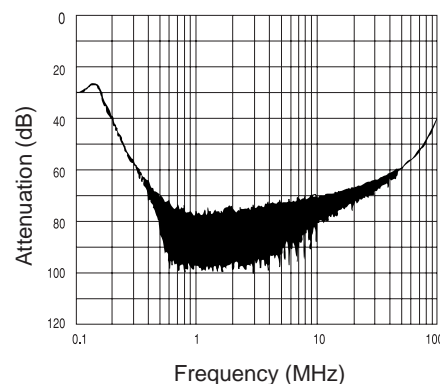
#### ■ MBS4830



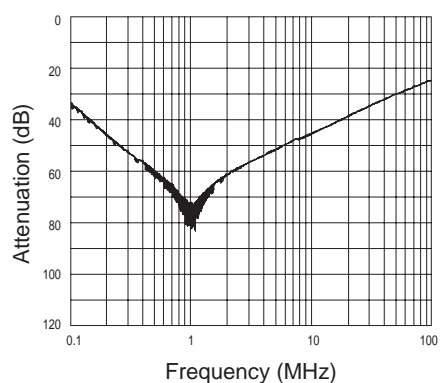
#### ■ MBS4850



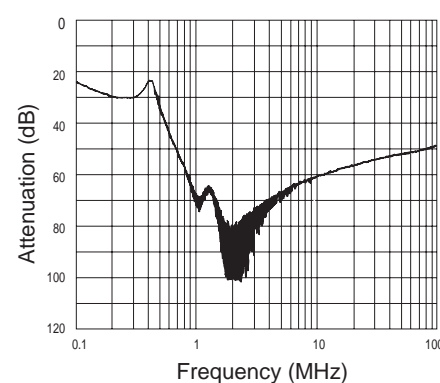
#### ■ MBS4850



#### ■ MBS4850S



#### ■ MBS4850S



### ■ Attenuation characteristics MBS4850

