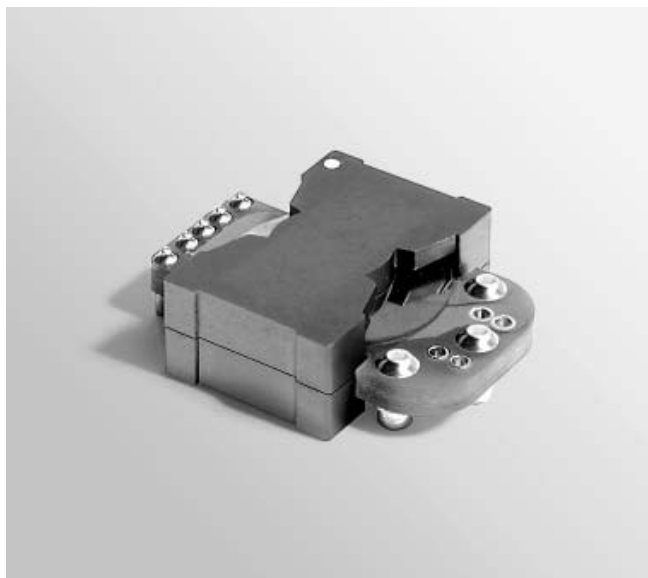


NEW!

SMT Planar Transformer – A9845-A



Coilcraft's surface mount planar transformers are ideal for applications that require high efficiency in a low-profile package. They are designed to perform in push-pull topologies operating at 200 – 300 kHz. The auxiliary winding can be used to control input current to PWMs.

Planar transformers offer high power densities along with great reliability and repeatability.

The A9845-A has a smaller footprint and lower profile than our other planar transformers. The circular windings provide very low DCR and excellent leakage inductance values.

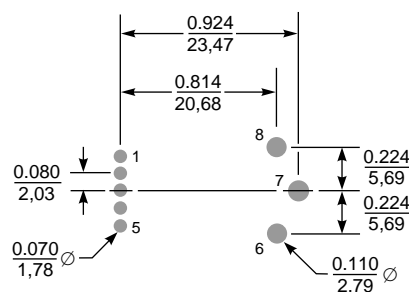
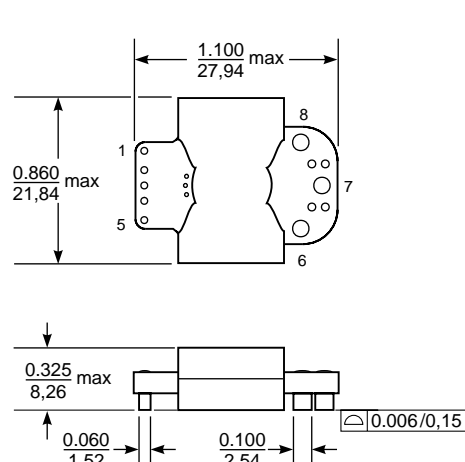
To complete your design, Coilcraft offers a wide variety of power inductors for use as input and output chokes. To request free evaluation samples, contact Coilcraft or visit www.coilcraft.com.

Part number	Output power (W)	Input voltage range (V)	Output voltage (V)	Output current (A rms)	Primary inductance ¹ min (mH)	Leakage inductance max (μH)	DCR max (Ohms)			Pri/sec isolation (Vrms)
							pri	sec	aux	
A9845-A	10	36 – 75	3.3	2.0	1.50	1.4	0.80	0.0085	0.120	1200

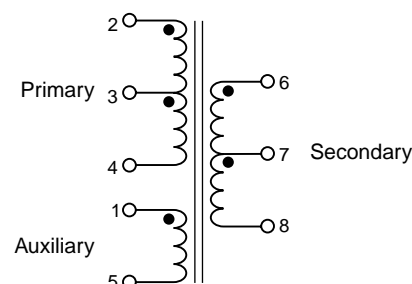
1. Inductance measured between pins 2 and 4 at 250 kHz, 0.1 Vrms, 0 Adc.

2. Storage and ambient operating temperature range: –40°C to +85°C.

3. Electrical specifications at 25°C.



**Recommended
Land Pattern**



Tape and reel: 250/13" reel 56 mm tape width

For packaging data see Tape and Reel Specifications section.

Coilcraft®

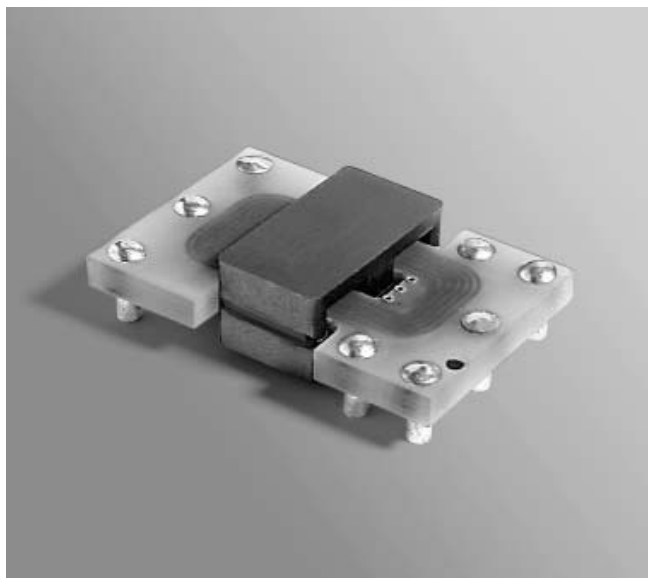
Specifications subject to change without notice. Document 345 Revised 10/28/03

1102 Silver Lake Road Cary, Illinois 60013 Phone 847/639-6400 Fax 847/639-1469

E-mail info@coilcraft.com Web <http://www.coilcraft.com>

NEW!

SMT Planar Transformer – A0027-A



Coilcraft's surface mount planar transformers are ideal for applications that require high efficiency in a low-profile package. Planar transformers offer high power densities along with great reliability and repeatability. The A0027-A is designed to perform in push-pull topologies operating at 200–300 kHz. The auxiliary winding can be used to control input current to PWMs.

To complete your design, Coilcraft offers a wide variety of power inductors for use as input and output chokes.

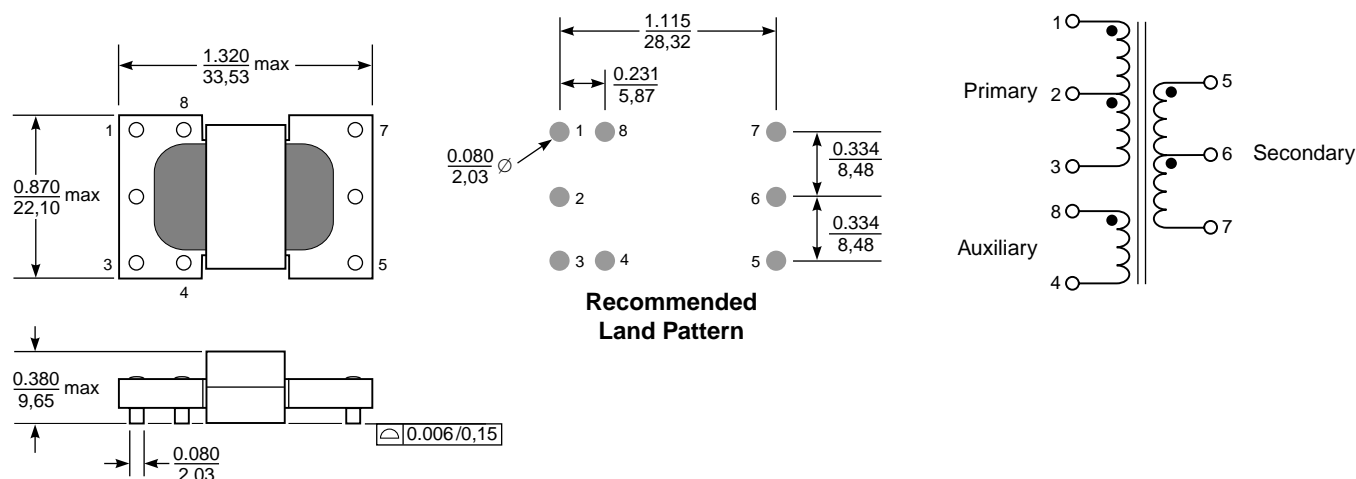
To request free evaluation samples, contact Coilcraft or visit www.coilcraft.com.

Part number	Output power (W)	Input voltage range (V)	Output voltage (V)	Output current (A rms)	Primary inductance ¹ min (mH)	Leakage inductance max (μH)	DCR max (Ohms)			Pri/sec isolation (Vrms)
							pri	sec	aux	
A0027-A	10	36–75	3.3	2.0	1.30	3.5	1.13	0.042	0.331	1500

1. Inductance measured between pins 1 and 3 at 250 kHz, 0.1 Vrms, 0 Adc.

2. Storage and ambient operating temperature range: –40°C to +85°C.

3. Electrical specifications at 25°C.



Tape and reel: 350/13" reel 56 mm tape width

For packaging data see Tape and Reel Specifications section.

Coilcraft®

Specifications subject to change without notice. Document 299 Revised 09/12/03

1102 Silver Lake Road Cary, Illinois 60013 Phone 847/639-6400 Fax 847/639-1469

E-mail info@coilcraft.com Web <http://www.coilcraft.com>