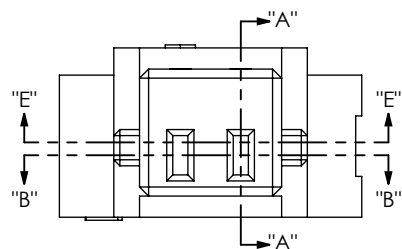
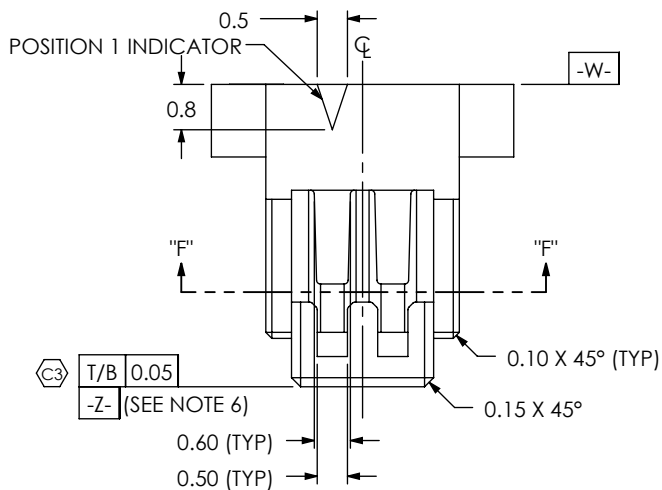
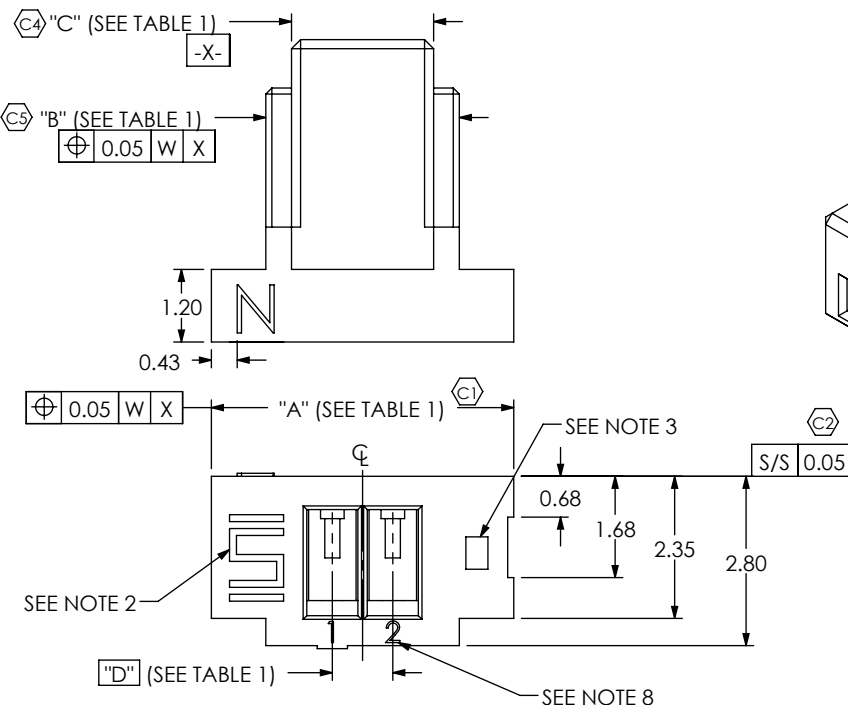
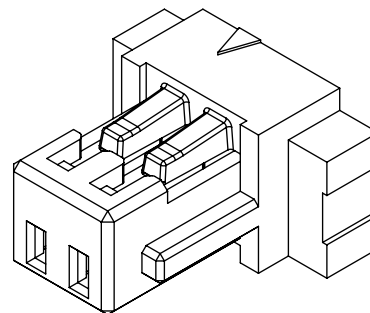


DO NOT
SCALE FROM
THIS PRINT



DESIGNED & DIMENSIONED
IN MILLIMETERS



NOTES:

1. C REPRESENTS A CRITICAL DIMENSION.
2. SAMTEC LOGO SHALL APPEAR AT TWO EQUALLY SPACED LOCATIONS ON SURFACE SHOWN, APPROXIMATELY 1.43 X 0.90.
3. ALL MULTIPLE CAVITY MOLDS SHALL IDENTIFY EACH CAVITY WITH A NUMBER DESIGNATION LOCATED WHERE SHOWN.
4. ALL IDENTIFICATION MARKS MUST NOT STAND GREATER THAN 0.05 OFF THE SURFACE OF THE PART.
5. MOLDED SURFACES SHALL BE CONSISTENT AND SMOOTH. SURFACES TO BE FREE OF SCRATCHES, NICKS, SINK AREAS, VOIDS OR OTHER BLEMISHES.
6. T/B BOW TO BE MEASURED ON BOTH SIDES OF PART IN THE AREA DEFINED.
7. GATE PAD TO BE RECESSED 0.10.
8. SPECIFIED POSITIONS TO BE IDENTIFIED WHERE SHOWN AND TO BE RECESSED 0.050.

ROW SPECIFICATION
-S: SINGLE ROW

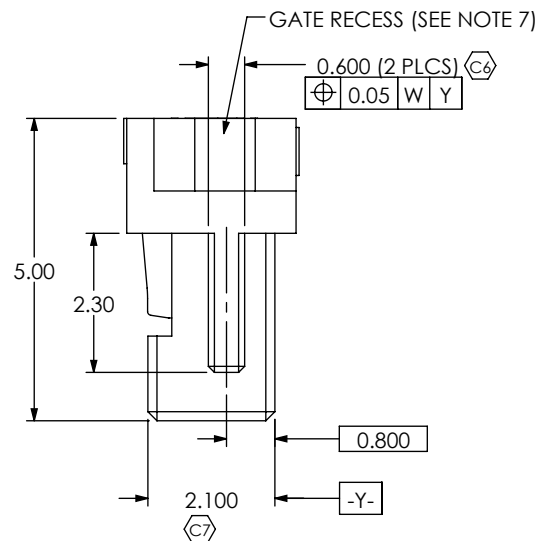
ISS1-XX-X

OPTION
* -L: LATCH

NO OF POSITIONS
(PER ROW)

-02, -03, -04, -05, -06, -07, -08, -09,
-10, -11, -12, -13, -14,
-15, -16, -17, -18, -19 & -20

* = NOT TOOLED



UNLESS OTHERWISE SPECIFIED,
DIMENSIONS ARE IN MILLIMETERS.
TOLERANCES ARE:
DECIMALS ANGLES
X.X: ± 0.3 2°
X.XX: ± 0.05
X.XXX: ± 0.025

PROPRIETARY NOTE

THIS DOCUMENT CONTAINS INFORMATION
CONFIDENTIAL AND PROPRIETARY TO
SAMTEC, INC. AND SHALL NOT BE REPRODUCED
OR TRANSFERRED TO OTHER DOCUMENTS OR
DISCLOSED TO OTHERS OR USED FOR ANY
PURPOSE OTHER THAN THAT WHICH IT WAS
OBTAINED WITHOUT THE EXPRESSED WRITTEN
CONSENT OF SAMTEC, INC.

samtec

520 PARK EAST BLVD, NEW ALBANY, IN 47150
PHONE: 812-944-6733 FAX: 812-948-5047
e-Mail: info@SAMTEC.com code: 55322

MATERIAL: DO NOT SCALE DRAWING SHEET SCALE: 8:1
DUPONT HTN FR52G30NH BK337, COLOR: BLACK
MAX REGRIND: 50%

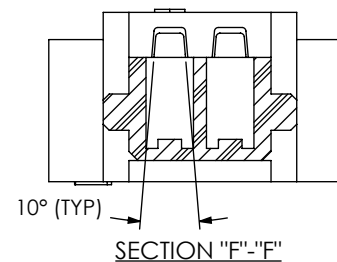
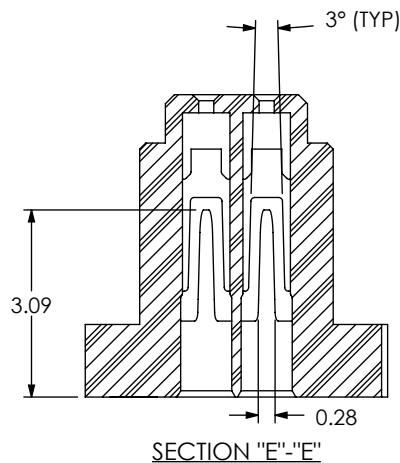
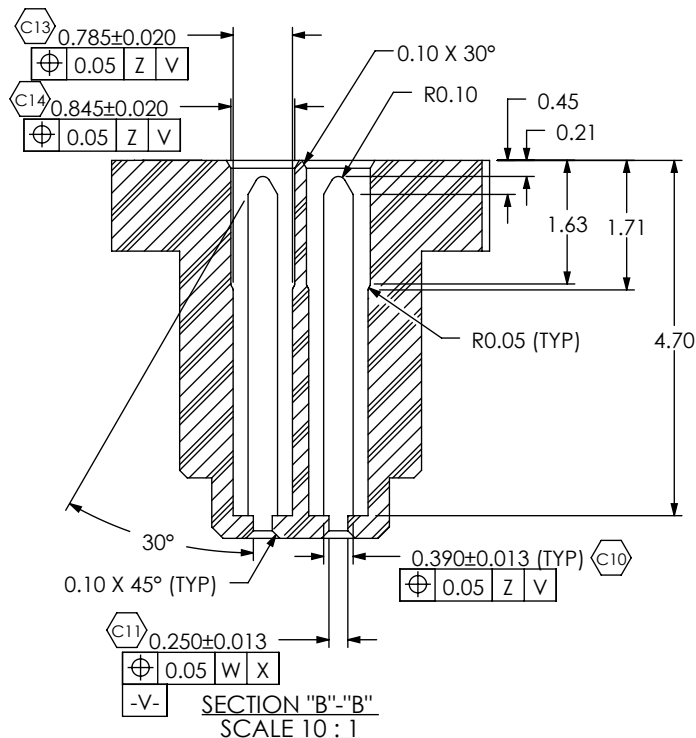
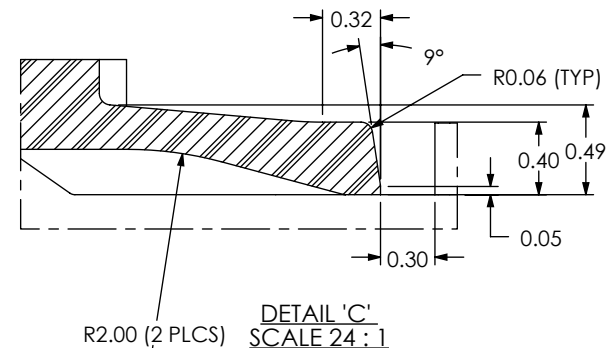
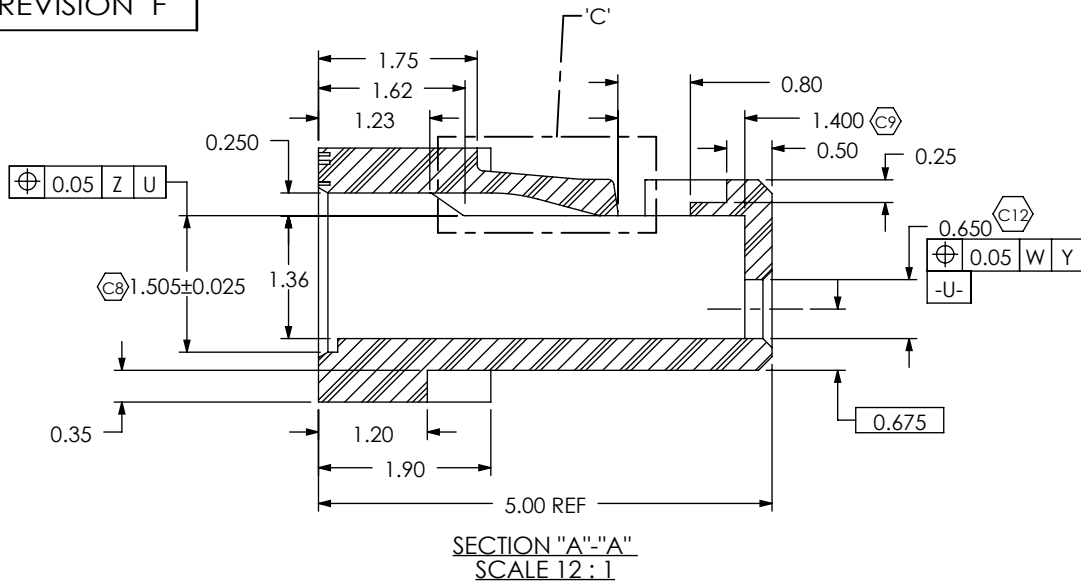
MAX FLASH ALLOWED: 0.05
MAX GATE VESTIGE: 0.05

c:\enterprise\dwg\MISC\MKTG\ISS1-XX-X-MKT.SLDDRW

DESCRIPTION:
1.00 MM PITCH S1SX BODY

DWG. NO.
ISS1-XX-X

BY: VICKY Z 04/15/2010 SHEET 1 OF 3



PROPRIETARY NOTE

THIS DOCUMENT CONTAINS INFORMATION
CONFIDENTIAL AND PROPRIETARY TO
SAMTEC, INC., AND SHALL NOT BE REPRODUCED
OR TRANSFERRED TO OTHER DOCUMENTS OR
DISCLOSED TO OTHERS OR USED FOR ANY
PURPOSE OTHER THAN THAT WHICH IT WAS
OBTAINED WITHOUT THE EXPRESSED WRITTEN
CONSENT OF SAMTEC, INC.

DO NOT SCALE DRAWING

SHEET SCALE: 8:1

samtec

520 PARK EAST BLVD, NEW ALBANY, IN 47150
PHONE: 812-944-6733 FAX: 812-948-5047
e-Mail: info@SAMTEC.com code: 55322

DESCRIPTION:
1.00 MM PITCH S1SX BODY

DWG. NO.
ISS1-XX-X

BY: VICKY Z 04/15/2010 SHEET 2 OF 3

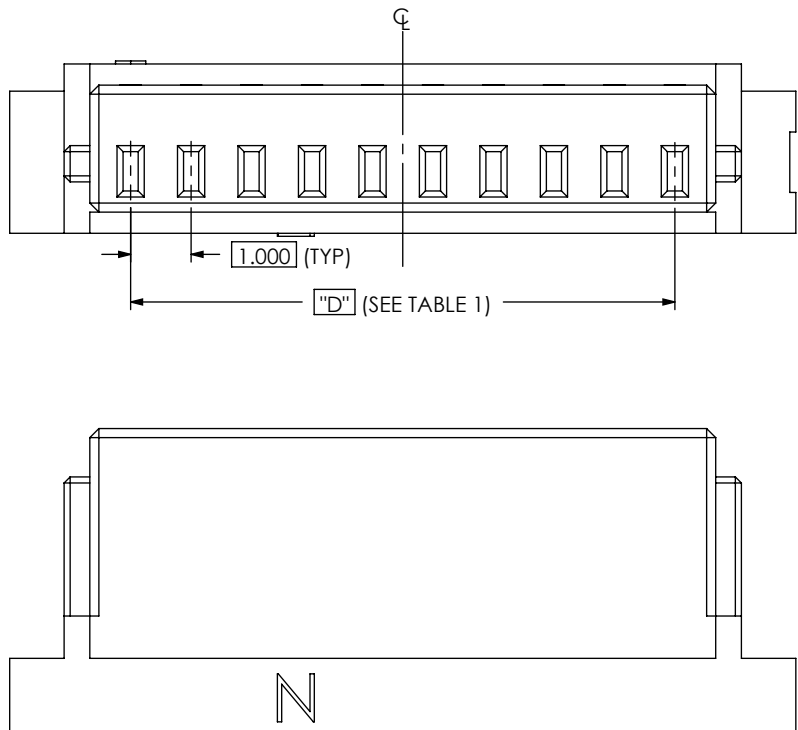


FIG 2
ISS1-10 SHOWN
(SAME AS FIG 1, EXCEPT AS SHOWN)

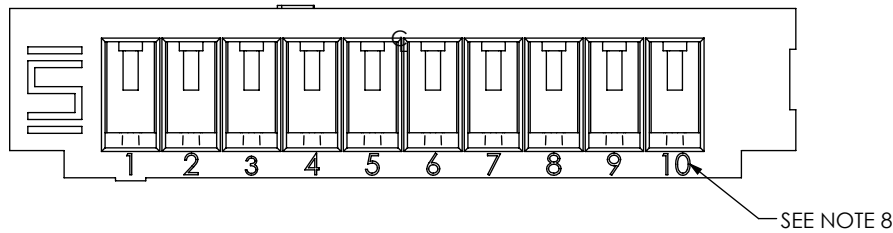


TABLE 1				
No. OF POS	"A"	"B"	"C"	"D"
-02	5.00	3.200	2.350	1.000
-03	6.00	4.200	3.350	2.000
-04	7.00	5.200	4.350	3.000
-05	8.00	6.200	5.350	4.000
-06	9.00	7.200	6.350	5.000
-07	10.00	8.200	7.350	6.000
-08	11.00	9.200	8.350	7.000
-09	12.00	10.200	9.350	8.000
-10	13.00	11.200	10.350	9.000
-11	14.00	12.200	11.350	10.000
-12	15.00	13.200	12.350	11.000
-13	16.00	14.200	13.350	12.000
-14	17.00	15.200	14.350	13.000
-15	18.00	16.200	15.350	14.000
-16	19.00	17.200	16.350	15.000
-17	20.00	18.200	17.350	16.000
-18	21.00	19.200	18.350	17.000
-19	22.00	20.200	19.350	18.000
-20	23.00	21.200	20.350	19.000

PROPRIETARY NOTE
THIS DOCUMENT CONTAINS INFORMATION
CONFIDENTIAL AND PROPRIETARY TO
SAMTEC, INC. AND SHALL NOT BE REPRODUCED
OR TRANSFERRED TO OTHER DOCUMENTS OR
DISCLOSED TO OTHERS OR USED FOR ANY
PURPOSE OTHER THAN THAT WHICH IT WAS
OBTAINED WITHOUT THE EXPRESSED WRITTEN
CONSENT OF SAMTEC, INC.

DO NOT SCALE DRAWING

SHEET SCALE: 8:1



520 PARK EAST BLVD, NEW ALBANY, IN 47150
PHONE: 812-944-6733 FAX: 812-948-5047
e-Mail: info@SAMTEC.com code: 55322

DESCRIPTION:
1.00 MM PITCH S1SX BODY

DWG. NO.
ISS1-XX-X

BY: VICKY Z 04/15/2010 SHEET 3 OF 3