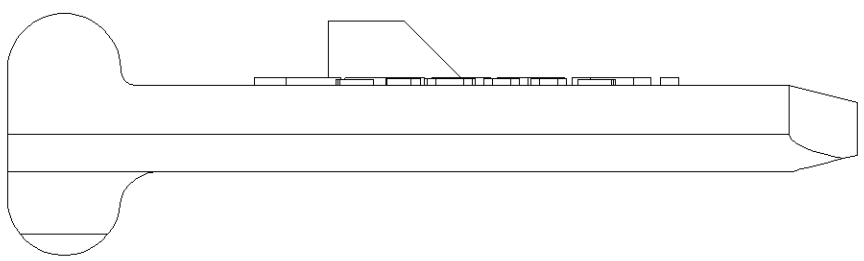
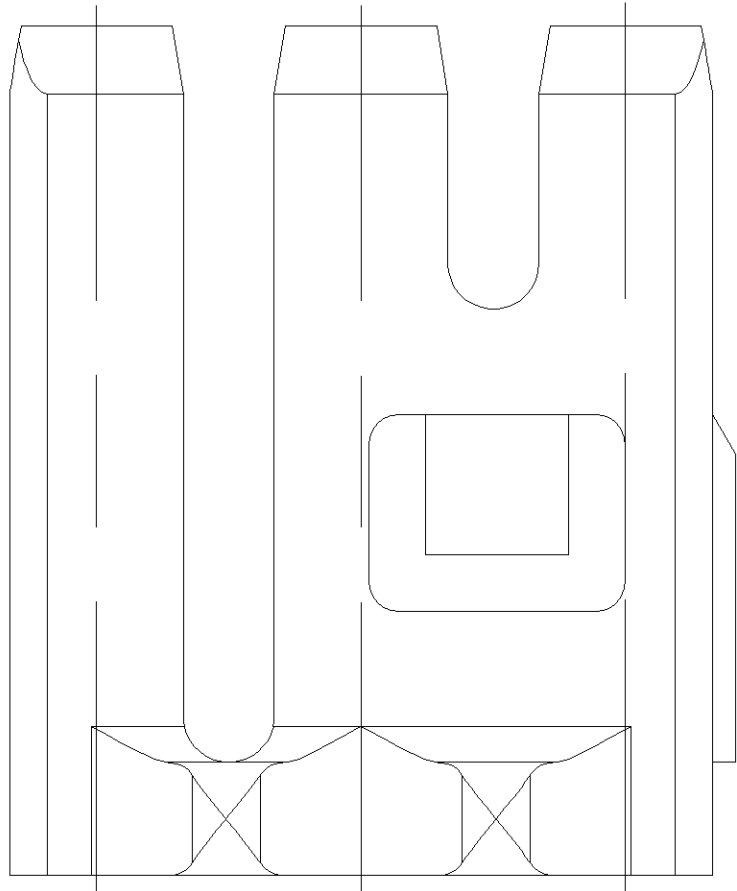
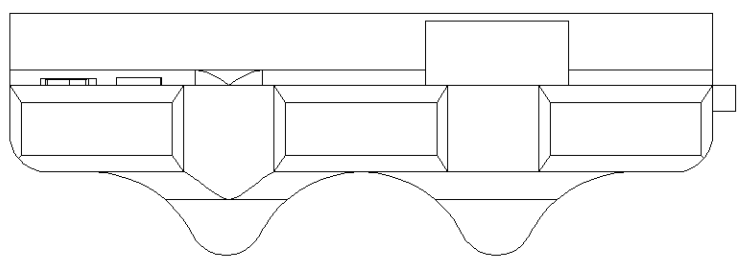
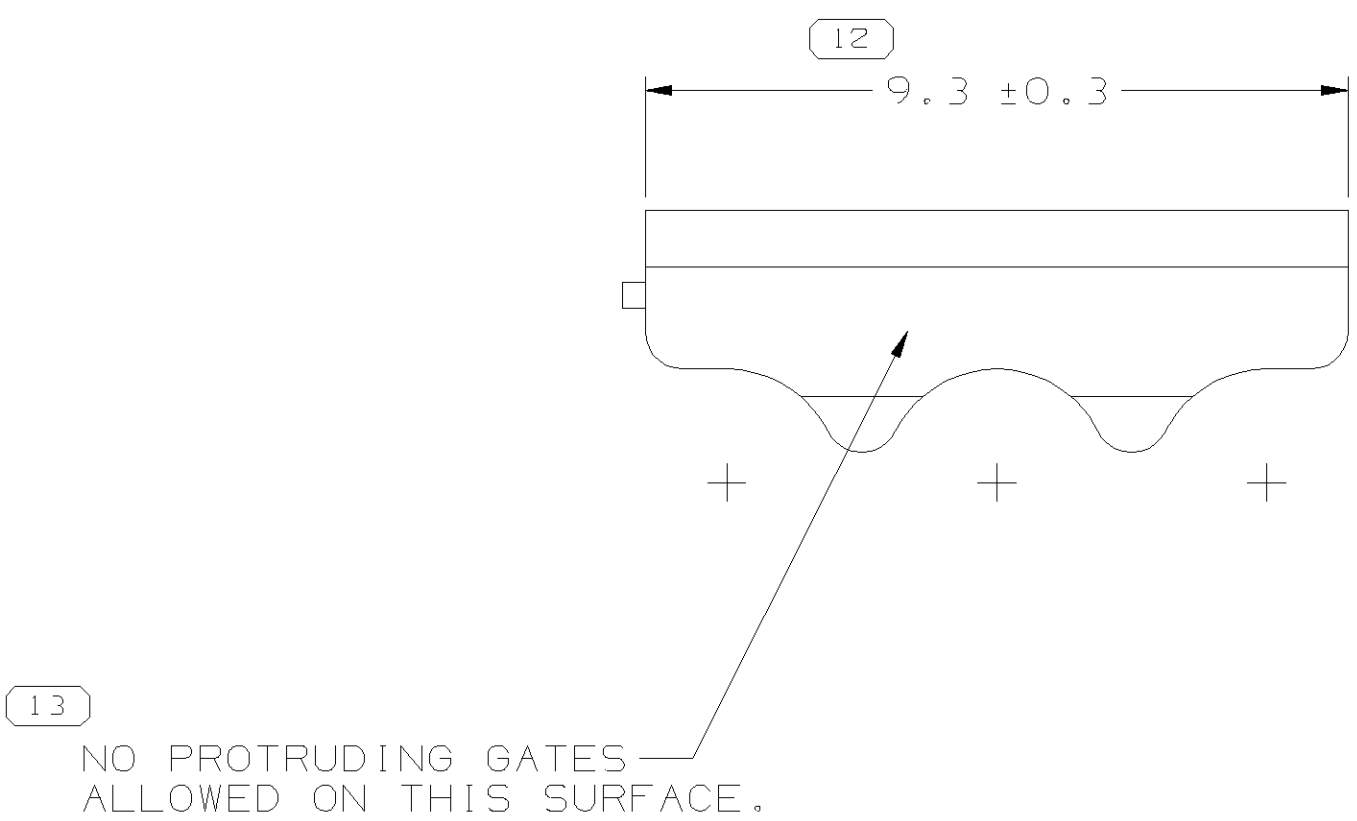
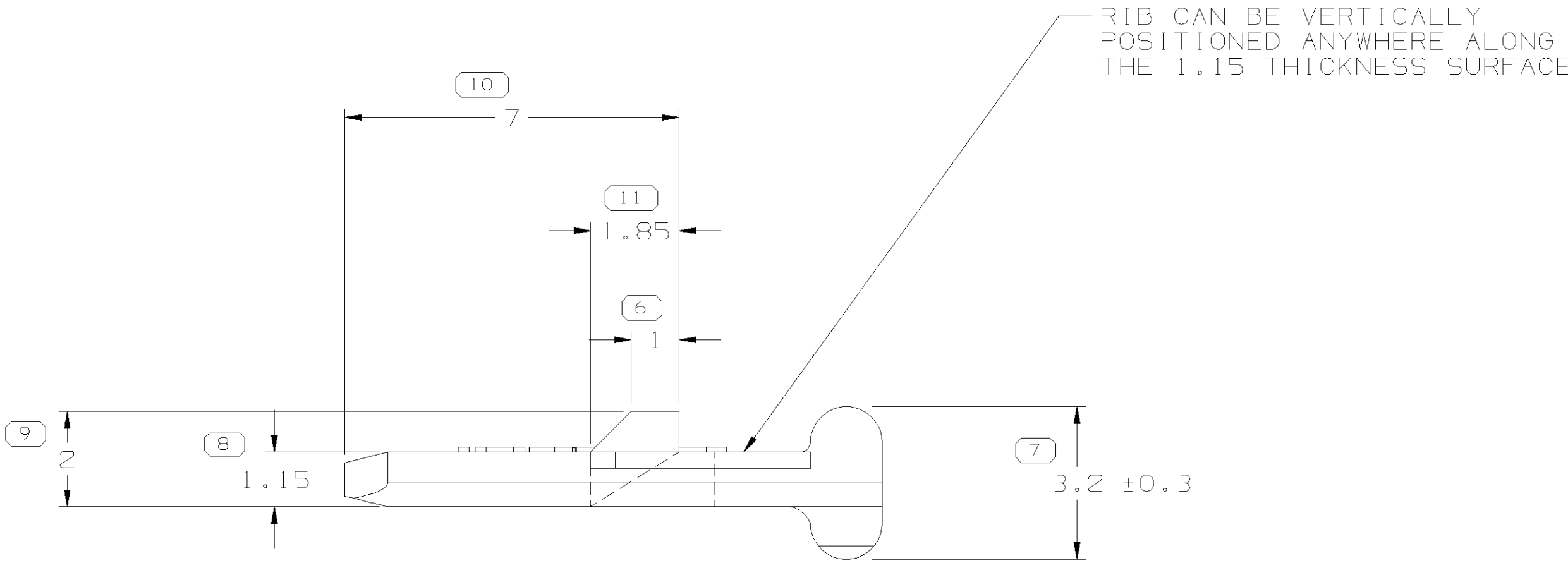
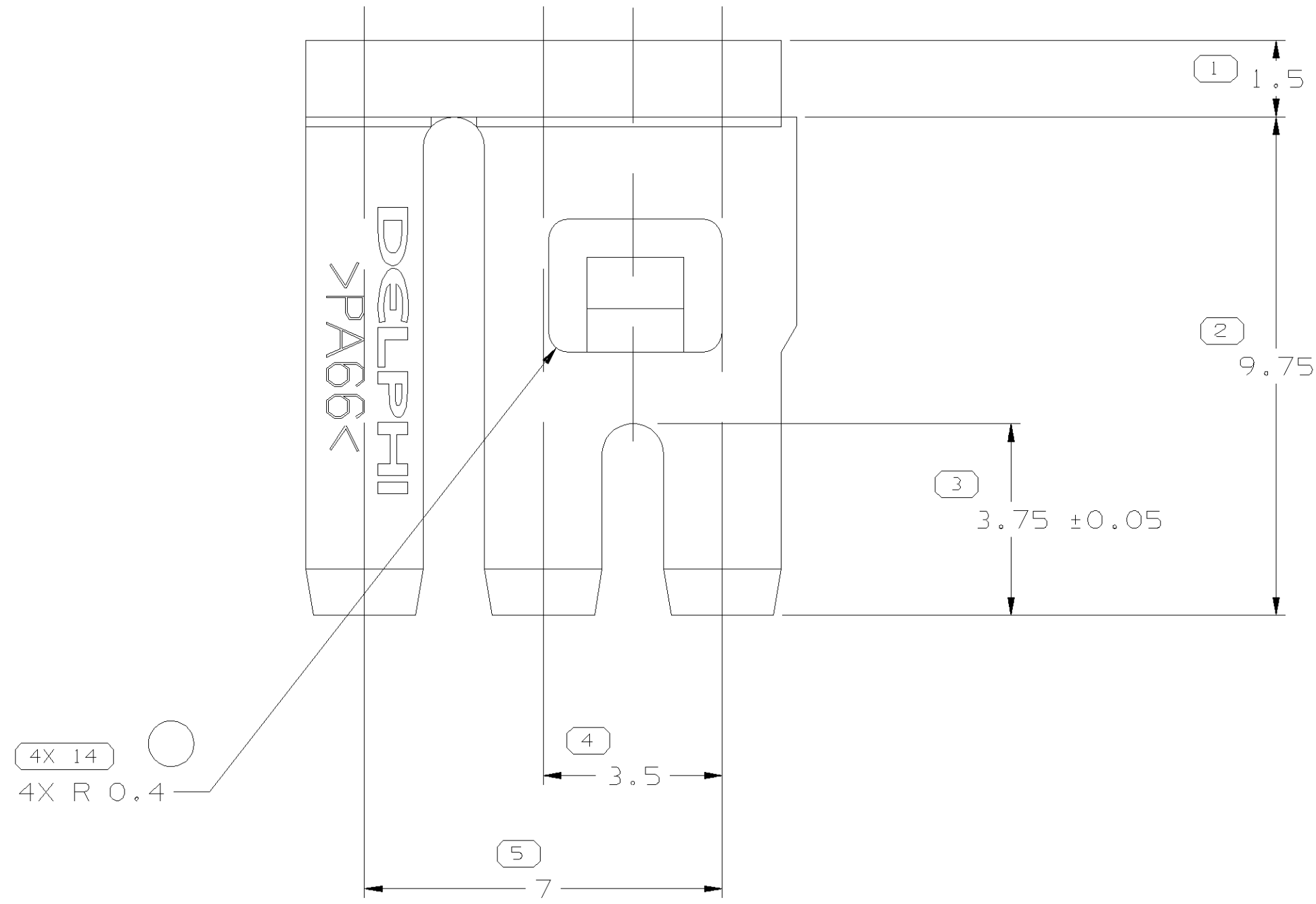


SYMBOL DEFINITION			MISSING SYMBOLS	
A DIMENSION WITHOUT AN INSPECTION REPORT SYMBOL □ DOES NOT REQUIRE INSPECTION. IT MAY BE CONTROLLED ON THE INDIVIDUAL COMPONENT DRAWING.	TOTAL NO OF INSPECTIONS REQUIRED	17	NO MISSING SYMBOL NUMBER	
	LAST NO. USED	14		

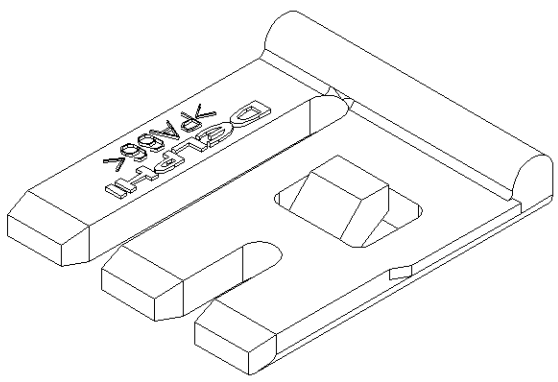
DWO STATUS		ZONE		REVISION HISTORY		AUTH		DR	APVD	APVD
DATE	STG	REV	N/P	CHG					1	2
26JUL02	R	01	-	-	12047783 - WAS A SEPARATE DRAWING, ADDED ANTI-RATTLE RIBS, & REVISED MAT'L SPEC; 15441909 - RELEASED	227639	AFM	EOV	GM	
24SE02	R	02	-	-	REVISED GRAPHICS	230972	AFM	EOV	GM	
080C02	R	03	-	-	ALL PARTS - ADDED RIB NOTE	231694	EOV	EOV	GMC	
210C03	R	04	-	-	ALL PARTS - OPTIONAL CONSTRUCTION WAS PREFERRED CONSTRUCTION AND ADDED NOTE; ADDED DIM	246397	BYP	AFM	BG	



NOTES

- UNLESS OTHERWISE SPECIFIED AND/OR INDICATED: DIMENSIONS ARE TO FACE OF VIEW SHOWN AND AUTOMATICALLY ROUNDED BY COMPUTER FOR INSPECTION (SEE MATH MODEL FOR PRECISE DIMENSIONS). FOR ALL OTHER DIMENSIONS NOT SHOWN BUT REQUIRED FOR TOOL BUILD, SEE MATH MODEL FOR PRECISE TOOL PATH DATA.
- MATERIAL RECYCLING CODE PER ISO 11469. (2,3)X(0,1) RAISED CHARACTERS AS SHOWN TO BE LOCATED ON ANY EXTERIOR SURFACE. OPTIONAL CONSTRUCTION TO BE NO MATERIAL RECYCLING CODE.
- MATING COMPONENTS OR EQUIVALENT: CONNECTORS 12047781 & 12048102
- (2,3)X(0,1) RAISED DELPHI CORPORATE BRAND TO BE LOCATED ON ANY EXTERIOR SURFACE, PREFERABLY VISIBLE AT FINAL ASSEMBLY. OPTIONAL CONSTRUCTION TO BE "PED" OR NO LOGO.
- THIS PART DOES NOT FALL IN TO THE CATEGORY OF AN APPEARANCE ITEM. MINOR SURFACE IMPERFECTIONS SUCH AS FLOW LINES, EJECTOR PIN MARKS, KNIT LINES, WELD MARKS AND GATE MARKINGS ARE PERMITTED EXCEPT IN AREAS INDICATED ON THIS PRINT.

VIEW SCALE DO NOT REFLECT ACTUAL PART SIZE



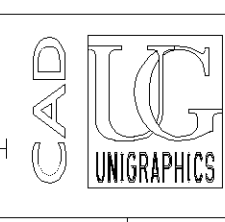
DWO TYPE		PART DRAWING	
STYLE			
VOLUME (CM³)	SEE CHART	DISTR CODE	
ROUTING	6900		D
UNLESS OTHERWISE SPECIFIED			
THIS DOCUMENT IS IN ACCORDANCE WITH ASME Y14.5M-1994 AS AMENDED BY THE 2018 GLOBAL DIMENSIONING AND TOLERANCING ADDENDUM-2018. SEPARATE PATTERNING OF FEATURES MAY BE SHOWN SEPARATELY REGARDLESS OF DATUM REFERENCES.			
ALL DIMENSIONS ARE IN MILLIMETERS			
REFERENCE			

(12) PROCESS SENSITIVE DIMENSION

DIMENSIONS ENCLOSED IN () INDICATE RETIRED DIMENSIONS AND NO TOLERANCE LIMITS ARE ESTABLISHED

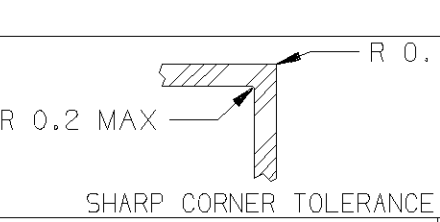
DIMENSIONAL RANGE (MM)		CHART	
FROM	TO	1	2
> 0	> 20	> 30	> 70
> 20	> 30	> 70	> 100
> 30	> 70	> 100	> 150
> 70	> 100	> 150	> 200
> 100	> 150	> 200	> 250
> 150	> 200	> 250	> 300
> 200	> 250	> 300	> 400
TOLERANCE UNLESS OTHERWISE SPECIFIED		ANGULAR TOLERANCE ±2°	
±0.15		±0.3	
±0.2		±0.4	
±0.3		±0.5	
±0.4		±0.6	
±0.5		±0.8	
±0.6		±1	
±0.8		±1.2	

THIRD ANGLE PROJECTION	
DO NOT SCALE	USE MATH DATA



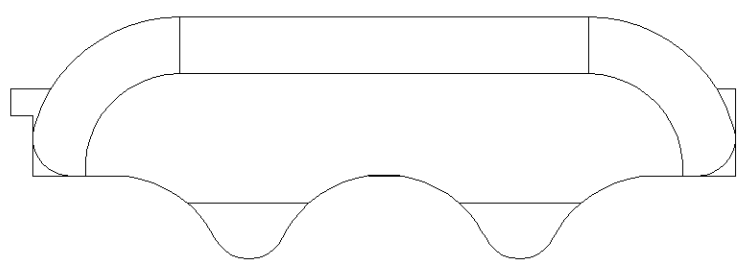
DELPHI	
DELPHI PACKARD ELECTRIC SYSTEMS WARREN, OH	
DR A. FLORES	DATE 26JUL02
APVD1 E. VAZQUEZ	26JUL02
APVD2 G. MACIAS	26JUL02
APVD3	
APVD4	
APVD5	
SUBSTANCES OF CONCERN AND RECYCLED CONTENT PER DELPHI 10949001	
MATERIAL SEE CHART	
DRAWING NAME TAXI LOCK TPA M/P 150	
DRAWING NUMBER 15441910	
SIZE AO	SCALE 10:1
FRAME NO 1	SHEET NO 1 OF 1
STG REV 04	N/P

15441909	01	AC	M3592008 PA66 HS 1M BLU	0.110
12047783	02	AC	M3592025 PA66 HS 1M GRA MD	0.110
PART NO	REV	N/P	STATUS	VOLUME CM³
MATERIAL SPECIFICATION AND COLOR				



SHARP CORNER TOLERANCE

OPTIONAL CONSTRUCTION



Mouser Electronics

Authorized Distributor

Click to View Pricing, Inventory, Delivery & Lifecycle Information:

[Delphi Connection Systems:](#)

[12047783-B](#)