

Surface Mount Two-Way Power Divider, 10 - 500 MHz

Rev. V3

Features

- Fully Hermetic Package
- Phase Balance: 0.5° Typical
- Isolation: 40 dB Typical Midband
- VSWR: 1.05:1 Typical Midband
- Impedance: 50 Ohms Nominal
- Maximum Power Rating or Input Power: 1 Watt Max.
- Internal Load Dissipation: 0.05 Watts Max.
- MIL-STD-202 Screening Available

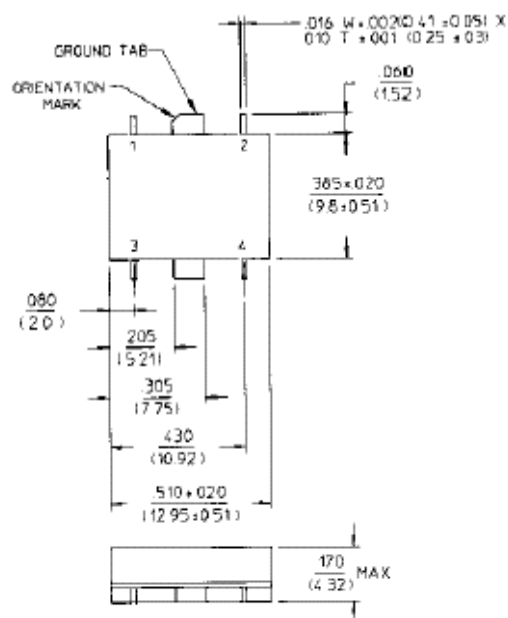
SF-1

Description

A Power Divider is ideally a lossless reciprocal device which can also perform vector summation of two or more signals and thus is sometimes called a power combiner or summer.

Pin Configuration

Pin No.	Function	Pin No.	Function
1	Σ IN	3	GND
2	Output C	4	Output D



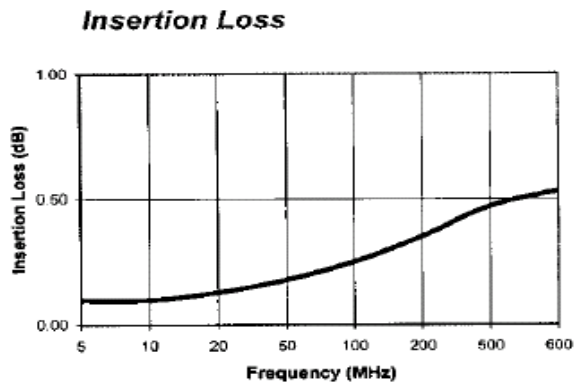
Electrical Specifications¹: $T_A = -55^\circ\text{C}$ to $+85^\circ\text{C}$

Parameter	Test Conditions	Frequency	Units	Min	Typ	Max
Insertion Loss	Less Coupling	10 - 500 MHz	dB	—	—	0.6
Isolation	—	10 - 500 MHz	dB	25	—	—
Amplitude Balance	—	10 - 500 MHz	dB	—	—	0.15
Phase Balance	—	10 - 500 MHz	$^\circ$	—	—	2
VSWR	All Ports	10 - 500 MHz	Ratio	—	—	1.4:1

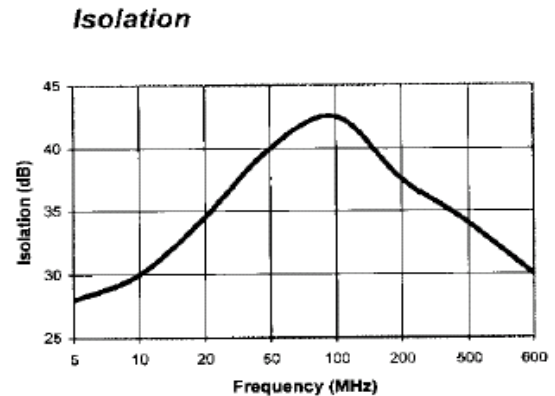
1. All specifications apply with 50 ohm source and load impedance.
This product contains elements protected by United States Patent Number 3,428,920.

Typical Performance Curves

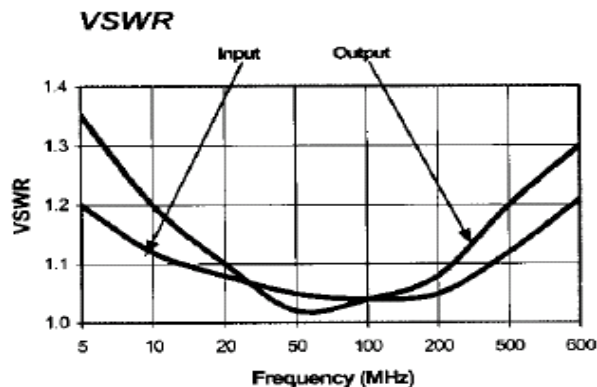
Insertion Loss



Isolation



VSWR



Ordering Information

Part Number	Package
DSS-333 PIN	SF-1

Mouser Electronics

Authorized Distributor

Click to View Pricing, Inventory, Delivery & Lifecycle Information:

[MACOM:](#)

[DSS-333-PIN](#)