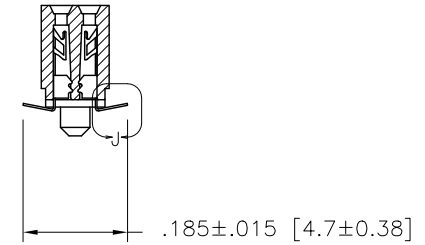
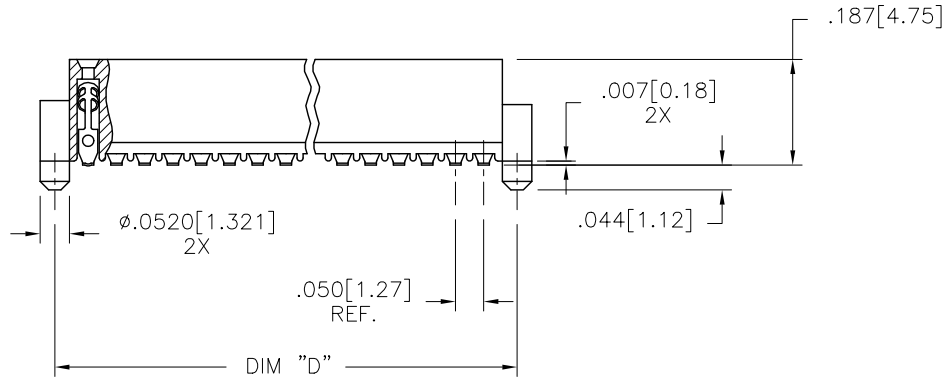
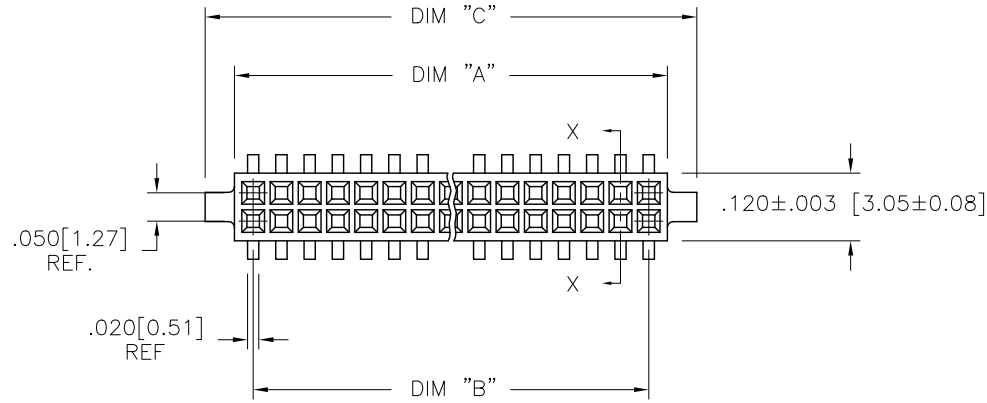




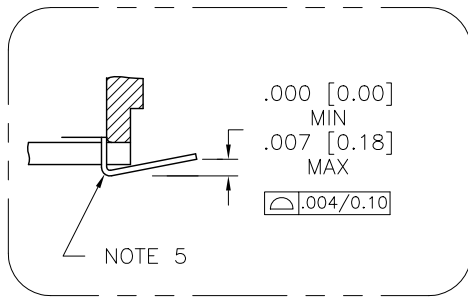
FCIconnect.com

Copyright FCI



PRODUCT NUMBER
SEE TABLE



SECTION X-X



DETAIL J
SCALE 10/1

mat'l. code —				surface ISO 1302 ✓		tolerance ISO 406 ISO 1101		projection 	product family RIB CAGE	
ltr	ecn no	dr	date	tolerances unless otherwise specified					INCH/MM scale 3:1	title .050cc VERT. CARD CONN. SURF. MT. W/LOC. FEATURES
AC	M05-0084	MHT	5/05/05	angles linear 0°±2°	xx ±.01/.3					
AD	M06-0284	AEA	7/27/06		xxx ±.005/.13					
AE	M07-0267	MHT	6/08/07		xxxx ±.0020/.050					
AF	M07-0345	AGS	7/26/07	dr	M. CLOUSER	5/25/91		dwg no	sheet 1 of 4	size
AG	M09-0345	CMR	4/06/09	engr	B. BARUFFALO	5/25/91		87023	A3	
AH	N10-0174	YO	6/17/10	chr	B. BARUFFALO	5/25/91		type Product Customer Drawing		
AJ	ELX-N-010201	YO	2/8/12	appd	B. BARUFFALO	5/25/91				
sheet index		revision sheet		AJ	AJ	AJ				
				1	2	3	4			

PDS: Rev :AJ

STATUS: Released

Printed: Sep 11, 2013

PRODUCT NO.
87023 - XXX

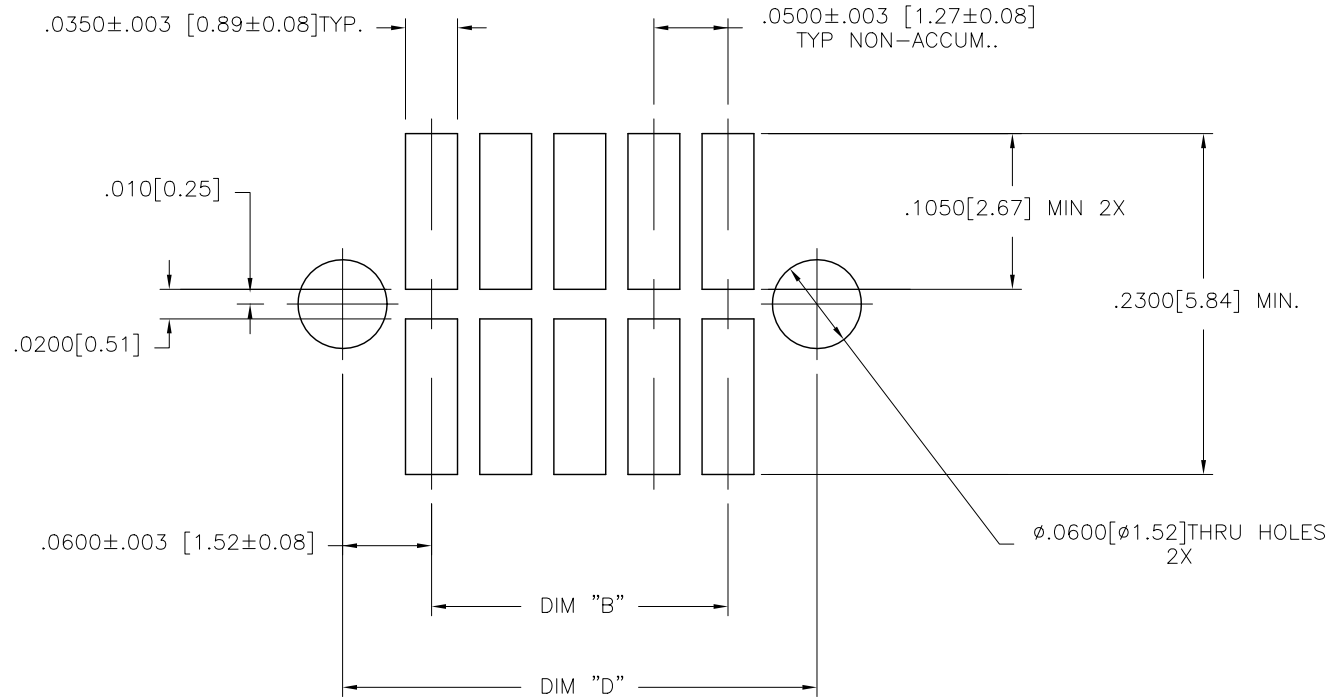
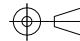


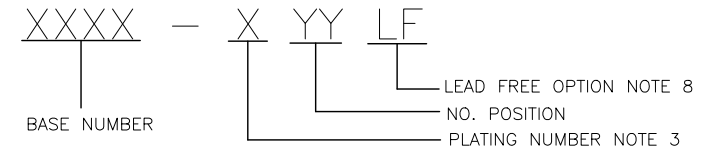


FIGURE A
RECOMMENDED
P.C.B. LAYOUT

mat'l. code —				surface ISO 1302 ✓		tolerance ISO 406 ISO 1101		projection 		product family RIB CAGE					
ltr	ecn	no	dr	date	tolerances unless otherwise specified					title					
AJ					angles	linear	XX ±.01/.3		INCH/MM 		.050cc VERT. CARD CONN. SURF. MT. W/LOC. FEATURES				
					XXX ±.005/.13										
					0°±2°		XXXX ±.0020/.050		scale 3:1						
					dr	M. CLOUSER	5/25/91				dwg no		sheet 2 of 4	size	
					engr	B. BARUFFALO	5/25/91				87023		A3		
					chr	B. BARUFFALO	5/25/91								
					appd	B. BARUFFALO	5/25/91				type		Product	Customer	Drawing
sheet index		revision sheet													

PRODUCT NO. NOTE 8	SIZE	DIM A	DIM B	DIM C	DIM D	SPECIAL PACKAGING	TAPE WIDTH PITCH	PIECES PER REEL
87023-605	2 X 5	.266/6.756	.200/5.08	.370/9.398	.3200/8.128	NOTE 6	24mm 12mm	750
-610	2 X 10	.516/13.106	.450/11.43	.620/15.748	.5700/14.478	NOTE 6	24mm 12mm	750
-615	2 X 15	.766/19.456	.700/17.78	.870/22.098	.8200/20.828	NOTE 6	44mm 12mm	500
-620	2 X 20	1.016/25.806	.950/24.13	1.120/28.448	1.0700/27.178	NOTE 6 & 7	44mm 12mm	500
-625	2 X 25	1.266/32.156	1.200/30.48	1.370/34.798	1.3200/33.528	NOTE 6	56mm 12mm	500
-630	2 X 30	1.516/38.506	1.450/36.83	1.620/41.148	1.5700/39.878	NOTE 6 & 7	56mm 12mm	500
-635	2 X 35	1.766/44.856	1.700/43.18	1.870/47.498	1.8200/46.228	NOTE 6	72mm 12mm	500
-640	2 X 40	2.016/51.206	1.950/49.53	2.120/53.848	2.0700/52.578	NOTE 6 & 7	72mm 12mm	500
-645	2 X 45	2.266/57.556	2.200/55.88	2.370/60.198	2.3200/58.928	NOTE 6	72mm 12mm	500
-650	2 X 50	2.516/63.906	2.450/62.23	2.620/66.548	2.5700/65.278	NOTE 6	88mm 12mm	500
-905	2 X 5	.266/6.756	.200/5.08	.370/9.398	.3200/8.128	NO	—	—
-910	2 X 10	.516/13.106	.450/11.43	.620/15.748	.5700/14.478	NO	—	—
-915	2 X 15	.766/19.456	.700/17.78	.870/22.098	.8200/20.828	NO	—	—
-920	2 X 20	1.016/25.806	.950/24.13	1.120/28.448	1.0700/27.178	NO	—	—
-925	2 X 25	1.266/32.156	1.200/30.48	1.370/34.798	1.3200/33.528	NO	—	—
-930	2 X 30	1.516/38.506	1.450/36.83	1.620/41.148	1.5700/39.878	NO	—	—
-935	2 X 35	1.766/44.856	1.700/43.18	1.870/47.498	1.8200/46.228	NO	—	—
-940	2 X 40	2.016/51.206	1.950/49.53	2.120/53.848	2.0700/52.578	NO	—	—
-945	2 X 45	2.266/57.556	2.200/55.88	2.370/60.198	2.3200/58.928	NO	—	—
87023-950	2 X 50	2.516/63.906	2.450/62.23	2.620/66.548	2.5700/65.278	NO	—	—



NOTES:

- HOUSING MATERIAL:
GLASS FILLED THERMOPLASTIC FLAME RETARDANT PER UL 94V-0
COLOR: NATURAL
- TERMINAL MATERIAL: BeCu
- TERMINAL PLATING:
-6XXLF: 30u"/.76um MIN HARD GOLD OR GXT OVER Ni ON CONTACT ZONES.
100u"/2.54um MIN PURE TIN OVER Ni
IN SOLDERING ZONES, OTHERWISE GOLD FLASH OR UNPLATED.
-9XXLF: 60u"/1.52um MIN HARD GOLD ON CONTACT ZONES,
100u"/2.54um MIN PURE TIN OVER Ni
OVER Ni IN SOLDERING ZONES, OTHERWISE GOLD FLASH OR UNPLATED.
- APPLICATION INFORMATION:
 - RECOMMENDED MOUNTING PAD PATTERN IS SHOWN IN FIGURE "A".
 - MATING PINS TO BE .0176/0.447 TO .0181/0.459 DIA.
 - MATING PIN TIPS TO BE IN TRUE POSITION TO MATING GRID WITHIN .006/0.15 DIA.
 - SUGGESTED MATING PIN LENGTH .130/3.30 ±.010/0.25.

- LEAD TIPS TO BE ABOVE HEEL, UP TO .007/0.18 MAX.
COPLANARITY TO BE MEASURED AT LOWEST POINT (HEEL).
- ADD "TR" TO END OF DASH NUMBER FOR TAPE AND REEL
PACKAGED WITH CAP. TOOLED ONLY FOR NOTED CONNECTORS.
- ADD "CT" TO END OF DASH NUMBER FOR CONNECTOR WITH
CAP FOR VACUUM PICKUP IN TUBE.
- ADD LF SUFFIX AT THE END OF PART NUMBER
FOR LEAD FREE OPTION.
- THE HOUSING WILL WITHSTAND EXPOSURE TO 260°C PEAK TEMPERATURE
FOR 20 SECONDS IN A CONVECTION, INFRA-RED OR VAPOR PHASE REFLOW
OVEN. SEE APPLICATION NOTE/PROCEDURES IF THEY ARE AVAILABLE.
- THIS PRODUCT MEETS EUROPEAN UNION DIRECTIVES AND OTHER
COUNTRY REGULATION AS DESCRIBED IN GS-22-008.
- PRODUCT SPEC PER BUS-12-087.

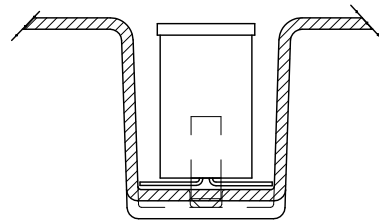
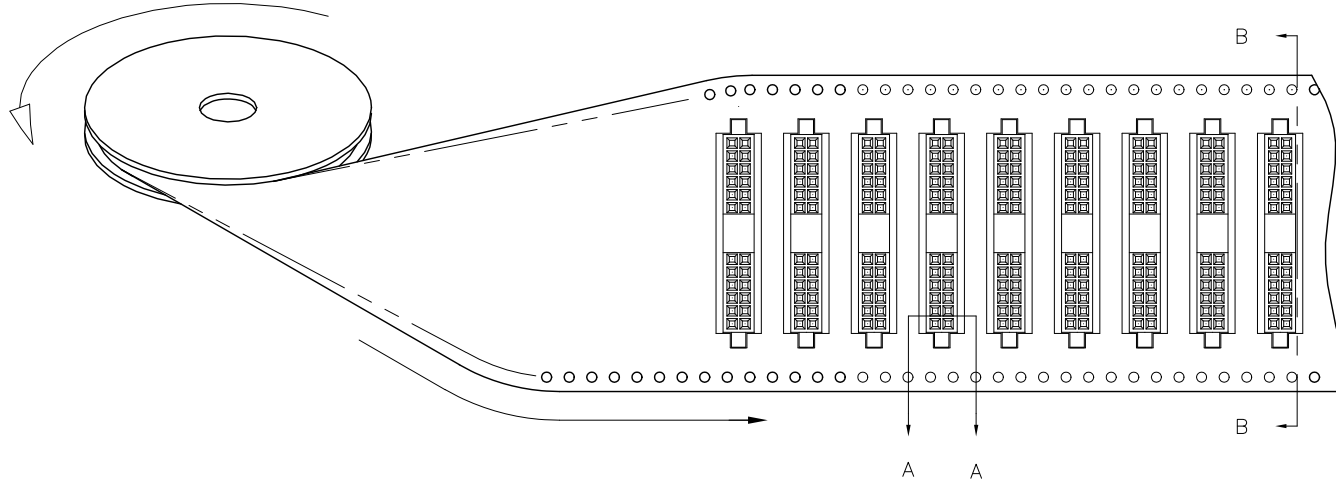
mat'l. code		surface		tolerance		projection		product family	
—		ISO 1302 ✓		ISO 406 ISO 1101		⊕		RIB CAGE	
ltr	ecn	no	dr	date	tolerances unless otherwise specified		title		
AJ					angles	linear	INCH/MM	.050cc VERT. CARD CONN.	
					0°±2'	xxx ±.005/.13	scale 3:1	SURF. MT. W/LOC. FEATURES	
					dr	M. CLOUSER 5/25/91		dwg no	
					enrg	B. BARUFFALO 5/25/91		sheet 3 of 4	
					chr	B. BARUFFALO 5/25/91		size	
					appd	B. BARUFFALO 5/25/91		A3	
sheet		revision						type Product Customer Drawing	
index		sheet							

PRODUCT NUMBER
SEE TABLE

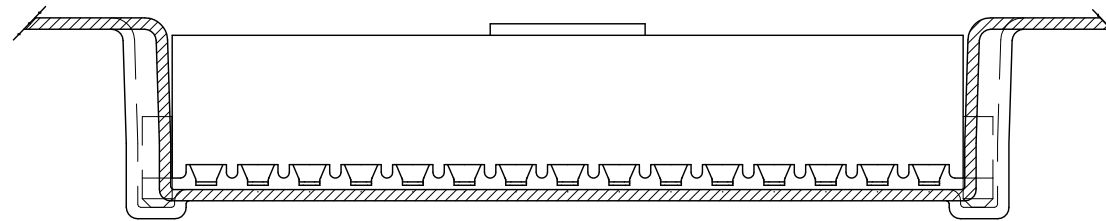
REFERENCE ONLY

TAPE WIDTH'S 32mm AND ABOVE HAS BOTH FEED TRACKS,
BELOW 32mm HAS TOP FEED TRACK ONLY.

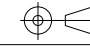


UNREELING
DIRECTION



SECTION A-A



SECTION B-B

mat'l. code —				surface ISO 1302 ✓		tolerance ISO 406 ISO 1101		projection 		product family RIB CAGE				
ltr	ecn	no	dr	date				title						
AJ				angles		linear	XX ±.01/.3			.050cc VERT. CARD CONN.				
							XXX ±.005/.13			SURF. MT. W/LOC. FEATURES				
				0'±2'			XXXX ±.0020/.050		scale 3:1					
				dr	M. CLOUSER	5/25/91				dwg no		sheet 4 of 4 size		
				engr	B. BARUFFALO	5/25/91				87023		A3		
				chr	B. BARUFFALO	5/25/91								
				appd	B. BARUFFALO	5/25/91								
sheet index	revision													
	sheet													

Mouser Electronics

Authorized Distributor

Click to View Pricing, Inventory, Delivery & Lifecycle Information:

FCI:

87023-615LF