

**MICRO SWITCH**FREEPORT ILLINOIS
A DIVISION OF HONEYWELL

FED. MFG. CODE 91929

**ASSEMBLY -
PUSHBUTTON SWITCH**

CATALOG LISTING

702PB794

S

702PB794**M**DRAWING
NUMBER

ISSUE

X 8

REPLACES

RELEASE NO. PR-11397

CHECK

REVISIONS

A	OBS	CO47366
	SMA	19 MAR 80
B	RE-INST	PR-11397
	TSK	17 AUG 82
C	CO	52559
	TMM	7 DEC 82
D	CO53995	

JAP
7 OCT 83

E CO78742

SAD
20 DEC 94

CHECK

CHECK

CHECK

CHECK

CHECK

CHECK

CHECK

CHECK

CHECK

CHECK

CHECK

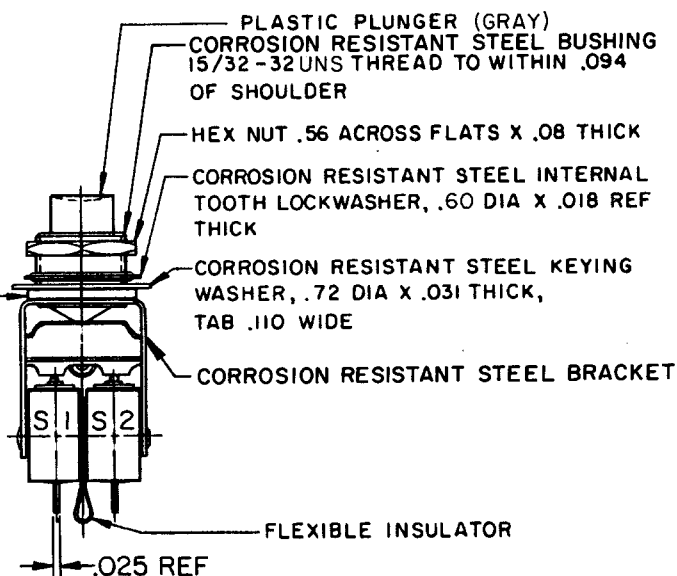
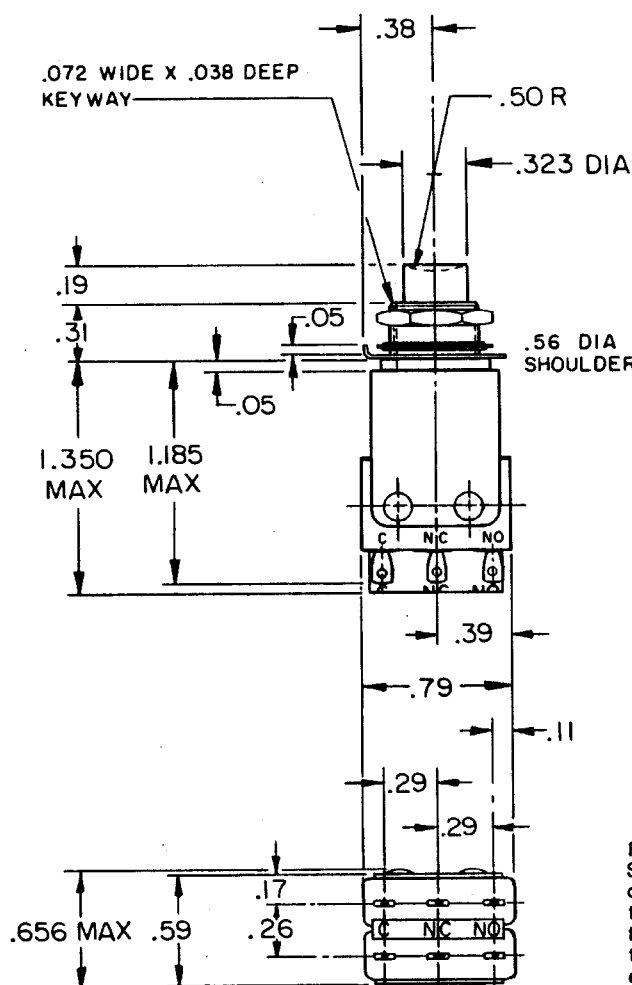
CHECK

CHECK

CHECK

CHECK

CHECK



Furnished under United States Government Contract No. _____ . Shall not be either released outside the Government, or used, duplicated or disclosed in whole or in part for manufacture or procurement, without the written permission of MICRO SWITCH, A Division of Honeywell, except for: (I) emergency repair or overhaul work by or for the Government, where the item or process concerned is not otherwise reasonably available to enable timely performance of the work; or (II) release to a foreign government, as the interests of the United States may require; provided that in either case the release, use, duplication or disclosure hereof shall be marked on any reproduction hereof in whole or in part.

NOTE -

- 1 - UNIT INCLUDES "HM TYPE" BASIC SWITCH (2)
- 2 - TERMINALS ARE PLATED FOR SOLDERING
- 3 - SWITCHES DO NOT NECESSARILY OPERATE SIMULTANEOUSLY
- 4 - SWITCHES HAVE GOLD CONTACTS

CHARACTERISTICS

OPERATING FORCE - - - - 4.5 LB MAX

TOTAL TRAVEL - - - - .08 MIN

ELECTRICAL DATA

CONTACT ARRANGEMENT

S P D T (2)

28 VOLTS DC RATING

INDUCTIVE - - - - - 1/4 AMP
RESISTIVE - - - - - 1 AMP**SCALE FULL**

DO NOT SCALE PRINT

UNLESS OTHERWISE
SPECIFIED
DIMENSIONS ARE IN INCHES
TOLERANCES ARE:ONE PLACE (.0) ±.030
TWO PLACE (.00) ±.015
THREE PLACE (.000) ±.005
ANGLES ±

WEIGHT .063 LB APPROX

FO-90378

DRAWN

CHECK

CHECK

CHECK

CHECK

CHECK

CHECK

CHECK

CHECK

Mouser Electronics

Authorized Distributor

Click to View Pricing, Inventory, Delivery & Lifecycle Information:

[Honeywell:](#)

[702PB794](#)