

CP-168U V2 Series



8 port RS-232 Universal PCI Smart Multiport Serial Board

Features

- Over 700 Kbps data throughput, top performance in the world
- Serial communication speed up to 921.6 Kbps
- 128-byte FIFO and on-chip H/W, S/W flow control
- Universal PCI compatible, with 3.3/5V PCI and PCI-X
- Various connection cable/box for RS-232/422/485
- Windows2003/XP/2000/98/ME, Linux, UNIX driver support
- Easy maintenance with on-board LED display and management software
- Single 5 VDC power requirement
- On-board 15 KV ESD protection



Introduction

CP-168U V2 is a Smart Universal PCI Multiport Serial Board designed for POS and ATM applications, and for use by industrial automation system manufacturers and system integrators. CP-168U V2 is compatible with all popular operating systems, and each of its 8 RS-232 serial ports supports data rates of up to

921.6 Kbps, and provides full modem control signals, ensuring compatibility with a wide range of serial peripherals. In addition, CP-168U V2 works with both 3.3V and 5V PCI buses, allowing the board to be installed in virtually any available PC server.

Top Performance with 128-byte FIFO and On-chip H/W, S/W Flow Control

Our 17 plus years of experience in serial board design is now concentrated in Moxa's new top performance serial data transmission chip, called Turbo Serial Engine™, which equips

the CP-168U V2 series board with a 128-byte FIFO, on-chip hardware and software flow control, and burst data mode. This makes CP-168U V2 the top performing smart multiport serial board in the world.

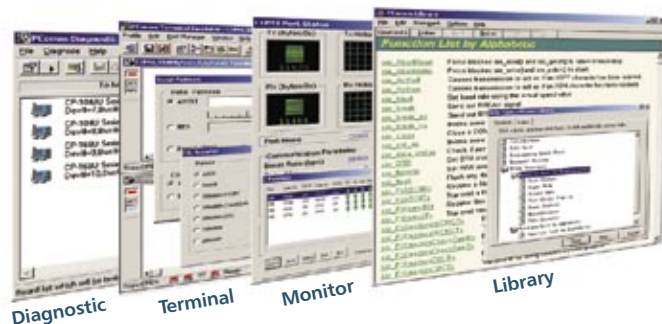
Support for Major Windows and Linux/UNIX OS Drivers

Moxa continues to add support for today's mainstream operating systems, and CP-168U V2, which supports reliable Windows COM and Linux/UNIX TTY drivers, is no exception. In addition,

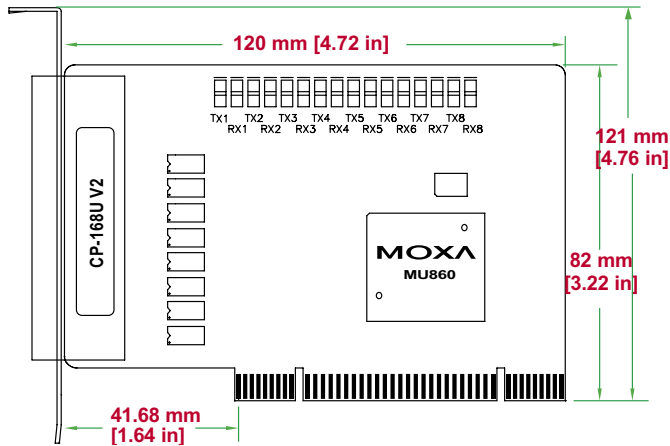
other operating systems, such as embedded Windows XP and QNX, are supported for embedded integration applications.

PComm Lite Utility for Easy Management and Software Development

CP-168U's software package includes Moxa's PComm Lite utility, which can be used to diagnose and monitor the status of installed Moxa serial boards. In addition, PComm Library, which includes libraries of basic serial I/O and file transfer functions, is included free of charge, giving users a complete and easy to use software development tool for Windows applications.

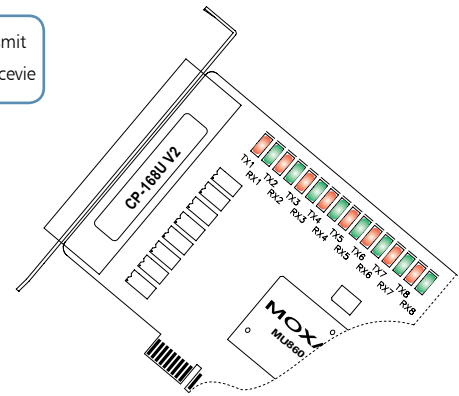


Dimension



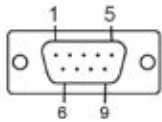
On-Board LED Display

- Red--Transmit
- Green--Receieve



Connection Options

DB9 Male



PIN	DB9M	PIN	DB9M
1	DCD	5	GND
2	RxD	6	DSR
3	TxD	7	RTS
4	DTR	8	CTS

OPT8-M9

DB9 Male x 8, 150 cm Cable

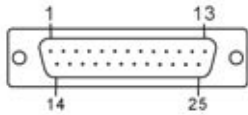


CBL-M62M9 x 8-100(OPT8D)

DB9 Male x 8, 100 cm Cable



DB25 Male



PIN	DB25M	PIN	DB25M
2	TxD	6	DSR
3	RxD	7	GND
4	RTS	8	DCD
5	CTS	20	DTR

OPT8B

DB25 Male x 8

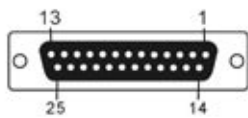


CBL-M62M25 x 8-100(OPT8C)

DB25 Male x 8, 100 cm Cable



DB25 Female



PIN	RS-232	PIN	RS-232
2	RxD	6	DTR
3	TxD	7	GND
4	CTS	8	DCD
5	RTS	20	DSR

PIN	RS-422/4-wire RS-485
2	RxD+(B)
3	TxD+(B)
7	GND
14	RxD-(A)
16	TxD-(A)

PIN	2-wire RS-485
2	Data+(B)
7	GND
14	Data-(A)

OPT8A

DB25 Female x 8, 150 cm Cable



OPT8S

DB25 Female x 8, 150 cm Cable
25 KV ESD Surge Protection



OPT8F/Z(RS-422)

DB25 Female x 8, 150 cm Cable
110V or 230V AC power Adaptor
(max. speed 115.2K bps)

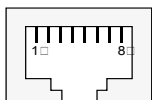


OPT8K(RS-422/485)

DB25 Female x 8, 150 cm Cable
110V or 230V AC power Adaptor
(max. speed 230.4K bps)



8-Pin RJ45



PIN	RJ45	PIN	RJ45
1	DSR	5	RxD
2	RTS	6	DCD
3	GND	7	CTS
4	TxD	8	DTR

OPT8-RJ45

8-pin RJ45 x 8, 30 cm Cable

