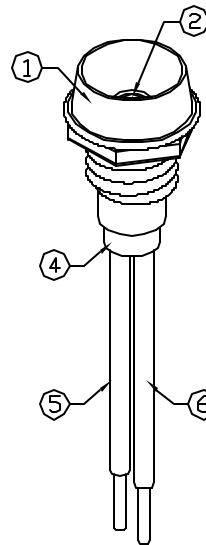
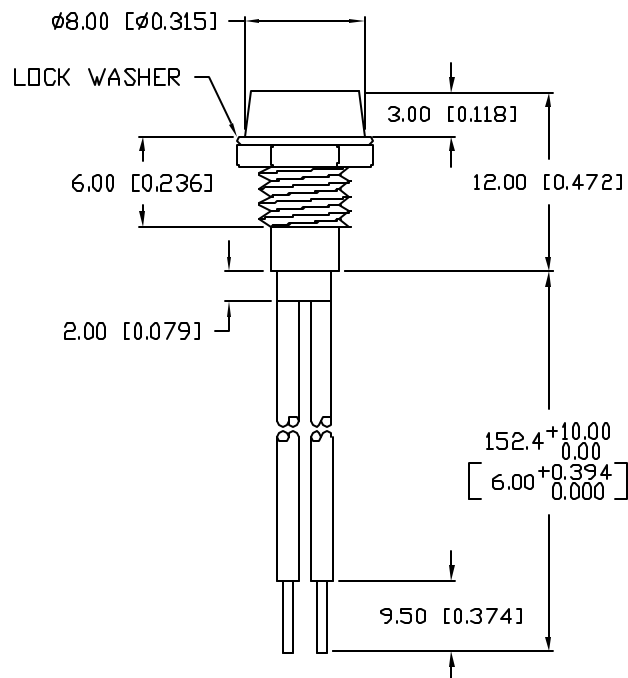


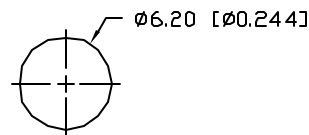
UNCONTROLLED DOCUMENT

PART NUMBER  
SSI-LXR1612GD-150REV.  
D

| REV. | E.C.N. NUMBER AND REVISION COMMENTS    | DATE     |
|------|--|----------|
| A    | CHG'D NOTE SIX TO SPECIFY BLACK INSUL. | 3.2.93   |
| B    | UPDATED SAFE OPER. SPECS AND NOTES.    | 9.19.94  |
| C    | UPDATED DWG. & NOTES.                  | 5.22.95  |
| D    | E.C.N. #10BRDR. & REDRAWN IN 3D.       | 10.16.01 |



PANEL CUTOUT

ELECTRO-OPTICAL CHARACTERISTICS  $T_A=25^\circ\text{C}$   $I_f=20\text{mA}$ 

| PARAMETER          | MIN            | TYP | MAX | UNITS      | TEST COND            |
|--------------------|----------------|-----|-----|------------|----------------------|
| PEAK WAVELENGTH    |                | 565 |     | nm         |                      |
| FORWARD VOLTAGE    |                | 2.2 | 2.6 | $V_f$      |                      |
| REVERSE VOLTAGE    | 5.0            |     |     | $V_r$      | $I_r=100\mu\text{A}$ |
| AXIAL INTENSITY    |                | 30  |     | med        | $I_f=20\text{mA}$    |
| VIEWING ANGLE      |                | 60  |     | $2x$ theta |                      |
| EMITTED COLOR:     | GREEN          |     |     |            |                      |
| EPOXY LENS FINISH: | GREEN DIFFUSED |     |     |            |                      |

LIMITS OF SAFE OPERATION AT  $25^\circ\text{C}$ 

| PARAMETER                      | MAX        | UNITS                |
|--------------------------------|------------|----------------------|
| PEAK FORWARD CURRENT*          | 150        | mA                   |
| STEADY CURRENT                 | 25         | mA                   |
| POWER DISSIPATION              | 105        | mW                   |
| DERATE FROM $25^\circ\text{C}$ | -1.6       | mW/ $^\circ\text{C}$ |
| OPERATING, STORAGE TEMP.       | -40 TO +85 | $^\circ\text{C}$     |
| SOLDERING TEMP.                | +260       | $^\circ\text{C}$     |
| 2.0mm FROM BODY                |            | 3 SEC. MAX           |

\*  $t < 10\mu\text{s}$ 

NOTES:

- SSI-LXR1612, CHROME HOUSING.
- SSL-LX3054GD, GREEN LED. TRIM LEADS TO 5mm.
- SOLDER WIRE LEADS TO LED LEADS.
- SSH-LXH1612BSG, BUSHING. INSERT AND CRIMP.
- ANODE LEAD: LXP-WST26RDT0C, 26 AWG, STRANDED, RED INSULATION. CUT 157mm LONG, STRIP END 2mm & 9.5mm.
- CATHODE LEAD: LXP-WST26BLT0C, 26 AWG, STRANDED, BLACK INSULATION. CUT 157mm LONG, STRIP END 2mm & 9.5mm.

UNCONTROLLED DOCUMENT

\*UNLESS OTHERWISE SPECIFIED TOLERANCES PER DECIMAL PRECISION ARE: X=±1 (±0.039), X.X=±0.5 (±0.020), X.XX=±0.25 (±0.010), X.XXX=±0.127 (±0.005). LEAD SIZE=±0.05 (±0.002), LEAD LENGTH=±0.75 (±0.030). MIN.=<sup>+DECIMAL PRECISION</sup>-0.00 MAX.=<sup>+0.00</sup>-DECIMAL PRECISION

REV.

D

PART NUMBER

SSI-LXR1612GD-150

T-3mm (T-1) 565nm GREEN LED PANEL INDICATOR,  
GREEN DIFFUSED LENS, 6" WIRE LEADS.

## CONFIDENTIAL INFORMATION

THE INFORMATION CONTAINED IN THIS DOCUMENT IS THE PROPERTY OF LUMEX INC. EXCEPT AS SPECIFICALLY AUTHORIZED IN WRITING BY LUMEX INC., THE HOLDER OF THIS DOCUMENT SHALL KEEP ALL INFORMATION CONTAINED HEREIN CONFIDENTIAL AND SHALL PROTECT SAME IN WHOLE OR IN PART FROM DISCLOSURE AND DISSEMINATION TO ALL THIRD PARTIES.

## RELIABILITY NOTE

OUR MANY YEARS OF EXPERIENCE DATA ACCUMULATION INDICATE THAT SOLDER HEAT IS A MAJOR CAUSE OF EARLY AND FUTURE FAILURE. PLEASE PAY ATTENTION TO YOUR SOLDERING PROCESS.



290 E. HELEN ROAD  
PALATINE, IL 60067-6976  
PHONE: +1.847.359.2790  
US WEB: www.lumex.com  
TW WEB: www.lumex.com.tw

DRAWN BY:

BC

CHECKED BY:

APPROVED BY:

DATE: 6.3.92

PAGE: 1 OF 1

SCALE: N/A