

**IPB16**

PAGE 1 OF 1

**M**

DRAWING  
NUMBER

ISSUE  
7

REPLACES

RELEASE NO.

CHECK

REVISIONS

A	NEW DWG 0035539	JUN 79
B	CO- 93593 PPF 22 OCT 98	
C	CO- 94273 G J W 15 APR 99	

22 OCT 98

JUN 79

CO-  
93593

PPF  
22 OCT 98

CO-  
94273

G J W  
15 APR 99

JUN 75

DAW

CHECK

16 JUN 75

DAW

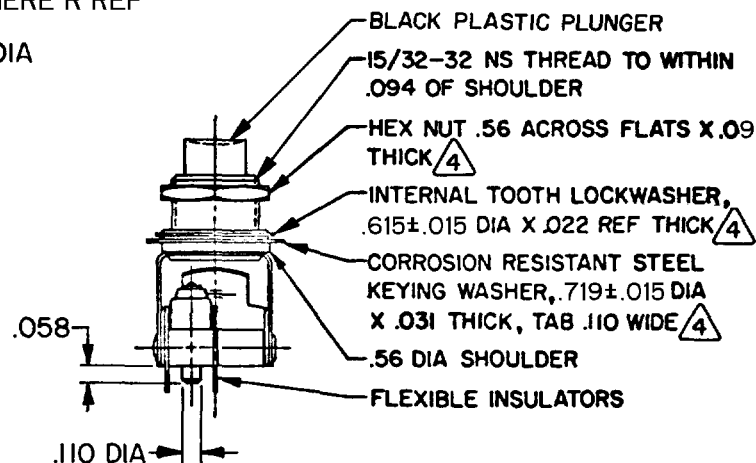
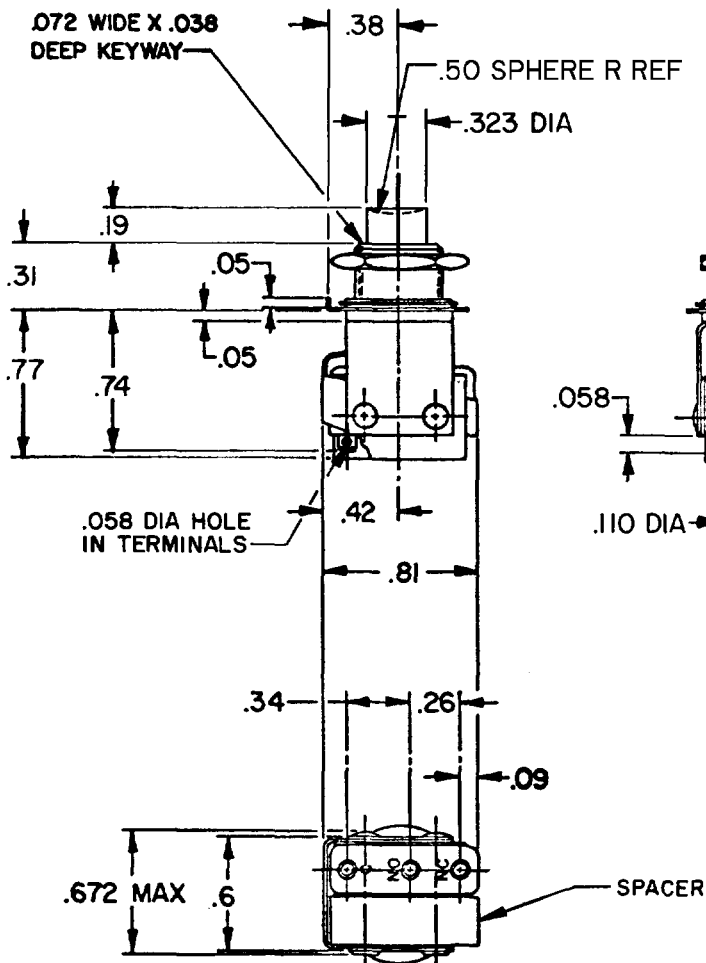
CHECK

FORMTEK

FO-52848-A

DRAWN

K P K II JUN 75

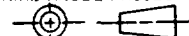


**NOTE—**

- 1 - UNIT INCLUDES CATALOG LISTING "ISM" TYPE BASIC SWITCH
- 2 - TERMINALS ARE PLATED FOR SOLDERING
- 3 - UNIT WILL PERFORM SATISFACTORILY IN TEMPERATURES TO -65°F
- 4 - MOUNTING HARDWARE FURNISHED UNASSEMBLED

THIS DRAWING COVERS A PROPRIETARY ITEM AND IS THE PROPERTY OF MICRO SWITCH, A DIVISION OF HONEYWELL. THIS DRAWING IS NOT TO BE COPIED OR USED WITHOUT THE APPROVAL OF MICRO SWITCH.

THIRD ANGLE PROJECTION



**CHARACTERISTICS**

OPERATING FORCE — I LB APPROX

**ELECTRICAL DATA**

CONTACT ARRANGEMENT  
S P D T

250 VAC ————— 5 AMP

30 VOLTS DC RATING

INDUCTIVE ——— SEA LEVEL — 3 AMP  
50,000 FT — 2.5 AMP  
RESISTIVE ——— SEA LEVEL — 5 AMP  
50,000 FT — 5 AMP  
MAXIMUM INRUSH ————— 24 AMP

SCALE FULL

DO NOT SCALE PRINT

**TOLERANCES**

APPLY TO DESIGN UNITS. CONVERSIONS ARE ONLY FOR REFERENCE. UNLESS NOTED, TOLERANCES ARE ±

	DIM. mm	TOL. mm/in	DIM. in	TOL. mm/in
NO PLACES	X	17.04	X	0.67/0.03
ONE PLACE	X,X	0.4/0.018	X,X	0.38/0.015
TWO PLACES	X,X,X	0.16/0.008	X,X,X	0.13/0.008
THREE PLACES				
ANGLES				

DESIGN UNITS

SI METRIC

US CUSTOMARY

WEIGHT

# Mouser Electronics

Authorized Distributor

Click to View Pricing, Inventory, Delivery & Lifecycle Information:

[Honeywell:](#)

[1PB16](#)