

Model 203 Accelerometer

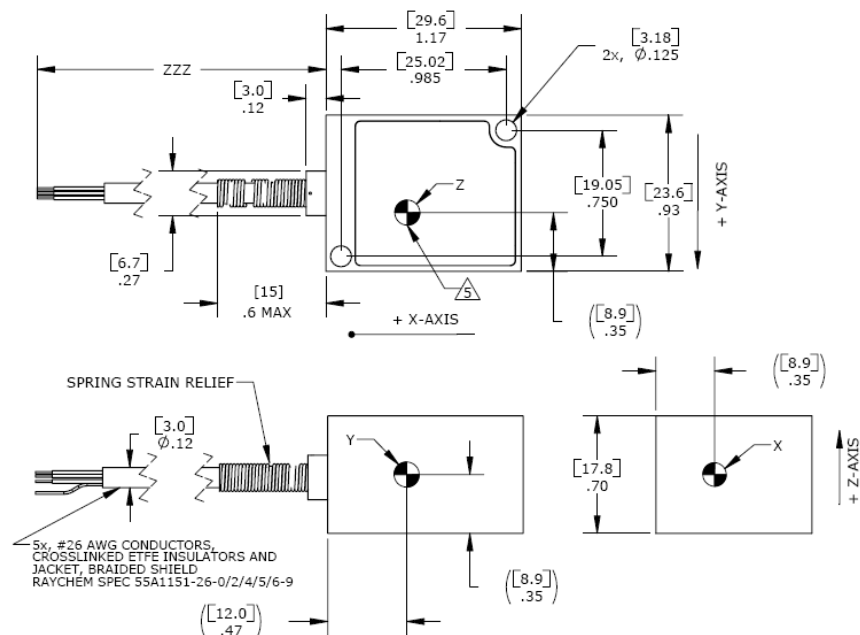


MEMS Triaxial Accelerometer
Temperature Calibrated
Signal Conditioned Output
Low Cost, Low Noise



The Model 203 is a low noise triaxial accelerometer offering both static and dynamic response. The accelerometer is packaged in an anodized aluminum housing with an integral cable. It is offered in ranges from $\pm 2g$ to $\pm 100g$. Featuring gas damped MEMS sensing elements, the model 203 provides a flat frequency response to 100Hz over an operating temperature range of -40°C to $+125^{\circ}\text{C}$.

dimensions

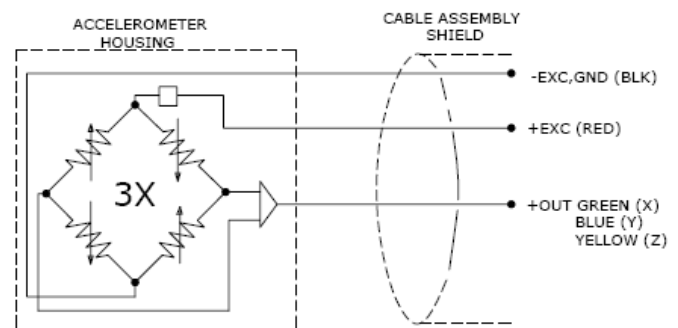


FEATURES

- Low Noise, High Signal-to-Noise
- Three Independent Circuits
- Low Current Consumption
- Ranges: $\pm 2g$ to $\pm 100g$
- DC to 100Hz Frequency Response
- High Over-Range Protection
- Temperature Compensation

APPLICATIONS

- Transportation Measurements
- Vibration & Shock Monitoring
- Road Vehicle Testing
- Low Frequency Applications
- Motion Analysis



Model 203 Accelerometer

performance specifications

All values are typical at +24°C, 100Hz and 12Vdc excitation unless otherwise stated. Measurement Specialties reserves the right to update and change these specifications without notice. Standard product parameters are described in PSC-1004 for Plug & Play DC Accelerometers.

Parameters

DYNAMIC

	±2	±5	±10	±20	±30	±50	±100	Notes
Range (g)								
Sensitivity (mV/g)	1000	400	200	100	67	40	20	
-3dB Cutoff Frequency (Hz)	100 ±15	100 ±15	100 ±15	100 ±15	100 ±15	100 ±15	100 ±15	
Rolloff Above Cutoff Frequency (dB/dec)	-40	-40	-40	-40	-40	-40	-40	
Natural Frequency (Hz)	700	800	1000	1500	1500	4000	6000	
Non-Linearity (%FSO)	±0.5	±0.5	±0.5	±0.5	±0.5	±0.5	±0.5	
Transverse Sensitivity (%)	<3	<3	<3	<3	<3	<3	<3	<2 Typical
Damping Ratio	0.7	0.7	0.7	0.7	0.7	0.7	0.6	
Shock Limit (g)	5000	5000	5000	5000	5000	5000	5000	
Residual Noise (µV RMS)	80	50	50	60	50	60	60	Passband
Residual Noise (µg/√Hz RMS)	8	13	25	60	75	150	300	Spectral

ELECTRICAL

Zero Acceleration Output (V)	2.5 ±0.1	
Excitation Voltage (Vdc)	5 to 30	
Excitation Current (mA)	<5	
Full Scale Output Voltage Swing (Vdc)	0.5 to 4.5	
Output Resistance (Ω)	<100	
Insulation Resistance (MΩ)	>100	@100Vdc
Turn On Time (msec)	<100	
Ground Isolation	Isolated from Mounting Surface	

ENVIRONMENTAL

Thermal Zero Shift (%FSO/°C)	±0.012
Thermal Sensitivity Shift (%/°C)	±0.020
Operating Temperature (°C)	-40 to 125
Compensated Temperature (°C)	0 to 85
Storage Temperature (°C)	-40 to 125
Humidity	Epoxy Encapsulated, IP65

PHYSICAL

Case Material	Anodized Aluminum
Cable	ETFE Insulated Leads, Braided Shield, Crosslinked ETFE Jacket
Weight (grams)	30
Mounting	2x #4 or M3 Screws
Mounting Torque	6 lb-in (0.7 N-m)

Calibration supplied: CS-FREQ-0100 NIST Traceable Amplitude Calibration from 20Hz to 100Hz

Supplied accessories: AC-A03655 2x #4-40 (7/8" length) Socket Head Cap Screw and Washer

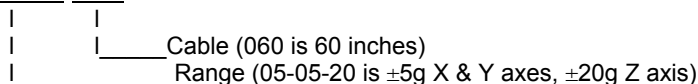
Optional accessories: 101 Three Channel DC Signal Conditioner Amplifier

The information in this sheet has been carefully reviewed and is believed to be accurate; however, no responsibility is assumed for inaccuracies. Furthermore, this information does not convey to the purchaser of such devices any license under the patent rights to the manufacturer. Measurement Specialties, Inc. reserves the right to make changes without further notice to any product herein. Measurement Specialties, Inc. makes no warranty, representation or guarantee regarding the suitability of its product for any particular purpose, nor does Measurement Specialties, Inc. assume any liability arising out of the application or use of any product or circuit and specifically disclaims any and all liability, including without limitation consequential or incidental damages. Typical parameters can and do vary in different applications. All operating parameters must be validated for each customer application by customer's technical experts. Measurement Specialties, Inc. does not convey any license under its patent rights nor the rights of others.

ordering info

PART NUMBERING Model Number+Range+Cable Length

203-XX-YY-ZZ-CCC



Example: 203-05-05-20-060

Model 203, 5g X & Y axes, 20g Z axis, 60" (5ft) Cable