

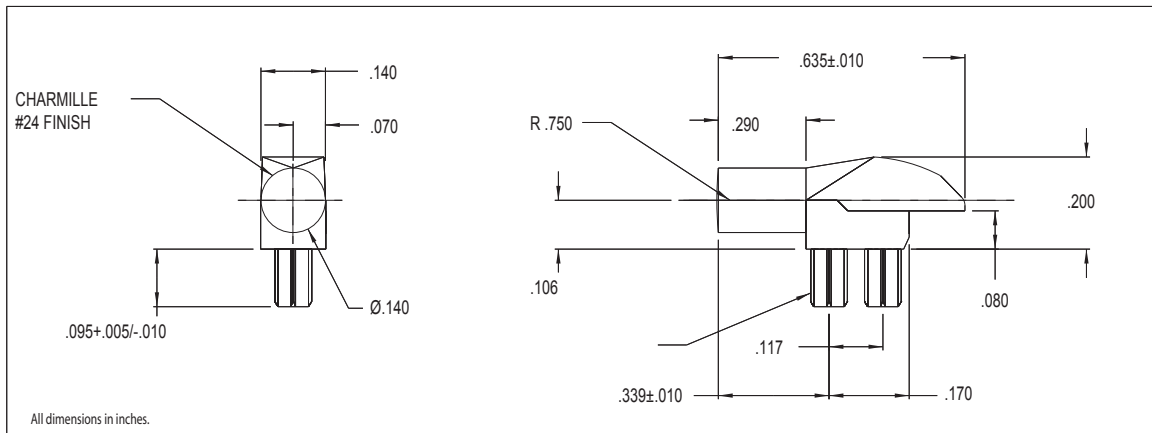


# Chicago Miniature Lighting, LLC

*Lighting the world since 1910*

## 7513D2-L Series Bright★Pipes™ Optical Lightpipes

### DESCRIPTION AND FEATURES



- Precision engineered with **ray tracing** for bright, optically precise even indication and attractive appearance.
- ESD protection from circuitry for exceptional reliability.
- Optimized for use with Bright★Chips™ SMT LEDs.
- High contrast and wide viewing angle for greater visibility.
- Available in a variety of colors for added contrast and aesthetics.
- Parts inserted after reflow to permit LED pad inspection before assembly.
- Compliance to UL94V-0
- Low profile for height constrained applications.
- Large lens provides high visibility.
- 7513D2 is designed for use with 67-21 and 67-22 Series Bright Chip LEDs.

Mounting hole pattern on page 1-X5.

147 Central Avenue  
Hackensack, NJ 07601  
Phone: (201) 489-8989  
Fax: (201) 489-6911

18703 Dix Toledo Road  
Brownstown, MI 48193

Saret Zone Franca, Edificio B  
Alajuela Costa Rica

E-mail: [sales@chml.com](mailto:sales@chml.com) • Web Site: [www.chml.com](http://www.chml.com)

Chicago Miniature Lighting, LLC reserves the right to make specification revisions that enhance the design and/or performance of the product

# Mouser Electronics

Authorized Distributor

Click to View Pricing, Inventory, Delivery & Lifecycle Information:

[Chicago Miniature:](#)

[7513D2-L](#)